

Product datasheet for **RG239472**

RFX3 (NM_001282116) Human Tagged ORF Clone

Product data:

Product Type:	Expression Plasmids
Product Name:	RFX3 (NM_001282116) Human Tagged ORF Clone
Tag:	TurboGFP
Symbol:	RFX3
Mammalian Cell Selection:	Neomycin
Vector:	pCMV6-AC-GFP (PS100010)
E. coli Selection:	Ampicillin (100 ug/mL)



[View online »](#)

ORF Nucleotide Sequence:

>RG239472 representing NM_001282116.
 Blue=ORF Red=Cloning site Green=Tag(s)

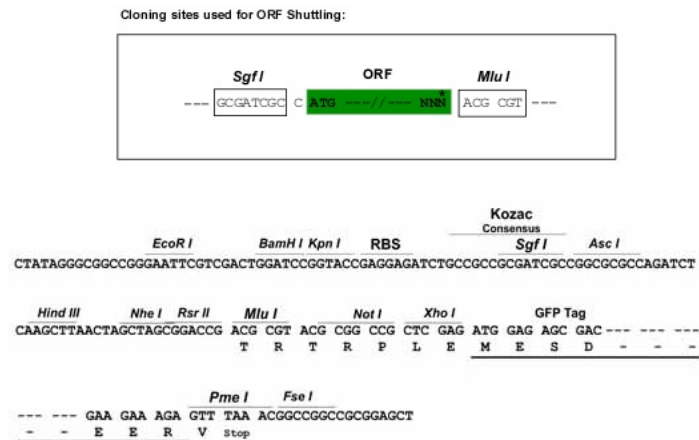
```
GCTCGTTTAGTGAACCGTCAGAATTTTGTAAACGACTCACTATAGGGCGGCCGGGAATTCGTGACTG
GATCCGGTACCGAGGAGATCTGCCGCCACGATCGCC
ATGCAGACATCAGAGACTGGGTCCGACACAGGCTCGACAGTGACCTTACAACATCTGTGGCTAGTCAA
GCAGCAGTGCCTACGCAGGTGGTACAGCAAGTACCAGTACAACAACAGGTACAGCAGGTACAGACTGTG
CAGCAGGTACAACATGTCTATCCCGCTCAGGTGCAGTATGTGGAAGGAAGCGATACTGTCTATACCAAT
GGAGCAATCCGAACAACACGTATCCTTACACAGAGACACAGATGTACAGCCAAAATACTGGAGGAAT
TACTTTGATACTCAAGGGAGTCCGCCAGGTGACTACCGTGGTCTCATCCACAGTATGGTGGGCACT
GGTGGGATTAGATGGGCGTACAGGAGGACAACCTCATCAGCAGCTCTGGAGGAACCTATCTGATCGGC
AACTCAATGGAGAATTCTGGTCACTCAGTGACACACAACCTCGGGCCTCCCCAGCGACAATTGAAATG
GCGATTGAGACGCTGAAAAGTCTGACGGTCTGTCCACTCACAGAAGCTCTTTCTCAACAGCCATCTC
CAGTGGCTGTTGGACAATTATGAGACAGCAGAAGGAGTGAGCCTTCCCAGAAGCACTCTGTACAACCAC
TACCTTCGACACTGTGAGAACACAACCTGGACCCAGTCAATGCTGCCTCTTTGGAAAATTAATAAGA
TCAATTTTATGGGGCTACGAACCAGGAGATTGGGCACTAGAGGAAACTCAAAATACCACTACTATGGG
ATTCGTGTCAAGCCAGATTCCCCTTAAATCGTCTGCAAGAAGACATGCAGTATATGGCTATGAGACAA
CAACCCATGCAACAGAAACAAAGGTACAAGCCTATGCAGAAAGTGGATGGGGTTGCAGATGGTTTACA
GGAAGTGGTCAACAGACAGGCACATCTGTTGAGCAAAGTGAATTTGCCAAAGCCAACATCATCAACAG
TTTTTAGATGCATCTCGAGCACTCCAGAGTTGGAGAAGTTGAAATCTTTCTCTGCCAGATGGTACT
ACCTTTGAGGATATCAAGTCACTGCAGAGTCTTTATAGAGAGCACTGTGAGGCAATTTGGACGTTGTT
GTGAATCTTCAATTTAGCCTGATAGAAAAATTTGGCAAACATTTGGCGCTATTCTCCCTACTCCA
ACTGATGGCACTACCATTACCGAATCGAGCAATCTGAGTGAATAGAAAAGTCGACTTCCGAAAGCAAAG
CTGATAACTCTGTGCAAACATGAGTCTATCCTGAAATGGATGTGTAAGTGTGACCATGGGATGTACCAG
GCTTTGGTGGAGATTCTCATCCCGACGTCCTTAGACCTATTCTAGTGCCTTGACCCAAGCCATTGCA
AATTTTGCAAAAAGCCTTGAAGTTGGCTTTCCAATGCCATGAACAATATTCCACAGAGAATGATACAA
ACCAAGGTTGCCGCTGTAAGTGCCTTTGCCAGACTCTGCGAAGATACACGTCGTTAATCACCTGGCC
CAGGCAGCTCGTGCAGTCTTCCAGAACCTTCCCAAATCAACCAGATGCTTAGTGACCTCAACCGTGTG
GACTTTGCCAATGTCCAGGAGCAGGCTTCTGGGTGTGCCAGTGTGATGACAACATGGTTCAGAGACTA
GAAACAGACTTCAAGATGACTCTTCCAGCAGCAGAGCACCTGGAGCAGTGGGCTGCGTGGCTTGACAAT
GTGATGATGCAAGCACTGAAACCCTATGAAGGAAGACCCAGTTTTCTAAAGCCGCCAGGCAGTTTCTG
CTAAAATGGTCTTTCTACAGCTCAATGGTTATTGGGACTTAACCTTACGCAGTGTCTGCTAGCTTTGGC
TCCTTCCACCTGATCCGCTACTCTACGACGAATATATGTTTTACTTAGTGAACATCGTGTGCTCAG
GCAACAGGAGAGACTCCTATAGCAGTATGGGCGAGTTTGGTGATTTAAATGCCGTGTCTCTGGAAAT
CTGGATAAAGATGAAGGCAGTGAAGTAGAAAAGTGAATGGATGAAGAACTGGATGACTCTTCCAGAGCCT
CAAGCCAAAAGAGAGAAAACAGAGCTGAGCCAGGCATTTCCAGTGGGCTGCATGCAGCCTGTTCTCGAG
ACTGGCGTGAACCAAGCCTCCTGAATCCAATTCACAGCGAGCATTGTACAAGTACTCAGACTATC
AGACAGTGCAGCGCTACAGGAAATACCTACACTGCAGTC
ACGCGTACGCGGCCGCTCGAG - GFP Tag - GTTTAAAC
```

Protein Sequence: >Peptide sequence encoded by RG239472
 Blue=ORF Red=Cloning site Green=Tag(s)

```
MQTSETGSDTGSTVTLQTSVASQAAVPTQVVQVVPVQQVQVVQVTQVQVQHVYPAQVQVVEGSDTVYTN
GAI R T T T Y P Y T E T Q M Y S Q N T G G N Y F D T Q G S S A Q V T T V V S S H S M V G T G G I Q M G V T G G Q L I S S G G T Y L I G
N S M E N S G H S V T H T T R A S P A T I E M A I E T L Q K S D G L S T H R S S L L N S H L Q W L L D N Y E T A E G V S L P R S T L Y N H
Y L R H C Q E H K L D P V N A A S F G K L I R S I F M G L R T R R L G T R G N S K Y H Y Y G I R V K P D S P L N R L Q E D M Q Y M A M R Q
Q P M Q Q K Q R Y K P M Q K V D G V A D G F T G S G Q Q T G T S V E Q T V I A Q S Q H H Q Q F L D A S R A L P E F G E V E I S S L P D G T
T F E D I K S L Q S L Y R E H C E A I L D V V V N L Q F S L I E K L W Q T F W R Y S P S T P T D G T T I T E S S N L S E I E S R L P K A K
L I T L C K H E S I L K W M C N C D H G M Y Q A L V E I L I P D V L R P I P S A L T Q A I R N F A K S L E G W L S N A M N N I P Q R M I Q
T K V A A V S A F A Q T L R R Y T S L N H L A Q A A R A V L Q N T S Q I N Q M L S D L N R V D F A N V Q E Q A S W V C Q D D N M V Q R L
E T D F K M T L Q Q Q S T L E Q W A A W L D N V M M Q A L K P Y E G R P S F P K A A R Q F L L K W S F Y S S M V I R D L T L R S A A S F G
S F H L I R L L Y D E Y M F Y L V E H R V A Q A T G E T P I A V M G E F G D L N A V S P G N L D K D E G S E V E S E M D E E L D D S S E P
Q A K R E K T E L S Q A F P V G C M Q P V L E T G V Q P S L L N P I H S E H I V T S T Q T I R Q C S A T G N T Y T A V
T R T R P L E M E S D E S G L P A M E I E C R I T G T L N G V E F E L V G G G E G T P E Q G R M T N K M K S T K G A L T F S P Y L L S H V
M G Y G F Y H F G T Y P S G Y E N P F L H A I N N G G Y N T R I E K Y E D G G V L H V S F S Y R Y E A G R V I G D F K V M G T G F P E D
S V I F T D K I I R S N A T V E H L H P M G D N L D G S F T R T F S L R D G G Y S S V V D S H M H F K S A I H P S I L Q N G G P M F A
F R R V E E D H S N T E L G I V E Y Q H A F K T P D A D A G E E R V
```

Restriction Sites: SgfI-MluI

Cloning Scheme:



ACCN: NM_001282116

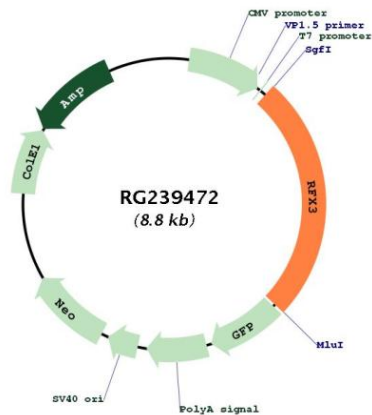
ORF Size: 2247 bp

OTI Disclaimer: The molecular sequence of this clone aligns with the gene accession number as a point of reference only. However, individual transcript sequences of the same gene can differ through naturally occurring variations (e.g. polymorphisms), each with its own valid existence. This clone is substantially in agreement with the reference, but a complete review of all prevailing variants is recommended prior to use. [More info](#)

OTI Annotation: This clone was engineered to express the complete ORF with an expression tag. Expression varies depending on the nature of the gene.

Components:	The ORF clone is ion-exchange column purified and shipped in a 2D barcoded Matrix tube containing 10ug of transfection-ready, dried plasmid DNA (reconstitute with 100 ul of water).
RefSeq:	NM_001282116.2
RefSeq Size:	9271 bp
RefSeq ORF:	2250 bp
Locus ID:	5991
UniProt ID:	P48380
Cytogenetics:	9p24.2
Protein Families:	Transcription Factors
MW:	83.5 kDa
Gene Summary:	This gene is a member of the regulatory factor X gene family, which encodes transcription factors that contain a highly-conserved winged helix DNA binding domain. The protein encoded by this gene is structurally related to regulatory factors X1, X2, X4, and X5. It is a transcriptional activator that can bind DNA as a monomer or as a heterodimer with other RFX family members. Multiple transcript variants encoding different isoforms have been described for this gene. [provided by RefSeq, Aug 2013]

Product images:



Circular map for RG239472