

Product datasheet for **RG239465**

ITGB6 (NM_001282388) Human Tagged ORF Clone

Product data:

Product Type:	Expression Plasmids
Product Name:	ITGB6 (NM_001282388) Human Tagged ORF Clone
Tag:	TurboGFP
Symbol:	ITGB6
Synonyms:	A11H
Mammalian Cell Selection:	Neomycin
Vector:	pCMV6-AC-GFP (PS100010)
E. coli Selection:	Ampicillin (100 ug/mL)



[View online »](#)

ORF Nucleotide
Sequence:

>RG239465 representing NM_001282388.
Blue=ORF Red=Cloning site Green=Tag(s)

```
GCTCGTTTAGTGAACCGTCAGAATTTTGTAAACGACTCACTATAGGGCGGCCGGGAATTCGTGCGACTG
GATCCGGTACCGAGGAGATCTGCCGCCGCGATCGCC
ATGATCACGTACAAGAATTTTACTCATCCATCTGGAGTTGGCGAAAGGTGTGATACCCAGCAAACCTT
TTAGCTAAAGGATGTCAATTAACCTTCATCGAAAACCTGTCTCCAAGTAGAAATACTTAAAAAATAG
CCTCTCAGTGTAGGCAGACAGAAAAATAGTTCTGACATTGTTGAGATTGCGCCTCAAAGCTTGATCCTT
AAGTTGAGACCAGGTGGTGCGCAGACTCTGCAGGTGCATGTCCGCCAGACTGAGGACTACCCGGTGGAT
TTGTATTACCTCATGGACCTCTCCGCTCCATGGATGACGACCTCAACACAATAAAGGAGCTGGGCTCC
CGGCTTCCAAAGAGATGTCTAAATTAACCAGCAACTTTAGACTGGGCTTCGGATCTTTTGTGAAAAAA
CCTGTATCCCCTTTTGTGAAAACAACACCAGAAGAAATGCCAACCTTGCAGTAGTATTCCATACTTC
TGTTTACCTACATTTGGATTCAAGCACATTTTGCATTGACAAATGATGCTGAAAGATTCATGAAATT
GTGAAGAATCAGAAAATTTCTGTAATATTGACACACCCGAAGGTGGATTTGATGCAATTATGCAAGCT
GCTGTGTGTAAGGAAAAATTTGGCTGGCGGAATGACTCCCTCCACCTCCTGGTCTTTGTGAGTGATGCT
GATTCTCATTTTGAATGGACAGCAAACAGCAGGCATCGTCATTCTAATGACGGGCTCTGTCACTTG
GACAGCAAGAATGAATACTCCATGTCAACTGTCTTGAATATCCAACAATTGGACAACCTATTGATAAA
CTGGTACAAAACAACGTGTTATTGATCTTCGCTGTAACCCAAGAACAAGTTCATTTATATGAGAATTAC
GCAAAACTTATTCCTGGAGCTACAGTAGGTCTACTTCAGAAGGACTCCGGAACATTCTCCAGCTGATC
ATCTCAGCTTATGAAGAACTGCGGTCTGAGGTGGAAGTATTAGGAGACTGAAGGACTCAAC
TTGTCAATTTACAGCCATCTGTAACAACGGTACCCTCTTCCAACACCAAAAGAAATGCTCTCATGAAA
GTGGGAGACACAGCTTCCCTCAGCGTACTGTGAATATCCCACTGCGAGAGAAGAAGCAGGCACATT
ATCATAAAGCCTGTGGGCTGGGGATGCCCTGGAATTACTTGTGAGCCAGAATGCAACTGCGACTGT
CAGAAAGAAGTGAAGTGAACAGCTCAAATGTCACCACGGGAACGGCTCTTTCCAGTGTGGGGTGTGT
GCCTGCCACCCTGGCCACATGGGCTCGCTGTGAGTGTGGCGAGGACATGCTGAGCACAGATTCCTGC
AAGGAGGCCCCAGATCATCCCTCTGCAGCGGAAGGGGTGACTGCTACTGTGGCAGTGTATCTGCCAC
TTGTCTCCCTATGGAACATTTATGGGCTTATTGCCAGTGTGACAATTTCTCTGCGTGAGACACAAA
GGGCTGCTCTGCGGAGGTAAACGGCGACTGTGACTGTGGTGAATGTGTGTGCAGGAGCGGCTGGACTGGC
GAGTACTGCAACTGCACCACCAGCACGGACTCCTGCGTCTCTGAAGATGGAGTGTCTGCAGCGGGCGC
GGGACTGTGTTTGTGGCAAGTGTGTTTGCACAAACCCTGGAGCCTCAGGACCAACTGTGAACGATGT
CCTACCTGTGGTACCCCTGTAACCTAAACGGAGCTGCATTGAGTGCCACCTGTGAGCAGCTGGCCAA
GCCCGAGAAGAATGTGTGGACAAGTCAAACAGTGGTGGCACCATCAGTGAAGAAGAAGATTTCTCA
AAGGATGGTTCTGTTTCTGCTCTCTGCAAGGAGAAAAATGAATGTCTTATTACATTCCTAATAACTACA
GATAATGAGGGGAAAACCATCATTACAGCATCAATGAAAAAGATTGTCCGAAGCCTCAAACATTTCCC
ATGATCATGTTAGGGTTTCCCTGGCTATTCTTCTCATCGGGTTGTCTACTGTGCATCTGGAAGCTA
CTGGTGTCAATTCATGATCGTAAAGAAGTTGCCAAATTTGAAGCAGAACGATCAAAGCCAAGTGGCAA
ACGGGAACCAATCCACTTACAGAGGATCCACAAGTACTTTTAAAAATGTAACCTATAAACACAGGGAA
AAACAAAAGGTAGACCTTCCACAGATTGC
ACGCGTACGCGGCCGCTCGAG - GFP Tag - GTTAAAC
```

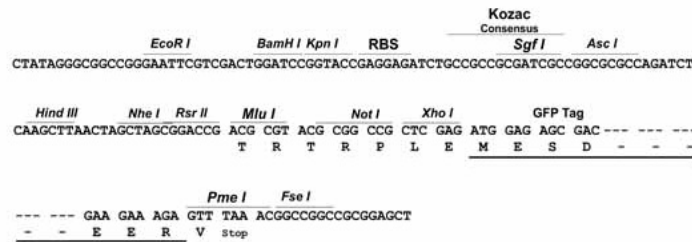
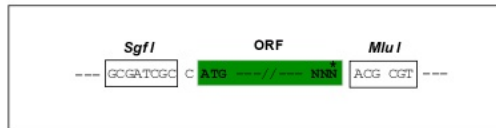
Protein Sequence: >Peptide sequence encoded by RG239465
 Blue=ORF Red=Cloning site Green=Tag(s)

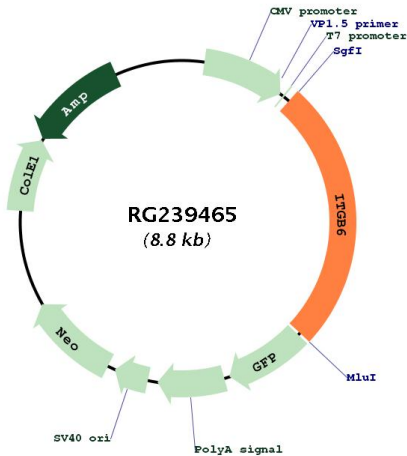
MITYKNFTHPSGVGERCDTPANLLAKGCQLNFIEPVSVQVEILKNKPLSVGRQKNSSDIVQIAPQSLIL
 KLRPGGAQTLQVHVRQTEDYPVDLYLMDLSASMDDLNTIKELGSRLSKEMSKLTSNFRLGFGSFVEK
 PVSPFVKTTPEEIANPCSSIPYFCLPTFGFKHILPLTND AERFNEIVKNQKISANIDTPEGGFDAIMQA
 AVCKEKIGWRNDSLHLLV FVSDADSHFGMDSKLAGIVIPNDGLCHLDSKNEYSMSTVLEYPTIGQLIDK
 LVQNNVLLIFAVTQEQVHLYENYAKLIPGATVGLLQKDSGNILQLIISAYEELRSEVELEVLGDTEGLN
 LSFTAICNNGTLFQHQKCKSHMKVGD TASFSVTVNI PHCERRSRHII IKPVGLGDALELLVSPECNDC
 QKEVEVNSSKCHHGNSFQCGVCACHPGHMGRCECGEDMLSTDSCKEAPDHPSCSGRGDCYCGQCICH
 LSPYGNIYGPYCQDNFSCVRHKGLLCGGNGDCDCGECVCRSGWTGEYCNTTSTDSCVSEGDVLCVGR
 GDCVCGKCVCTNPGASGPTCERCPTCGDPCNSKRSCIECHLSAAGQAREECVDKCKLAGATI SEEDFS
 KDGSVSCSLQGENECLITFLITTDNEGKTIHSINEKDCPKPPNIPMIMLVSLAILLIGVLLLCIWKL
 LVSFHDRKEVAKFEAERSKAKWQTGTNPLYRGSTSTFKNVTYKHREKQKVDLSTDC
TRTRPLEMESDESGLPAMEIECRITGTLNGVEFELVGGGEGTPEQGRMTNKMSTKGALTFSPYLLSHV
MGYGFYHFGTYP SGYENPFLHAINNGGYNTRIEKYEDGGVLHVFSYRYEAGRVIGDFKVMGTGFPE
SVIFTDKIIRS NATVEHLHPMGDNDLDGSFTRTFLRDGGYSSVVD SHMHFKSAIHPSILQNGGPMFA
FRRVEEDHSNTELGIVEYQHAFKTPDADAGEERV

Restriction Sites: SgfI-MluI

Cloning Scheme:

Cloning sites used for ORF Shuttling:



Plasmid Map:


ACCN: NM_001282388

ORF Size: 2238 bp

OTI Disclaimer: The molecular sequence of this clone aligns with the gene accession number as a point of reference only. However, individual transcript sequences of the same gene can differ through naturally occurring variations (e.g. polymorphisms), each with its own valid existence. This clone is substantially in agreement with the reference, but a complete review of all prevailing variants is recommended prior to use. [More info](#)

OTI Annotation: This clone was engineered to express the complete ORF with an expression tag. Expression varies depending on the nature of the gene.

Components: The ORF clone is ion-exchange column purified and shipped in a 2D barcoded Matrix tube containing 10ug of transfection-ready, dried plasmid DNA (reconstitute with 100 ul of water).

RefSeq: [NM_001282388.2](#)

RefSeq Size: 4613 bp

RefSeq ORF: 2241 bp

Locus ID: 3694

UniProt ID: [P18564](#)

Cytogenetics: 2q24.2

Protein Families: Druggable Genome, Transmembrane

Protein Pathways: Arrhythmogenic right ventricular cardiomyopathy (ARVC), Dilated cardiomyopathy, ECM-receptor interaction, Focal adhesion, Hypertrophic cardiomyopathy (HCM), Regulation of actin cytoskeleton

MW: 82 kDa

Gene Summary: This gene encodes a protein that is a member of the integrin superfamily. Members of this family are adhesion receptors that function in signaling from the extracellular matrix to the cell. Integrins are heterodimeric integral membrane proteins composed of an alpha chain and a beta chain. The encoded protein forms a dimer with an alpha v chain and this heterodimer can bind to ligands like fibronectin and transforming growth factor beta 1. Alternate splicing results in multiple transcript variants. [provided by RefSeq, Sep 2013]