

## Product datasheet for **RG239452**

### **DRP1 (DNM1L) (NM\_001278465) Human Tagged ORF Clone**

#### **Product data:**

Product Type:	Expression Plasmids
Product Name:	DRP1 (DNM1L) (NM_001278465) Human Tagged ORF Clone
Tag:	TurboGFP
Symbol:	DNM1L
Synonyms:	DLP1; DRP1; DVLP; DYMPLE; EMPF; EMPF1; HDYNIV; OPA5
Mammalian Cell Selection:	Neomycin
Vector:	pCMV6-AC-GFP (PS100010)
E. coli Selection:	Ampicillin (100 ug/mL)



[View online »](#)

ORF Nucleotide  
Sequence:

>RG239452 representing NM\_001278465.  
Blue=ORF Red=Cloning site Green=Tag(s)

```
GCTCGTTTAGTGAACCGTCAGAATTTTGTAAACGACTCACTATAGGGCGGCCGGGAATTCGTGACTG
GATCCGGTACCGAGGAGATCTGCCGCCACGATCGCC
ATGGAGGCGCTAATTCTGTGCATAAACAAGCTCCAGGACGTCTTCAACACGGTGGGCGCCGACATCATC
CAGCTGCCTCAAATCGTCTAGTGGGAACGCAGAGCAGCGAAAGAGCTCAGTGCTAGAAAGCCTGGTG
GGGAGGGACCTGCTTCCAGAGGTACTGGAATTGTCACCCGGAGACCTCTCATTCTGCAACTGGTCCAT
GTTTCACAAGAAGATAAACGAAAAACAACAGGAGAAGAAAATGACCCTGTACATGGAAAACTCAAGA
CACCTTTCTAAAGGGGTGAAGCAGAAGAATGGGGTAAATTTCTCACACCAAAAAAATAGCTTTACACG
GATTTTGTGAAATTCGACAAGAAATGAAAAAGAAACAGAAAGAATTTCAAGAAATAAAGGGAGTA
AGCCCTGAACCAATTCATCTTAAGATTTTTTACCACGTTGTCAATTTGACACTTGTGGATTTGCCA
GGAATGACCAAGGTGCCTGTAGGTGATCAACCTAAGGATATTGAGCTTCAAATCAGAGAGCTCATTCTT
CGGTTTCATCAGTAATCCTAATTCATTATCCTCGCTGCTACTGCTGCTAATACAGATATGGCAACATCA
GAGGCACCTAAAAATTTCAAGAGAGGTAGATCCAGATGGTGCAGAACCTAGCTGTAATCACTAACTT
GATCTCATGGATGCGGGTACTGATGCCATGGATGTATTGATGGGAAGGGTATTCCAGTCAAACCTGGGA
ATAATTGGAGTAGTTAACAGGAGCCAGCTAGATATTAACAACAAGAAGAGTGAACCTGATTCAATCCGT
GATGAGTATGCTTTTCTTCAAAAGAAATATCCATCTCTGGCCAATAGAAATGGAACAAAGTATCTTGCT
AGGACTCTAAACAGGTTACTGATGCATCACATCAGAGATTGTTTACCAGAGTTGAAAAACAAGATAAAT
GTTCTAGCTGCTCAGTATCAGTCTTCTAAATAGCTACGGTGAACCCGTTGGATGATAAAAGTGCTACT
TACTCCAATTTATTACCAAATTTGCCACAGAATATTGTAACACTATTGAAGGAAGTCAAAATATATT
GAAACTTCGGAGCTATGCGGTGGTGTAGAATTTGTTATATTTTCCATGAGACTTTTGGGCGAACCTTA
GAATCTGTTGATCCACTTGGTGGCTTAACTATTGACATTTTACTGCTGCAATAGAAATGCTACTGGT
CCTCGTCTGCTTTATTTGTGCCTGAGGTTTCTTTGAGTTACTGGTGAAGCGGCAAAATCAAACGCTA
GAAGAGCCAGCCTCCGCTGTGTGGAAGTGGTTCATGAGGAAATGCAAAGGATCATTGAGCACTGTAGC
AATTACAGTACACAGGAATTGTTACGATTTCTAACTTCATGATGCCATAGTTGAAGTGGTACTTGT
CTTCTTCGTAAGGTTGCCTGTTACAAATGAAATGGTCCATAACTTAGTGGCAATTGAACTGGCTTAT
ATCAACACAAAACATCCAGACTTTGCTGATGCTTGTGGGCTAATGAACAATAATAGAGGAACAAAGG
AGAAACAGGCTAGCCAGAGAATTACCTCAGCTGTATCACGAGACAAGTCTTCTAAAGTTCCAAGTCT
TTGGCACCTGCCTCCAGGAGCCCTCCCCGCTGCTTCTGCTGAGGCTGATGGCAAGGTTGCATCTGGA
GGTGGTGGGTTGGAGATGGTGTCAAGAACAACACAGGCAACTGGAGAGGAATGCTGAAAACCTCA
AAAGCTGAAGAGTTATTAGCAGAAGAAAAATCAAACCCATTCCAATTATGCCAGCCAGTCCACAAAAA
GGTCATGCCGTGAACCTGCTAGATGTGCCAGTTCTGTTGCACGAAAACCTATCTGCTCGGGAACAGCGA
GATTGTGAGGTTATTGAACGACTCATTAAATCATATTTTCTCATTGTCAGAAAGAATATTCAAGACAGT
GTGCCAAAGGCAGTAATGCATTTTTTGGTTAATCATGTGAAAGACACTCTTCAAGAGTGAAGTATAGGC
CAGCTGTATAAATCATCCTTATTGGATGATCTTCTGACAGAATCTGAGGACATGGCACAGCGCAGGAAA
GAAGCAGCTGATATGCTAAAGGCATTACAAGGAGCCAGTCAAATATTGCTGAAATCCGGGAGACTCAT
CTTTGG
ACGCGTACGCGGCCGCTCGAG - GFP Tag - GTTAAAC
```

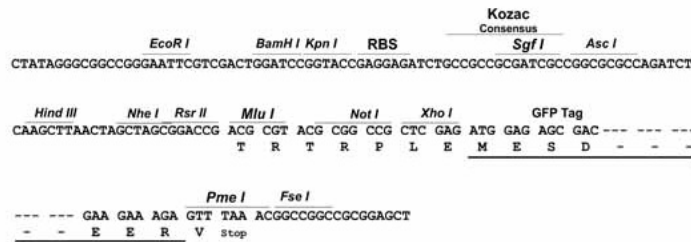
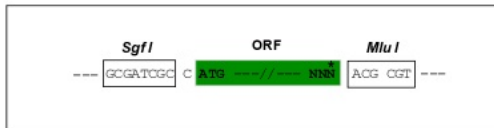
Protein Sequence: >Peptide sequence encoded by RG239452  
 Blue=ORF Red=Cloning site Green=Tag(s)

MEALIPVINKLQDVFNVTGADIIQLPQIVVVGTSQSGKSSVLESVGRDLLPRGTGIVTRRPLILQLVH  
 VSQEDKRKTTGEENDPATWKNRHLKSGVEAEWGFHLTKNKL YDFDEIRQE IENETERISGNNKGV  
 SPEPIHLKIFSPNVVNL TLVDLPGMTKVPVGDQPKDIELQIRELILRFISNPNSIILAVTAANTDMATS  
 EALKISREVPDGRRTLAVITKLDLMDAGTDAMDVLMGRVIPVKLGIIGVVNRSQLDINNKKSVTDSIR  
 DEYAFLLQKKYPSLANRNGTKYLARTLNRLMLHHIRDCLPELKTRINVLAQYQSLLSYGEVDDK SAT  
 LLQLITKFATEYCNTIEGTAKYIETSEL CGGARICYIFHETFGR TLESVDPLGGLNTIDILTAIRNATG  
 PRPALFVPEVSFELLVQRQIKRLEEPSLRVELVHEEMQRIIQHCSNYSTQELLRFPKLHDAIVEVVT  
 LLRKRLPVTNEMVHNLVAIELAYINTKHPDFADACGLMNNNIEEQRRNRLARELPSAVSRDKSSKVP  
 LAPASQEPSAASAEADGKVASGGGVGDVQEP TGNWRGMLKTSKAEELLAEKSKPIPIMPASPQK  
 GHAVNLLDVPVPVARKLSAREQRDCEVIERLIKSYFLIVRKNIQDSVPKAVMHFLVNHVKDTLQSELV  
 QLYKSSLLDDLLTESEDMAQRKKAADMLKALQGASQIIAEIRETHLW  
 TRTRPLEMESDESGLPAMEIECRITGTLNGVEFELVGGGEGTPEQGRMTNKMKSTKGALTFSPYLLSHV  
 MGYGFYHFGTYPSTYENPFLHAINNGGYTNRIEKYEDGGVLHVSFSYRYEAGRVIGDFKVMGTGFPED  
 SVIFTDKIIRSNAIVEHLHPMGDNDLDGSFTRTFSLRDGGYSSVVD SHMHFKSAIHP SILQNGGPMFA  
 FRRVEEDHSNTELGIVEYQHAFKTPDADAGEERV

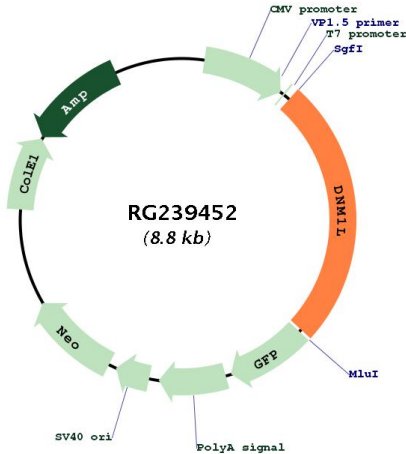
Restriction Sites: SgfI-MluI

Cloning Scheme:

Cloning sites used for ORF Shuttling:



## Plasmid Map:



ACCN: NM\_001278465

ORF Size: 2214 bp

OTI Disclaimer: The molecular sequence of this clone aligns with the gene accession number as a point of reference only. However, individual transcript sequences of the same gene can differ through naturally occurring variations (e.g. polymorphisms), each with its own valid existence. This clone is substantially in agreement with the reference, but a complete review of all prevailing variants is recommended prior to use. [More info](#)

OTI Annotation: This clone was engineered to express the complete ORF with an expression tag. Expression varies depending on the nature of the gene.

Components: The ORF clone is ion-exchange column purified and shipped in a 2D barcoded Matrix tube containing 10ug of transfection-ready, dried plasmid DNA (reconstitute with 100 ul of water).

RefSeq: [NM\\_001278465.1](#), [NP\\_001265394.1](#)

RefSeq Size: 4621 bp

RefSeq ORF: 2217 bp

Locus ID: 10059

UniProt ID: [O00429](#)

Cytogenetics: 12p11.21

Protein Pathways: Endocytosis, Fc gamma R-mediated phagocytosis

MW: 82.5 kDa

**Gene Summary:**

This gene encodes a member of the dynamin superfamily of GTPases. The encoded protein mediates mitochondrial and peroxisomal division, and is involved in developmentally regulated apoptosis and programmed necrosis. Dysfunction of this gene is implicated in several neurological disorders, including Alzheimer's disease. Mutations in this gene are associated with the autosomal dominant disorder, encephalopathy, lethal, due to defective mitochondrial and peroxisomal fission (EMPF). Alternative splicing results in multiple transcript variants encoding different isoforms. [provided by RefSeq, Jun 2013]