

Product datasheet for **RG239451**

ADAM12 (NM_001288974) Human Tagged ORF Clone

Product data:

Product Type:	Expression Plasmids
Product Name:	ADAM12 (NM_001288974) Human Tagged ORF Clone
Tag:	TurboGFP
Symbol:	ADAM12
Synonyms:	ADAM12-OT1; CAR10; MCMP; MCMPMItna; MLTN; MLTNA
Mammalian Cell Selection:	Neomycin
Vector:	pCMV6-AC-GFP (PS100010)
E. coli Selection:	Ampicillin (100 ug/mL)



[View online »](#)

ORF Nucleotide
Sequence:

>RG239451 representing NM_001288974.
Blue=ORF Red=Cloning site Green=Tag(s)

```
GCTCGTTTAGTGAACCGTCAGAATTTTGTAAACGACTCACTATAGGGCGGCCGGGAATTCGTGACTG
GATCCGGTACCGAGGAGATCTGCCGCCACGATCGCC
ATGGCAGCGCGCCCGCTGCCCGTGTCCCCCGCCCGCCCTCCTGCTCGCCCTGGCCGGTGTCTGTCTC
GCGCCCTGCGAGGCCCGAGGGGTGAGCTTATGGAACCAAGGAAGAGCTGATGAAGTTGTAGTGCCTCT
GTTGGGAGTGGGACCTCTGGATCCAGTGAAGAGCTTCGACTCCAAGAATCATCCAGAAGTGTGAAT
ATTCGACTACAACGGAAAGCAAAGAAGTATCATAAACTCGAAAGAAATGAAGGTCTCATTGCCAGC
AGTTTCACGAAACCCACTATCTGCAAGACGGTACTGATGTCTCCCTCGCTCGAAATTACACGGGTAC
TGTTACTACCATGGACATGTACGGGGATATTCTGATTACAGCAGTCACTCAGCACGTGTTCTGGTCTC
AGGGGACTTATTGTGTTGAAAATGAAAGCTATGTCTTAGAACCAATGAAAAGTGAACCAACAGATAC
AAACTCTCCAGCGAAGAAGCTGAAAAGCGTCCGGGGATCATGTGGATCACATCACAACACACCAAAAC
CTCGCTGCAAAGAATGTGTTCCACCACCCTCTCAGACATGGCAAGAAGGCATAAAAGAGAGACCCCTC
AAGGCAACTAAGTATGTGGAGCTGGTGTGCTGGCAGACAACCGAGAGTTTCAGAGGCAAGGAAAAGAT
CTGGAAAAGTTAAGCAGCGATTATAGAGATTGCTAATCACGTTGACAAGTTTTACAGACCACTGAAC
ATTCGGATCGTGTGGTAGGCGTGAAGTGTGGAATGACATGGACAAATGCTCTGTAAGTCAGGACCCA
TTCACCAGCCTCCATGAATTTCTGGACTGGAGGAAGATGAAGCTTCTACCTCGAAATCCCATGACAAT
GCGCAGCTTGTAGTGGGTTTATTTCCAAGGGACCACCATCGGCATGGCCCAATCATGAGCATGTGC
ACGGCAGACCAGTCTGGGGAAATGTGATGGACCATTAGACAATCCCCTTGGTGCAGCCGTGACCCCTG
GCATGAGCTGGGCCACAATTCGGGATGAATCATGACACACTGGACAGGGGCTGTAGCTGTCAAATG
GCGGTTGAGAAAGGAGGCTGCATCATGAACGCTTCCACCGGTACCCATTTCCATGGTGTTCAGCAGT
TGCAGCAGGAAGGACTTGGAGACCAGCCTGGAGAAAGGAATGGGGGTGTGCCTGTTAACCTGCCGGAA
GTCAGGGAGTCTTTCGGGGGCCAGAAGTGTGGAAACAGATTTGTGGAAGAAGGAGAGGAGTGTGACTGT
GGGGAGCCAGAGGAATGTATGAATCGCTGCTGCAATGCCACCACCTGTACCCTGAAGCCGGACGCTGTG
TGCGCACATGGGCTGTGCTGTGAAGACTGCCAGCTGAAGCCTGCAGGAACAGCGTGCAGGGACTCCAGC
AACTCCTGTGACCTCCAGAGTTCTGCACAGGGGCCAGCCCTCACTGCCAGCCAACGTGTACCTGCAC
GATGGGCACTCATGTGAGGATGTGGACGGCTACTGCTACAATGGCATCTGCCAGACTCACGAGCAGCAG
TGTGTACGCTCTGGGGACCAGGTGCTAAACCTGCCCTGGGATCTGCTTTGAGAGAGTCAATTCTGCA
GGTGATCCTTATGGCAACTGTGGCAAAGTCTCGAAGAGTTCCTTTGCCAAATGCGAGATGAGAGATGCT
AAATGTGGAAAAATCCAGTGTCAAGGAGGTGCCAGCCGGCCAGTATTGGTACCAATGCCGTTTCCATA
GAAACAAACATCCCCCTGCAGCAAGGAGCCGGATTCTGTGCCGGGGGACCCACGTGTACTTGGGGCAT
GACATGCCGGACCCAGGGCTTGTGCTTGCAGGCACAAAGTGTGCAGATGGAAAAATCTGCCTGAATCGT
CAATGTCAAAATATTAGTGTCTTTGGGTTTACAGAGTGTGCAATGCAGTGCACGGCAGAGGGGTGTGC
AACAAACAGGAAGAAGTGCCTGCGAGGGCCACTGGGCACCTCCCTTCTGTGACAAGTTTGGCTTTGGA
GGAAGCACAGACAGCGGCCCATCCGGCAAGCAGGAAAGCAAGGCAGGAAGCTGCAGAGTCCAAC
AGGGAGCGCGCCAGGGCCAGGACCCCTGGGATCGCAGGAGCATGCGTCTACTGCCTCACTGACACTC
ATC
ACGCGTACGCGGCCGCTCGAG - GFP Tag - GTTAAAC
```

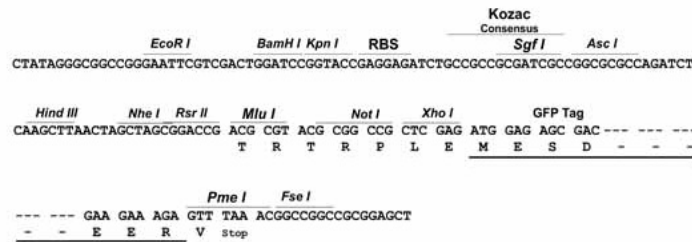
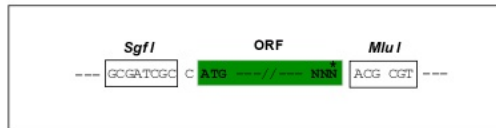
Protein Sequence: >Peptide sequence encoded by RG239451
 Blue=ORF Red=Cloning site Green=Tag(s)

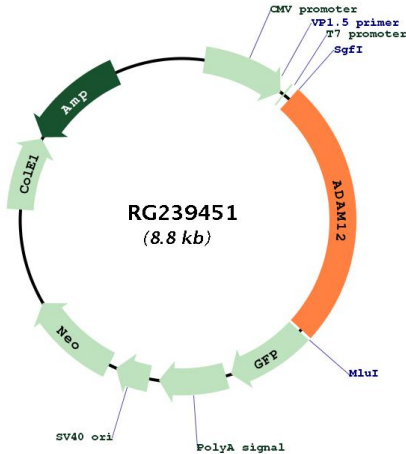
MAARPLVSPARALLLAGALLAPCEARGVSLWNQGRADEVVSASVSGDLWIPVKSFDSKNHPEVLN
 IRLQRESKELIINLERNEGLIASSFTETHYLQDGTDVSLARNYTGHCYYHGHVGRGSDSAVSLSTCSGL
 RGLIVFENESYVLEPMKATNRYKLFPAKKLKSVRGSCGSHHNTPNLAAKNVFPSPQTWARRHKRETL
 KATKYVELVIVADNREFQRQGDLEKVKQRLIEIANHVDFYRPLNIRIVLVGVVEVWMDKCSVSQDP
 FTSLHEFLDWRMKLLPRKSHDNAQLVSGVYFQGTITIGMAPIMSMCTADQSGGI VMDHSDNPLGAAVTL
 AHELGHNFGMNHDTLDRGCSCQMAVEKGGCIMNASTGYPFPMVFSSCSRKDLETSLEKGMVCLFNLPE
 VRESFGGQKCGNRFVEEGEECDGEEPEECMNRCCNATTCTLKPDAVCAHGLCCEDCQLKPAGTACRDSS
 NSCDLPEFCTGASPHCPANVYLHDGHSCQDVGVCYNGICQTHEQQCVTLWGPAGKAPAGICFERVNSA
 GDPYGNCGKVKSSFAKCEMRDAKCGKIQCQGGASRPVIGTNAVSIETNIPLQQGGRILCRGTHVYLG
 DMPDPGLVLAGTKCADGKICLNRQCQNI SVFGVHECAMQCHGRVCNNRNKNCHEAHWAPPFCDFGFG
 GSTDSGPIRQAGKEARQAAESNRERGGQEPVGSQEHASTLTI
TRTRPLEMESDESLPAMEIECRITGTLNGVEFELVGGGEGTPEQGRMTNKMKSTKGALTFSPYLLSHV
MGYGFYHFGTYPSTYENPFLHAINNGGYNTRIEKYEDGGVLHVSFSYRYEAGRVIGDFKVMGTGFPE
SVIFTDKIIRSNAIVEHLHPMGDNDLGSFTRTFLRDGGYSSVVD SHMHFKSAIHPSILQNGGPMFA
FRRVEEDHSNTELGIVEYQHAFKTPDADAGEERV

Restriction Sites: SgfI-MluI

Cloning Scheme:

Cloning sites used for ORF Shuttling:



Plasmid Map:


ACCN: NM_001288974

ORF Size: 2211 bp

OTI Disclaimer: The molecular sequence of this clone aligns with the gene accession number as a point of reference only. However, individual transcript sequences of the same gene can differ through naturally occurring variations (e.g. polymorphisms), each with its own valid existence. This clone is substantially in agreement with the reference, but a complete review of all prevailing variants is recommended prior to use. [More info](#)

OTI Annotation: This clone was engineered to express the complete ORF with an expression tag. Expression varies depending on the nature of the gene.

Components: The ORF clone is ion-exchange column purified and shipped in a 2D barcoded Matrix tube containing 10ug of transfection-ready, dried plasmid DNA (reconstitute with 100 ul of water).

RefSeq: [NM_001288974.2](#)

RefSeq Size: 3417 bp

RefSeq ORF: 2214 bp

Locus ID: 8038

UniProt ID: [O43184](#)

Cytogenetics: 10q26.2

Protein Families: Druggable Genome, Protease, Secreted Protein, Transmembrane

MW: 80.7 kDa

Gene Summary:

This gene encodes a member of a family of proteins that are structurally related to snake venom disintegrins and have been implicated in a variety of biological processes involving cell-cell and cell-matrix interactions, including fertilization, muscle development, and neurogenesis. Expression of this gene has been used as a maternal serum marker for pre-natal development. Alternative splicing results in multiple transcript variants encoding different isoforms. Shorter isoforms are secreted, while longer isoforms are membrane-bound form. [provided by RefSeq, Jan 2014]