

## Product datasheet for **RG239447**

### **ABCB8 (NM\_001282291) Human Tagged ORF Clone**

#### **Product data:**

Product Type:	Expression Plasmids
Product Name:	ABCB8 (NM_001282291) Human Tagged ORF Clone
Tag:	TurboGFP
Symbol:	ABCB8
Synonyms:	EST328128; M-ABC1; MABC1; MITOSUR
Mammalian Cell Selection:	Neomycin
Vector:	pCMV6-AC-GFP (PS100010)
E. coli Selection:	Ampicillin (100 ug/mL)



[View online »](#)

**ORF Nucleotide Sequence:**

>RG239447 representing NM\_001282291.  
 Blue=ORF Red=Cloning site Green=Tag(s)

```

GCTCGTTTAGTGAACCGTCAGAATTTTGTAAACGACTCACTATAGGGCGGCCGGGAATTCGTGACTG
GATCCGGTACCGAGGAGATCTGCCGCCACGATCGCC
ATGCTGGTGCATTTATTCGGGTCCGGATTCCGGGTGGCCATTCCAGGCAGGCTGCTACGCCCCCTC
CGCTTCCAGACATTCTCAGCTGTACAGAAACACATGGCGTAATGGGAAAAGTGGACAGTTACACAAGGCA
GAAGGAGAGTACTCTGATGGCTACCGCAGCTCCTCCCTCCTCCGGGCCGTGGCCACCTGCGGTCCAG
CTCTGGGCCACCTCCCTCGAGCCCCCTAGTCCCAGATGGAGCCCCTCTGCCTGGTGTGGGTTGGG
GGAGCCCTGCTAGGCCCATGGTACTGAGTAAGCATCCCCACCTCTGCCTTGTGGCCCTGTGTGAGGCA
GAAGAGGCCCTCCTGCCAGCTCCACACCCATGTCGTGGGTCTCGCTTAACTGGAAGCTCTTCTGG
CAGTTTCTGCACCCACCTGCTGGTCTGGGGTAGCCGTCTGCTGGCCTTGGGTGCGGCACTCGTG
AATGTACAGATCCCCCTGCTCCTGGCCAGCTGGTAGAGTCTGGCCAAGTACACAAGGGACCACGTA
GGGAGTTTTCATGACTGAGTCCCAGAATCTCAGCACCCACCTGCTTATCCTCTATGGTGTCCAGGGACTG
CTGACCTTCGGGTACCTGGTGTCTGTCCACGTTGGCGAGCGCATGGCTGTGGACATGCGGAGGGCC
CTTTCAGCTCCCTGCTCCGACAAGACATCACCTTCTTTGACCCAATAAGACAGGGCAGCTGGTGAGC
CGCTTGACAACACTGACGTGACGGAGTTTAAAGTCATCCTTCAAGCTTGTATCTCCCAGGGGCTGCGAAGC
TGACCCAGGTGGCAGGCTGCCTGGTGTCCCTGTCCATGCTGTGACACGCCCTCACGCTGCTGCTGATG
GTGGCCACACCAGCCCTGATGGGAGTGGGCACCCTGATGGGCTCAGGCCCTCCGAAAATTGTCTCGCCAG
TGTGAGGAGCAGATCGCCAGGGCAATGGGCGTAGCAGACGAGGCCCTGGGCAATGTGCGGACTGTGCGT
GCCTTCGCCATGGAGCAACGGGAAGAGGAGCGCTATGGGCAGAGCTGGAAGCCTGCCGCTGCCGGGCA
GAGGAGCTGGGCCGCGGCATCGCCTTGTCCAAGGGCTTCCAACATCGCCTTCAACTGCATGGTCTTG
GGTACCCTATTTATTGGGGCTCCCTTGTGGCCGACAGCAGCTGACAGGGGGAGACCTCATGCTCTTC
CTGGTGGCCTCCAGACAGTGAAGGTCCATGGCCAACCTCTCTGTCTGTTTGGGCAGGTGGTCCGG
GGGCTGAGTGCAGGTGCCGGGTCTTTGAGTACATGGCCCTGAACCCCTGCATCCCACTGCTGGGGGC
TGCTGCGTCCCCAAAGAGCAGCTGCGTGGCTCCGTTACATTTCAGAACGCTGCTTCAGCTACCCCTGC
CGCCCCGGCTTCGAGGTGCTGAAAGACTTACCCTGACGCTGCCCCCTGGCAAGATCGTGGCCCTCGTG
GGCCAGCTGGCGGAGGAAAGACCACCGTGGCTTCCCTGCTGGAGCGTTCTACGACCCACGGCAGGC
GTGGTGTGCTGGATGGGCGGGACCTGCGCACCCCTTACCCTCCTGGCTCCGGGGCCAGGTTGTCCGC
TTCATCAGCCAGGAGCCCGTCTGTTTGGGACGACCATCATGAAAACATCCGCTTGGGAAGCTGGAA
GCTTCCGATGAAGAGGTGTACACAGCCGCCGGGAAGCGAATGCTCAGGATTCATCACCAGCTTCCCC
GAGGGCTACAACACGGTGTGTCGGTGAACGGGGCACTACCCTGTCTGGGGCCAGAAGCAGCGCCTGGCC
ATCGCCCCGAGCCCTTATCAAGCAGCCACGGTGTGATACTGGATGAAGCTACCAGCGCGCTGGATGCA
GAGTCCGAGCGGTTGTACAGGAGGCCCTGGACGGGGCAGTGCAGGCCGACCGGTGCTGGTAATTGCC
CACCGGCTCAGCACTGTCCGTGGGGCCACTGCATTGTGCTCATGGCCGATGGCCGTGTCTGGGAGGCT
GGGACACATGAAGAGCTCCTGAAGAAAGGGGGCTATACGCCGAGCTCATCCGGAGGCAGGCCCTGGAT
GCCCGAGGACAGCGGCCACCAGCCAAAAAGCCAGAAGGCCCCAGGAGCCACCAGCACAAAGTCC
ACGCGTACGCGGCCGCTCGAG - GFP Tag - GTTTAAAC
  
```

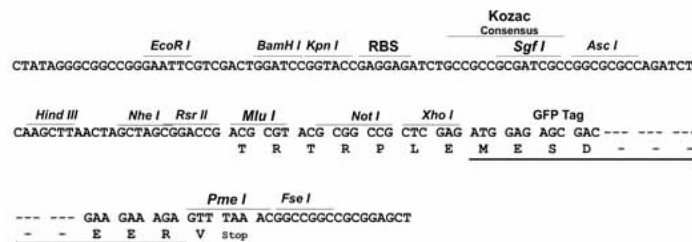
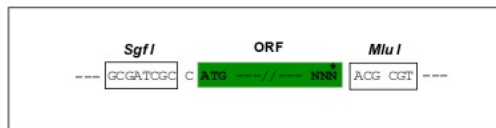
**Protein Sequence:** >Peptide sequence encoded by RG239447  
 Blue=ORF Red=Cloning site Green=Tag(s)

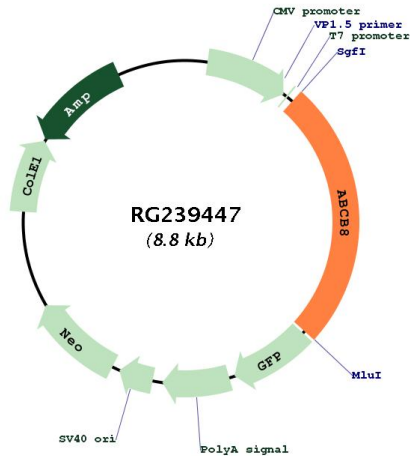
MLVHLFRVGI RGGPFPGRLLPPLRFQTFSAVRNTWRNGKTGQLHKAEGEYSDGYRSSLLRAVAHLRSQ  
 LWAHLPRAPLAPRWSPSAWCWVGALLGPMVL SKHPHLCLVALCEAEEAPPASSTPHVVGSRFNWKLFW  
 QFLHPHLLVLGVAVVLLALGAALVNVQIPLLLGQLVEVVAKYTRDHVGSFMTE SQNLSTHLLILYGVQGL  
 LTFGYLVLLSHVGERMAVDMRRALFSSLLRQDITFFDANKTGQLVSRLT TDVQEFKSSFKLVISQGLRS  
 CTQVAGCLVLSMLSTRLLTLLMVATPALMGVGLMGSGLRKL SRQCQEIQIARAMGVADEALGNVRTVR  
 AFAMEQREEERYGAELEACRCRAEELGRGIALFQGLSNI AFNCMVLGTLFIGGSLVAGQQLTGDDLMSF  
 LVASQTVQRSMANLSVLFQGVVRGLSAGARVFEYMALNPCIPLSGGCCVPKEQLRGSVTFQNVCFSYPC  
 RPGFEVLKDFTLTLP PGKIVALVQSGGKTTVASLLERFYDPTAGVVMLDGRDLRDLPSWLRGQVVG  
 FISQEPVLFGTTIMENIRFGKLEASDEEVYTAAREANAHEFITSFPEGYNTVVGERTT LSGGQKQRLA  
 IARALIKQPTVLILDEATSALDAESERVVQEALDRASAGRTVLVIAHRLSTVRGAHCIVVMADGRVWEA  
 GTHEELKKGGLYAELIRRQALDAPRTAAPPPKPEGPRSHQHS  
**TRTRPLEMESDESGLPAMEIECRITGTLNGVEFELVGGGEGTPEQGRMTNKMKSTKGALTFSPYLLSHV**  
 MGYGFIYHFGTYP SGYENPFLHAINNGGYTNRIEKYEDGGVLHVFSYRYEAGRVIGDFKVMGTGFPEP  
 SVIFTDKIIRS NATVEHLHPMGDNDLDGSFTRTFLRDGGYSSVVD SHMHFKSAIHPSILQNGGPMFA  
 FRRVEEDHSNTELGIVEYQHAFKTPDADAGEERV

**Restriction Sites:** SgfI-MluI

**Cloning Scheme:**

Cloning sites used for ORF Shuttling:



**Plasmid Map:**


<b>ACCN:</b>	NM_001282291
<b>ORF Size:</b>	2205 bp
<b>OTI Disclaimer:</b>	The molecular sequence of this clone aligns with the gene accession number as a point of reference only. However, individual transcript sequences of the same gene can differ through naturally occurring variations (e.g. polymorphisms), each with its own valid existence. This clone is substantially in agreement with the reference, but a complete review of all prevailing variants is recommended prior to use. <a href="#">More info</a>
<b>OTI Annotation:</b>	This clone was engineered to express the complete ORF with an expression tag. Expression varies depending on the nature of the gene.
<b>Components:</b>	The ORF clone is ion-exchange column purified and shipped in a 2D barcoded Matrix tube containing 10ug of transfection-ready, dried plasmid DNA (reconstitute with 100 ul of water).
<b>RefSeq:</b>	<a href="#">NM_001282291.2</a>
<b>RefSeq Size:</b>	4735 bp
<b>RefSeq ORF:</b>	2208 bp
<b>Locus ID:</b>	11194
<b>UniProt ID:</b>	<a href="#">Q9NUT2</a>
<b>Cytogenetics:</b>	7q36.1
<b>Protein Families:</b>	Druggable Genome, Transmembrane
<b>Protein Pathways:</b>	ABC transporters
<b>MW:</b>	80.4 kDa

**Gene Summary:**

This nuclear gene encodes a multi-pass membrane protein that is targeted to the mitochondrial inner membrane. The encoded protein is an ATP-dependent transporter that may mediate the passage of organic and inorganic molecules out of the mitochondria. Loss of function of the related gene in mouse results in a disruption of iron homeostasis between the mitochondria and cytosol. Alternative splicing results in multiple transcript variants. [provided by RefSeq, Aug 2013]