

Product datasheet for **RG239445**

Fibroblast activation protein, alpha (FAP) (NM_001291807) Human Tagged ORF Clone

Product data:

Product Type:	Expression Plasmids
Product Name:	Fibroblast activation protein, alpha (FAP) (NM_001291807) Human Tagged ORF Clone
Tag:	TurboGFP
Symbol:	Fibroblast activation protein, alpha
Synonyms:	DPPIV; FAPA; FAPalpha; SIMP
Mammalian Cell Selection:	Neomycin
Vector:	pCMV6-AC-GFP (PS100010)
E. coli Selection:	Ampicillin (100 ug/mL)



[View online »](#)

ORF Nucleotide Sequence:

>RG239445 representing NM_001291807.
 Blue=ORF Red=Cloning site Green=Tag(s)

```

GCTCGTTTAGTGAACCGTCAGAATTTTGTAAACGACTCACTATAGGGCGGCCGGGAATTCGTGCGACTG
GATCCGGTACCGAGGAGATCTGCCGCCGCGATCGCC
ATGAAGACTTGGGTAAAAATCGTATTTGGAGTTGCCACCTCTGCTGTGCTTGCCTTATTGGTGATGTGC
ATTGCTTACGCCCTTCAAGAGTTCATAACTCTGAAGAAAAACAATGAGAGCACTCACACTGAAGGAT
ATTTTAAATGGAACATTTTCTTATAAAACATTTTTTCCAACTGGATTTAGGACAAGAATATCTTCAT
CAATCTGCAGATAACAATATAGTACTTTATAATATTGAAACAGGACAATCATATACCATTTTGAGTAAT
AGAACCATGCTTTGGAGATACTTTACACAGCAACATATTACATCTATGACCTTAGCAATGGAGAATTT
GTAAGAGGAAATGAGCTTCTCGTCCAATTCAGTATTTATGCTGGTCGCCTGTTGGGAGTAAATTAGCA
TATGTCTATCAAAAACAATATCTATTTGAAACAAAGACCAGGAGATCCACCTTTTCAAATAACATTTAAT
GGAAGAGAAAAATAAATATTTAATGGAATCCCAGACTGGGTTTATGAAGAGGAAATGCTTGCTACAAAA
TATGCTCTCTGGTGGTCTCCTAATGAAAAATTTTGGCATATGCGGAATTTAATGATACGGATATACCA
GTTATTGCCTATTCTATTATGGCGATGAACAATATCCTAGAACAATAAATATCCATACCCAAAGGCT
GGAGCTAAGAATCCCCTGTTCCGATATTTATTATCGATACCACTTACCCTGCGTATGTAGTCCCCAG
GAAGTGCCTGTTCCAGCAATGATAGCCTCAAGTGATTATTATTTCAAGTTGGCTCAGTGGGTTACTGAT
GAACGAGTATGTTTGCAGTGGCTAAAAAGAGTCCAGAATGTTTCCGGTCTGTCTATATGTGACTTCAGG
GAAGACTGGCAGACATGGGATTGTCAAAGACCCAGGAGCATATAGAAGAAAGCAGAAGCTGGATGGGCT
GGTGGATTCTTTGTTTCAACACCAGTTTTCACTATGATGCCATTTTCTACTACAAAATATTTAGTGAC
AAGGATGGCTACAAACATATTTCACTATATCAAAGACACTGTGGAAAATGCTATTTCAAATTACAAGTGGC
AAGTGGGAGGCCATAAATATATTCAGAGTAACACAGGATTCAGTGTTTTATTCTAGCAATGAATTTGAA
GAATACCCTGGAAGAAGAAACATCTACAGAATTAGCATTGGAAGCTATCCTCCAAGCAAGAAGTGTTT
ACTTGCCATCTAAGGAAAGAAAGGTGCCAATATTACACAGCAAGTTTCAGCGACTACGCCAAGTACTAT
GCACTTGTCTGCTACGGCCAGGCATCCCCATTTCCACCCTTCATGATGGACGCACTGATCAAGAAATT
AAAATCCTGGAAGAAAACAAGGAATTGGAAAATGCTTTGAAAAATATCCAGCTGCCTAAAGAGGAAATT
AAGAACTTGAAGTAGATGAAATTACTTTATGGTACAAGATGATTCTTCTCCTCAATTTGACAGATCA
AAGAAATCCCTTGCTAATTAAGTGTATGGTGGTCCCTGCAGTCAGAGTGAAGGTCTGTATTTGCT
GTTAATTGGATATCTTATCTTGAAGTAAGGAAGGGATGGTCATTGCCTTGGTGGATGGTCGAGGAACA
GCTTTCCAAGGTGACAACTCCTCTATGCAGTGTATCGAAAGCTGGGTGTTTATGAAGTTGAAGACCAG
ATTACAGCTGTGAGAAAATTCATAGAAATGGGTTTCATTGATGAAAAAAGAATAGCCATATGGGGCTGG
TCCTATGGAGGATACGTTTCATCACTGGCCCTTGATCTGGAAGTGGTCTTTTCAAATGTGGTATAGCA
GTGGCTCCAGTCTCCAGCTGGGAATATTACGCGTCTGTCTACACAGAGAGATTATGGGTCTCCCAACA
AAGGATGATAATCTTGAGCACTATAAGAATTCAACTGTGATGGCAAGAGCAGAATATTTAGAAAATGTA
GACTATCTTCTCATCCACGGAACAGCAGATGATAATGTGCACTTTCAAACCTCAGCACAGATTGCTAAA
GCTCTGGTTAATGCACAAGTGGATTTCCAGGCAATGTGGTACTCTGACCAGAACCACGGCTTATCCGGC
CTGTCCACGAACCACTTATACCCACATGACCCACTTCTAAAGCAGTGTTCCTTTTGTCCAGAC
AGCGGACCGACGCGTACGCGGCCGCTCGAG - GFP Tag - GTTAAAC
  
```

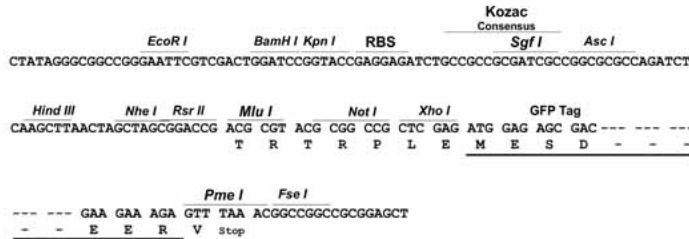
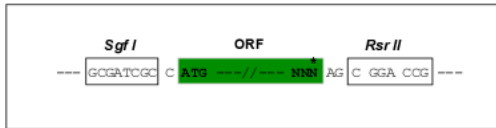
Protein Sequence: >Peptide sequence encoded by RG239445
 Blue=ORF Red=Cloning site Green=Tag(s)

MKTWVKIVFGVATSAVLALLVMCIVLRPSRVHNSSEENTMRALTLKDILNGTFSYKTFPPNWI SGQEYLH
 QSADNNIVLNYIETGQSYTILSNRTMLWRYSYATYYIYDLSNGEFVVRGNELPRPIQYLCWSPVGSKLA
 YVYQNNIYLKQRPDPPFQITFNGRENKIFNGIPDWVYEEEMLATKYALWSPNGKFLAYAEFNDTDIP
 VIAYSYYGDEQYPRITINIPYKAGAKNPVVRIFIIDTTYPAYVGPQEVVPAMIASSDYF SWL TWVTD
 ERVCLQWLKRVQNVSVLSICDFREDWQWDCPKTQEHIEESRTGWAGGFVSTPVFSYDAISYYKIFSD
 KDGYKHIHYIKDVENAIQITSGKWEAINIFRVTDQSLFYSSNEFEEYPGRRNIYRISIGSYPPSKKV
 TCHLRKERCQYYTASFSDYAKYYALVCYGPPISTLHDGRDQEIKILEENKELENALKNIQLPKEEI
 KKLEVDEITLWYKMLPPQFDRSKYPLLIQVYGGPCSQSVRSVFAVNWISYLASKEGMVIALVDGRGT
 AFQGDKLLYAVYRKLGVYEVEDQITAVRKFIEMGFIDEKRIAIWGSYGGYVSSLALASGTGLFKCGIA
 VAPVSSWEYYASVYTERFMGLPTKDDNLEHYKNSTVMARAEYFRNVLYLLIHGTADDNVHFQNSAQIAK
 ALVNAQVDFQAMWYSDQNHGLSGLSTNHLYTHMTHFLKQCFSLSD
 SGPTRTRPLEMESDESGLPAMEIECRITGTLNGVEFELVGGGEGTPEQGRMTNKMKSTKGALTFSPYLL
 SHVMGYGFYHFGTYPSTYENPFLHAINNGGYTNTRIEKYEDGGVLLHVSFSYRYEAGRVI GDFKVMGTGF
 PEDSVIFTDKIIRS NATVEHLHPMGDNDLDGSFTRTFLRDGGYSSVVD SHMHFKSAIHPSILQNGGP
 MFAFRRVEEDHSNTELGIVEYQHAFKTPDADAGEERV

Restriction Sites: SgfI-RsrII

Cloning Scheme:

Cloning sites used for ORF Shuttling:

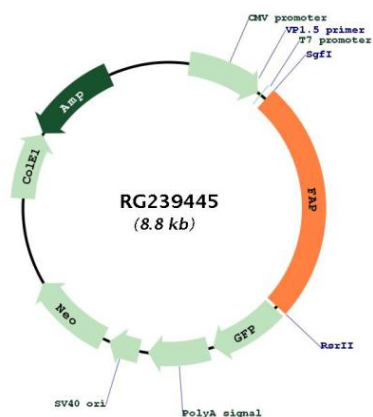


ACCN: NM_001291807

ORF Size: 2205 bp

OTI Disclaimer:	Due to the inherent nature of this plasmid, standard methods to replicate additional amounts of DNA in E. coli are highly likely to result in mutations and/or rearrangements. Therefore, OriGene does not guarantee the capability to replicate this plasmid DNA. Additional amounts of DNA can be purchased from OriGene with batch-specific, full-sequence verification at a reduced cost. Please contact our customer care team at custsupport@origene.com or by calling 301.340.3188 option 3 for pricing and delivery.
	The molecular sequence of this clone aligns with the gene accession number as a point of reference only. However, individual transcript sequences of the same gene can differ through naturally occurring variations (e.g. polymorphisms), each with its own valid existence. This clone is substantially in agreement with the reference, but a complete review of all prevailing variants is recommended prior to use. More info
OTI Annotation:	This clone was engineered to express the complete ORF with an expression tag. Expression varies depending on the nature of the gene.
Components:	The ORF clone is ion-exchange column purified and shipped in a 2D barcoded Matrix tube containing 10ug of transfection-ready, dried plasmid DNA (reconstitute with 100 ul of water).
RefSeq:	NM_001291807.3
RefSeq Size:	2740 bp
RefSeq ORF:	2208 bp
Locus ID:	2191
UniProt ID:	Q12884
Cytogenetics:	2q24.2
Protein Families:	Druggable Genome, Protease, Transmembrane
MW:	84.9 kDa
Gene Summary:	The protein encoded by this gene is a homodimeric integral membrane gelatinase belonging to the serine protease family. It is selectively expressed in reactive stromal fibroblasts of epithelial cancers, granulation tissue of healing wounds, and malignant cells of bone and soft tissue sarcomas. This protein is thought to be involved in the control of fibroblast growth or epithelial-mesenchymal interactions during development, tissue repair, and epithelial carcinogenesis. Alternatively spliced transcript variants encoding different isoforms have been found for this gene. [provided by RefSeq, Apr 2014]

Product images:



Circular map for RG239445