

## Product datasheet for **RG239444**

### ADCY7 (NM\_001286057) Human Tagged ORF Clone

#### Product data:

Product Type:	Expression Plasmids
Product Name:	ADCY7 (NM_001286057) Human Tagged ORF Clone
Tag:	TurboGFP
Symbol:	ADCY7
Synonyms:	AC7
Mammalian Cell Selection:	Neomycin
Vector:	pCMV6-AC-GFP (PS100010)
E. coli Selection:	Ampicillin (100 ug/mL)



[View online »](#)

**ORF Nucleotide Sequence:**

>RG239444 representing NM\_001286057.  
 Blue=ORF Red=Cloning site Green=Tag(s)

```
GCTCGTTTAGTGAACCGTCAGAATTTTGTAAACGACTCACTATAGGGCGGCCGGGAATTCGTGCGACTG
GATCCGGTACCGAGGAGATCTGCCGCCACGATCGCC
ATGCCAGCCAAGGGGCGCTACTTCTCAACGAGGGGCGAGGAGGGCCCTGACCAAGATGCGCTCTACGAG
AAGTACCAGCTCACCAGCCAGCATGGGCGCTGCTGCTCAGCTCCTGCTGGTGGCCGCGACTGCCTGC
GTGGCCCTCATCATCATTGCCCTTCCAGCCAGGGGACCCCTCCAGACACCAGGCCATTCTGGGCATGGCG
TTCTGCTGCTGGCGGTGTTTGGCGCCCTCTGTGCTGATGTACGTGAGTGTCTCCTGCGGCGCTGG
CTCAGGGCCTTGGCGCTGCTCACCTGGGCTGCTTGGTGGCGCTGGGCTATGTGCTGGTGTTCGACGCA
TGGACAAAGGGCGCTGTGCGTGGGAGCAGGTGCCCTTCTTCTGTTTATTGTCTTCGTGGTGTACACA
CTACTGCCCTTCCAGCATGCGGGGCGCTGTCCGCTTGGGGCCGCTCCACTGCCTCCACCTCCTGGTG
CTCGGTTCTTTGATGGGAGGCTTACGACACCCAGTGTCCGGTGGGGCTGCAGTGTGGCCAACGCA
GTCATCTTCTGTGTGGAACTGACAGGCGCCTCCACAAGCACAAATGCAGGATGCGTCCCGGGAC
CTTTACCTACACTGTGAAGTGCATCCAGATCCGCCGAAGCTGCGCATCGAGAAGCGCCAGCAGGAG
AACCTGCTGCTGTCAGTGTCTCCGGCCACATCTCCATGGGCATGAAGCTGGCCATCATCGAACGGCTC
AAGGAGCATGGTGACCGTCGCTGCATGCCTGACAACAACCTCCACAGCCTCTACGTCAAGAGGCACCAG
AATGTCAGCATCCTCTATGCGGACATCGTGGGCTTACGCAGCTGGCCAGCGACTGTTCTCCCAAGGAG
CTGGTGGTGGTGTGAATGAGCTCTTTGGCAAGTTCGACCAGATCGCCAAGGCCAACGAGTGCATGCGA
ATCAAGATCCTCGGCGACTGCTACTACTGTGTATCGGGCTGCCCGTGTGCTGCCTACCCACGCCCCG
AACTGCGTGAAGATGGGGCTGGACATGTGCCAGCCATCAAGCAGGTGCGGGAGGCCACGGGCGTGGAC
ATCAACATGCGTGTGGGCATACACTCGGGGAATGTGCTGTGCGGGGTATCGGGCTGCGCAAGTGGCAG
TATGACGTGTGGTCCCACGACGTGTCCCTGGCCAACCGATGGAGGCAGCCGGAGTACCCGGCCGGGTG
CACATCACGGAGGCCACGCTAAAGCACCTGGACAAGGCGTACGAGGTGGAGGATGGGCACGGGCAGCAG
CGGGACCCCTACCTCAAGGAGATGAACATCCGCACCTACCTGGTGCATCGACCCCGGAGCCAGCAGCCA
CCCCGCCAGCCAACACCTCCCGAGGCCAAGGGGGACGCGGCCCTGAAGATGCGGGCGTCACTGCGC
ATGACCCGGTACCTCGAGTCTGGGGGGCGGCACGGCCCTTTCACATCTCAACCACCGTGAAGCGTG
AGCAGTGGTGAAGCCACGTCCCAACGGGCGGAGGCCTAAGAGCGTTCCCGAGCGCCACCGCCGGACC
CCAGACAGAAGCATGTCCCAAGGGGCGGTGGAGGATGACTCGTACGATGACGAGATGCTGTACGCC
ATTGAGGGGCTCAGCTCCAGAGGCCCTGCTGCTCCAAGTCCGATGACTTCTACACCTTTGGGTCCATC
TTCTGGAGAAGGGCTTTGAGCGCGAGTACCGCTGGCACCCATCCCCGGGCCCGCCACGACTTTGCC
TGCGCCAGCCTGATCTTGTCTGCATCCTGCTCGTCCATGCTCCTGCTCATGCCAGGACGGCGGCGACTG
GGTGTGCTCCTTCGGGCTGGTGGCCTGTGTACTGGGGCTGGTGTGGGCTGTGCTTTGCCACCAAGTTC
TCGAGGTGCTGCCAGCTCGGGGACGCTCTGCACTATCTCTGAGAGGGTGGAGACACAGCCCTGCTG
AGGCTGACCTGGCCGCTCCTGACCATCGGCAGCCTGCTCACTGTGGCCATCATCAACCTGCCCTGATG
CCTTTCCAAGTTCAGAGCTGCCTGTTGGCAATGAGACAGGCCTACTGGCCGCGAGCAGCAAGACAAGA
GCCCTGTGTGAGCCCTCCCGCACCTGCATACTGTTTTTCCCGTTAAATGAGCTCACTTCA
ACGCGTACGCGGCCGCTCGAG - GFP Tag - GTTTAAAC
```

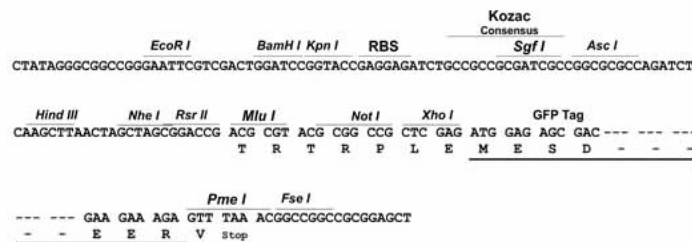
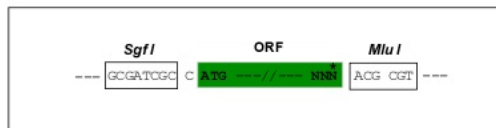
**Protein Sequence:** >Peptide sequence encoded by RG239444  
 Blue=ORF Red=Cloning site Green=Tag(s)

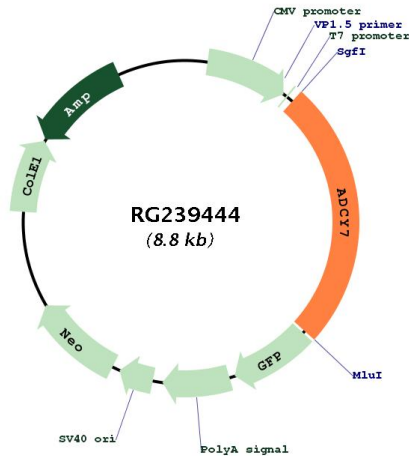
MPAKGRYFLNEGEEGPDQDALYEKYLTSQHGPLLLTLLVAATACVALIIIFASQGDPSRHQAILGMA  
 FLVLAVFAALSVLMYVECLRRWLRALALLTWACLVALGYLVFDAWTKAACAWEQVFFLFIIVVYV  
 LLPFSMRGAVAVGAVSTASHLLVLGSLMGFTTPSVRVGLQLLANAVIFLCGNLTGAFHKHQMDASRD  
 LFTYTVKCIQIRRKLRIEKRQENLLSVLPAHISMGMKLAIIERLKEHGDRRCMPDNFHSLYVVRHQ  
 NVSILYADIVGFTQLASDCSPKELVVVLNELFGKFDQIAKANEKMRKILGDCYCYVSGLPVSLPTHAR  
 NCVKMGLDMCQAIKQVREATGVDINMRVGIHSGNVLCGVIGLRKWQYDVVSHDVSANRMEAAGVGRV  
 HITEATLKHLDKAYEVEDGHGQQRDPYLKEMNIRTYLVIDPRSQQPPPSQHLPRPKGDAALKMRASVR  
 MTRYLESWGAARPFHLNHRESVSSGETHVPNGRRPKSVPQRHRRTPDRSMSPKGRSEDDSYDDEMLSA  
 IEGLSSTRPCCSKSDDFYTFGSIFLEKGFEREYRLAPIPRARHDFACASLIFVCILLVHLLMPRTAAL  
 GVSFGLVACVLGLVLGLCFATKFSRCCPARGTLCTISERVETQPLLRLTLAVLTIGSLLTVAIINPLM  
 PFQVPELPGVNETGLLAASSKTRALCEPLPHLHTVFSRLNELTS  
**TRTRPLEMESDESGLPAMEIECRITGTLNGVEFELVGGGEGTPEQGRMTNKMKSTKGALTFSPYLLSHV**  
 MGYGFYHFGTYPSTYENPFLHAINNGGYNTRIEKYEDGGVLHVSFSYRYEAGRVIGDFKVMGTGFPEP  
 SVIFTDKIIRSNAIVEHLHPMGDNDLGSFTRTFLRDGGYSSVVDSHMHFKSAIHPSILQNGGPMFA  
 FRRVEEDHSNTELGIVEYQHAFKTPDADAGEERV

**Restriction Sites:** SgfI-MluI

**Cloning Scheme:**

Cloning sites used for ORF Shuttling:



**Plasmid Map:**


<b>ACCN:</b>	NM_001286057
<b>ORF Size:</b>	2202 bp
<b>OTI Disclaimer:</b>	The molecular sequence of this clone aligns with the gene accession number as a point of reference only. However, individual transcript sequences of the same gene can differ through naturally occurring variations (e.g. polymorphisms), each with its own valid existence. This clone is substantially in agreement with the reference, but a complete review of all prevailing variants is recommended prior to use. <a href="#">More info</a>
<b>OTI Annotation:</b>	This clone was engineered to express the complete ORF with an expression tag. Expression varies depending on the nature of the gene.
<b>Components:</b>	The ORF clone is ion-exchange column purified and shipped in a 2D barcoded Matrix tube containing 10ug of transfection-ready, dried plasmid DNA (reconstitute with 100 ul of water).
<b>RefSeq:</b>	<a href="#">NM_001286057.1</a> , <a href="#">NP_001272986.1</a>
<b>RefSeq Size:</b>	2582 bp
<b>RefSeq ORF:</b>	2205 bp
<b>Locus ID:</b>	113
<b>Cytogenetics:</b>	16q12.1
<b>Protein Families:</b>	Druggable Genome, Transmembrane
<b>Protein Pathways:</b>	Calcium signaling pathway, Chemokine signaling pathway, Dilated cardiomyopathy, Gap junction, GnRH signaling pathway, Melanogenesis, Oocyte meiosis, Progesterone-mediated oocyte maturation, Purine metabolism, Vascular smooth muscle contraction
<b>MW:</b>	81.9 kDa

**Gene Summary:**

This gene encodes a membrane-bound adenylate cyclase that catalyses the formation of cyclic AMP from ATP and is inhibitable by calcium. The product of this gene is a member of the adenylyl cyclase class-4/guanylyl cyclase enzyme family that is characterized by the presence of twelve membrane-spanning domains in its sequences. Several transcript variants have been observed for this gene, but the full-length natures of only two have been determined so far. [provided by RefSeq, Oct 2013]