

Product datasheet for **RG239442**

FGFR4 (NM_001291980) Human Tagged ORF Clone

Product data:

| | |
|---------------------------|---|
| Product Type: | Expression Plasmids |
| Product Name: | FGFR4 (NM_001291980) Human Tagged ORF Clone |
| Tag: | TurboGFP |
| Symbol: | FGFR4 |
| Synonyms: | CD334; JTK2; TKF |
| Mammalian Cell Selection: | Neomycin |
| Vector: | pCMV6-AC-GFP (PS100010) |
| E. coli Selection: | Ampicillin (100 ug/mL) |



[View online »](#)

ORF Nucleotide Sequence:

>RG239442 representing NM_001291980.
 Blue=ORF Red=Cloning site Green=Tag(s)

```

GCTCGTTTAGTGAACCGTCAGAATTTTGTAAACGACTCACTATAGGGCGGCCGGGAATTCGTGCGACTG
GATCCGGTACCGAGGAGATCTGCCGCCCGGATCGCC
ATGCGGCTGCTGCTGGCCCTGTTGGGGTCTCTGCTGAGTGTCCCTGGGCCTCCAGTCTTGTCCCTGGAG
GCCTCTGAGGAAGTGGAGCTTGAGCCCTGCCTGGCTCCCAGCCTGGAGCAGCAAGAGCAGGAGCTGACA
GTAGCCCTTGGGCAGCCTGTGCGTCTGTGCTGTGGGCGGGCTGAGCGTGGTGCCACTGGTACAAGGAG
GGCAGTCGCTGGCACCTGCTGGCCGTGTACGGGGCTGGAGGGGCCCTAGAGATTGCCAGCTTCTTA
CCTGAGGATGCTGGCCGTACTCTGCCTGGCACGAGGCTCCATGATCGTCTGCAGAATCTCACCTTG
ATTACAGGTGACTCCTTGACCTCCAGCAACGATGATGAGGACCCCAAGTCCCATAGGGACCCCTCGAAT
AGGCACAGTTACCCCAAGCAAGCACCCCTACTGGACACACCCCAAGCGCATGGAGAAGAACTGCATGCA
GTACCTGCGGGGAACACCGTCAAGTTCGCTGTCCAGCTGCAGGCAACCCACGCCACCATCCGCTGG
CTTAAGGATGGACAGGCCTTTCATGGGGAGAACCGCATTGGAGGCATTGGCTGCGCCATCAGCACTGG
AGTCTCGTGATGGAGAGCGTGGTCCCTCGGACCGCGGCACATACACCTGCCTGGTAGAGAACGCTGTG
GGCAGCATCCGCTATAACTACCTGCTAGATGTGCTGGAGCGGTCCCCGCACCGGCCCATCTGCAGGCC
GGGCTCCCGGCCAACACCACAGCCGTGGTGGGACGACGCTGGAGCTGCTGTGCAAGGTGTACAGCGAT
GCCCAGCCCCACATCCAGTGGCTGAAGCACATCGTCATCAACGGCAGCAGCTTCGGAGCCGACGGTTTC
CCCTATGTGCAAGTCTAAAGACTGCAGACATCAATAGCTCAGAGGTGGAGGTCTGTACCTGCGGAAC
GTGTCAGCCGAGGACGCGAGGCGAGTACACCTGCCTCGCAGGCAATTCCATCGGCCCTCTCTACCAGTCT
GCCTGGCTCACGGTGTGCCAGAGGAGGCCACATGGACCGCAGCAGCGCCCGAGGCCAGTCTCCC
TGGAGTCAGGCTCTTCCGGCAAGTCAAGCTCATCCCTGGTACGAGGCGTGCCTCTCTCTCCAGCGGCC
CCGCCCTTGTGCTCGCCGGCCTCGCTGGTGTGGTGGAAAGCCCTAGGCGAGGGCTGCTTTGGCCAGTAGTA
CGTGCAGAGGCCCTTGGCATGGACCCTGCCCGCCTGACCAAGCCAGCACTGTGGCCGTCAAGATGCTC
AAAGACAACGCTCTGACAAGGACCTGGCCGACCTGGTCTCGGAGATGGAGGTGATGAAGCTGATCGGC
CGACACAAGAACATCATCAACCTGCTTGGTGTCTGCACCCAGGAAGGGCCCTGTACGTGATCGTGGAG
TGCGCCGCAAGGGAAACCTGCGGGAGTTCCTGCGGGCCCGGCGCCCCCAGGCCCGACCTCAGCCCC
GACGGTCTCGGAGCAGTGAGGGCCGCTCTCTTCCCAGTCTGGTCTCTGCGCCTACCAGGTGGCC
CGAGGCATGCAGTATCTGGAGTCCCGAAGTGTATCCACCGGACCTGGTGCCCGCAATGTGCTGGTG
ACTGAGGACAATGTGATGAAGATTGCTGACTTTGGGCTGGCCCGGCGTCCACCACATTGACTACTAT
AAGAAAACCAGCAACGGCCGCTGCCTGTGAAGTGGATGGCGCCGAGGCCTTGTGACCGGGTGTAC
ACACACCAGAGTGACGTGTGGTCTTTGGGATCCTGCTATGGGAGATCTTACCCTCGGGGGCTCCCCG
TATCCTGGCATCCCGGTGGAGGAGCTGTTCTCGCTGCTGCGGGAGGGACATCGGATGGACCACCCCA
CACTGCCCCCAGAGCTGTACGGGTGATGCGTGAGTGTGGCACGCAGCGCCCTCCCAGAGGCCTACC
TTCAAGCAGCTGGTGGAGGCGCTGGACAAGTCTGCTGGCCGTCTGTAGGAGTACCTCGACCTCCGC
CTGACCTTCGGACCCTATTCCCCTCTGGTGGGACGCCAGCAGCACCTGCTCTCCAGCGATTCTGTC
TTCAGCCACGACCCCTGCCATTGGGATCCAGTCTCTCCCCTTCGGGTCTGGGGTGCAGACA
ACGGTACGCGGCCGCTCGAG – GFP Tag – GTTTAAAC
  
```

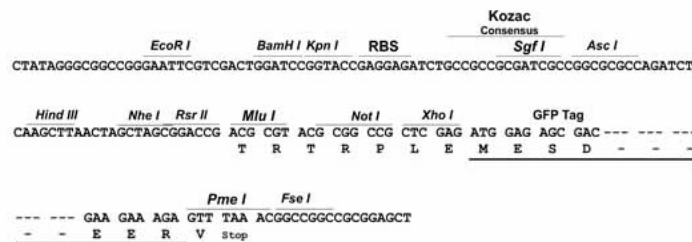
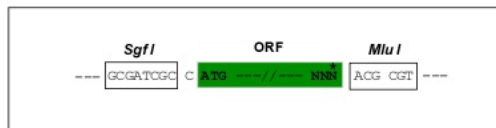
Protein Sequence: >Peptide sequence encoded by RG239442
 Blue=ORF Red=Cloning site Green=Tag(s)

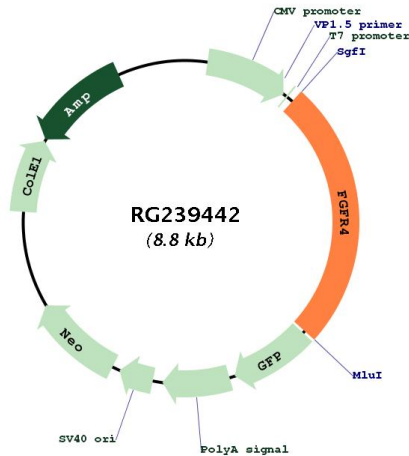
MRLLLALLGVLLSVPGPPVLSEASEEVELEPCLAPSLEQQEQELTVALGQPVRLCCGRAERGGHWYKE
 GSRLAPAGRVGRWRGLEIASFLPEDAGRYLCLARGSMIVLQNLTLITGDSL TSSNDDDPKSHRDPSN
 RHSYPQQAPYWTHPQRMEKKLHAVPAGNTVKFRCPAAGNPTPTIRWLKDGQAFHGENRIGGIRLRHQHW
 SLVMESVVPDRGTYYTCLVENAVGSIRYNYLLDVLERSPHRPILQAGLPANTTAVVGSDEVLLCKVYSD
 AQPHIQWLKHIVINGSSFGADGFPYVQLKTADINSSEVEVLYLRNVAEDAGEYTCLAGNSIGLSYQS
 AWLTVLPEEDPTWATAAPEASSPWSQALPASQAHWPWEACVSPPAAPPCSPASLVLGKPLGEGCFQVQV
 RAEAFGMDPARPDQASTVAVKMLKDNASDKDLADLVSEMEVMKLIGRHKNIINLLGVCTQEGPLYVIVE
 CAAKGNLREFLRARRPPGPDLSPDGPRSEGPLSFPVLVSCAYQVARGMQYLESRKCIHRDLAARNVLV
 TEDNVMKIADFLARGVHHIDYKKTNGRLPVKWMPEALFDRVYTHQSDVWSFGILLWEIFTLGGSP
 YPGIPVEELFSLREGHRMDRPPHCPPELYGLMRECVHAAPSQRPTFKQLVEALDKVLLAVSEEYLDLR
 LTFGPYSPGGDASSTCSSSDSVFSDHPLPLGSSSFPFGSGVQT
TRTRPLEMESDESGLPAMEIECRITGTLNGVEFELVGGGEGTPEQGRMTNKMKSTKGALTFSPYLLSHV
MGYGFYHFGTYPSTYENPFLHAINNGGYNTRIEKYEDGGVLHVSFSYRYEAGRVIGDFKVMGTGFPED
SVIFTDKIIRSNAIVEHLHPMGDNDLDGSFTRTFLRDGGYSSVVDSHMHFKSAIHPSILQNGGPMFA
FRRVEEDHSNTELGIVEYQHAFKTPDADAGEERV

Restriction Sites: SgfI-MluI

Cloning Scheme:

Cloning sites used for ORF Shuttling:



Plasmid Map:


| | |
|--------------------------|--|
| ACCN: | NM_001291980 |
| ORF Size: | 2202 bp |
| OTI Disclaimer: | The molecular sequence of this clone aligns with the gene accession number as a point of reference only. However, individual transcript sequences of the same gene can differ through naturally occurring variations (e.g. polymorphisms), each with its own valid existence. This clone is substantially in agreement with the reference, but a complete review of all prevailing variants is recommended prior to use. More info |
| OTI Annotation: | This clone was engineered to express the complete ORF with an expression tag. Expression varies depending on the nature of the gene. |
| Components: | The ORF clone is ion-exchange column purified and shipped in a 2D barcoded Matrix tube containing 10ug of transfection-ready, dried plasmid DNA (reconstitute with 100 ul of water). |
| RefSeq: | NM_001291980.2 |
| RefSeq Size: | 2911 bp |
| RefSeq ORF: | 2205 bp |
| Locus ID: | 2264 |
| UniProt ID: | P22455 |
| Cytogenetics: | 5q35.2 |
| Protein Families: | Druggable Genome, Protein Kinase |
| Protein Pathways: | Endocytosis, MAPK signaling pathway, Regulation of actin cytoskeleton |
| MW: | 80.9 kDa |

Gene Summary:

The protein encoded by this gene is a tyrosine kinase and cell surface receptor for fibroblast growth factors. The encoded protein is involved in the regulation of several pathways, including cell proliferation, cell differentiation, cell migration, lipid metabolism, bile acid biosynthesis, vitamin D metabolism, glucose uptake, and phosphate homeostasis. This protein consists of an extracellular region, composed of three immunoglobulin-like domains, a single hydrophobic membrane-spanning segment, and a cytoplasmic tyrosine kinase domain. The extracellular portion interacts with fibroblast growth factors, setting in motion a cascade of downstream signals, ultimately influencing mitogenesis and differentiation. [provided by RefSeq, Aug 2017]