

Product datasheet for **RG239428**

Eph receptor B6 (EPHB6) (NM_001280794) Human Tagged ORF Clone

Product data:

Product Type:	Expression Plasmids
Product Name:	Eph receptor B6 (EPHB6) (NM_001280794) Human Tagged ORF Clone
Tag:	TurboGFP
Symbol:	EPHB6
Synonyms:	HEP
Mammalian Cell Selection:	Neomycin
Vector:	pCMV6-AC-GFP (PS100010)
E. coli Selection:	Ampicillin (100 ug/mL)



[View online »](#)

ORF Nucleotide
Sequence:

>RG239428 representing NM_001280794.
Blue=ORF Red=Cloning site Green=Tag(s)

```
GCTCGTTTAGTGAACCGTCAGAATTTTGTAAACGACTCACTATAGGGCGGCCGGGAATTCGTGACTG
GATCCGGTACCGAGGAGATCTGCCGCCGCGATCGCC
ATGGTAGCTGTCGGGGGCTGCCGCTGCCAGCTGGATACCAACCAGCAGCAGGAGACAAGGCCTGCCAA
GCCTGCCACGGGGCTCTATAAGCTTCTGCTGGGAATGCTCCCTGCTCACCATGCCCTGCCCGCAGT
CAGCTCCCAACCCAGCAGCCCCGTTTGGCCCTGCCTGGAGGGCTTCTACCGGGCCAGTCCGACCCA
CCAGAGGCCCCCTGCACTGGTCTCCATCGGCTCCCCAGGAGCTTTGGTTTGAGGTGCAAGGCTCAGCA
CTCATGTACTACTGGCGCTGCCTCGGGAGCTGGGGGTCGAGGGGACCTGCTCTCAATGTCGTGTGC
AAGGAGTGTGAAGCCGCCAGGAACCTGCCAGCGGTGGTGGGGCACTTGTACCCTGCAGGGATGAG
GTCCACTTCGACCCTCGCCAGAGAGGCTGACTGAGAGCCGAGTGTAGTGGGGGACTCCGGGCACAC
GTACCCTACATCTTAGAGGTGCAGGCTGTTAATGGGGTGTCTGAGCTCAGCCCTGACCCTCCTCAGGCT
GCAGCCATCAATGTCAGCACCAGCCATGAAGTGCCTCTGCTGTCCCTGGTGCACCAGGTGAGCCGG
GCATCCAACAGCATCACGGTGTCTGGCCGAGCCGACCAGACCAATGGGAACATCCTGGACTATCAG
CTCCGCTACTATGACCAGGCAGAAGACGAATCCCCTCCTTACCCTGACCAGCAGACCAACACTGCC
ACCGTGACACAGCTGAGCCCTGGCCACATCTATGGTTTCCAGGTGCGGGCCCGGACTGCTGCCGGCCAC
GGCCCTACGGGGGCAAAGTCTATTTCCAGACACTTCTCAAGGGGAGCTGTCTTCCAGCTTCCAGAA
AGACTCTCCTTGGTGATCGGCTCCATCCTGGGGCTTTGGCCTTCTCCTGCTGGCAGCCATCACCGTG
CTGGCGGTGCTTCCAGCGGAAGCGGGCTGGGACTGGCTACACAGAGCAGCTGCAGCAATACAGCAGC
CCAGGACTCGGGTGAAGTATTACATCGACCCCTCCACCTACGAGGACCCCTGTGAGCCATCCGAGAA
CTTGCCCGGAAGTCGATCCTGCTTATATCAAGATTGAGGAGTCAATGGGACAGGCTCTTTGGAGAA
GTGCGCCAGGGCCGCTGCAGCCACGGGGACGGAGGGAGCAGACTGTGGCCATCCAGCCCTGTGGCC
GGGGGCGCCGAAAGCCTGCAGATGACCTTCTGGGCCGGCCGAGTGCTGGGTCAAGTCCAGCACCCC
AACATCCTGCGGCTGGAGGGCTGGTACCAAGAGCCGACCCCTCATGGTGTGACGGAGTTCATGGAG
CTTGGCCCTTGACAGCTTCTCAGGCAGCGGGAGGGCCAGTTCAGCAGCCTGCAGCTGGTGGCCATG
CAGCGGGGAGTGGCTGCTGCCATGCAGTACCTGTCCAGCTTTGCCTTCGTCCATCGCTCGCTGTCTGCC
CACAGCGTGTGGTGAATAGCCACTTGGTGTGCAAGGTGGCCCGTCTTGGCCACAGTCTCAGGGCCCA
AGTTGTTTGGTACTCATGTGGGAAGTATGAGTTATGGAGAACGGCCTTACTGGGACATGAGTGAG
CAGGAGTACTAAATGCAATAGAGCAGGAGTCCGGCTGCCCGCCCTCCAGGCTGTCTCCTGGATTA
CATCTACTTATGTTGGACTTGGCAGAAGGACCGTGCCCGCGGCCCTCATTTTGACCAGCTGGTGGCT
GCATTTGACAAGATGATCCGCAAGCCAGATACCCTGCAGGCTGGCGGGGACCCAGGGGAAAGCCTTCC
CAGGCCCTTGTGACCCCTGTGGCCCTGGACTTTCCTTGTCTGGACTCACCCAGGCTGGCTTTCAGCC
ATTGGACTGGAGTGTACCAGGACAACCTTCCAAAGTTTGGCCTCTGTACCTTCACTGATGTGGCTCAG
CTCAGCCTAGAAGACCTGCCTGCCCTGGGCATCACCTGGCTGGCCACCAGAAGAAGCTGCTGCACCAC
ATCCAGCTCCTCAGCAACACCTGAGGCAGCAGGGCTCAGTGGAGGTC
ACGCGTACGCGGCCGCTCGAG - GFP Tag - GTTTAAAC
```

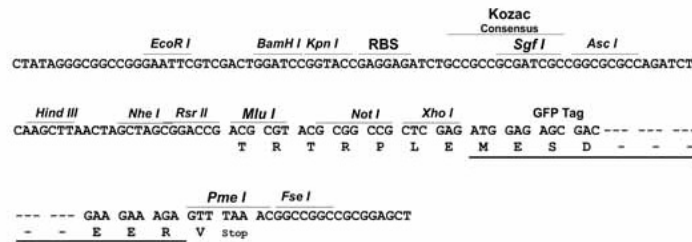
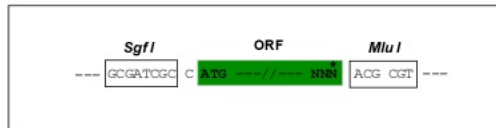
Protein Sequence: >Peptide sequence encoded by RG239428
 Blue=ORF Red=Cloning site Green=Tag(s)

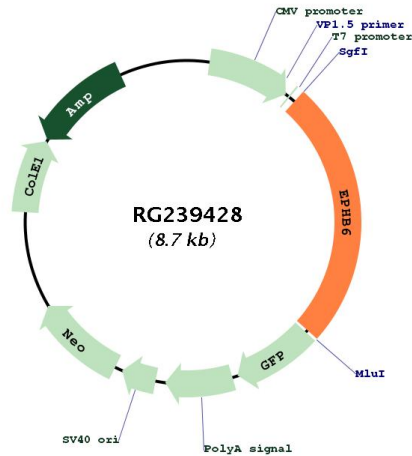
MVAVGGCRCQPGYQPARGDKACQACPRGLYKASAGNAPCSPCPARSHAPNPAAPVPCLEGFYRASSDP
 PEAPCTGPPSAPQELWFEVQGSALMLHWRLPRELGGRGDLLFNVVCKECEGRQEPASGGGGTCHRCRDE
 VHFDPQRGLTESRVLVGGLRAHVPIILEVQAVNGVSELSPDPPQAAAINVSTSHEVPSAVPVVHQVSR
 ASNSITVSWPQPDQTNGNILDYQLRYYDQAEDESHSFTLTSETNTATVTQLSPGHIYGFQVRARTAAGH
 GPYGGKYYFQTL PQGELSSQLPERLSLVTGSILGALAFLLAAITVLAVVFQRKRRGTGYTEQLQQYSS
 PGLGVKYYIDPSTYEDPCQAIRELAREVDPAYIKIEEVIGTGSFGEVRQGR LQPRGRREQTVAIQALWA
 GGAESLQMTFLGRAAVLQGFQHPNILRLEGVVKSRPLMVLTEFMELGPLDSFLRQREGQFSSLQLVAM
 QRGVAAAMQYLSFAFVHRSLSAHSV L VNSHLVCKVARLGHSPQGPSCLLRWAPEVIAHGKHTTSSDV
 WSGFGLMWEVMSYGERPYWDMSEQEV LNAIEQEFRLPPP GCPPGLHLLMLDTWQKDRARRPHFDQLVA
 AFDKMIKRPDTLQAGGDPGERPSQALLTPVALDFPCLDSPQAWLSAIGLECYQDNFSKFG LCTFSDVAQ
 LSLEDLPALGITLAGHQKLLHHIQLLQOHLRQQGSVEV
 TRTRPLEMESDESGLPAMEIECRITGTLNGVEFELVGGGEGTPEQGRMTNKMSTKGALTFSPYLLSHV
 MGYGFYHFGTYP SGYENPFLHAINNGGYTNRIEKYEDGGVLHVFSYRYEAGRVIGDFKVMGTGFPEP
 SVIFTDKIIRSNATVEHLHPMGDNDLDGSFTRTFLSRDGGYSSVVD SHMHFKSAIHPSILQNGGPMFA
 FRRVEEDHSNTELGIVEYQHAFKTPDADAGEERV

Restriction Sites: SgfI-MluI

Cloning Scheme:

Cloning sites used for ORF Shuttling:



Plasmid Map:


ACCN: NM_001280794

ORF Size: 2187 bp

OTI Disclaimer: The molecular sequence of this clone aligns with the gene accession number as a point of reference only. However, individual transcript sequences of the same gene can differ through naturally occurring variations (e.g. polymorphisms), each with its own valid existence. This clone is substantially in agreement with the reference, but a complete review of all prevailing variants is recommended prior to use. [More info](#)

OTI Annotation: This clone was engineered to express the complete ORF with an expression tag. Expression varies depending on the nature of the gene.

Components: The ORF clone is ion-exchange column purified and shipped in a 2D barcoded Matrix tube containing 10ug of transfection-ready, dried plasmid DNA (reconstitute with 100 ul of water).

RefSeq: [NM_001280794.2](#), [NP_001267723.2](#)

RefSeq Size: 4008 bp

RefSeq ORF: 2190 bp

Locus ID: 2051

Cytogenetics: 7q34

Protein Families: Druggable Genome, Protein Kinase, Transmembrane

Protein Pathways: Axon guidance

MW: 80.2 kDa

Gene Summary:

This gene encodes a member of a family of transmembrane proteins that function as receptors for ephrin-B family proteins. Unlike other members of this family, the encoded protein does not contain a functional kinase domain. Activity of this protein can influence cell adhesion and migration. Expression of this gene is downregulated during tumor progression, suggesting that the protein may suppress tumor invasion and metastasis. Alternative splicing results in multiple transcript variants. [provided by RefSeq, Jul 2013]