

## Product datasheet for **RG239427**

### Miz1 (ZBTB17) (NM\_001287604) Human Tagged ORF Clone

#### Product data:

Product Type:	Expression Plasmids
Product Name:	Miz1 (ZBTB17) (NM_001287604) Human Tagged ORF Clone
Tag:	TurboGFP
Symbol:	ZBTB17
Synonyms:	MIZ-1; pHZ-67; ZNF60; ZNF151
Mammalian Cell Selection:	Neomycin
Vector:	pCMV6-AC-GFP (PS100010)
E. coli Selection:	Ampicillin (100 ug/mL)



[View online »](#)

**ORF Nucleotide Sequence:**

>RG239427 representing NM\_001287604.  
 Blue=ORF Red=Cloning site Green=Tag(s)

```

GCTCGTTTAGTGAACCGTCAGAATTTTGTAAACGACTCACTATAGGGCGGCCGGGAATTCGTGCGACTG
GATCCGGTACCGAGGAGATCTGCCGCCCGCATCGCC
ATGTACACGGCCAAGCTGAGCCTGAGCCCTGAGAACGTGGATGATGTGCTGGCCGTGCCACTTTCCTC
CAAATGCAGGACATCATACGGCCTGCCATGCCCTCAAGTCACTTGTGAGCCGGCTACCGCCCTGGG
GGAAATGCGGAGGCCTTGGCCACAGAAGGAGGGGACAAGAGAGCCAAAGAGGAGAAGGTGGCCACCAGC
ACGCTGAGCAGGCTGGAGCAGGCAGGACGACGACACCCATAGGCCCCAGCAGGGACCTCAAGGAGGAG
CGCGGCGGTGAGGCCAGAGTGCAGGACGCGGTGCAGAGCAGACAGAGAAAGCCGATGCGCCCGGGAG
CCGCCGCTGTGGAGCTCAAGCCAGACCCACGAGTGGCATGGCTGCTGCAGAAGCTGAGGCCGCTTTG
TCCGAGAGCTCGGAGCAAGAAATGGAGGTGGAGCCCGCCGAAAGGGGAAGAGGAGCAAAGGAGCAA
GAGGAGCAAGAGGAGGAGGGCGCAGGGCCAGTGAAGTCAAGGAGGAGGGTCCAGCTGGAGAACGGA
GAGGCCCCCGAGGAGAACGAGAATGAGGAGTCAAGGAGTCAAGGAGGAGGGTCCAGCTGGAGAACGGA
GCCCGGGGCTGCGCTCAGGCACCTACGGCAGCCGACGAGTCAAGGCCTACGGCTCCGTATCCAC
AAGTGCAGGACTGTGGGAAGGAGTTACGCACACGGGGAACCTCAAGCGGCACATCCGCATCCACAG
GGGAGAAGCCCTTCTCGTGCAGGAGTGCAGCAAGGCCTTTCCGACCCGGCCGCTGCAAGGCCCAT
GAGAAGACGCACAGCCCTCTGAAGCCCTACGGCTGCGAGGAGTGCAGGAAAGAGCTACCGCCTCATAGC
CTGCTGAACCTGCACAAGAAGCGGCACTCGGGCAGGGCGCTACCGCTGCGAGGACTGCGGCAAGCTC
TTCACCACCTCGGGCAACCTCAAGCGCCACCAGCTGGTGCACAGCGGGGAGAAGCCCTACAGTGCAGC
TACTGCGGCCGCTCCTTCTCCGACCCACTTCCAAGATGCGCCACCTGGAGACCCACGACACGGACAAG
GAGCACAAGTGCCACACTGCGACAAGAAGTCAACCAGGTAGGGAACCTGAAGGCCACCTGAAGATC
CACATCGCTGACGGGCCCTCAAGTGCCGAGAGTGTGGGAAGCAGTTACCACCTCAGGGAACCTGAAG
CGGCACCTTCGGATCCACAGCGGGGAGAAGCCCTACGTGTGCATCCACTGCCAGGCAGAGTTTGCAGAC
CCCGGCGCTCTGCAGCGGCACGTCCGCATTACACAGGTGAGAAGCCATGCCAGTGTGTGATGTGCGGT
AAGGCCTTACCCAGGCCAGCTCCCTCATCGCCACGTGCGCCAGCACACCGGGGAGAAGCCCTACGTC
TGCGAGCGCTGCGGCAAGAGATTCTGTCAGTCCAGCCAGTTGGCCAATCATATTCGCCACCACGACAAC
ATCCGCCACACAAGTGCAGCGTGTGCAGCAAGGCCTTCGTGACGTGGGGACCTGTCCAAGCACATC
ATCATTACACTGGAGAGAAGCCTTACCTGTGTGATAAGTGTGGGCGTGGCTTCAACCGGGTAGACAAC
CTGCGCTCCACGTGAAGACCGTGCACCAGGGCAAGGCAGGCATCAAGATCCTGGAGCCCGAGGAGGGC
AGTGAGGTGAGCGTGGTCACTGTGGATGACATGGTACGCTGGCTACCGAGGCCTGGCAGCGACAGCC
GCACTCAGCTCAGAGTGGTCCCGTGGGAGCTGCAAGTGCAGCCGATGAGACGGAAGTCCCTGAAGGCC
GAGATCAGCAAAGCTGTGAAGCAAGTGCAGGAAGAAGACCCCAACTCACATCCTCTACGCTGTGAC
TCTGTGGGGACAAGTTTCTGGATGCCAACAGCCTGGCTCAGCATGTGCGAATCCACACAGCCAGGCA
CTGGTCAATGTTCCAGACAGACGCGGACTTCTATCAGCAGTATGGGCCAGGTGGCACGTGGCTGCCGGG
CAGGTGCTGACGGCTGGGAGCTGGTCTTCCGCCCTCGCGACGGGGCTGAGGGCCAGCCGCACTGGCA
GAGACCTCCCCTACAGCTCCTGAATGTCCCCCGCTGCCGAG
ACGCGTACGCGGCCGCTCGAG - GFP Tag - GTTTAAAC
  
```

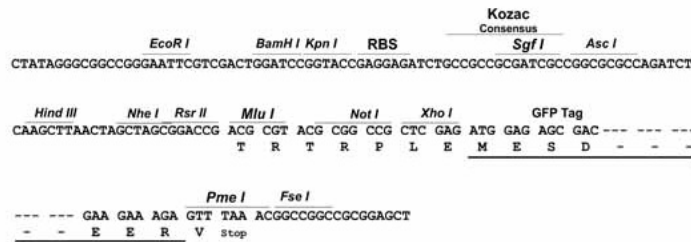
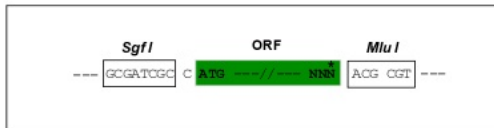
Protein Sequence: >Peptide sequence encoded by RG239427  
 Blue=ORF Red=Cloning site Green=Tag(s)

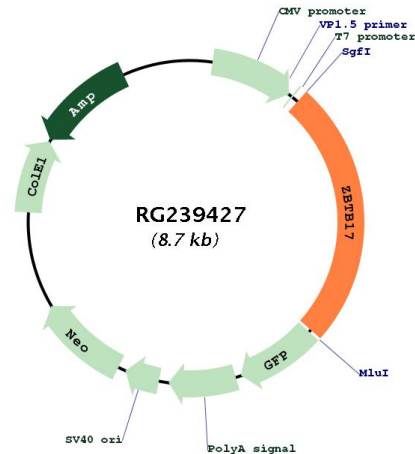
MYTAKLSLSPENVDDVLAVATFLQMQDIITACHALKSLAEPATSPGGNAEALATEGGDKRAKEEKVATS  
 TLSRLEQAGRSTPIGPSRDLKEERGGQAQSAASGAEQTEKADAPREPPPVELKPDPTSGMAAAEAEAL  
 SESSEQEMEVEPARKGEEEEQKEQEEQEEEGAGPAEVKEEGSQLENGEAPEENENEE SAGTDSGQELGSE  
 ARGLRSGTYGDRTESKAYGYSVIHKCEDCGKEFTHTGNFKRHIRIHTGEKPFSCRECSKAFSDPAACKAH  
 EKTHSPLKPYGCEECGKSYRLISLLNLHKKRHSGEARYRCEDCGKLF TTSGNLKRHQLVHSGEKPYQCD  
 YCGRSFDPTSKMRHLEHTDKEHKCPHCDKFNQVGNLKAHLKIHIADGPLKCRECGKQFTTSGNLK  
 RHLRIHSGEKPYVCIHCQRQFADPGALQRHVRIHTGEKPCQCVMGKAFTQASSLIAHVHQHTGEKPYV  
 CERCGKRFVQSSQLANHIRHHDNIRPHKCSVCSKAFVNVGDL SKHIIHTGEKPYL CDKCGRGNRVDN  
 LRSHVKT VHQGKAGIKILEPEEGSESVVTVDDMVTLATEALAATAVTQLTVVPVGA AVTADETEV LKA  
 EISKAVKQVQEEDPNTHILYACDSCGDKFLDANSLAQHVRIHTAALVMFQTDADFVQYQYGGGTWPAG  
 QVLQAGELVFRPRDGAEGQPALAETSPTAPECPPPAE  
 TRTRPLEMESDESGLPAMEIECRITGTLNGVEFELVGGGEGTPEQGRMTNKMKSTKGALTFSPYLLSHV  
 MGYGFYHFGTYP SGYENPFLHAINNGGYTNRIEKYEDGGVLHVFSYRYEAGRVI GDFKVMGTGFPE D  
 SVIFTDKIIRS NATVEHLHPMGDNDLDGSFTRTFLRDGGYSSVVD SHMHFKSAIHP SILQNGGPMFA  
 FRRVEEDHSNTELGIVEYQHAFKTPDADAGEERV

Restriction Sites: SgfI-MluI

Cloning Scheme:

Cloning sites used for ORF Shuttling:



**Plasmid Map:**


<b>ACCN:</b>	NM_001287604
<b>ORF Size:</b>	2181 bp
<b>OTI Disclaimer:</b>	The molecular sequence of this clone aligns with the gene accession number as a point of reference only. However, individual transcript sequences of the same gene can differ through naturally occurring variations (e.g. polymorphisms), each with its own valid existence. This clone is substantially in agreement with the reference, but a complete review of all prevailing variants is recommended prior to use. <a href="#">More info</a>
<b>OTI Annotation:</b>	This clone was engineered to express the complete ORF with an expression tag. Expression varies depending on the nature of the gene.
<b>Components:</b>	The ORF clone is ion-exchange column purified and shipped in a 2D barcoded Matrix tube containing 10ug of transfection-ready, dried plasmid DNA (reconstitute with 100 ul of water).
<b>RefSeq:</b>	<a href="#">NM_001287604.1</a> , <a href="#">NP_001274533.1</a>
<b>RefSeq Size:</b>	2763 bp
<b>RefSeq ORF:</b>	2184 bp
<b>Locus ID:</b>	7709
<b>Cytogenetics:</b>	1p36.13
<b>Protein Families:</b>	Transcription Factors
<b>Protein Pathways:</b>	Cell cycle
<b>MW:</b>	79.8 kDa

**Gene Summary:**

This gene encodes a zinc finger protein involved in the regulation of c-myc. The symbol MIZ1 has also been associated with PIAS2 which is a different gene located on chromosome 18. [provided by RefSeq, Jul 2008]