

Product datasheet for **RG239423**

DRP1 (DNM1L) (NM_001278463) Human Tagged ORF Clone

Product data:

Product Type:	Expression Plasmids
Product Name:	DRP1 (DNM1L) (NM_001278463) Human Tagged ORF Clone
Tag:	TurboGFP
Symbol:	DNM1L
Synonyms:	DLP1; DRP1; DVLP; DYMPLE; EMPF; EMPF1; HDYNIV; OPA5
Mammalian Cell Selection:	Neomycin
Vector:	pCMV6-AC-GFP (PS100010)
E. coli Selection:	Ampicillin (100 ug/mL)



[View online »](#)

ORF Nucleotide
Sequence:

>RG239423 representing NM_001278463.
Blue=ORF Red=Cloning site Green=Tag(s)

```
GCTCGTTTAGTGAACCGTCAGAATTTTGTAAACGACTCACTATAGGGCGGCCGGGAATTCGTGACTG
GATCCGGTACCGAGGAGATCTGCCGCCGCGATCGCC
ATGGAGGCGCTAATTCCTGTCTATAAACAAGCTCCAGGACGTCTTCAACACGGTGGGCGCCGACATCATC
CAGCTGCCTCAAATCGTCTAGTGGGAACGCAGAGCAGCGAAAGAGCTCAGTGCTAGAAAGCCTGGTG
GGGAGGGACCTGCTTCCCAGAGGTAAGTGAATTGTCACCCGGAGACCTCTCATTCTGCAACTGGTCCAT
GTTTCACAAGAAGATAAACCGAAAAACAACAGGAGAAGAAAATGGGGTGAAGCAGAAGAATGGGGTAAA
TTTCTTACACCAAAAAAAGCTTTACACGGATTTTGTGAAATTCGACAAGAAATGAAAATGAAACA
GAAAGAATTTAGGAAATAATAAGGGAGTAAGCCCTGAACCAATTCATCTTAAGATTTTTTACCCCAAC
GTTGTCAATTTGACACTTGTGGATTTGCCAGGAATGACCAAGGTGCCTGTAGGTGATCAACCTAAGGAT
ATTGAGCTCAAATCAGAGAGCTCATTCTCGGTTTCATCAGTAATCCTAATTCATTATCCTCGCTGTC
ACTGCTGTAATACAGATATGGCAACATCAGAGGCACTTAAAATTTCAAGAGAGGTAGATCCAGATGGT
CGCAGAACCCTAGCTGTAATCACTAAACTTGATCTCATGGATGCGGGTACTGATGCCATGGATGTATTG
ATGGGAAGGGTTATTCCAGTCAAACCTTGAATAATTGGAGTAGTTAACAGGAGCCAGCTAGATATTAAC
AACAGAAGAGTGAACCTGATTCATCCGTGATGAGTATGCTTTTCTTAAAAGAAATATCCATCTCTG
GCCAATAGAAATGGAACAAAGTATCTTGCTAGGACTCTAAACAGGTTACTGATGCATCACATCAGAGAT
TGTTTACCAGAGTTGAAAACAAGATAAATGTTCTAGCTGCTCAGTATCAGTCTCTTCTAAATAGCTAC
GGTGAACCCGTTGATGATAAAGTGCTACTTTACTCCAATTTATACCAATTTGCCACAGAATATTGT
AACACTATTGAAGGAAGTCAAAATATATTGAACTTCGGAGCTATGCGGTGGTGTGCTAGAATTTGTTAT
ATTTTCCATGAGACTTTTGGGCGAACCTTAGAATCTGTTGATCCACTTGGTGGCCTAACACTATTGAC
TTACTGGTGAAGCGCAAAATCAAACGCTCTAGAAGAGCCAGCCTCCGCTGTGTGGAAGTGGTTCATGAG
GAAATGCAAAGGATCATTGAGCACTGTAGCAATTACAGTACACAGGAATTGTTACGATTTCTAAACTT
CATGATGCCATAGTTGAAGTGGTACTTGTCTTCTCGTAAAAGTTGCCTGTTACAAATGAAATGGTC
CATAACTTAGTGGCAATGAACTGGCTTATCAACACAAAACATCCAGACTTTGCTGATGCTTGTGGG
CTAATGAACAATAATATAGAGGAACAAAGGAGAAACAGGCTAGCCAGAGAATTACCTTCAGCTGTATCA
CGAGACAAGTCTTCTAAAGTTCCAAGTCTTTGGCACCTGCCTCCAGGAGCCCTCCCCGCTGCTTCT
GCTGAGGCTGATGGCAAGTTGCATCTGGAGGTGGTGGGGTGGAGATGGTGTTCAGAACAACCACA
GGCAACTGGAGAGGAATGCTGAAAACCTCAAAGCTGAAGAGTTATTAGCAGAAGAAAAATCAAACCC
ATTCCAATTATGCCAGCCAGTCCACAAAAGGTCATGCCGTGAACCTGCTAGATGTGCCAGTTCCTGTT
GCACGAAAATATCTGCTCGGGAACAGCGAGATTGTGAGGTTATTGAACGACTCATTAAATCATATTTT
CTCATTGTGAGAAAGAATATTCAAGACAGTGTGCCAAAGGCAGTAATGCATTTTTTGGTTAATCATGTG
AAAGACTCTTCAGAGTGTAGTGTAGGCCAGCTGTATAAATCATCCTTATTGGATGATCTTCTGACA
GAATCTGAGGACATGGCAGCGCAGGAAAGAAGCAGCTGATATGCTAAAGGCATTACAAGGAGCCAGT
CAAATTTGCTGAAATCCGGGAGACTCATCTTTGG
ACGCGTACGCGGCCGCTCGAG - GFP Tag - GTTAAAC
```

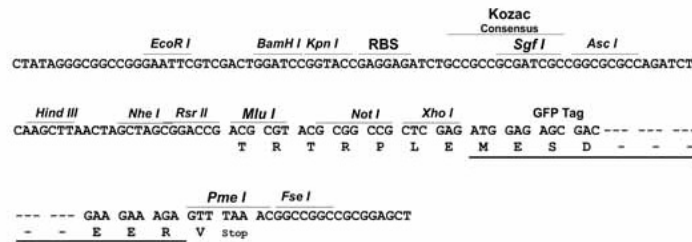
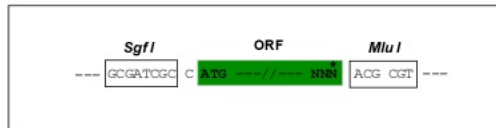
Protein Sequence: >Peptide sequence encoded by RG239423
 Blue=ORF Red=Cloning site Green=Tag(s)

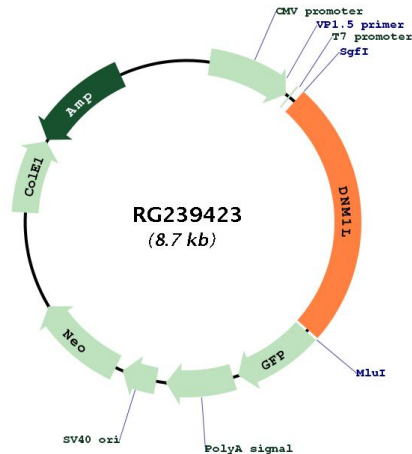
MEALIPVINKLQDVFNVTGADIQLPQIVVVGTSQSSGKSSVLESLVGRDLLPRGTGIVTRRPLILQLVH
 VSQEDKRKTTGEENGVEAEWGFHLHTKNKLYTDFDEIRQEIENETERISGNKGVSPPEIHLKIFSPN
 VVNLTLVDLPGMTKVPVGDQPKDIELQIRELILRFISNPNSIILAVTAANTDMATSEALKISREVDPDG
 RRTLAVITKLDLMDAGTDAMDVLMGRVIPVKLGIIGVVNRSQLDINNKKSVTDSIRDEYAFQKKYPSL
 ANRNGTKYLARTLNRLMHIRDCLPELKTTRINVLAAQYQSLLNSYGEPVDDKSATLLQLITKFATEYC
 NTIEGTAKYIETSELCGGARICYIFHETFGRTLESVDPLGGLNTIDILTAINRATGPRPALFVPEVSFE
 LLVKRQIKRLEEPSLRCVELVHEEMQRIIQHCSNYSTQELLRFPKLHDAIVEVVTCLLRKRLPVTNEMV
 HNLVAIELAYINTKHPDFADACGLMNNNIEEQRRLARELPSAVSRDKSSKVPALAPASQEPSAAS
 AEADGKVASGGGGVGDGVQEPPTGNWRGMLKTSKAEELLAEEKSKPIPIIMPASPQKGHAVNLLDVPVPV
 ARKLSAREQRDCEVIERLIKSYFLIVRKNIQDSVPKAVMHFLVNHVKDTLQSELVQGLYKSSLLDDLLT
 ESEDMAQRKEAADMLKALQGASQIIAIRETHLW
 TRTRPLEMESDESGLPAMEIECRITGTLNGVEFELVGGGEGTPEQGRMTNKMSTKGALTFSPYLLSHV
 MGYGFYHFGTYPSTYENPFLHAINNGGYTNRIEKYEDGGVLHVSFSYRYEAGRVIGDFKVMGTGFPED
 SVIFTDKIIRSNAIVEHLHPMGDNDLDGSFTRTFLRDGGYSSVVDSHMHFKSAIHPSILQNGGPMFA
 FRRVEEDHSNTELGIVEYQHAFKTPDADAGEERV

Restriction Sites: SgfI-MluI

Cloning Scheme:

Cloning sites used for ORF Shuttling:



Plasmid Map:


ACCN: NM_001278463

ORF Size: 2175 bp

OTI Disclaimer: The molecular sequence of this clone aligns with the gene accession number as a point of reference only. However, individual transcript sequences of the same gene can differ through naturally occurring variations (e.g. polymorphisms), each with its own valid existence. This clone is substantially in agreement with the reference, but a complete review of all prevailing variants is recommended prior to use. [More info](#)

OTI Annotation: This clone was engineered to express the complete ORF with an expression tag. Expression varies depending on the nature of the gene.

Components: The ORF clone is ion-exchange column purified and shipped in a 2D barcoded Matrix tube containing 10ug of transfection-ready, dried plasmid DNA (reconstitute with 100 ul of water).

RefSeq: [NM_001278463.1](#), [NP_001265392.1](#)

RefSeq Size: 4582 bp

RefSeq ORF: 2178 bp

Locus ID: 10059

UniProt ID: [O00429](#)

Cytogenetics: 12p11.21

Protein Pathways: Endocytosis, Fc gamma R-mediated phagocytosis

MW: 81 kDa

Gene Summary:

This gene encodes a member of the dynamin superfamily of GTPases. The encoded protein mediates mitochondrial and peroxisomal division, and is involved in developmentally regulated apoptosis and programmed necrosis. Dysfunction of this gene is implicated in several neurological disorders, including Alzheimer's disease. Mutations in this gene are associated with the autosomal dominant disorder, encephalopathy, lethal, due to defective mitochondrial and peroxisomal fission (EMPF). Alternative splicing results in multiple transcript variants encoding different isoforms. [provided by RefSeq, Jun 2013]