

## Product datasheet for **RG239392**

### ITGB6 (NM\_001282389) Human Tagged ORF Clone

#### Product data:

Product Type:	Expression Plasmids
Product Name:	ITGB6 (NM_001282389) Human Tagged ORF Clone
Tag:	TurboGFP
Symbol:	ITGB6
Synonyms:	A11H
Mammalian Cell Selection:	Neomycin
Vector:	pCMV6-AC-GFP (PS100010)
E. coli Selection:	Ampicillin (100 ug/mL)



[View online »](#)

**ORF Nucleotide Sequence:**

>RG239392 representing NM\_001282389.  
 Blue=ORF Red=Cloning site Green=Tag(s)

```
GCTCGTTTAGTGAACCGTCAGAATTTTGTAAATACGACTCACTATAGGGCGGCCGGGAATTCGTGACTG
GATCCGGTACCGAGGAGATCTGCCGCCACGATCGCC
ATGATCACGTACAAGGTGGCTGTGCCCTGGGAGGTGCAGAAAACCTGTGAAGACTGCCTGCTTATTGGAC
CTCAGTGTGCCTGGTGTGCTCAGGAGAATTTACTCATCCATCTGGAGTTGGCGAAAGGTGGTGCAGCAG
ACTCTGCAGGTGCATGTCCGCCAGACTGAGGACTACCCGGTGGATTTGTATTACCTCATGGACCTCTCC
GCCTCCATGGATGACGACCTCAACACAATAAAGGAGCTGGGCTCCCGGCTTTCCAAGAGATGTCTAAA
TTAACCAGCAACTTTAGACTGGGCTTCGGATCTTTTGTGGAAAAACCTGTATCCCCTTTTGTGAAAAACA
ACACCAGAAGAAATTGCCAACCTTGCAGTAGTATTCCATACTTCTGTTTACCTACATTTGGATTCAAG
CACATTTTGCATTGACAAATGATGCTGAAAGATTCAATGAAATTGTGAAGAATCAGAAAATTTCTGCT
AATATTGACACACCCGAAGGTGGATTTGATGCAATTATGCAAGCTGCTGTGTGAAGGAAAAATTTGGC
TGGCGGAATGACTCCCTCCACCTCCTGGTCTTTGTGAGTGTGCTGATTCTATTTTGAATGGACAGC
AAACTAGCAGGCATCGTATTCTAATGACGGCTCTGTCACTTGGACAGCAAGAATGAATACTCCATG
TCAACTGTCTTGAATATCCAACAATTGGACAACCTCATTGATAAACTGGTACAAAACAACGTGTTATTG
ATCTTCGTGTAAACCAAGAACAAGTTCATTTATATGAGAATTACGCAAAACTTATTCTGGAGCTACA
GTAGGTCTACTTCAGAAGGACTCCGAAACATTCTCCAGCTGATCATCTCAGCTTATGAAGAACTGCGG
TCTGAGGTGGAAGTGAAGTATTAGGAGACTGAAGGACTCACTTGTCAATTTACAGCCATCTGTAAC
AACGGTACCCTCTTCCAACCAAAAAGAAATGCTCTCACATGAAAGTGGGAGACACAGCTTCCTTCAGC
GTGACTGTGAATATCCCACACTGCGAGAGAAGAAGCAGGCACATTATCATAAAGCCTGTGGGGCTGGGG
GATGCCCTGGAATTACTTGTGAGCCAGAAATGCAACTGCGACTGTCAGAAAGAAGTGAAGTGAACAGC
TCCAATGTACCACGGGAACGGCTCTTCCAGTGTGGGTGTGTGCCTGCCACCCTGGCCACATGGGG
CCTCGCTGTGAGTGTGGGAGGACATGCTGAGCACAGATTCTGCAAGGAGGCCCCAGATCATCCCTCC
TGCAGCGAAGGGGTGACTGCTACTGTGGCAGTGTATCTGCCACTTGTCTCCCTATGGAACATTTAT
GGGCTTATTGCCAGTGTGACAATTTCTCTGCGTGAGACACAAAGGGTCTCTGCGGAGGTAACGGC
GACTGTGACTGTGGTGAATGTGTGTGCAGGAGCGGCTGGACTGGCGAGTACTGCAACTGCACCACCAGC
ACGGACTCCTGCGTCTCTGAAGATGGAGTGTCTGCAGCGGGCGCGGGGACTGTGTTTGTGGCAAGTGT
GTTTGCACAAACCCTGGAGCCTCAGGACCAACCTGTGAACGATGTCTACCTGTGGTGACCCCTGTAAC
TCTAAACGGAGCTGCATTGAGTGCCACCTGTGAGCAGCTGGCCAAGCCCGAGAAGATGTGTGGACAAG
TGCAAACTAGCTGGTGCACCATCAGTGAAGAAGAAGATTTCTCAAAGGATGGTTCTGTTTCTCTGCTCT
CTGCAAGGAGAAAATGAATGTCTTATTACATTCCTAATAACTACAGATAATGAGGGGAAAACCATCATT
CACAGCATCAATGAAAAAGATTGTCCGAAGCCTCCAAACATTCCCATGATCATGTTAGGGGTTTCCCTG
GCTATTCTTCTCATCGGGTTTGCCTACTGTGCATCTGGAAGCTACTGGTGTCAATTTATGATCGTAAA
GAAGTTGCCAAATTTGAAGCAGAACGATCAAAAGCCAAGTGGCAAACGGGAACCAATCCACTCTACAGA
GGATCCACAAGTACTTTTAAAAATGTAACTTATAAACACAGGGAAAAACAAAAGGTAGACCTTTCCACA
GATTGC
ACGCGTACGCGGCCGCTCGAG – GFP Tag – GTTTAAAC
```

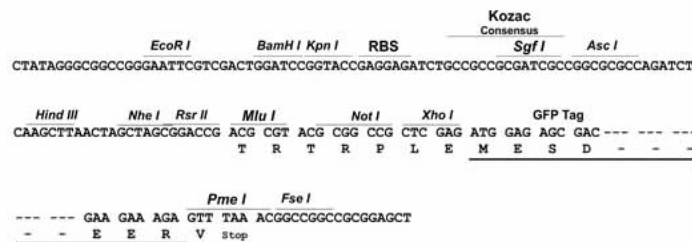
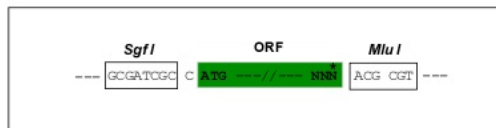
**Protein Sequence:** >Peptide sequence encoded by RG239392  
 Blue=ORF Red=Cloning site Green=Tag(s)

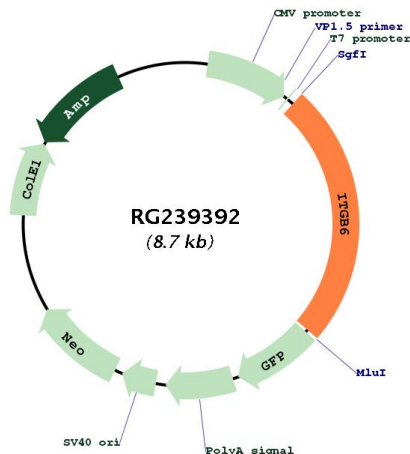
MITYKVAVPWEVQKPVKTAALLDLVSPGVLRRIILLIHLELAKGGAQTLQVHVRQTEDYPVDLYLMDLS  
 ASMDDLNTIKELGSRLSKEMSKLTSNFRLLGFGSFVEKPVSPFVKTTPEEIANPCSSIPYFCLPTFGFK  
 HILPLTNDARFNEIVKNQKISANIDTPEGGFDAIMQAAVCKEIGWRNDSLHLLVFDSDADSHFGMDS  
 KLAGIVIPNDGLCHLDSKNEYSMTVLEYPITIGQLIDKLVQNNVLLIFAVTQEQVHLYENYAKLIPGAT  
 VGLLQKDSGNILQLIISAYEELRSEVELEVLGDTEGLNLSFTAICNNGTLFQHKKCSHMKVGDTSFS  
 VTVNIPHCERRSRHIIKPVGLDALELLVSPECNDCQKQKEVNSSKCHHGNGSFQCGVCACHPGHMG  
 PRCECGEDMLSTDSCKEAPDHPSCSGRDCYCGQCICHLSPYGNIIYGPYCQDNFSCVRHKGLCCGGNG  
 DCDCGECVCRSGWTGEYCNCTTSTDSCVSEDGVLCSGRGDCVCGKCVCTNPGASGPTCERCPTCGDPCN  
 SKRSCIECHLSAAGQAREECVDKCKLAGATISEEEDFSKDGVSVCSLQGENECLITFLITDNEGKTI  
 HSINEKDCPKPPNIPMIMLVSLAILLIGVLLCIWKLVSFHDRKEVAKFEERSKAKWQTGTNPLYR  
 GSTSTFKNVTYKHREKQKVDLSTDC  
**TRTRPLEMESDESGLPAMEIECRITGTLNGVEFELVGGEGTPEQGRMTNKMSTKGALTFSPYLLSHV**  
**MGYGFYHFGTYPSTYENPFLHAINNGGYNTRIEKYEDGGVLHVSFSYRYEAGRVIGDFKVMGTGFPED**  
**SVIFTDKIIRSNAIVEHLHPMGDNDLDGSFTRTFLSRDGGYSSVVDSHMHFKSAIHPISILQNGGPMFA**  
**FRRVEEDHSNTELGIVEYQHAFKTPDADAGEERV**

**Restriction Sites:** SgfI-MluI

**Cloning Scheme:**

Cloning sites used for ORF Shuttling:



**Plasmid Map:**


<b>ACCN:</b>	NM_001282389
<b>ORF Size:</b>	2145 bp
<b>OTI Disclaimer:</b>	The molecular sequence of this clone aligns with the gene accession number as a point of reference only. However, individual transcript sequences of the same gene can differ through naturally occurring variations (e.g. polymorphisms), each with its own valid existence. This clone is substantially in agreement with the reference, but a complete review of all prevailing variants is recommended prior to use. <a href="#">More info</a>
<b>OTI Annotation:</b>	This clone was engineered to express the complete ORF with an expression tag. Expression varies depending on the nature of the gene.
<b>Components:</b>	The ORF clone is ion-exchange column purified and shipped in a 2D barcoded Matrix tube containing 10ug of transfection-ready, dried plasmid DNA (reconstitute with 100 ul of water).
<b>RefSeq:</b>	<a href="#">NM_001282389.2</a>
<b>RefSeq Size:</b>	4520 bp
<b>RefSeq ORF:</b>	2148 bp
<b>Locus ID:</b>	3694
<b>Cytogenetics:</b>	2q24.2
<b>Protein Families:</b>	Druggable Genome, Transmembrane
<b>Protein Pathways:</b>	Arrhythmogenic right ventricular cardiomyopathy (ARVC), Dilated cardiomyopathy, ECM-receptor interaction, Focal adhesion, Hypertrophic cardiomyopathy (HCM), Regulation of actin cytoskeleton
<b>MW:</b>	78.7 kDa

**Gene Summary:**

This gene encodes a protein that is a member of the integrin superfamily. Members of this family are adhesion receptors that function in signaling from the extracellular matrix to the cell. Integrins are heterodimeric integral membrane proteins composed of an alpha chain and a beta chain. The encoded protein forms a dimer with an alpha v chain and this heterodimer can bind to ligands like fibronectin and transforming growth factor beta 1. Alternate splicing results in multiple transcript variants. [provided by RefSeq, Sep 2013]