

Product datasheet for **RG239391**

CDRT1 (NM_001282540) Human Tagged ORF Clone

Product data:

| | |
|---------------------------|---|
| Product Type: | Expression Plasmids |
| Product Name: | CDRT1 (NM_001282540) Human Tagged ORF Clone |
| Tag: | TurboGFP |
| Symbol: | CDRT1 |
| Synonyms: | C17ORF1; C17ORF1A; C17ORF1; FBXW10B; FBXW10P1; HREP; SM25H2 |
| Mammalian Cell Selection: | Neomycin |
| Vector: | pCMV6-AC-GFP (PS100010) |
| E. coli Selection: | Ampicillin (100 ug/mL) |



[View online »](#)

ORF Nucleotide Sequence:

>RG239391 representing NM_001282540.
 Blue=ORF Red=Cloning site Green=Tag(s)

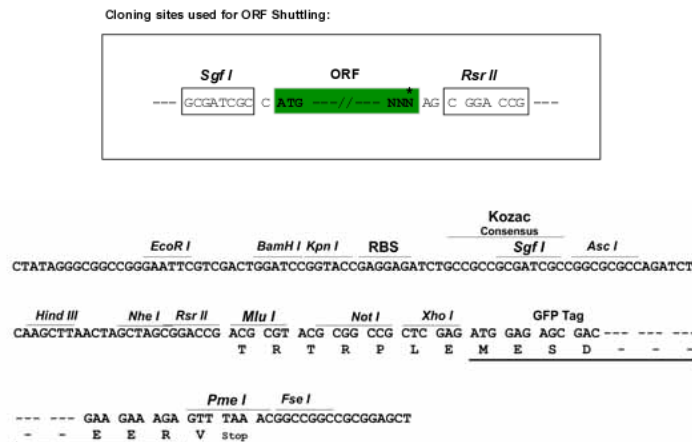
```
GCTCGTTTAGTGAACCGTCAGAATTTTGTAAACGACTCACTATAGGGCGGCCGGGAATTCGTGACTG
GATCCGGTACCGAGGAGATCTGCCGCCGCGATCGCC
ATGGAAAACCTGGAATCAAGGCTCAAGAATGCCCCCTATTTTCGTTGTGAGAAGGGAACCGATTCCATC
CCTCTATGCCCGAAGTGTGAGACGCGTGTCTTAGCCTGGAAGATCTTCTCTACCAAAGAGTGGTTCTGC
AGGATCAATGACATATCACAGAGGAGTTTCTAGTTGGCATTCTGAAGCAGTTAAATAGCTTATATTGG
TTACACTATTTCCAAAATATCCTTCAGACCACACAGGAAAGGATTTTCATCTATAACAGGTCGCCGATC
GACCTCAGCAAGAAAGAGGGGAAAGTTGTGAAGTCTCCTTGAACCAAATGTTGGATAAAACAGTAGAA
CAGAAGATGAAAGAGATCTTGATTGGTTTGCACAGCACCCAGTGGACCAAGGCGAATTATACTCTC
TTACTGCTGCAGATGTGCAACCCCAAATTAAGTCTACTGCTGCTGCAATGTGATCAGAGTCTGTTTCTG
AGAGAGGAGAACAATATCTCAGGGCTCAATCAAGACATCACAGATGTGTGTTTTTCCCCTGAGAAAGAC
CACAGCTCCAAGTCTGCGACCTACAAGTCTATTGGACAGCCAAAACCTCAGCACACATCCCTTCTTTG
TCCAAAGCCCCAGAAAATGAACACTTCTTGGGGCAGCATCTAACCTGAGGAACCATGGAGGAATTCA
CTCCGGTGATATCCGAAATGAATAGGCTGTTTTCTGGAAAAGCAGACATAACCAAGCCAGGGTACGAT
CCCTGCAATCTATTGGTTGACCTGGATGACATCAGAGACCTGTCTTCTGGGTTACAGCAAATACCGAGAC
TTCATCCGTTACCTGCCATCCACCTCTCCAAGTACATTTAAGAATGCTGGATAGACACACCCTGAAC
AAGTGCCTCTGTGAGCCAGCACTGGGCGCCATGGCTCAACAGGTCAAGATGGACTTGTGAGCGCAC
GGCTTCATTCAGAACCAGATTACCTTCTGAGGGGCTCTATAACAAGAGGAATTGATCCTAATTATGCC
AATAAGTTTTCTATCCAGTTCTAAAATGGTAGATGACGGGAAGAGCATGCGTGTGAAACATCCGAAG
TGAAGTTGAGAACGAAGAATGAGTACAACCTGTGGACTGCATACCAGAACGAGGAAACGAGCAGGTC
CTGATGGAGGAGAGAAAATGTTTTCTGTGGGACCTACAATGTTTCGATTCTCTGACACGTGGGATCAA
AACCGAGTCATCCACTATTCGGGGGAGATCTGATAGCTGTGTCATCTAATCGAAAAGATCCATCTTCTG
GACATCATACAAGTAAAAGCGATACCCGTTGAATTCAGGCCATGCTGGGAGTGTCCGGGCCCTCTTC
CTGTGTGAGGAGGAAAACCTTCTCCTAAGCGGGAGCTATGACCTAAGTATCAGATACTGGGATCTGAAA
AGTGGGGTTTGCACACGAATCTTCGGTGGTCACCAGGGGACTATCACTTGCATGGACTTGTGTAAGAAC
AGGCTCGTATCTGGAGGAAGAGATTGCCAGGTAAGATGAGGATGTAGACACAGGGAAGTGCCTGAAG
ACGTTTAGACACAAAGACCCCATCTTGGCCACCAGGATCAATGATACCTACATTGTGAGCAGCTGTGAG
CGAGGGCTGGTAAAAGTGTGGCACATTGCCATGGCCAGTTGGTAAAGACTCTCAGTGGCCACGAGGGA
GCTGTGAAATGCCTGTTCTTTGACCAGTGGCATCTCCTCTCAGGAAGCACTGATGGCCTGGTTCATGGCC
TGGAGCATGGTGGGAAGTACGAGCGCTGCCTGATGGCCTTCAAGCATCCCAAAGAGGTGCTCGACGTG
TCCTTCTCTTCCCGGTCATCAGCGCTGTGAGATGGCAAGATCCGAATTTACAATTTCTTCAAT
GGGAACGTGATGAAGGTGATAAAAGCCAATGGCAGAGGCGATCCTGTGCTGTCCTTCTTTATTAGGGC
AACAGTGTACTTACGGAAGACCTATCTGCCAGTTGAGTGAAGACAGATGGAAGGAGGTTAGGAAG
AAGGCAGAGAAGTCACTGGGATGTGCTGTAATAACCCACGCAAAACCGATGATGGGCTGAAGCTAAAG
CAC
AGGCGACCGACGCGTACGCGGCCGCTCGAG - GFP Tag - GTTAAAC
```

Protein Sequence: >Peptide sequence encoded by RG239391
 Blue=ORF Red=Cloning site Green=Tag(s)

MENLESRLKNAPYFRCEKGTDSIPLCRKCETRVLAWKIFSTKEWFCRINDISQRRFLVGILKQLNSLYL
 LHYFQNILQTTQKDFIYNRSRIDL SKKEGKVVKSSLNQLDKTVEQMKKEILYWFANSTQWTKANYTL
 LLLQMCNPKLLL TAANVIRVFLREENNISGLNQDITDVCFSPEKDHSSKSATSQYVWTAKTQHTSLPL
 SKAPENEHFLGAASNPEEPWRNSLRCSSEMNRLFSGKADITKPGYDPCNLLVDLDDIRDLSSGFSKYRD
 FIRYLPPIHL SKYILRMLDRHTLNK CASV SQHWAAMAQQVKMDLSAHGFIQNQITFLQGSYTRGIDPNYA
 NKVSI PVPKMVDDGKSMRVKHPKWLRTKNEYNLWTAYQNEETQQVLMEEERNVFCGTYNVRILSDTWDQ
 NRVIHYSGGDLIAVSSNRKIHLLDIIQVKAIPVEFRGHAGSVRALFLCEEENFLLSGSYDLSIRYWDLK
 SGVCTRIFGGHQGTITCMDLCKNRLVSGGRDCQVKVWDVDTGKCLKTFRHKDPILATRINDTYIVSSCE
 RGLVKVWHIAMAQLVKTL SGHEGAVKCLFFDQWHLLSGSTDGLVMAWSMVGKYERCLMAFKHPKEVLDV
 SLLFLRVISACADGKIRIYNFFNGNCKMVIKANGRGPVLSFFIQGNSDHLRKYLPVEWKDGRVRVK
 KAEKSAGMCCNNPRKTDGGLKXK
 SGPTRTRPLEMESDESGLPAMEIECRITGTLNGVEFELVGGGEGTPEQGRMTNKMSTKGALTFSPYLL
 SHVMGYGFYHFGTYPSTYENPFLHAINNGGYTNTRIEKYEDGGVLHVSFSYRYEAGRVI GDFKVMGTGF
 PEDSVIFTDKIIRSNATVEHLHPMGDNDLDGSFTRTFLRDGGYSSVVD SHMHFKSAIHPSILQNGGP
 MFAFRRVEEDHSNTELGIVEYQHAFKTPDADAGEERV

Restriction Sites: SgfI-RsrII

Cloning Scheme:



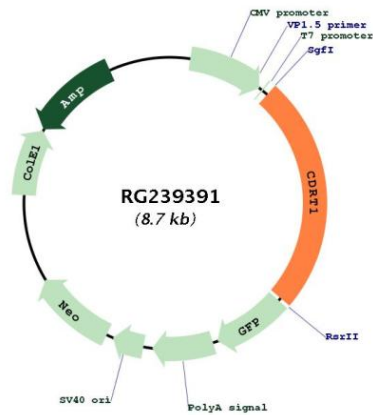
ACCN: NM_001282540

ORF Size: 2142 bp

OTI Disclaimer: The molecular sequence of this clone aligns with the gene accession number as a point of reference only. However, individual transcript sequences of the same gene can differ through naturally occurring variations (e.g. polymorphisms), each with its own valid existence. This clone is substantially in agreement with the reference, but a complete review of all prevailing variants is recommended prior to use. [More info](#)

OTI Annotation: This clone was engineered to express the complete ORF with an expression tag. Expression varies depending on the nature of the gene.

| | |
|----------------------|---|
| Components: | The ORF clone is ion-exchange column purified and shipped in a 2D barcoded Matrix tube containing 10ug of transfection-ready, dried plasmid DNA (reconstitute with 100 ul of water). |
| RefSeq: | <u>NM_001282540.1, NP_001269469.1</u> |
| RefSeq Size: | 3215 bp |
| RefSeq ORF: | 2145 bp |
| Locus ID: | 374286 |
| Cytogenetics: | 17p12 |
| MW: | 82.5 kDa |
| Gene Summary: | Members of the F-box protein family, such as FBXW10, are characterized by an approximately 40-amino acid F-box motif. SCF complexes, formed by SKP1 (MIM 601434), cullin (see CUL1; MIM 603034), and F-box proteins, act as protein-ubiquitin ligases. F-box proteins interact with SKP1 through the F box, and they interact with ubiquitination targets through other protein interaction domains (Jin et al., 2004 [PubMed 15520277]).[supplied by OMIM, Mar 2008] |

Product images:


Circular map for RG239391