

## Product datasheet for **RG239386**

### NFAT2 (NFATC1) (NM\_001278670) Human Tagged ORF Clone

#### Product data:

Product Type:	Expression Plasmids
Product Name:	NFAT2 (NFATC1) (NM_001278670) Human Tagged ORF Clone
Tag:	TurboGFP
Symbol:	NFAT2
Synonyms:	NF-ATC; NF-ATc1.2; NFAT2; NFATc
Mammalian Cell Selection:	Neomycin
Vector:	pCMV6-AC-GFP (PS100010)
E. coli Selection:	Ampicillin (100 ug/mL)



[View online »](#)

**ORF Nucleotide Sequence:**

>RG239386 representing NM\_001278670.  
 Blue=ORF Red=Cloning site Green=Tag(s)

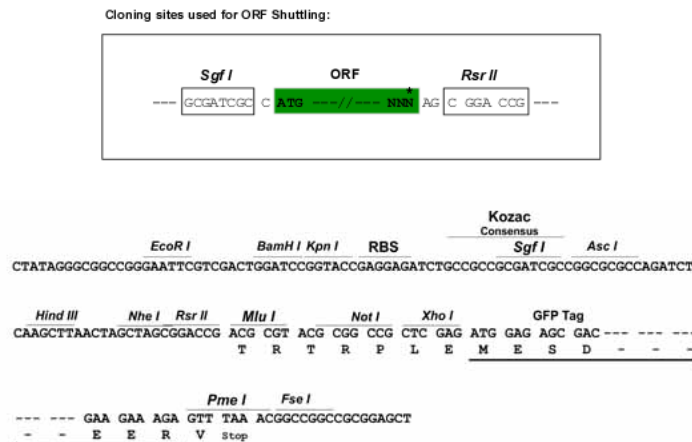
```
GCTCGTTTAGTGAACCGTCAGAATTTTGTAAACGACTCACTATAGGGCGGCCGGGAATTCGTGACTG
GATCCGGTACCGAGGAGATCTGCCGCCGCGATCGCC
ATGCCAAGCACCAGCTTCCAGTCCCTTCCAAGTTTCCACTTGGCCCTGCGGCTGCGGTCTTCGGGAGA
GGAGAAACTTTGGGGCCCGCGCCCGCGCCGCGCCGACCATGAAGTCAGCGGAGGAAGAACAATATGGC
TATGCATCTCCAACGTACGCCCGCCCTGCCGCTCCCCACGGCGCACTCCACCCTGCCGCCCCGTGC
CACAACCTTCAGACCTCCACACCGGGCATCATCCCGCGCGGATCACCCCTCGGGGTACGGAGCAGCT
TTGGACGGTGGGCCCGGGGCTACTTCTCTCCTCCGGCCACACCAGGCCTGATGGGGCCCTGCCCTG
GAGAGTCTCGCATCGAGATAACCTCGTCTTGGGCTGTACCACAACAATAACCAGTTTTTCCACGAT
GTGGAGGTGGAAGACGTCTCCCTAGCTCAAACGGTCCCCTCCACGGCCACGCTGAGTCTGCCACG
CTGGAGGCTACAGAGACCCCTCGTGCCTGAGCCCGCCAGCAGCTGTCTCCCGAGCTGCAACTCA
GAGGCCTCTCTACGAGTCCAACACTACTGTACCCGTACGCGTCCCCCAGACGTGCCATGGCAGTCT
CCCTGCGTGTCTCCAAGACCACGGACCCCGAGGAGGGCTTTCCCGCGGGCTGGGGCCTCGCACTG
CTGGGTTCCCGCGGCACTCCCCCTCCACTCGCCCCGCGCCAGCGTCACTGAGGAGAGCTGGCTGGGT
GCCCGCTCCTCCAGACCCGCGTCCCCTTGAACAAGAGGAAGTACAGCCTCAACGGCCGGACGCCGCC
TACTACCCCACTCGCCACGCCGTCCCGCACGGCTCCCGCGGGTCAAGCTGACCGACTCG
TGGTTGGGCAACACCACCAGTACACCAGCTCGGCCATCGTGCCGCAACACGGCTGACCACCGAC
AGCAGCTGGACTGGGAGATGGCGTCCCTGTCAAGTCCCGCAAGACCACCCTGGAGCAGCCGCCCTCA
GTGGCGCTCAAGTGGAGCCCGTGGGGAGGACCTGGGCAGCCCCCGCCCGCCGCGACTTCGCGCCC
GAAGACTACTCCTTTCCAGCACATCAGGAAGGGCGGCTTCTGCGACCAGTACCTGGCGGTGCCGAG
CACCCCTACCAGTGGGCGAAGCCCAAGCCCTGTCCCCTACGTCCTACATGAGCCCGACCTGCCCGCC
CTGGACTGGCAGCTGCCGTCCACTCAGGCCCGTATGAGCTTCGGATTGAGGTGCAGCCCAAGTCCAC
CACCGAGCCCACTACGAGACGGAGGCGAGCCGGGGGCGTGAAGGCGTGGCCGGAGGACACCCATC
GTGCAGCTGCATGGCTACTTGGAGAATGAGCCGCTGATGCTGCAGCTTTTATTGGGACGGCGGACGAC
CGCCTGCTGCGCCCGCACGCTTCTACCAGGTGCACCGCATCACAGGGAAGACCGTGTCCACCACCAGC
CACGAGGCCATCCTCTCAACACCAAAGTCTGGAGATCCCACTCCTGCCGAGAACAGCATGCGAGCC
GTCATTGACTGTCCGGAATCCTGAAACTCAGAACTCCGACATTGAACTTCGGAAGGAGAGACGGAC
ATCGGGAGGAAGAACACACGGGTACGGCTGGTGTCCGCGTTCAGTCCCACAACCCAGCGCCGACG
CTGTCCCTGCAGGTGGCCTCCAACCCCATCGAATGCTCCAGCGCTCAGCTCAGGAGCTGCCTCTGGTG
GAGAAGCAGAGCACGGACAGCTATCCGGTCTGGGCGGGAAGAAGATGGTCTGTCTGGCCACAATTC
CTGCAGGACTCCAAGGTATTTTCGTGGAGAAAGCCAGATGGCCACCATGTCTGGGAGATGGAAGCG
AAAAGTACCAGGACCTGTGCAAGCCGAATTTCTCTGGTGGTTGAGATCCCGCCATTTTCGGAATCAGAGG
ATAACCAGCCCGTTCACGTGAGTTTCTACGTCTGCAACGGGAAGAGAAAGCGAAGCCAGTACCAGCGT
TTCACCTACCTTCCCGCAACGTAATGAAATAATACGAAATGACCTCTCCAGCACGAGCACCCACTCC
AGCGGACCGACCGTACGCGGCCGCTCGAG - GFP Tag - GTTAAAC
```

**Protein Sequence:** >Peptide sequence encoded by RG239386  
 Blue=ORF Red=Cloning site Green=Tag(s)

MPSTSFVPVPSKFPLGAAAIVFRGETLGPAPRAGGTMKSAEEEHYGYASSNVSPALPLPTAHSTLPAPC  
 HNLQTSTPGIIPPADHPSGYGAALDGGPAGYFLSSGHTRPDGAPALESPRIEITSCLGLYHNNNQFFHD  
 VEVEDVLPSSKRSPSTATLSLPSLEAYRDPSCSPASSLSSRSCNSEASSYESNYSYPYASPQTSWPWQS  
 PCVSPKTTDPEEGFPRGLGACTLLGSPRHSPSTSPRASVTEESWLGARSSRPASPCNKRYSLNGRQPP  
 YSPHHSPTSPHGSPRVSVTDDSWLGNTTQYTSSAIVAAINALTTDSSLDLGDGVPVKSRKTTLEQPPS  
 VALKVEPVGEDLGSPPPADFAPEYSSFQHIRKGGFCQDQYLAVPQHPYQWAKPKPLSPTSYMSPTLPA  
 LDWQLPSHSGPYELRIEVQPKSHHRAHYETEGSRGAVKASAGGHPVQLHGYLENEPLMLQLFIGTADD  
 RLLRPHAFYQVHRITGKTVSTTSHEAILSNTKVIPLLPENSMRAVIDCAGILKLRNSDIELRKGETD  
 IGRKNTRVRLVFRVHVPQPSGRTLSQLVASNPIECSQSAQELPLVEKQSTDSYPVVGKKMVLSGHNF  
 LQDSKIVFEKAPDGHVWEMEAKTDRDLCKPNSLVVEIPFRNQRTISPVHVSFVVCNGKRKRKRSQYQR  
 FTYLPANVNEIIRNDLSSTSHS  
 SGPTRTRPLEMESDESGLPAMEIECRITGTLNGVEFELVGGGEGTPEQGRMTNKMSTKGALTFSPYLL  
 SHVMGYGFYHFGTYPSTYENPFLHAINNGGYTNTRIEKYEDGGVLHVSFSYRYEAGRVIQDFKVMGTGF  
 PEDSVIFTDKIIRSNTVEHLHPMGDNDLDGSFTRTFLRDGGYSSVVDSHMHFKSAIHPSILQNGGP  
 MFAFRVVEEDHSNTELGIVEYQHAFKTPDADAGEERV

**Restriction Sites:** SgfI-RsrII

**Cloning Scheme:**



**ACCN:** NM\_001278670

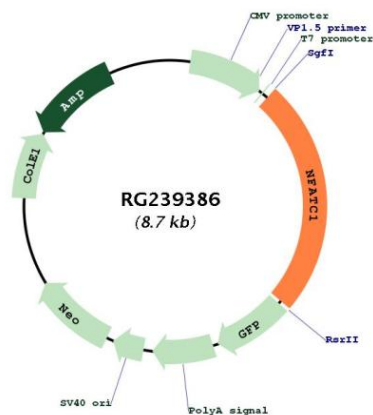
**ORF Size:** 2139 bp

**OTI Disclaimer:** The molecular sequence of this clone aligns with the gene accession number as a point of reference only. However, individual transcript sequences of the same gene can differ through naturally occurring variations (e.g. polymorphisms), each with its own valid existence. This clone is substantially in agreement with the reference, but a complete review of all prevailing variants is recommended prior to use. [More info](#)

**OTI Annotation:** This clone was engineered to express the complete ORF with an expression tag. Expression varies depending on the nature of the gene.

<b>Components:</b>	The ORF clone is ion-exchange column purified and shipped in a 2D barcoded Matrix tube containing 10ug of transfection-ready, dried plasmid DNA (reconstitute with 100 ul of water).
<b>RefSeq:</b>	<a href="#">NM_001278670.2</a>
<b>RefSeq Size:</b>	4341 bp
<b>RefSeq ORF:</b>	2142 bp
<b>Locus ID:</b>	4772
<b>UniProt ID:</b>	<a href="#">O95644</a>
<b>Cytogenetics:</b>	18q23
<b>Protein Families:</b>	Druggable Genome, Transcription Factors
<b>Protein Pathways:</b>	Axon guidance, B cell receptor signaling pathway, Natural killer cell mediated cytotoxicity, T cell receptor signaling pathway, VEGF signaling pathway, Wnt signaling pathway
<b>MW:</b>	77.8 kDa
<b>Gene Summary:</b>	The product of this gene is a component of the nuclear factor of activated T cells DNA-binding transcription complex. This complex consists of at least two components: a preexisting cytosolic component that translocates to the nucleus upon T cell receptor (TCR) stimulation, and an inducible nuclear component. Proteins belonging to this family of transcription factors play a central role in inducible gene transcription during immune response. The product of this gene is an inducible nuclear component. It functions as a major molecular target for the immunosuppressive drugs such as cyclosporin A. Multiple alternatively spliced transcript variants encoding distinct isoforms have been identified for this gene. Different isoforms of this protein may regulate inducible expression of different cytokine genes. [provided by RefSeq, Jul 2013]

### Product images:



Circular map for RG239386