

## Product datasheet for **RG239379**

### **MUC20 (NM\_001282506) Human Tagged ORF Clone**

#### **Product data:**

Product Type:	Expression Plasmids
Product Name:	MUC20 (NM_001282506) Human Tagged ORF Clone
Tag:	TurboGFP
Symbol:	MUC20
Synonyms:	MUC-20
Mammalian Cell Selection:	Neomycin
Vector:	pCMV6-AC-GFP (PS100010)
E. coli Selection:	Ampicillin (100 ug/mL)



[View online »](#)

ORF Nucleotide  
Sequence:

>RG239379 representing NM\_001282506.  
Blue=ORF Red=Cloning site Green=Tag(s)

```
GCTCGTTTAGTGAACCGTCAGAATTTTGTAAACGACTCACTATAGGGCGGCCGGGAATTCGTGACTG
GATCCGGTACCGAGGAGATCTGCCGCCACGATCGCC
ATGGGCTGTCTCTGGGGTCTGGCTCTGCCCTTTTCTTCTCTGCTGGGAGTTGGGGTCTCTGGGAGC
TCTGCAGGCCCCAGCACCCGACAGACACTGCGATGACAACGGACGACACAGAAGTGCCCGCTATG
ACTCTAGCACCGGGCCACGCCGCTCTGGAACTCAAACGCTGAGCGCTGAGACCTTTCTAGGGCTCA
ACCCAGCCGGCCCAATCCAGAAGCAGAGACAGGGGAGCCAAGAGAATTTCCCTGCAAGAGAGACC
AGGAGTTTCACAAAACATCTCCAACCTCATGGTGCTGATCGCCACCTCCGTGGAGACATCAGCCGCC
AGTGGCAGCCCGAGGGAGCTGGAATGACCACAGTTTACAGCCATCACAGGCAGTGATCCAGGGAAGCC
ATCTTTGACACCTTTGCACCGATGACAGCTCTGAAGAGGCAAAGACACTCACAATGGACATATTGACA
TTGGCTCACACCTCCACAGAAGTAAGGGCTGTCTCAGAGAGCAGCGCTCTTCCGACAGCCCCCAT
CCAGTCATCACCCGTCACGGGCTCAGAGAGCAGCGCTCTTCCGACGGCCCCCATCCAGTCATCACC
CCGTACGGGCTCAGAGAGCAGCGCTCTTCCGACGGCCCCCATCCAGTCATCACCCCGTCACGGGCC
TCAGAGAGCAGCGCTCTTCCGACGGCCCCCATCCAGTCATCACCCCGTCACGGGCTCAGAGAGCAGC
GCCTCTTCCGACGGCCCCCATCCAGTCATCACCCCGTCACGGGCTCAGAGAGCAGCGCTCTTCCGAC
GGCCCCATCCAGTCATCACCCCGTCACGGGCTCAGAGAGCAGCGCTCTTCCGACGGCCCCCATCCA
GTCATCACCCCGTCACGGGCTCAGAGAGCAGCGCTCTTCCGACGGCCCCCATCCAGTCATCACCCCG
TCACGGGCTCAGAGAGCAGCGCTCTTCCGACGGCCCCCATCCAGTCATCACCCCGTCACGGGCTCA
GAGAGCAGCGCTCTTCCGACGGCTCCATCCAGTCATCACCCCGTCACGGGCTCAGAGAGCAGCGCC
TCTTCCGACGGCCCCCATCCAGTCATCACCCCGTCACGGGCTCAGAGAGCAGCGCTCTTCCGACGGC
CCCCATCCAGTCATCACCCCTCATGGTCCCCGGGATCTGACGTCACCTCTCTCGTGAAGCCCTGGTG
ACTGTCACAAACATCGAGGTTATTAATTGCAGCATCACAGAAATAGAAACAACGACTTCCAGCATCCCT
GGGGCTCAGACACAGATCTCATCCCCACGGAAGGGTGAAGGCCTCGTCCACCTCCGATCCACCAGCT
CTGCCTGACTCCACTGAAGCAAAACACACATCACTGAGGTCACAGCCTCTGCCGAGACCCTGTCCACA
GCCGGCACACAGAGTCAGTGCACCTGATGCCACGGTTGGGACCCCACTCCCACTAACAGCGCCACA
GAAAGAGAAGTGACAGCACCCGGGGCCACGACCCTCAGTGGAGCTCTGGTACAGTTAGCAGGAATCCC
CTTGAAGAAACCTCAGCCCTCTCTGTTGAGACACCAAGTTACGTCAAAGTCTCAGGAGCAGCTCCGGTC
TCCATAGAGGCTGGGTGAGCAGTGGGCAAAACACTTCTTTGCTGGGAGCTCTGCTTCTCTCTACAGC
CCCTCGGAAGCCGCCCTCAAGAACTTACCCTTTCAGAGACCCGACCATGGACATCGCAACCAAGGGG
CCCTTCCCACCAGCAGGACCCCTTCTCTTGTCCCTCCGACTACAACCAACAGCAGCCGAGGGAGC
AACAGCACCTTAGCCAAGATCACAACTCAGCGAAGACCAGATGAAGCCCCAACAGCCACGCCACG
ACTGCCGGACGAGGCGGACACAGACGTGAGTGCAGGTGAAATGGAGGTTTCTCTCTCTGCGGCTG
AGTGTGGCTTCCCCGGAAGACCTCACTGACCCAGAGTGGCAGAAAGGCTGATGCAGCAGCTCCACCGG
GAACTCCACGCCACGCGCTCACTTCCAGTCTCCTTACTGCGTGTGAGGAGGGC
ACGCGTACGCGGCCGCTCGAG – GFP Tag – GTTTAAAC
```

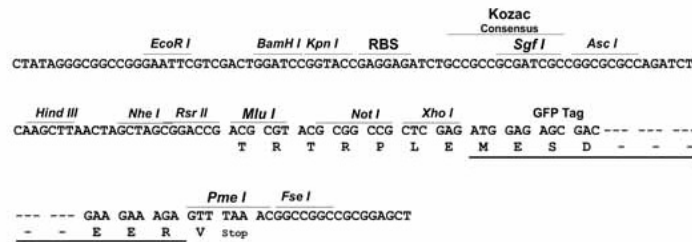
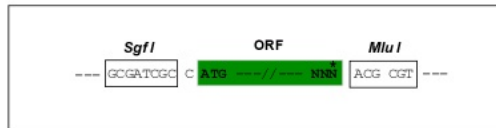
Protein Sequence: >Peptide sequence encoded by RG239379  
 Blue=ORF Red=Cloning site Green=Tag(s)

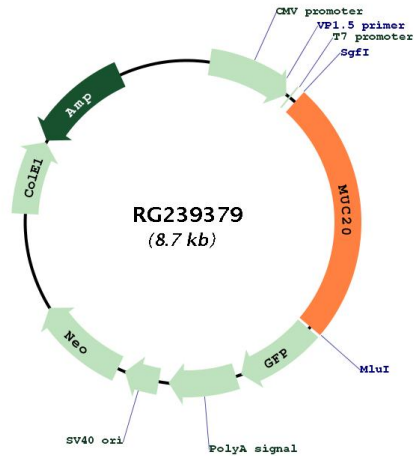
MGCLWGLALPLFFFCWEVGVSGSSAGPSTRRADTAMTTDDTEVPAMTLAPGHALETQTLAETSSRAS  
 TPAGPIPEAETRGAKRISPARETRSFTKTSNFMVLIATSVETSAASGSPEGAGMTTVQITGSDPREA  
 IFDTLCTDSSSEEAKLTMDILTLAHTSTEAKGLSESSASSDSPHPVITPSRAESSASSDGPHPVIT  
 PSRAESSASSDGPHPVITPSRAESSASSDGPHPVITPSRAESSASSDGPHPVITPSRAESSASSD  
 GPHPVITPSRAESSASSDGPHPVITPSRAESSASSDGPHPVITPSRAESSASSDGPHPVITPSRAS  
 ESSASSDGLHPVITPSRAESSASSDGPHPVITPSRAESSASSDGPHPVITPSWSPGSDVTLAEALV  
 TVTNIEVINCSITEIETTSSIPGASDTDLIPTEGVKASSTSDPPALPDSTEAKPHITEVTASAETLST  
 AGTTESAAPDATVGTPLPTNSATEREVTAPGATL SGALVTVSRNPLEETSALSVETPSYVKVSGAAPV  
 SIEAGSAVGKTTSFAGSSASSYSPSEAAALKNFPTSETPTMDIATKGFPTSRDPLSPVPTTTNSSRGT  
 NSTLAKITTSAKTTMKPPTATPTTARTRPTDVSAGENGGFLLLRLSVASPEDLTDPRVAERLMQQLHR  
 ELHAHAPHFQVSLLRVRRG  
 TRTRPLEMESDESGLPAMEIECRITGTLNGVEFELVGGEGTPEQGRMTNKMKSTKGALTFSPYLLSHV  
 MGYGFYHFGTYPSTYENPFLHAINNGGYTNRIEKYEDGGVLHVSFSYRYEAGRVIGDFKVMGTGFPED  
 SVIFTDKIIRSNAIVEHLHPMGDNDLDGSFTRTFSLRDGGYSSVVD SHMHFKSAIHPSILQNGGPMFA  
 FRRVEEDHSNTELGIVEYQHAFKTPDADAGEERV

Restriction Sites: SgfI-MluI

Cloning Scheme:

Cloning sites used for ORF Shuttling:



**Plasmid Map:**


**ACCN:** NM\_001282506

**ORF Size:** 2127 bp

**OTI Disclaimer:** The molecular sequence of this clone aligns with the gene accession number as a point of reference only. However, individual transcript sequences of the same gene can differ through naturally occurring variations (e.g. polymorphisms), each with its own valid existence. This clone is substantially in agreement with the reference, but a complete review of all prevailing variants is recommended prior to use. [More info](#)

**OTI Annotation:** This clone was engineered to express the complete ORF with an expression tag. Expression varies depending on the nature of the gene.

**Components:** The ORF clone is ion-exchange column purified and shipped in a 2D barcoded Matrix tube containing 10ug of transfection-ready, dried plasmid DNA (reconstitute with 100 ul of water).

**RefSeq:** [NM\\_001282506.2](#)

**RefSeq Size:** 2611 bp

**RefSeq ORF:** 2130 bp

**Locus ID:** 200958

**UniProt ID:** [Q8N307](#)

**Cytogenetics:** 3q29

**MW:** 72.4 kDa

**Gene Summary:**

This gene encodes a member of the mucin protein family. Mucins are high molecular weight glycoproteins secreted by many epithelial tissues to form an insoluble mucous barrier. The C-terminus of this family member associates with the multifunctional docking site of the MET proto-oncogene and suppresses activation of some downstream MET signaling cascades. The protein features a mucin tandem repeat domain that varies between two and six copies in most individuals. Multiple variants encoding different isoforms have been found for this gene. A related pseudogene, which is also located on chromosome 3, has been identified. [provided by RefSeq, Apr 2014]