

Product datasheet for **RG239376**

PIF1 (NM_001286497) Human Tagged ORF Clone

Product data:

Product Type:	Expression Plasmids
Product Name:	PIF1 (NM_001286497) Human Tagged ORF Clone
Tag:	TurboGFP
Symbol:	PIF1
Synonyms:	C15orf20; PIF
Mammalian Cell Selection:	Neomycin
Vector:	pCMV6-AC-GFP (PS100010)
E. coli Selection:	Ampicillin (100 ug/mL)



[View online »](#)

ORF Nucleotide Sequence:

>RG239376 representing NM_001286497.
 Blue=ORF Red=Cloning site Green=Tag(s)

```

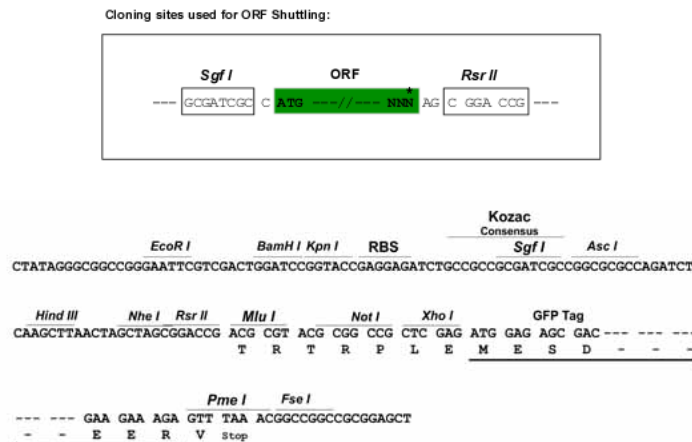
GCTCGTTTAGTGAACCGTCAGAATTTTGTAAACGACTCACTATAGGGCGGCCGGGAATTCGTGACTG
GATCCGGTACCGAGGAGATCTGCCGCCCGGATCGCC
ATGCTCTCGGGCATAAGAGCGGGCAGGGGAATATGAGGACTCGGAGCTGCGGTGCCGCTGGCTGTG
GAGGAGCTGAGCCCGGGCGGGCAGCCCGAAGGCAGGCCCTGCGCACCGCGGAGCTGAGCCTGGGT
CGCAACGAGCGCCGCGAGTTGATGCTGCCGCTGCAAGCGCCAGGGCCCGGGGGCGGCCGCTGCTTT
CCTCTGCGCGCCGCGCCTCTTACGCGTTTCGCCGAGGCCGGGCGCAGCACCTGCGGCTCCCGGCC
CACGACACCCCGGGGCCGGCGCAGTGCAGCTGCTGCTCTCGGACTGCCCCAGACCGCTGCGCCGC
TTCCTGCGCACATTGCGCCTCAAGCTGGCTGCGGCCCGGGTCCCGGGCCGGCTCCGCCGAGCGCAG
CTGCTGGGCCCGGCCCGCGACTTCGTACCATCAGCCCTGTGCAGCCGAGGAGCGGCGGCTCAGG
GCGGCCACCCGGTTCCGGACACTACGCTGGTGAAGCGGCTGTGGAGCCCGAGGCTGGGGCCGAGCCT
AGCACAGAAGCCCAAGGTGGCCCTGCCTGTGAAGAGGCTGAGCTTGCCTCCACCAAGCCACAGCTT
TCTGAGGAACAGGCTGCTGTGCTGAGGGCCGCTCTGAAAGGCCAGAGCATCTTCTCACTGGGAGTCA
GGAACAGGGAAGTCATATCTGCTAAAGCGAATCTGGGCTCACTGCCCCACAGGCACTGTGGCCACT
GCCAGCACTGGGGTGGCAGCCTGCCACATCGGGGGCACCACCCTCCATGCCTTTCAGGCGATCGGCTCA
GGCCAGGCTCCTCTAGCCAGTGTGTGGCCCTGGCCAAAGGCCAGGCGTGCAGGAGGGCTGGTGAAC
TGCCAGCGGTTGGTCAATTGACGAGATCTCAATGGTGGAGGCAGACCTGTTTGACAAACTGGAGGCCGTG
GCCAGAGCTGTCCGGCAGCAGAACAAAGCCATTCCGAGGGATCCAGCTCATCATCTGTGGGACTTTCTG
CAGCTGCCACCTGTGACCAAGGGCTCCAGCCCCACGGTTCTGCTTCCAGTCCAAGAGCTGGAAGAGG
TGTGTGCCAGTGACCCTGGAGCTGACCAAGGTGTGGAGGCAGGCAGACCAGACCTTATCTCTACTG
CAGGCCGTGAGGCTAGGCAAGTGTTCAGATGAGGTGACCCGCCAGTCCAGGCCACAGCTTCCACAAG
GTGGGGCGAGATGGGATTGTGGCCACGAGGCTCTGCACCCACCAGGATGATGTGGCCCTCACCAACGAG
AGGCGGCTTCAGGAGCTGCCAGGTAAGGTACACAGATTTGAGGCTATGGACAGCAACCCTGAGCTGGCC
AGTACCCTGGATGCCAGTGTCTGTTAGCCAGCTCCTTCAACTAAAGCTGGGGGCCAGGTGATGCTG
GTGAAAACTTATCGGTGTCTCGGGCCTGGTGAATGGTGCAGGGGGTGGTAGTTGGGTTGAGGCA
GAAGGGAGAGGGCTACCCAGGTGCGGTTCTGTGTGGAGTCACTGAGGTCATCCACGCTGACCGCTGG
ACGGTGCAGGCCACCGGGGCCAGCTCCTCAGTCGGCAGCAGCTGCCCTCCAGCTGGCCTGGGCGATG
TCCATCCACAAGAGCCAAGGCATGACCCTGGATTGTGTGGAGATTTCTCTGGGCCGTGTGTTTGCCAGT
GGCCAGGCTATGTGCCCTTTCTCGGGCCCGCAGCCTGCAGGGCCTACGTGTGCTGGACTTTGACCCC
ATGGCGGTTTCGCTGTGACCCCGTGTGCTGCACCTTCTATGCCACCCTGCGCGGGGCAGGAGCCTCAGT
CTGGCTGCAGAAGGGAGAGGCAATGAAGACAGGTGCTCCGGAAGCAGCATCAGGGCTCTTGAGGGGAC
TGGTGGGGACTCAGGCTGGGTGCAGCCTCCAAACAGAGAACGGAACCTTAGGTGTGCTCTACAGCTAGG
CCCAGCTAGCCAGCCAGAACAAACACCCTTCAGAGCCTAACCAAAGAACATAAGCTGCAAAATGTG
CACCCATATTTAAGCTGCTTTTTCAGGGGATAAATAGTGTGTTGGGGACAT
AGCGGACCGACGCGTACGCGGCCGCTCGAG - GFP Tag - GTTAAAC
  
```

Protein Sequence: >Peptide sequence encoded by RG239376
 Blue=ORF Red=Cloning site Green=Tag(s)

MLSGIEAAAGEYEDSELRCRVAVEELSPGGQPRRRQALRTAELSLGRNERRELMLRLQAPGPAGRPRCF
 PLRAARLFTRFAEAGRSTLRLPAHDTPGAGAVQLLLSDCPPDRLRRFLRTLRLKLAAPGPGPASARAQ
 LLGPRPRDFVTISPVQPEERRLRAATRVPDRTLKVRPVEPQAGAEPSTEAPRWPLPVKRLSLPSTKPQL
 SEEQAAVLRAVLKQGSIFFTGSAGTGKSYLLKRIKLSLPTGTVATASTGVAACHIGGTTLHAFAGIGS
 GQAPLAQCVALAQRPGVRQGWLNCQRLVIDEISMVEADLFDKLEAVARAVRQONKPFGGIQLIICGDFL
 QLPVTKGSQPPRFQSKSWKRCVPVTLLETKVWRQADQTFISLLQAVRLGRCSDEVTRQLQATASHK
 VGRDGIATRCLCTHQDDVALTNERRLQELPGKVHRFEAMDSNPELASTLDAQCPVSQLLQLKLAGQVML
 VKNLSVSRGLVNGARGVVVGFEEGRGLPQVRFLCGVTEVIHADRWTVQATGGQLSRQQLPLQLAWAM
 SIHKSQGMLDCEVIELGRVFAEQAYVALSRARSLQGLRVLDFDPMAVRCDPRVLHFYATLRRGRSL
 LAAEGRGNEDRCSGSSIRALGGDWWGLRLGAASKQRTLRVSTARPSLAQPRNTLQSLTKEHKLQNV
 HPYFKLLFQGINSVWGH
 SGPTRTRPLEMESDESGLPAMEIECRITGTLNGVEFELVGGGEGTPEQGRMTNKMSTKGALTFSPYLL
 SHVMGYGFYHFGTYPSTYENPFLHAINNGGYTNTRIEKYEDGGVLHVSFSYRYEAGRVIQDFKVMGTGF
 PEDSVIFTDKIIRSNTVEHLHPMGDNDLDGSFTRTFLRDGGYSSVVDSHMHFKSAIHPSILQNGGP
 MFAFRRVEEDHSNTELGIVEYQHAFKTPDADAGEERV

Restriction Sites: SgfI-RsrII

Cloning Scheme:



ACCN: NM_001286497

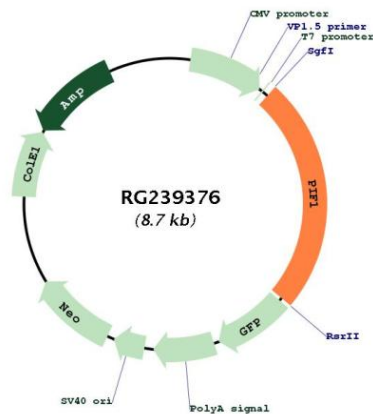
ORF Size: 2121 bp

OTI Disclaimer: The molecular sequence of this clone aligns with the gene accession number as a point of reference only. However, individual transcript sequences of the same gene can differ through naturally occurring variations (e.g. polymorphisms), each with its own valid existence. This clone is substantially in agreement with the reference, but a complete review of all prevailing variants is recommended prior to use. [More info](#)

OTI Annotation: This clone was engineered to express the complete ORF with an expression tag. Expression varies depending on the nature of the gene.

Components:	The ORF clone is ion-exchange column purified and shipped in a 2D barcoded Matrix tube containing 10ug of transfection-ready, dried plasmid DNA (reconstitute with 100 ul of water).
RefSeq:	<u>NM_001286497.2</u>
RefSeq Size:	2285 bp
RefSeq ORF:	2124 bp
Locus ID:	80119
UniProt ID:	<u>Q9H611</u>
Cytogenetics:	15q22.31
MW:	77.6 kDa
Gene Summary:	This gene encodes a DNA-dependent adenosine triphosphate (ATP)-metabolizing enzyme that functions as a 5' to 3' DNA helicase. The encoded protein can resolve G-quadruplex structures and RNA-DNA hybrids at the ends of chromosomes. It also prevents telomere elongation by inhibiting the actions of telomerase. Alternative splicing and the use of alternative start codons results in multiple isoforms that are differentially localized to either the mitochondria or the nucleus. [provided by RefSeq, Nov 2013]

Product images:



Circular map for RG239376