

Product datasheet for **RG239373**

PIP5KI gamma (PIP5K1C) (NM_001300849) Human Tagged ORF Clone

Product data:

Product Type:	Expression Plasmids
Product Name:	PIP5KI gamma (PIP5K1C) (NM_001300849) Human Tagged ORF Clone
Tag:	TurboGFP
Symbol:	PIP5K1C
Synonyms:	LCCS3; PIP5K-GAMMA; PIP5K1-gamma; PIP5Kgamma
Mammalian Cell Selection:	Neomycin
Vector:	pCMV6-AC-GFP (PS100010)
E. coli Selection:	Ampicillin (100 ug/mL)



[View online »](#)

ORF Nucleotide
Sequence:

>RG239373 representing NM_001300849.
Blue=ORF Red=Cloning site Green=Tag(s)

```
GCTCGTTTAGTGAACCGTCAGAATTTTGTAAACGACTCACTATAGGGCGGCCGGGAATTCGTGACTG
GATCCGGTACCGAGGAGATCTGCCGCCACGATCGCC
ATGGAGCTGGAGGTACCGGACGAGGCGGAGAGCGCTGAGGCGGGGCGCTGCCCTCGGAGCGCGCTGG
GCGGCAGAGAGCGGGGCGGCGGAGGTTGGCTCAGAAGAAGGCGGCCCAACAGAGGTTCTGTCCATG
ACGGCACAGCCGGGCCCTGGCCATGGGAAGAAGTTGGCCATCGAGGTGTGGACGCATCCGGCGAAACC
ACCTACAAGAAGACCACCTCCTCCACCCTGAAGGGTGCCATCCAGCTGGGCATCGGCTACACCGTGGGC
CACCTGAGCTCCAAGCCGAACGCGACGTGCTCATGCAGGACTTCTACGTGGTGGAGAGCATCTTCTTC
CCCAGCGAAGGCAGAACCTCACCCCGCCACCATTCCAGGACTTCCGCTTCAAGACCTATGCACCT
GTCGCCTCCGCTACTTCCGGGAGCTCTTTGGGATCCGGCCAGATGATTACTTGTACTCCCTGTGCAAT
GAGCCGCTGATCGAGCTGTCAACCCGGGCGCCAGTGGTCCCTTCTACGTACCAGCGACGACGAG
TTCATCATCAAGACCGTCATGCACAAGGAGGCCGAGTTCCCTGCAGAAGCTGCTCCCTGGCTACTACATG
AACCTCAACCAGAACCCGCGGACGCTGCTGCCAAGTTCTATGGGCTGTACTGCGTGCAGTCCGGGGGC
AAGAACATCCCGCTCGTGGTCATGAACAACATCCTGCCCGCGTGGTCAAGATGCACCTCAAGTTGAC
CTCAAGGGCTCCACCTACAAGCGGCGCGCCAGCAAGAAGGAGAAGGAGAAGACTTCCCCACCTACAAG
GACCTGGACTTTCATGCAGGACATGCCCGAGGGGCTCCTGCTGGACGCCGACACCTTACGCGCCCTGGTC
AAGACGCTGCAGCGGGACTGCCTGGTCTCGAAAGTTTCAAGATCATGGACTACAGCCTGCTGCTGGGC
GTGCACAACATCGACCAGCAGGCGGAGCGGAGCGGAGGCGCAGGGCGCCAGAGCACCTCAGATGAGAAG
CGGCCTGTGGGCCAGAAGGCGCTCTACTCCACGGCCATGGAGTCCATCCAGGGTGGCGCCGCGCGGGG
GAGGCCATCGAATCGGATGACACGATGGGCGGGATCCCCGCTGTGAACGGCCGCGGGGAGCGGCTGCTG
CTGCACATTGGCATCATCGACATCCTGCAGTCTACAGTTCATCAAGAACTGGAGCACACCTGGAAG
GCCCTCGTCCACGATGGGGACACGGTGTCCGTCCACCGCCAGCTTCTATGCCGAGCGTTTTTCAAG
TTCATGAGCAACACGGTCTTTTCCGAAGAAGTCCCTCCCTGAAGTCTCGCCCTCCAAGAAGGGGCGGGC
GGAGCCTTGCTAGCTGTGAAACCGCTGGGGCCACCGCTGCCTTCTCGGCCAGCCAGATCCCTAGCGAG
CGGGAGGAGGCCAGTACGACCTGCGGGGGGCCCGCAGTACCCACGCTGGAGGACGAAGGCCGGCCC
GACCTCCTGCCCTGCACGCCACCTTCTTTCGAAGAAGCCACTACAGCCTCCATTGCCAGACTCTGTCA
TCCACATCCCTCTCCATTCTGAGCGTCCCCCTCGGAGACGTCGGAGCAGCCGCGGTACAGGCGGGC
ACACAGTCGTCTGGACAGGATGGCAGGCCGAGGAGGAGCCACCCGCGGAAGAGGATCTGCAGCAGATT
ACAGTGCAGGTGGAGCCTGCGTGCAGCGTGGAGATTGTGGTCCCCAAGAGGAGGACGCAGGGTGGAG
GCTTCCCCGCGCGTGCCTCTGCTGCTGTTGAAGTAGAACTGCCAGCCAGGCCTCAGACGAGGAGGGC
GCACCTGCCAGCCAGGCCTCGGACGAGGAGGACGCGCCCGCCACCGACATCTACTTTTTACGGATGGG
AGGTAAGTACTTACTCTCCCGCCATCGCGACTGCGGGCCGTGACGCTGAGCGCCTCGGGGACTGTA
AGTGACCCGAGCCGGCCACCTGGGGAGAAGGGGAGTGGCCCTCGGGCAGCAGGAGCCGAGGTTCC
CGGCCGAAGCTCAGTGTCTGACGTCAGTTGTTTTCCAGAAGGGCTTTGGG
ACGCGTACGCGGCCGCTCGAG - GFP Tag - GTTTAAAC
```

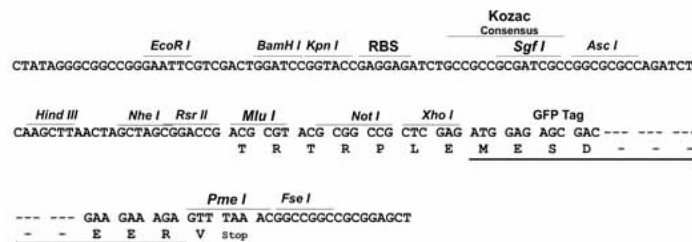
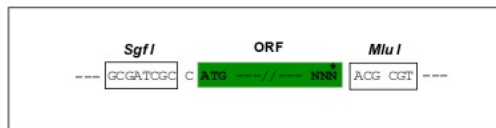
Protein Sequence: >Peptide sequence encoded by RG239373
 Blue=ORF Red=Cloning site Green=Tag(s)

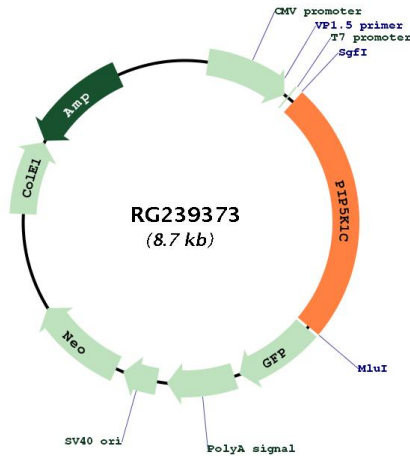
MELEVPDEAESAEAGAVPSEAAWAAESGAAAGLAQKKAAPTEVL SMTAQPGPGHGKKGHRGVDASGET
 TYKKTSSSTLKGAIQLGIGYTVGHLSSKPERDVLMDQFYVVEIFFPSEGSNLTPAHHFQDFRFKTYAP
 VAFRYFRELFGIRPDDYLSLCNEPLIELSNPGASGSLFYVTSDEDFI IKTMHKEAEFLQKLLPGYYM
 NLNQNPRTLLPKFYGLYCVQSGGKNIRVVMMNILLPRVVKMHLKFDLKGSTYKRRASKKEKEKSFTYK
 DLDFMQDMPEGLLLDADTF SALVKTLQRDCLVLESFKIMDYSLLLVGHNIDQHERERQAQGAQSTDEK
 RPYGQKALYSTAMESIQGGAARGEAIESDDTMGGIPAVNGRGERLLLHIGIIDILQSYRFIKKLEHTWK
 ALVHDGDTVSVHRPSFYAERFFKFSMNTVFRKNSSLKSSPSKKGRRGALLAVKPLGPTAAF SASQIPSE
 REEAQYDLRGARSYPTLEDEGRDLLPCTPPSFEEATTASIATLSSTLSIPERSPSETSEQPRYRRR
 TQSSGQDRPQEPPAEEDLQQITVQVEPACSV EIVVPKEEDAGVEASPAGASAAVEVETASQASDEEG
 APASQASDEEDAPATDIYFFTDGRYWIYSPRHRRLRAVTL SASGTVSDRSRPPWEGEAVPLGQQGAAGP
 RPEAQCLTSVVFQKGF
 TRTRPLEMESDESGLPAMEIECRITGTLNGVEFELVGGEGTPEQGRMTNKMKSTKGALTFSPYLLSHV
 MGYGFYHFGTYP SGYENPFLHAINNGGYNTRIEKYEDGGVLHVSFSYRYEAGRVI GDFKVMGTGFPE
 SVIFTDKIIRSNA TVEHLHPMGDNDLDGSFTRTFLRDGGYSSVVD SHMHFKA IHP SILQNGGPMFA
 FRRVEEDHSNTELGIVEYQHAFKTPDADAGEERV

Restriction Sites: SgfI-MluI

Cloning Scheme:

Cloning sites used for ORF Shuttling:



Plasmid Map:


ACCN:	NM_001300849
ORF Size:	2121 bp
OTI Disclaimer:	The molecular sequence of this clone aligns with the gene accession number as a point of reference only. However, individual transcript sequences of the same gene can differ through naturally occurring variations (e.g. polymorphisms), each with its own valid existence. This clone is substantially in agreement with the reference, but a complete review of all prevailing variants is recommended prior to use. More info
OTI Annotation:	This clone was engineered to express the complete ORF with an expression tag. Expression varies depending on the nature of the gene.
Components:	The ORF clone is ion-exchange column purified and shipped in a 2D barcoded Matrix tube containing 10ug of transfection-ready, dried plasmid DNA (reconstitute with 100 ul of water).
RefSeq:	NM_001300849.2
RefSeq Size:	3035 bp
RefSeq ORF:	2124 bp
Locus ID:	23396
UniProt ID:	O60331
Cytogenetics:	19p13.3
Protein Families:	Druggable Genome

Protein Pathways:	Endocytosis, Fc gamma R-mediated phagocytosis, Focal adhesion, Inositol phosphate metabolism, Metabolic pathways, Phosphatidylinositol signaling system, Regulation of actin cytoskeleton
MW:	77.9 kDa
Gene Summary:	This locus encodes a type I phosphatidylinositol 4-phosphate 5-kinase. The encoded protein catalyzes phosphorylation of phosphatidylinositol 4-phosphate, producing phosphatidylinositol 4,5-bisphosphate. This enzyme is found at synapses and has been found to play roles in endocytosis and cell migration. Mutations at this locus have been associated with lethal congenital contractural syndrome. Alternatively spliced transcript variants encoding different isoforms have been described.[provided by RefSeq, Sep 2010]