

Product datasheet for **RG239359**

NFAT2 (NFATC1) (NM_001278675) Human Tagged ORF Clone

Product data:

Product Type:	Expression Plasmids
Product Name:	NFAT2 (NFATC1) (NM_001278675) Human Tagged ORF Clone
Tag:	TurboGFP
Symbol:	NFAT2
Synonyms:	NF-ATC; NF-ATc1.2; NFAT2; NFATc
Mammalian Cell Selection:	Neomycin
Vector:	pCMV6-AC-GFP (PS100010)
E. coli Selection:	Ampicillin (100 ug/mL)



[View online »](#)

**ORF Nucleotide
Sequence:**

>RG239359 representing NM_001278675.
 Blue=ORF Red=Cloning site Green=Tag(s)

```

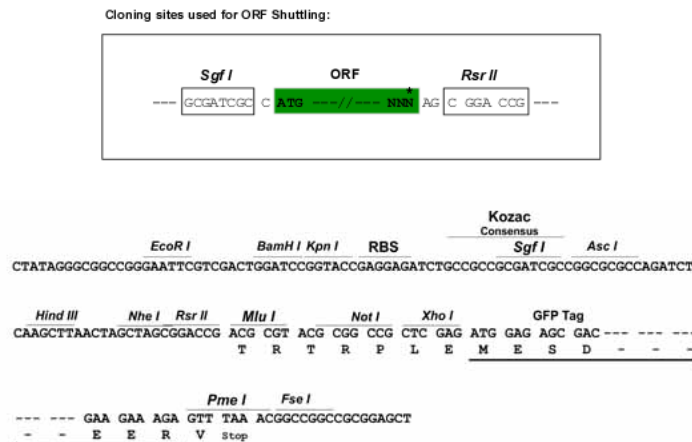
GCTCGTTTAGTGAACCGTCAGAATTTTGTAAACGACTCACTATAGGGCGGCCGGGAATTCGTGACTG
GATCCGGTACCGAGGAGATCTGCCGCCCGCATCGCC
ATGACGGGGCTGGAGGACCAGGAGTTCGACTTCGAGTTCCTCTTCGAGTTTAACCAGCGCAGCAGGGCC
CCCGCCGCGGCCGCCAGAACACTATGGCTATGCATCCTCCAAGTCAGCCCCGCCCTGCCGCTCCCC
ACGGCGCACTCCACCCTGCCGGCCCCGTGCCACAACCTTCAGACCTCCACACCGGCATCATCCCGCCG
GCGGATCACCCCTCGGGGTACGGAGCAGCTTTGGACGGTGGGCCCGGGGCTACTTCCTCTCCTCCGGC
CACACCAGGCCTGATGGGGCCCCTGCCCTGGAGAGTCTCGCATCGAGATAACCTCGTGCTTGGGCTG
TACCACAACAATAACCAGTTTTTCCACGATGTGGAGGTGGAAGACGTCTCCCTAGCTCCAAACGGTCC
CCCTCCACGGCCACGCTGAGTCTGCCAGCCTGGAGGCCACAGAGACCCCTCGTGCTGAGCCCGGCC
AGCAGCCTGTCTCCCGAGCTGCAACTCAGAGGCCTCCTCTACGAGTCCAACACTCGTACCCGTAC
GCGTCCCCCAGACGTGCCATGGCAGTCTCCCTGCGTGTCTCCAAGACCACGGACCCCGAGGAGGGC
TTTCCCCGCGGGCTGGGGCCTGCACACTGCTGGGTTCCCGCGGCACTCCCCCTCCACCTCGCCCCGC
GCCAGCGTCACTGAGGAGAGCTGGTGGGTGCCGCTCCTCCAGACCCGGTCCCCTTGCAACAAGAGG
AAGTACAGCCTCAACGGCCGGCAGCCGCCCTACTCACCCACCCTCGCCACGCGCTCCCCGCAGGGC
TCCCCGCGGGTACGCGTACCGACGACTCGTGGTTGGGCAACACCACCCAGTACACCAGCTCGGCCATC
GTGGCCGCATCAACGCGCTGACCACCGACAGCAGCCTGGACCTGGGAGATGGCGTCCCTGTCAAGTCC
CGAAGACCACCTGGAGCAGCCGCCCTCAGTGGCGCTCAAGGTGGAGCCCGTGGGGAGGACCTGGGC
AGCCCCCGCCCCGCGCACTTCGCGCCCAAGACTACTCTCTTTCCAGCACATCAGGAAGGGCGGC
TTCTGCGACCACTACCTGGCGGTGCCGAGCACCCTACCAGTGGGCGAAGCCCAAGCCCTGTCCCT
ACGTCTACATGAGCCCGACCTGCCCGCCCTGGACTGGCAGCTGCCGTCCCACTCAGGCCGATGAG
CTTCGGATTGAGGTGCAGCCCAAGTCCCACCACCGAGCCCACTACGAGACGGAGGCGAGCCGGGGGCC
GTGAAGCGTCCGCCGGAGGACACCCATCGTGCAGTGCATGGCTACTTGGAGAATGAGCCGTGATG
CTGCAGCTTTTCAATTGGGACGGCGGACGACCGCTGCTGCGCCCGCACGCCTTCTACCAGGTGCACGGC
ATCACAGGAAGACCGTGTCCACCACCGCCACGAGGCCATCCTCTCCAACACCAAGTCTGGAGATC
CCACTCTGCCGGAACAGCATGCGAGCCGTATTGACTGTGCCGGAATCCTGAAACTCAGAACTCC
GACATTGAACTTCGAAAGGAGAGACGGACATCGGGAGGAAGAACACACGGGTACGGCTGGTGTCCGC
GTTACGTCGCCAACCCAGCGGCCGACGCTGTCCCTGCAGGTGGCCTCAACCCCATCGAATGCTCC
CAGCGCTCAGCTCAGGAGCTGCCTTGGTGGAGAAGCAGAGCACGGACAGCTATCCGGTCTGGGGGGG
AAGAAGATGGTCTGTCTGGCCACAACCTCCTGCAGGACTCCAAGGTCATTTTCTGGAGAAAGCCCA
GATGGCCACCATGTCTGGGAGATGGAAGCGAAAACGACCGGGACCTGTGCAAGCCGAATTCCTGGTG
GTTGAGATCCCGCATTTTCGGAATCAGAGGATAACCAGCCCCGTTACGTCAGTTTCTACGCTGCAAC
GGGAAGAGAAAGCGAAGCCAGTACCAGCGTTTACCTACCTTCCCGCAACGGTAACGCCATCTTTCTA
ACCGTAAGCCGTGAACATGAGCGCGTGGGGTGCTTTTTT
AGCGGACCGACGCGTACGCGGCCGCTCGAG - GFP Tag - GTTAAAC
  
```

Protein Sequence: >Peptide sequence encoded by RG239359
 Blue=ORF Red=Cloning site Green=Tag(s)

MTGLEDQEFDFFFLFEFNQRDEGAAAAAPEHYGYASSNVSPALPLPTAHSTLPAPCHNLQTSTPGIIPP
 ADHPSGYGAALDGGPAGYFLSSGHTRPDGALESPIEITSCGLYHNNNQFFHDVEVEDVLPSSKRS
 PSTATLSLPSLEAYRDPSCSPASSLSSRSCNSEASSYESNYSYPYASPQTSWPQSPCVSPKTTDPEEG
 FPRGLGACTLLGSPRHSPSTSPRASVTEESWLGARSSRPASPCNKRYSLNGRQPPYSPHHSPTPSPHG
 SPRVSVTDDSWLGNTTQYTSSAIVAAINALTTDSSLDLGDGVPVKSRKTTLEQPPSVALKVEPVGEDLG
 SPPPPADFAPEDYSSFQHIRKGGFCQYLAVPQHPYQWAKPKPLSPTSYSMPTLPALDWQLPSHSGPYE
 LRIEVQPKSHHRAHYETEGSRGAVKASAGGHPIVQLHGYLENEPLMLQLFIGTADDRLLRPHAFYQVHR
 ITGKTVSTTSHEAILSNTKYLEIPLLPEMSRAVIDCAGILKLRNSDIELRKGETDIGRKNTRVRLVFR
 VHVPQPSGRTLSLQVASNPIECSQRSAQELPLVEKQSTDSYPVVGKKMVLSGHNFLQDSKVI FVEKAP
 DGHVWEMEAKTRDLCKPNSL VVEIPFRNQRITSPVHVSFYVCNGKRKRSQYQRFTYLPANGNAIFL
 TVSREHERVGCFF
 SGPTRTRPLEMESDESGLPAMEIECRITGTLNGVEFELVGGGEGTPEQGRMTNKMSTKGALTFSPYLL
 SHVMGYGFYHFGTYPSTYSGYENPFLHAINNGGYTNTRIEKYEDGGVLVHVSFYRYEAGRVIQDFKVMGTGF
 PEDSVIFTDKIIRSNTVEHLHPMGDNDLDGSFTRTFLRDGGYSSVVD SHMHFKSAIHPSILQNGGP
 MFAFRVEEDHSNTELGIVEYQHAFKTPDADAGEERV

Restriction Sites: SgfI-RsrII

Cloning Scheme:



ACCN: NM_001278675

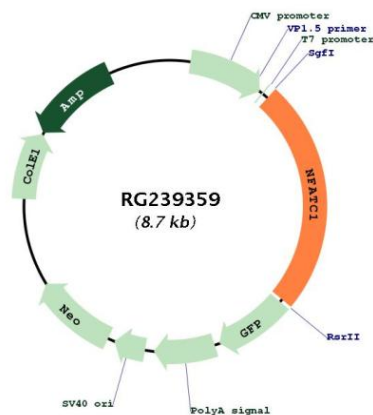
ORF Size: 2109 bp

OTI Disclaimer: The molecular sequence of this clone aligns with the gene accession number as a point of reference only. However, individual transcript sequences of the same gene can differ through naturally occurring variations (e.g. polymorphisms), each with its own valid existence. This clone is substantially in agreement with the reference, but a complete review of all prevailing variants is recommended prior to use. [More info](#)

OTI Annotation: This clone was engineered to express the complete ORF with an expression tag. Expression varies depending on the nature of the gene.

Components:	The ORF clone is ion-exchange column purified and shipped in a 2D barcoded Matrix tube containing 10ug of transfection-ready, dried plasmid DNA (reconstitute with 100 ul of water).
RefSeq:	NM_001278675.2
RefSeq Size:	2604 bp
RefSeq ORF:	2112 bp
Locus ID:	4772
UniProt ID:	O95644
Cytogenetics:	18q23
Protein Families:	Druggable Genome, Transcription Factors
Protein Pathways:	Axon guidance, B cell receptor signaling pathway, Natural killer cell mediated cytotoxicity, T cell receptor signaling pathway, VEGF signaling pathway, Wnt signaling pathway
MW:	77.3 kDa
Gene Summary:	The product of this gene is a component of the nuclear factor of activated T cells DNA-binding transcription complex. This complex consists of at least two components: a preexisting cytosolic component that translocates to the nucleus upon T cell receptor (TCR) stimulation, and an inducible nuclear component. Proteins belonging to this family of transcription factors play a central role in inducible gene transcription during immune response. The product of this gene is an inducible nuclear component. It functions as a major molecular target for the immunosuppressive drugs such as cyclosporin A. Multiple alternatively spliced transcript variants encoding distinct isoforms have been identified for this gene. Different isoforms of this protein may regulate inducible expression of different cytokine genes. [provided by RefSeq, Jul 2013]

Product images:



Circular map for RG239359