

Product datasheet for **RG239323**

BTK (NM_001287344) Human Tagged ORF Clone

Product data:

Product Type:	Expression Plasmids
Product Name:	BTK (NM_001287344) Human Tagged ORF Clone
Tag:	TurboGFP
Symbol:	BTK
Synonyms:	AGMX1; AT; ATK; BPK; IGHD3; IMD1; PSCTK1; XLA
Mammalian Cell Selection:	Neomycin
Vector:	pCMV6-AC-GFP (PS100010)
E. coli Selection:	Ampicillin (100 ug/mL)



[View online »](#)

**ORF Nucleotide
Sequence:**

>RG239323 representing NM_001287344.
 Blue=ORF Red=Cloning site Green=Tag(s)

```
GCTCGTTTAGTGAACCGTCAGAATTTTGTAAATACGACTCACTATAGGGCGGCCGGGAATTCGTGACTG
GATCCGGTACCGAGGAGATCTGCCGCCGCGATCGCC
ATGGCCAGTTGGTCCATTCAACAAATGGTTATTGGATGCCATTATGTGCGAGGCACTGTTCCGGGGGA
GAGCACACAGGTGAACCTCAGAAAAGAAGAAGCTATGGCCGCACTGATTCTGGAGAGCATCTTCTGAAG
CGATCCCAACAGAAAAAGAAAACATCACCTCTAAACTTCAAGAAGCGCCTGTTTCTTTGACCGTGAC
AAACTCTCTACTATGAGTATGACTTTGAACGTGGGAGAAGAGGCACTAAGAAGGTTCAATAGATGTT
GAGAAGATCACTTGTGTTGAAACAGTGGTTCCTGAAAAAATCCTCCTCCAGAAAGACAGATTCCGAGA
AGAGGTGAAGAGTCCAGTGAAATGGAGCAAATTTCAATCATTGAAAGTTCCCTTATCCCTTCCAGGTT
GTATATGATGAAGGGCTCTCTACGTCTTCTCCCAACTGAAGAACTAAGGAAGCGGTGGATTACCAG
CTCAAAAACGTAATCCGGTACAACAGTATCTGGTTCAGAAATATCACCTTGTCTTGGATCGATGGG
CAGTATCTCTGCTCTCAGACAGCCAAAAATGCTATGGGCTGCCAAATTTTGGAGAACAGGAATGGA
AGCTTAAAACCTGGGAGTTCTCACCGAAGACAAAAAGCCTTCCCCCAACGCCTGAGGAGGACCAG
ATCTTGAAAAAGCCACTACCGCCTGAGCCAGCAGCAGCACCAGTCTCCACAAGTGAGCTGAAAAAGGTT
GTGGCCCTTTATGATTACATGCCAATGAATGCAATGATCTACAGCTGCCGAAGGGTGATGAATTTTT
ATCTTGGAGGAAAGCAACTTACCATGGTGGAGAGCACGAGATAAAAAATGGGCAGGAAGGCTACATTCCT
AGTAACTATGTCACTGAAGCAGAAGACTCCATAGAAAATGTATGAGTGGTATTCCAAACACATGACTCGG
AGTCAGGCTGAGCAACTGCTAAAGCAAGAGGGGAAAGAAGGAGGTTTCATTGTGACAGACTCCAGCAA
GCTGGCAAATATACAGTGTCTGTGTTGCTAAATCCACAGGGGACCCTCAAGGGGTGATACGTATTAT
GTTGTGTGTTCCACACCTCAGAGCCAGTATTACCTGGCTGAGAAGCACCTTTTTCAGCACCATCCCTGAG
CTCATTAACTACCATCAGCACAACTCTGCAGGACTCATATCCAGGCTCAAATATCCAGTGTCTCAACAA
AACAAAGAATGCACCTTCCACTGCAGGCCTGGGATACGGATCATGGGAAATTGATCCAAAGGACCTGACC
TTCTTGAAGGAGCTGGGACTGGACAATTTGGGAGTGAAGTATGGGAAATGGAGAGGCCAGTACGAC
GTGGCCATCAAGATGATCAAAGAAGGCTCCATGTCTGAAGATGAATTCATTGAAGAAGCCAAAGTCATG
ATGAATCTTTCCCATGAGAAGCTGGTGCAGTTGTATGGCGTCTGCACCAAGCAGCGCCCCATCTTCATC
ATCACTGAGTACATGGCCAATGGCTGCCTCCTGAACTACCTGAGGGAGATGCGCCACCGCTTCCAGACT
CAGCAGCTGCTAGAGATGTCAAGGATGTCTGTGAAGCCATGGAATACCTGGAGTCAAAGCAGTTCCTT
CACCGAGACCTGGCAGCTCGAACTGTTTGGTAAACGATCAAGGAGTTGTTAAAGTATCTGATTTCCGC
CTGTCCAGGTATGCTCCTGGATGATGAATACACAAGCTCAGTAGGCTCAAATTTCCAGTCCGGTGGTCC
CCACCGAAGTCTGATGTATAGCAAGTTCAGCAGCAAATCTGACATTTGGGCTTTTGGGTTTTGATG
TGGGAAATTTACTCCCTGGGGAAGATGCCATATGAGAGATTTACTAACAGTGAGACTGCTGAACACATT
GCCCAAGGCTACGTCTCTACAGGCCTCATCTGGCTTCAGAGAAGGTATATACCATCATGTACAGTTGC
TGGCATGAGAAGCAGATGAGCGTCCCCTTTCAAATTTCTTCTGAGCAATATTCTAGATGTCATGGAT
GAAGAATCC
ACGCGTACGCGGCCGCTCGAG – GFP Tag – GTTAAAC
```

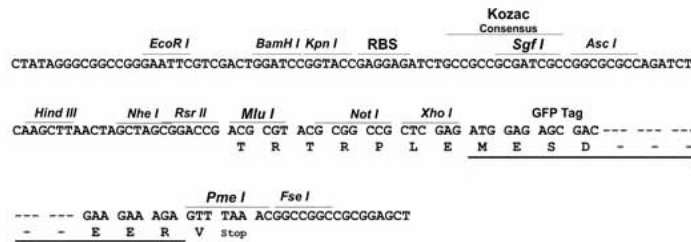
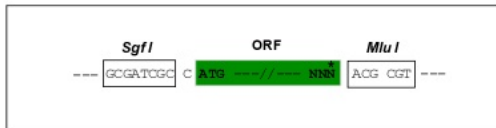
Protein Sequence: >Peptide sequence encoded by RG239323
 Blue=ORF Red=Cloning site Green=Tag(s)

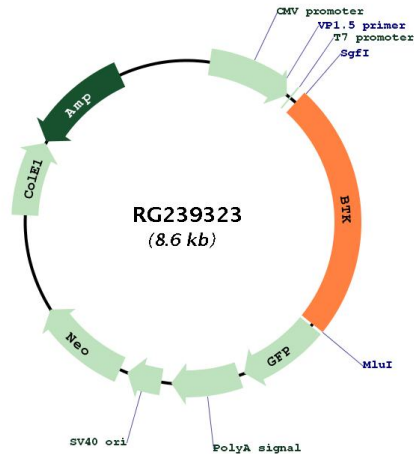
MASWSIQQMVIIGCPLCGRHCSGGEHTGELQKEEAMAAVILESIFLKRSQQKKTSPLNFKKRLFLLTVH
 KLSYYEYDFERGRRSKKGSIDVEKITCVETVPEKNPPPERQIPRRGEESSEMEQISIIERFPYFQV
 VYDEGPLVYFSPTEELRKRWIHQLNKVIKIRYNSDLVQKYHPCFWIDGQYLCCSQTAKNAMGCQILENRNG
 SLKPGSSHRKTKKPLPPTPEEDQILKKPLPPEPAAAPVSTSELKKVVALYDYMPMNANDLQLRKGDEYF
 ILEESNLPPWRARDKNGQEGYIPSNYVTEAEDSIEMYEWYSKHMTRSQAELLLKQEGKEGGFIVRDSK
 AGKYTVSVFAKSTGDPQGVIRHYVVCSTPQSQYYLAEKHLFSTIPELINYHQHNSAGLISRLKYPVSQQ
 NKNAPSTAGLGYGSWEIDPKDLTFLKELGTGQFVVKYKWRGQYDVAIKMIKEGSMSEDEFIEEAKVM
 MNL SHEKLVQLYGVCTKQRPIFIITEYMANGCLLNLYREMRHRFQTQQLLEMCKDVCEAMEYLESKQFL
 HRDLAARNCLVNDQGVKVSDFGLSRYVLDDEYTSVSGSKFPVRWSPPEVLMYSKFSSKSDIWAFGVLM
 WEIYSLGKMPYERFTNSEAEHIAQGLRLYRPHLASEKVYTIMYSCWHEKADERPTFKILLSNILDVMD
 EES
TRTRPLEMESDESGLPAMEIECRITGTLNGVEFELVGGEGTPEQGRMTNKMKSTKGALTFSPYLLSHV
 MGYGFYHFGTYPSTYENPFLHAINNGGYTNRIEKYEDGGVLHVSFSYRYEAGRVIGDFKVMGTGFPED
 SVIFTDKIIRSNAVEHLHPMGDNDLDGSFTRTFSLRDGGYSSVVD SHMHFKAISHPSILQNGGPMFA
 FRRVEEDHSNTELGIVEYQHAFKTPDADAGEERV

Restriction Sites: SgfI-MluI

Cloning Scheme:

Cloning sites used for ORF Shuttling:



Plasmid Map:


ACCN:	NM_001287344
ORF Size:	2079 bp
OTI Disclaimer:	The molecular sequence of this clone aligns with the gene accession number as a point of reference only. However, individual transcript sequences of the same gene can differ through naturally occurring variations (e.g. polymorphisms), each with its own valid existence. This clone is substantially in agreement with the reference, but a complete review of all prevailing variants is recommended prior to use. More info
OTI Annotation:	This clone was engineered to express the complete ORF with an expression tag. Expression varies depending on the nature of the gene.
Components:	The ORF clone is ion-exchange column purified and shipped in a 2D barcoded Matrix tube containing 10ug of transfection-ready, dried plasmid DNA (reconstitute with 100 ul of water).
RefSeq:	NM_001287344.1 , NP_001274273.1
RefSeq Size:	2767 bp
RefSeq ORF:	2082 bp
Locus ID:	695
UniProt ID:	Q06187
Cytogenetics:	Xq22.1
Protein Families:	Druggable Genome, Protein Kinase
Protein Pathways:	B cell receptor signaling pathway, Fc epsilon RI signaling pathway, Primary immunodeficiency
MW:	80.4 kDa

Gene Summary:

The protein encoded by this gene plays a crucial role in B-cell development. Mutations in this gene cause X-linked agammaglobulinemia type 1, which is an immunodeficiency characterized by the failure to produce mature B lymphocytes, and associated with a failure of Ig heavy chain rearrangement. Alternative splicing results in multiple transcript variants encoding different isoforms. [provided by RefSeq, Dec 2013]