

Product datasheet for **RG239322**

TAB2 (NM_001292034) Human Tagged ORF Clone

Product data:

Product Type:	Expression Plasmids
Product Name:	TAB2 (NM_001292034) Human Tagged ORF Clone
Tag:	TurboGFP
Symbol:	TAB2
Synonyms:	CHTD2; MAP3K7IP2; TAB-2
Mammalian Cell Selection:	Neomycin
Vector:	pCMV6-AC-GFP (PS100010)
E. coli Selection:	Ampicillin (100 ug/mL)



[View online »](#)

ORF Nucleotide Sequence:

>RG239322 representing NM_001292034.
 Blue=ORF Red=Cloning site Green=Tag(s)

```

GCTCGTTTAGTGAACCGTCAGAATTTTGTAAACGACTCACTATAGGGCGGCCGGGAATTCGTGACTG
GATCCGGTACCGAGGAGATCTGCCGCCCGGATCGCC
ATGGCCAAGGAAGCCACCAAATGATTTTCAGGTTTTACATGACCTGCGACAAAAATCCCTGAAGTA
CCTGAAGTTGTTGTATCCAGGTGCATGTTACAGAATAATAAACCTGGATGCCTGCTGTGCTGTTCTC
TCTCAGGAGAGTACAAGATATCTTTATGGTGAAGGAGACTTGAATTTTTTCAGATGATTCTGGAATTTCT
GGTCTACGCAATCACATGACTTCTCTCAACTTGGACTTGAATCACAGAACATTTACCACCATGGAAGA
GAAGGAAGTAGGATGAATGGAAGTAGGACTCTAACGCACAGCATTAGTGATGGACAACCTCAAGGTGGC
CAGTCCAATAGTGAACATTTTCAGCAGGAGCCACAGACAGCACCAGCTCAAGTTCCTCAAGGCTTTAAT
GTTTTTGGAAATGCCAGTTCCTCTGGTCTTCAAATTCAGCACCACATCTGGATTTCACTTAGGCAGC
AAAGGAACATCTAGCCTTTCTCAACAACTCCCAGATTTAATCCCATTATGGTAACCTTAGCCCCAAAT
ATCCAGACTGGTCGTAATACTCCTACATCTTGCACATACATGGTGTACCTCCACCTGTACTTAACAGT
CCACAGGAAATCTATCTATATTAGGCCCTTACATTACAACCTCCTGGTGGTACAACCTCGACAGACACAA
CAGCATTCTGGCTGGGTATCTCAGTTAATCCCATGAACCCTCAGCAAGTTTATCAGCCTTCACAGCCT
GGTCCCTGGACTACTTGTCTGCATCTAATCCTCTGTACATACCTCATCTCAACAGCCAAATCAGCAA
GGCCACCAGACCTCTCATGTCTACATGCCAATCAGTTCACCTACTACTTCAACACCACCAACCATTTCAT
TCATCTGGTAGCTCACAGTCTTCTGCCATAGCCAATAAACATTCAGAAATTTCAACAGGACCTCGA
AAAAACCAGATTGAAATCAAACCTGAACCCCCACAAAGAAATAATTCTTCAAACCTGCGTCTTCTGGA
CCTCGAACCTCCAGCACTTCTCTTTCAGTCAATAGCCAGACCTTAAACAGAAATCAGCCCACTGTTTAC
ATAGCTGCCAGCCCCCAAAATACGGATGAGCTGATGTCCCGTAGTCAACCTAAGGTCTATATTTACAGCG
AATGCTGCCACAGGAGATGAACAGGTCAATGCGGAATCAGCCACACTCTTCATATCCACAACCTGGA
GCATCTGCTGCCTCCAGGAACATGTCTGGCAAGTGAGCATGGTCTGCCTTTATTCATACCATCCT
CCCAAAAGTCGAGCAATAGGCAATAACTCTGCAACCTCTCCTCGAGTGGTAGTCACTCAGCCCAATACG
AAATACACTTTCAAAATACAGTCTCTCCAATAAGCCCCCTGCAGTTTACCAGGGGTGGTGTCCCT
ACCTTTGAACTTACAAATCTTCTTAATCATCCTGATCATTATGTAGAAACCGAGAATATTCAGCACCTC
ACGGACCCTACATTAGCACATGTGGATAGAATAAGTGAAACACGGAACTGAGTATGGGATCTGATGAT
GCTGCCTACACACAAGCTCTTTTGGTACACCAGAAGGCCAGAATGGAACGACTTCAAAGAGAACTTGAG
ATTCAAAGAAAAAGCTGGATAAATTAATCTGAGGTTAATGAAATGGAAAATAATCTAACTCGAAGG
CGCCTGAAAAGATCAAATCTATATCCAGATACCTTCCCTTGAAGAAATGCAGCAGCTGAGAAGTTGT
AATAGACAACCTCAGATTGACATTGACTGCTTAACCAAAGAAATGATCTTTTTCAAGCCCAGGACCA
CATTTTAAACCCAGCGCTATTCACTAATTTTATGACAATATTGGATTTGTAGGTCCTGTGCCACAAAA
CCCAAAGATCAAAGGTCCATCATCAAAACACCAAAGACTCAAGACACAGAAGATGATGAGGGAGCTCAG
TGGAAATGTACCGCTGTACTTTTTGAACCATCCAGCCTTAATTCGCTGTGAACAGTGTGAGATGCCA
AGGCATTTACGCGTACGCGGCCGCTCGAG - GFP Tag - GTTAAAC
  
```

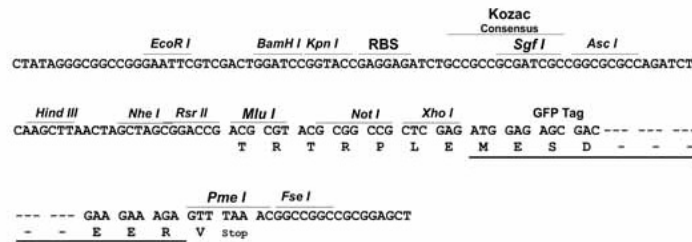
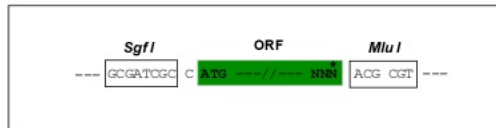
Protein Sequence: >Peptide sequence encoded by RG239322
 Blue=ORF Red=Cloning site Green=Tag(s)

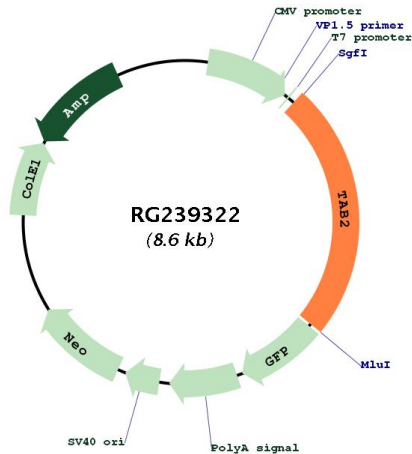
MAQGS HQIDFQVLHDLRQKFPEVPEVVVSRCLQNNNNLDACCAVL SQESTRYLYGEGDLNFSDDSGIS
 GLRNHMTSLNLDLQSQNIYHHGREGRMNGSRTLTHSISDGLQGGQSNSELFQQEPQTAQAQVPQGFN
 VFGMSSSSGASNSAPHLGFHLGSKGTSSL SQQTPRFNPIMVTLAPNIQTGRNTP TSLHIHGVP PVLNS
 PQGNSIYIRPYITTPGGTTRQTQQHSGWVSQFNPMNPQQVYQPSQPGPWTTCPASNPLSHTSSQQPNQQ
 GHQTS HVYMPISSPTTSQPPTIHS SSSQSSAHSQYNIQNI STGPRKNQIEIKLEPPQRNNSKLRSSG
 PRTSSTSSVNSQTLNRNQPTVYIAASPPNTDELMSRSQPKVYISANAATGDEQVMRNQPTLFI STNSG
 ASAASRNMSGQVSMGPAF IHHHPKSR AIGNNSATSPRVVVTQPNTKYTFKITVSPNKPPAVSPGVVSP
 TFE LTNLLNHPDHVYETENIQHL TDPTLAHVDR ISETRKLSMGSDDAAYTQALLVHQKARMERLQRELE
 IQKKKLDK LKSEVNEMENNL TRRLKRSNSISQIPSL EEMQQLRSCNRQLQIDIDCLTKEIDL FQARGP
 HFNP SAIHNFYDNI GFVGPVPPKPKDQRSI IKTPKTQDTEDEGAQWNCTACTFLNHPALIRCEQCEMP
 RHF
 TRTRPLEMESDESGLPAMEIECRITGTLNGVEFELVGGEGTPEQGRMTNKMKSTKGALTFSPYLLSHV
 MGYGFYHFGTYP SGYENPFLHAINNGGYTNTRIEKYEDGGVLHVFSYRYEAGRVIGDFKVMGTGFPEP
 SVIFTDKIIRS NATVEHLHPMGDNDLDGSFTRTFLRDGGYSSVVD SHMHFKSAIHP SILQNGGPMFA
 FRRVEEDHSNTELGIVEYQHAFKTPDADAGEERV

Restriction Sites: SgfI-MluI

Cloning Scheme:

Cloning sites used for ORF Shuttling:



Plasmid Map:


ACCN: NM_001292034

ORF Size: 2079 bp

OTI Disclaimer: Due to the inherent nature of this plasmid, standard methods to replicate additional amounts of DNA in *E. coli* are highly likely to result in mutations and/or rearrangements. Therefore, OriGene does not guarantee the capability to replicate this plasmid DNA. Additional amounts of DNA can be purchased from OriGene with batch-specific, full-sequence verification at a reduced cost. Please contact our customer care team at custsupport@origene.com or by calling 301.340.3188 option 3 for pricing and delivery.

The molecular sequence of this clone aligns with the gene accession number as a point of reference only. However, individual transcript sequences of the same gene can differ through naturally occurring variations (e.g. polymorphisms), each with its own valid existence. This clone is substantially in agreement with the reference, but a complete review of all prevailing variants is recommended prior to use. [More info](#)

OTI Annotation: This clone was engineered to express the complete ORF with an expression tag. Expression varies depending on the nature of the gene.

Components: The ORF clone is ion-exchange column purified and shipped in a 2D barcoded Matrix tube containing 10ug of transfection-ready, dried plasmid DNA (reconstitute with 100 ul of water).

RefSeq: [NM_001292034.3](#)

RefSeq Size: 4171 bp

RefSeq ORF: 2082 bp

Locus ID:	23118
UniProt ID:	Q9NYJ8
Cytogenetics:	6q25.1
Protein Families:	Druggable Genome
Protein Pathways:	MAPK signaling pathway, NOD-like receptor signaling pathway, Toll-like receptor signaling pathway
MW:	76.9 kDa
Gene Summary:	<p>The protein encoded by this gene is an activator of MAP3K7/TAK1, which is required for for the IL-1 induced activation of nuclear factor kappaB and MAPK8/JNK. This protein forms a kinase complex with TRAF6, MAP3K7 and TAB1, and it thus serves as an adaptor that links MAP3K7 and TRAF6. This protein, along with TAB1 and MAP3K7, also participates in the signal transduction induced by TNFSF11/RANKI through the activation of the receptor activator of NF-kappaB (TNFRSF11A/RANK), which may regulate the development and function of osteoclasts. Studies of the related mouse protein indicate that it functions to protect against liver damage caused by chemical stressors. Mutations in this gene cause congenital heart defects, multiple types, 2 (CHTD2). Alternative splicing results in multiple transcript variants. [provided by RefSeq, May 2014]</p>