

Product datasheet for **RG239320**

PRMT7 (NM_001290018) Human Tagged ORF Clone

Product data:

Product Type:	Expression Plasmids
Product Name:	PRMT7 (NM_001290018) Human Tagged ORF Clone
Tag:	TurboGFP
Symbol:	PRMT7
Synonyms:	SBIDDS
Mammalian Cell Selection:	Neomycin
Vector:	pCMV6-AC-GFP (PS100010)
E. coli Selection:	Ampicillin (100 ug/mL)



[View online »](#)

ORF Nucleotide
Sequence:

>RG239320 representing NM_001290018.
Blue=ORF Red=Cloning site Green=Tag(s)

```
GCTCGTTTAGTGAACCGTCAGAATTTTGTAAACGACTCACTATAGGGCGGCCGGGAATTCGTGACTG
GATCCGGTACCGAGGAGATCTGCCGCCCGCATCGCC
ATGAAGATCTTCTGCAGTCGGGCCAATCCGACCACGGGGTCTGTGGAGTGGCTGGAGGAGGATGAACAC
TATGATTACCACCAGGAGATTGCAAGTCACTTATGCAGATATGCTACATGACAAAGACAGAAATGTA
AAATACTACCAAGGTATCCGGGCTGCCGTGAGCAGGGTGAAGGACAGAGGACAGAAGGCCTTGGTTCTC
GACATTGGCACTGGCACGGGACTCTTGTCAATGATGGCGTCCACAGCAGGTGCCGACTTCTGCTATGCC
ATCGAGGTTTTCAAGCCTATGGCTGATGCTGCTGTGAAGATTGTGGAGAAAAATGGCTTTAGTGATAAG
ATTAAGTTATCAACAAGCATTCCACCGAGGTGACTGTAGGTCCAGAGGGTGACATGCCATGCCGTGCC
AACATCCTGGTCACAGAGTTGTTTGACACAGAGCTGATCGGGAGGGGGCGCTGCCCTCCTATGAGCAC
GCACACAGGCATCTCGTGGAGGAAAATTTGAGGCCGTGCCACAGAGCCACCGTCTATGCACAGCTG
GTGGAGTCGGGAGGATGTGGTGTGGAACAAGCTATTTCCCATCCAGTGCAGACCAGCCTCGGAGAG
CAGGTCATCGTCCCTCCGTTGACGTGGAGAGCTGCCCTGGCGCACCCCTGTCTGTGACATTCAGCTG
AACCAGGTGTACCAGCCGACTTACAGTCCCTACGCGATGTGCTGCCATGTTTCAGCATAGACTTACGC
AAGCAAGTCAGTAGCTCAGCAGCCTGCCATAGCAGGCGGTTTGAACCTCTGACATCTGGCCGAGCTCAG
GTGTTTCTCTCGTGGTGGACATTGAAATGGACCTGAGGGGAAGATCAAGTGCACCATGGCCCCCTTC
TGGGCACACTCAGACCCAGAGGAGATGCAGTGGCGGGACCACTGGATGCAGTGTGTGACTTCTGCCA
CAAGAGGAGCCTGTGGTGCAGGGCTCAGCGCTCTATCTGGTAGCCACCACGATGACTACTGCGTATGG
TACAGCCTGCAGAGGACCAGCCCTGAAAAGAATGAGAGAGTCCGCCAGATGCGCCCCGTGTGTGACTGC
CAGGCTCACCTGCTCTGGAACCGCCCTCGTGGAGAGATCAATGACCAGGACAGAAGTATCGATAC
TCCGTGTGCCCCATCACCTGGGGTGGAGCAGGTGTTTACAGTCGAGAGTTTCAGCAGCTTCTCACAAA
CTGTTGAGAAAAATCTTCAAGGCTAACCCTTGGAAAGATAAAAATTAACATCATAGAGAAACGGCCGAA
TTATTAACAAATGAGGACCTACAGGGCAGAAAGGTCTCTCTCCTCCTGGGCGAGCCGTTCTTCACTACC
AGCCTGTGCCGTGGCACAACCTCTACTTCTGGTACGTGCGGACCCTGTGGACCAGCACCTGGGGCCA
GGTGCCATGGTGTGCCCCAGGCAGCCTCGCTGCACGCTGTGGTGTGGAGTTCAGGGACCTGTGGCGG
ATCCGGAGCCCCGTGGTACTGCGAAGGCTTCGACGTGCACATCATGGACGACATGATTAAGCGTGCC
CTGGACTTCAGGGAGAGCAGGGAAGCTGAGCCCCACCCGCTGTGGGAGTACCCATGCCGCAGCCTCTCC
GAGCCCTGGCAGATCCTGACCTTTGACTTCCAGCAGCCGGTGCCCTGCAGCCCCGTGTGCGGAGGGC
ACCGTGGAGCTCAGAAGGCCCGGCAGAGCCACGACGCGGTGCTATGGATGGAGTACCACCTGACCCCG
GAGTGCACGCTCAGCACTGGCCTCCTGGAGCCTGCAGACCCCGAGGGGGGCTGCTGCTGGAACCCCCAC
TGCAAGCAGGCCCTACTTCTTTCAGCCCTGCCCCAGATCCCAGAGCACTGCTGGGTGGCCACGGACT
GTCAGTATGCAGTGGAGTTTACCCCCGACACAGGCGACATCATGGAGTTCAGGCATGCAGATACC
CCAGAC
ACGCGTACGCGGCCGCTCGAG - GFP Tag - GTTAAAC
```

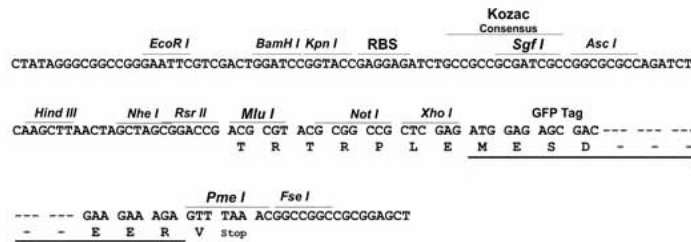
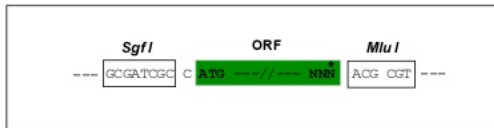
Protein Sequence: >Peptide sequence encoded by RG239320
 Blue=ORF Red=Cloning site Green=Tag(s)

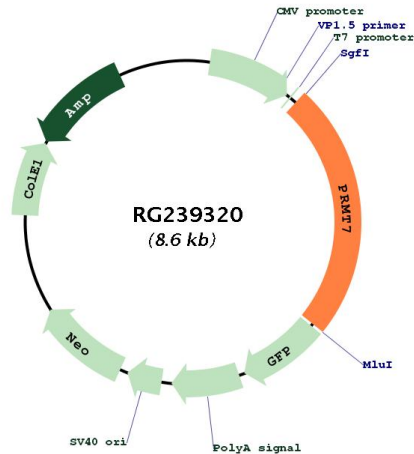
MKIFCSRANPTTGSVEWLEEDHYDHYQEIARSSYADMLHDKDRNVKYYQGIRAAVSRVKDRGQKALVL
 DIGTGTGLLSMMAVTAGADFCYAIIEVFKPMADA AVKIVEKNGFSDKIKVINKHSTEVTVGPEGDMPCRA
 NILVTELFDETELIGEGALPSYEHHRHLVEENCEAVPHRATVYAQLVESGRMWSWNKLFPIHVQTSLGE
 QVIVPPVDVESC PGAPSVCDIQLNQVSPADFTVLSVLPMSIDFSKQVSSAACHSRRFEPLTSGRAQ
 VVLSWWDIEMDPEGKIKCTMAPFWAHS DPEEMQWRDHWMCVYFLPQEEPVVQGSALYLVAHDDYCVW
 YSLQRTSPEKNERVRQMRPVCD CQAHL L WNRPRFGEINDQDRTD RYVQALRTVLKPDSVCLCVSDGSL
 SVLAHHLGVEQVFTVESSAASHKLLRKIFKANHLEDKINIIEKRPELLTNE DLQGRKVSLLLGE PFFTT
 SLLPWHNL YFWYVRTAVDQHLGPGAMVMPQAASLHAVVVEFRDLWRIRSPCGDCEGFDVHIMDDMIKRA
 LDFRESREAPHPLWEYPCRS LSEPWQILTFDFQQPVPLQPLCAEGTVELRRPGQSHA AVLWMEYH LTP
 ECTLSTGLLEPADPEGGCCWNP HCKQAVYFFSPAPDPRALLGGPRTVSYAVEFH PTDGDIIMEFRHADT
 PD
 TRTRPLEMESDESGLPAMEIECRITGTLNGVEFELVGGGEGTPEQGRMTNKMKSTKGALTFSPYLLSHV
 MGYGFYHFGTYP SGYENPFLHAINNGGYTNRIEKYEDGGVLHVSFSYRYEAGRVIGDFKVMGTGFPE
 SVIFTDKIIRS NATVEHLHPMGDNDLDGSFTRTFLRDGGYSSVVD SHMHFKSAIHP SILQNGGPMFA
 FRRVEEDHSNTELGIVEYQHAFKTPDADAGEERV

Restriction Sites: SgfI-MluI

Cloning Scheme:

Cloning sites used for ORF Shuttling:



Plasmid Map:


ACCN:	NM_001290018
ORF Size:	2076 bp
OTI Disclaimer:	The molecular sequence of this clone aligns with the gene accession number as a point of reference only. However, individual transcript sequences of the same gene can differ through naturally occurring variations (e.g. polymorphisms), each with its own valid existence. This clone is substantially in agreement with the reference, but a complete review of all prevailing variants is recommended prior to use. More info
OTI Annotation:	This clone was engineered to express the complete ORF with an expression tag. Expression varies depending on the nature of the gene.
Components:	The ORF clone is ion-exchange column purified and shipped in a 2D barcoded Matrix tube containing 10ug of transfection-ready, dried plasmid DNA (reconstitute with 100 ul of water).
RefSeq:	NM_001290018.1 , NP_001276947.1
RefSeq Size:	2984 bp
RefSeq ORF:	2079 bp
Locus ID:	54496
UniProt ID:	Q9NVM4
Cytogenetics:	16q22.1
Protein Families:	Druggable Genome
MW:	78.9 kDa

Gene Summary:

This gene encodes a member of the protein arginine N-methyltransferase family of proteins. The encoded enzyme transfers single methyl groups to arginine residues to generate monomethylarginines on histone proteins as well as other protein substrates. This enzyme plays a role in a wide range of biological processes, including neuronal differentiation, male germ line imprinting, small nuclear ribonucleoprotein biogenesis, and regulation of the Wnt signaling pathway. Mutations in this gene underlie multiple related syndromes in human patients characterized by intellectual disability, short stature and other features. The encoded protein may promote breast cancer cell invasion and metastasis in human patients. [provided by RefSeq, May 2017]