

## Product datasheet for **RG239316**

### **SLC39A12 (NM\_001282733) Human Tagged ORF Clone**

#### **Product data:**

Product Type:	Expression Plasmids
Product Name:	SLC39A12 (NM_001282733) Human Tagged ORF Clone
Tag:	TurboGFP
Symbol:	SLC39A12
Synonyms:	bA570F3.1; LZT-Hs8; ZIP-12
Mammalian Cell Selection:	Neomycin
Vector:	pCMV6-AC-GFP (PS100010)
E. coli Selection:	Ampicillin (100 ug/mL)



[View online »](#)

ORF Nucleotide  
Sequence:

>RG239316 representing NM\_001282733.  
Blue=ORF Red=Cloning site Green=Tag(s)

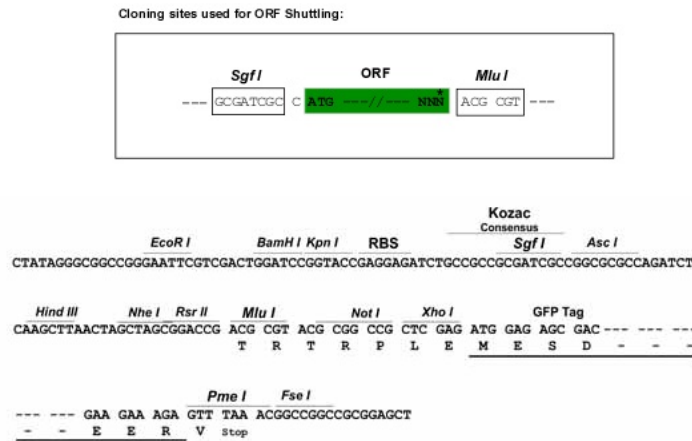
```
GCTCGTTTAGTGAACCGTCAGAATTTTGTAAACGACTCACTATAGGGCGGCCGGGAATTCGTGCGACTG
GATCCGGTACCGAGGAGATCTGCCGCCACGATCGCC
ATGTGCTTCCGGACAAAGCTCTCAGTATCCTGGTGCCATTGTTTCTTCTACTCAGCCGTGTTTTTCT
ACTGAGACAGACAAACCCTCAGCCAGGATAGCAGAAGCCGTGGGAGTTCAGGCCAACCGCAGACCTG
CTACAGGTTCTCTGCTGGTGACCACCCACCCACAACCACTCAAGAAGCCTCATCAAAACATTGTTG
GAGAAAACGGGTGCCACGGAGGAGAAACGGAATGCAAGGAGATTGCAATCTGTGCTTTGAACAGAT
GCACTATTACTAATAGCTGGAGGAAATTTGAAGATCAGCTTAGAGAAGAAGTGGTCCAGAGAGTTTCT
CTTCTCCTTCTATTACATTATTCATCAGGAAGAGATCTGTTCTTCAAAGCTCAACATGAGTAATAAA
GAGTATAAATTTACCTACACAGCCTACTGAGCCTCAGGCAGGATGAAGATTCTCTTTCCCTTCCACAG
AATGAGACAGAAGATATCTTGGCTTCCACAGGCAGTACTTTGACACTTCTCAAAGCCAGTGTATGGAA
ACCAAAACGCTGCAGAAAAATCTGGAATAGTGAGCAGTGAAGGTGCTAATGAAAGTACGCTTCCCTCAG
TTGGCAGCCATGATCATTACTTTGTCCCTCCAGGGTGTGTCTGGGACAAGGAAACTTGCCTTCCCA
GACTACTTTACAGAATATATTTTCAGTTCCTTGAATCGTACGAATACCCTCCGCCTATCAGAAGTAGAC
CAACTCCTCAACACTCTCTGGACCAGAAGTACTTGTATCAAAAATGAGAAAAATCCATCAATTTCAAAGG
AAACAAAACAACATAATAACCCATGATCAGGACTATTCTAATTTCTTTCATCCATGGAAAAAGAGTCT
GAGGATGGTCCAGTTTCTGGGATCAGACCTGCTTCTGCTAGGCAGCTGGTGGAGATATTTCTACAG
AAGGGCTCTCACTCATTCTAAGGAGGACTTTAAGCAAATGAGTCCAGGGATCATCCAGCAGCTCCTC
AGCTGCTCCTGCCACTTACCAAGGACCAACAAGCAAAGCTGCCACCTACCACTCTGGAGAAATACGGC
TACAGCACGGTGGCTGTACCCCTTCTCACACTGGGCTCCATGCTGGGACAGCGCTGGTCTTTTCCAT
AGCTGTGAGGAGAACTACAGGCTTATCTTACAGCTGTTTGTGGGCTTGGCCGTGGGACACTGTCTGGG
GACGCTCTGCTCCACCTTATCCCTCAGGTTCTTGGTTTACATAAGCAGGAAGCCCCAGAATTTGGGCAT
TTCCATGAAAGCAAAGGTCATATTTGAAAATGATGGGATTAATTGGAGGCATCCATGGATTTTTCTTG
ATAGAAAAATGTTTTATTCTTCTGTATCACCAAATGACAAGGCCTGTCTTGGTTAATGGGCACGTG
GGTCATTTCCACCATCTTGCACCTCAACTCTGAATTAAGTGACCAGGCAGGCAGAGGCAAATCTGTTCA
ACTATCCAGTTGAAAAGCCAGAAGATTACAGGCAGCTGAAATGCCTATAGGCAGTATGACAGCCTCC
AACAGAAAATGTAAGCCATTAGCTTGTAGCAATCATGATTCTGGTTGGGACAGCCTGCATAATTTT
GCAGATGGCCTAGCCATAGGAGCAGCCTTCTCATCATCATCCGAGTCAGGAGTGACCACTACGATTGCT
ATCTTGTGTCATGAAATCCACATGAAATGGGAGACTTTGCCGTGCTCTTAAGCTCTGGACTTTCTATG
AAGACTGCCATCCTGATGAATTTATAAGCTCCCTAACTGCCTCATGGGATTATACATTGGCCTTTCC
GTGTCAGCTGATCCATGTGTTCAAGACTGGATCTTACAGTCACTGCTGGGATGTTCTTATATTTATCC
TTGTTGAAATGCTTCTGAAATGACTCATGTTCAAACACAACGACCCTGGATGATGTTTCTCTGCAA
AACTTTGGATTGATCCTAGGTTGGCTTTCTCTCTGCTTTGGCTATATATGAGCAAAAATATTAATAA
ACGCGTACGCGGCCGCTCGAG – GFP Tag – GTTTAAAC
```

**Protein Sequence:** >Peptide sequence encoded by RG239316  
 Blue=ORF Red=Cloning site Green=Tag(s)

MCFRTKLSVSWVPLFLLLSRVFSTETDKPSAQDSRSRSGSQPADLLQVLSAGDHPHNHSRSLIKTLL  
 EKTGCPRRRNGMQGDCNLCFEPDALLIAGGNFEDQLREEVVQRVSLLLLYIIHQEEICSSKLNMSNK  
 EYKFYLHSLLSLRQDESSFLSQNETEDILAFTRQYFDTSSQCMETKTLQKKSIGVSSEGANESTLPQ  
 LAAMIITLSLQGVCLGQGNLPSDPYFTEYIFSSLNRTNTRLRLSELDQLLNTLWTRSTCIKNEKIHFQR  
 KQNNIIITHDQDYSNFSSSMEKESEDGPVSWDQTCFSARQLVEIFLQKGLSLISKEDFKQMSPGIIQQL  
 SCSCHLPKDQQAKLPTTLEKYGYSTVAVTLLTLGSMGTALVLFHSCEENYRLILQLFVGLAVGTLG  
 DALLHLIPQVGLHKQEAPEFGHFHESKGHIWKLMLGIGGIHGFFLIEKCFILLVSPNDKGLSLVNGHV  
 GHSHLLALNSELSDQAGRGKSASTIQLKSPEDSQAAMPISMTASNRKCKAISLLAIMILVGDLSLHNF  
 ADGLAIGAAFSSSESGVTTTIIALCHEIPHEMGDFAVLLSSGLSMKTAILMNFISLTAFMGLYIGLS  
 VSADPCVQDWIFVTAGMFLYLSLVEMLPEMTHVQTQRPWMMFLQNFGLILGWLSSLLLAIEYQNIKI  
**TRTRPLEMESDESGLPAMEIECRITGTLNGVEFELVGGEGTPEQGRMTNKMKSTKGALTFSPYLLSHV**  
**MGYGFYHFGTYPSTYENPFLHAINNGGYTNTRIEKYEDGGVLHVSFSYRYEAGRVIGDFKVMGTGFPED**  
**SVIFTDKIIRSNATVEHLHPMGDNDLDGSFTRTFLRDGGYYSSVVDSHMHFKSAIHPSILQNGGPMFA**  
**FRRVEEDHSNTELGIVEYQHAFKTPDADAGEERV**

**Restriction Sites:** SgfI-MluI

**Cloning Scheme:**



**ACCN:** NM\_001282733

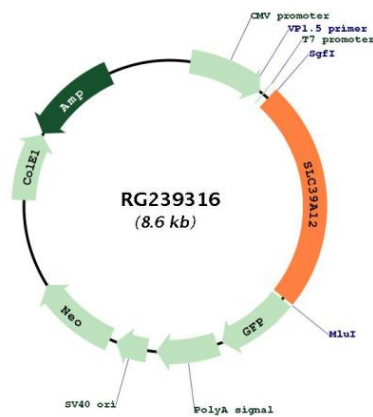
**ORF Size:** 2070 bp

**OTI Disclaimer:** The molecular sequence of this clone aligns with the gene accession number as a point of reference only. However, individual transcript sequences of the same gene can differ through naturally occurring variations (e.g. polymorphisms), each with its own valid existence. This clone is substantially in agreement with the reference, but a complete review of all prevailing variants is recommended prior to use. [More info](#)

**OTI Annotation:** This clone was engineered to express the complete ORF with an expression tag. Expression varies depending on the nature of the gene.

<b>Components:</b>	The ORF clone is ion-exchange column purified and shipped in a 2D barcoded Matrix tube containing 10ug of transfection-ready, dried plasmid DNA (reconstitute with 100 ul of water).
<b>RefSeq:</b>	<u>NM_001282733.1, NP_001269662.1</u>
<b>RefSeq Size:</b>	2805 bp
<b>RefSeq ORF:</b>	2073 bp
<b>Locus ID:</b>	221074
<b>UniProt ID:</b>	<u>Q504Y0</u>
<b>Cytogenetics:</b>	10p12.33
<b>Protein Families:</b>	Transmembrane
<b>MW:</b>	77 kDa
<b>Gene Summary:</b>	Zinc is an essential cofactor for hundreds of enzymes. It is involved in protein, nucleic acid, carbohydrate, and lipid metabolism, as well as in the control of gene transcription, growth, development, and differentiation. SLC39A12 belongs to a subfamily of proteins that show structural characteristics of zinc transporters (Taylor and Nicholson, 2003 [PubMed 12659941]).[supplied by OMIM, Aug 2008]

**Product images:**



Circular map for RG239316