

## Product datasheet for **RG239311**

### USP49 (NM\_001286554) Human Tagged ORF Clone

#### Product data:

Product Type:	Expression Plasmids
Product Name:	USP49 (NM_001286554) Human Tagged ORF Clone
Tag:	TurboGFP
Symbol:	USP49
Mammalian Cell Selection:	Neomycin
Vector:	pCMV6-AC-GFP (PS100010)
E. coli Selection:	Ampicillin (100 ug/mL)



[View online »](#)

**ORF Nucleotide Sequence:**

>RG239311 representing NM\_001286554.  
 Blue=ORF Red=Cloning site Green=Tag(s)

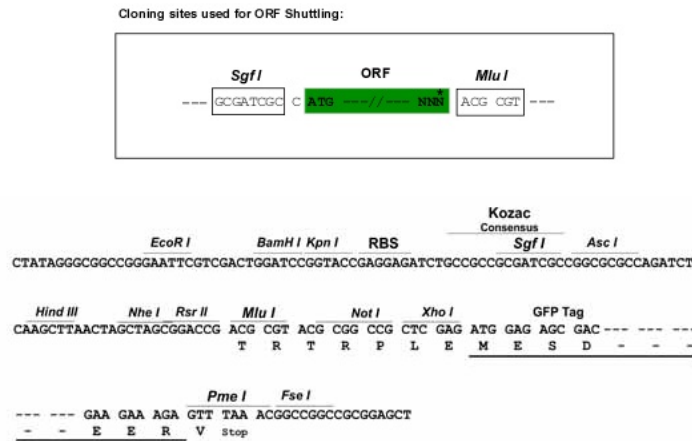
```
GCTCGTTTAGTGAACCGTCAGAATTTTGTAAACGACTCACTATAGGGCGGCCGGGAATTCGTGACTG
GATCCGGTACCGAGGAGATCTGCCGCCCGGATCGCC
ATGGATAGATGCAAACATGTAGGGCGGTTACGGCTCGCCAGGACCCTCCATCCTGAACCCTCAGAAG
TGGTGTCTTAGAGTGTGCCACCACCGAGTCCGTGTGGGCTGCCTCAAGTGCTCCACGTGGCCTGC
GGCCGCTATATTGAGACCACGCCCTGAAACACTTTGAGGAGACGGGACACCCGCTAGCCATGGAAGTC
CGGATCTCTACGTGTTCTGTTACCTGTGCAAGGACTACGTGCTCAATGATAACCCAGAGGGGGACCTG
AAGCTGTAAAGAAGTCCCTCCTGGCGGTCCGGGGCCAGAAACAGGACACGCCGGTGAAGCGTGGGCGG
ACGCTGCGGTCCATGGCTTCGGGTGAGGACGTGGTCTGCCGACGCGCTCCTCAGGGACAGCCGAG
ATGCTCACGGCTCTGTGGTACCGCGCTCAGCGCTGCTGGCCAGGACGCTGCGGCTGTGGTTCGAGAAG
AGCTCCCGGGGCCAGGCAAGCTGGAGCAGCGCGGCAGGAGGAGCCCTGGAGCGCAAGAAGGAGGAG
GCGCGGAGGCGGGCGCGAGGTAAACGGCGGCTGCTGGAGGAGCTGGCCAGCACCCCTCCGCGCAAG
AGTGCACGGCTGCTCCTGCACACGCCCCGCGACGCGGGCCGGCTGCCTCGCGCCCCGCCCTCCCT
ACCTCACGCAGAGTGCCCGCCGACACATCAAGCTGCGTGCAGCCGGCCATGGCCCCAGGCGTACG
GGCTGCGCAACCTGGGCAACACCTGCTACATGAACTCCATCCTCCAGGTGCTCAGCCACCTCCAGAAG
TTCGAGAATGTTTCTCAACCTTGACCCTTCCAAAACGGAACATCTGTTTCCAAAAGCCACCAACGGG
AAGACTCAGTTTCTGGCAAGCCAACCAACAGCTCGGCCACGGAGCTGTCTTGAGAAATGACAGGGCC
GAGGCATGCGAGCGGGAGGGCTTCTGCTGGAACGGCAGGGCTCCATTAGTCGGAGTCTGGAGCTCATC
CAGAACAAGGAGCCGAGTTCAAAGCACATTTCCCTCTGCCGTGAAGTGCACACCCCTTCCGAGTCATG
TGGTCCGGGAAGTGGGCCCTAGTGTGCCCTTCGCCATGCTCCACTCAGTGTGGAGCCTGATCCCTGCC
TTCCGCGGCTACGACCAACAGGACGCGCAGGAATTTCTCTGCGAGCTGCTGCACAAGGTGCAGCAGGAA
CTCGAGTCTGAGGCAACACACGCGGATCCTCATCCCTTCTCCAGAGGAAGTCAACCAACAGGTC
TTAAAGTGTGAATACCATATTTTCATGGGACGCTGCTCAGTCAGGTACATGTATATCATGCAATTAC
AAATCCAATACCATTTAGCCCTTTTGGGACCTATCCCTGGAATTCCTGAACGCTATCACTGCATAGAA
AAGGGTTTGTCCCTTTGAATCAAACAGAGTGTGCTCACTGAGATGCTGGCCAAATTCACAGAGACA
GAGGCCCTGGAAGGAGAATCTACGTTGTGACCAGTGTAAACAGCAAACGACGAAATCCAATCCAAA
CCCCTTGTCTGAGTGAAGCTAGAAAGCAGTTAATGATCTACAGACTACCTCAGGTTCTCCGGCTGCAC
CTTAAAAGATTCAGTGGTCTGGCCGTAATCATCGAGAGAAGATTGGGGTCCATGTCGTCTTTGACCAG
GTATTAACCATGGAACCTTACTGCTGCAGGACATGCTCTCCTCTTTGACAAAGAGACCTTTGCCTAT
GATCTCTCCGAGTGGTATGCATCACGGGAAAGGGTTTGGCTCAGGACACTACACAGCCTATTGCTAC
AACACAGAGGGAGGTTTTTGGGTCCACTGCAATGACTCAAAGCTGAATGTATGCAGTGTGAGGAAGTG
TGCAAAACCCAGGCTACATCCTTTTTTAACTCAAAGAACAGTGCAGGGCAATGCAAGAATCTCAGAA
ACCCATCTCCAAGCTCAGGTGCAGTCCAGCAACAATGATGAAGGCAGACCACAGACATTTTCC
ACGCGTACGCGGCCGCTCGAG – GFP Tag – GTTTAAAC
```

**Protein Sequence:** >Peptide sequence encoded by RG239311  
 Blue=ORF Red=Cloning site Green=Tag(s)

MDRCKHVGRLRLAQDHSILNPQKWCCLECATTESVWACLKCSHVACGRYIEDHALKHFEETGHPLAMEV  
 RDLVYFCYLCKDYVLNDNPEGLKLLRSSLLAVRGQKQDTPVRRGRTLRSMASGEDVVLQQRAPQGGQPQ  
 MLTALWYRRQRLARTLRLWFEKSSRGQAKLEQRRQEEALERKKEEARRRRREVKRRLLEELASTPPRK  
 SARLLLHTPRDAGPAASRPAALPTSRVPAATLKLRRQPAMAPGVTGLRNLGNTCYMNSILQVLSHLQK  
 FRECFNLNDPSKTEHLFPKATNGKTLQSGKPTNSSATELSLRNDRAEACEREGFCWNGRASISRSLELI  
 QNKEPSSKHISLCRELHTLFRVMWSGKVALVSPFAMLSVWSLIPAFRGYDQQAQEFCELLHKVQQE  
 LESEGTTRRILIPFSQRKLTKQVLKVVNTIFHGQLLSQVTCISCNYSNTIEPFWDLSEFPERYHCIE  
 KGFVPLNQTECLLLEMLAKFTETEALLEGRIYACDQCNSKRRKSNPKPLVSEARKQLMIYRLPQVLR LH  
 LKRFWRWSGRNHREKIGVHVVDQVLTMEPYCCRDMLSSLDKETFAFDLSAVVMHHGKFGFSGHYTAYCY  
 NTEGGFWHCNDSKLVNCSVEEVCKTQAYILFYTQRTVQGNARISETHLQAQVQSSNNDGRPQTF S  
 TRTRPLEMESDESGLPAMEIECRITGTLNGVEFELVGGEGTPEQGRMTNKMSTKGALTFSPYLLSHV  
 MGYGFYHFGTYPSTYENPFLHAINNGGYTNTRIEKYEDGGVLHVSFSYRYEAGRVIGDFKVMGTGFPE D  
 SVIFTDKIIRS NATVEHLHPMGDNDLDGSFTRTFLRDGGYYSSVVD SHMHFKSAIHP SILQNGGPMFA  
 FRRVEEDHSNTELGIVEYQHAFKTPDADAGEERV

**Restriction Sites:** SgfI-MluI

**Cloning Scheme:**



**ACCN:** NM\_001286554

**ORF Size:** 2064 bp

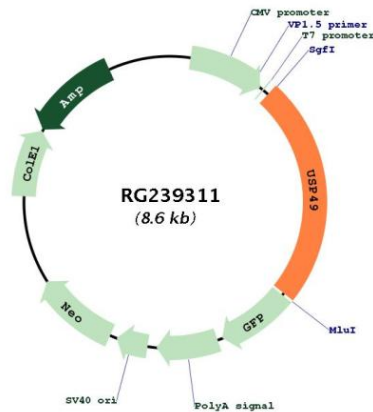
**OTI Disclaimer:** The molecular sequence of this clone aligns with the gene accession number as a point of reference only. However, individual transcript sequences of the same gene can differ through naturally occurring variations (e.g. polymorphisms), each with its own valid existence. This clone is substantially in agreement with the reference, but a complete review of all prevailing variants is recommended prior to use. [More info](#)

**OTI Annotation:** This clone was engineered to express the complete ORF with an expression tag. Expression varies depending on the nature of the gene.

**Components:** The ORF clone is ion-exchange column purified and shipped in a 2D barcoded Matrix tube containing 10ug of transfection-ready, dried plasmid DNA (reconstitute with 100 ul of water).

**RefSeq:** [NM\\_001286554.2](#)  
**RefSeq Size:** 8822 bp  
**RefSeq ORF:** 2067 bp  
**Locus ID:** 25862  
**UniProt ID:** [Q70CQ1](#)  
**Cytogenetics:** 6p21.1  
**Protein Families:** Protease, Transcription Factors  
**MW:** 79.6 kDa  
**Gene Summary:** Specifically deubiquitinates histone H2B at 'Lys-120' (H2BK120Ub). H2BK120Ub is a specific tag for epigenetic transcriptional activation and acts as a regulator of mRNA splicing. Deubiquitination is required for efficient cotranscriptional splicing of a large set of exons. [UniProtKB/Swiss-Prot Function]

**Product images:**



Circular map for RG239311