

Product datasheet for **RG239310**

SRPK2 (NM_001278273) Human Tagged ORF Clone

Product data:

Product Type:	Expression Plasmids
Product Name:	SRPK2 (NM_001278273) Human Tagged ORF Clone
Tag:	TurboGFP
Symbol:	SRPK2
Synonyms:	SFRSK2
Mammalian Cell Selection:	Neomycin
Vector:	pCMV6-AC-GFP (PS100010)
E. coli Selection:	Ampicillin (100 ug/mL)



[View online »](#)

ORF Nucleotide Sequence:

>RG239310 representing NM_001278273.
 Blue=ORF Red=Cloning site Green=Tag(s)

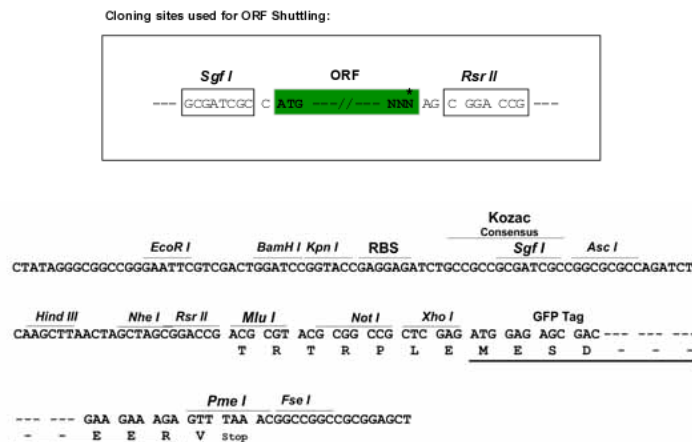
```
GCTCGTTTAGTGAACCGTCAGAATTTTGTAAACGACTCACTATAGGGCGGCCGGGAATTCGTGACTG
GATCCGGTACCGAGGAGATCTGCCGCCCGCATCGCC
ATGTCAGTTAACTCTGAGAAGTCGTCCTCTTCAGAAAGGCCGGAGCCTCAACAGAAAGCTCCTTTAGTT
CCTCCTCCTCCACCGCCACCACCACCACCACCACCGCACCTTTGCCAGACCCACACCCCGGAGCCAGAG
GAGGAGATCCTGGGATCAGATGATGAGGAGCAAGAGGACCTGCGGACTACTGCAAAGGTGGATATCAT
CCAGTGAAAATTGGAGACCTCTTCAATGGCCGGTATCATGTTATTAGAAAGCTTGGATGGGGCACTTC
TCTACTGTCTGGCTGTGCTGGGATATGCAGGGGAAAAGATTTGTTGCAATGAAAGTTGTA AAAAGTGCC
CAGCATTATACGGAGACAGCCTTGGATGAAATAAAATTGCTCAAATGTGTTGAGAAAAGTGATCCCAGT
GACCCAAACAAAGACATGGTGGTCCAGCTCATTGACGACTTCAAGATTCAGGCATGAATGGGATACAT
GTCTGCATGGTCTTGAAGTACTTGGCCACCATCTCTCAAGTGGATCATCAAATCCAATATCAAGGC
CTCCAGTACGTTGTGTGAAGATATCATTGACAGGTCCTTCAAGGGTTAGATTACTTACACAGTAAG
TGCAAGATCATTACTGACATAAAGCCGAAAAATATCTTGATGTGTGGATGATGCATATGTGAGA
AGAATGGCAGCTGAGGCCACTGAGTGGCAGAAAGCAGGTCTCCTCCTCCTTCAAGGTCTGCAGTGAGT
ACGGCTCCACAGCAGAAACCTATAGGAAAAATATCTAAAAACAAAAAGAAAAAAGTAAAAAGAAACAG
AAGAGGCAGGCTGAGTTATTGGAGAAGCGCCTGCAGGAGATAGAAGAATTGGAGCGAGAAGCTGAAAGG
AAAATAATAGAAGAAAACATCACCTCAGCTGCACCTTCCAATGACCAGGATGGCGAATACTGCCAGAG
GTGAAACTAAAAACAACAGGATTAGAGGAGGCGGCTGAGGCAGAGACTGCAAAGGACAATGGTGAAGCT
GAGGACCAGGAAGAGAAAGAAGATGCTGAGAAAGAAAACATTGAAAAAGATGAAGATGATGTAGATCAG
GAACTTGCGAACATAGACCCTACGTGGATAGAATCACCTAAAACCAATGGCCATATTGAGAATGGCCCA
TTCTCACTGGAGCAGCAACTGGACGATGAAGATGATGATGAAGAAGACTGCCCAAATCCTGAGGAATAT
AATCTTGATGAGCCAAATGCAGAAAGTGATTACACATATAGCAGCTCCTATGAACAATTCATGGTGAA
TTGCCAAATGGACGACATAAAATTTCCCGAGTCACAGTTCCAGAGTTTTCCACCTCGTTGTTCTCTGGA
TCCTTAGAACCTGTGGCCTGCGGCTCTGTGCTTTCTGAGGGATCACCACTTACTGAGCAAGAGGAGAGC
AGTCCATCCCATGACAGAAGCAGAACGGTTTTAGCCTCCAGTACTGGGGATTTGCCAAAAGCAAAAACC
CGGGCAGCTGACTTGTGGTGAATCCCCTGGATCCGCGGAATGCAGATAAAATTAGAGTAAAAATTGCT
GACCTGGGAAATGCTTGTGGTGCATAAACACTTCACGGAAGACATCCAGACCGCTCAGTACCGCTCC
ATAGAGGTTTTAATAGGAGCGGGGTACAGCACCCCTGCGGACATCTGGAGCACGGCGTGTATGGCATT
GAGCTGGCAACGGGAGATTATTTGTTTGAACCACATTCTGGGGAAGACTATTCCAGAGACGAAGACCAC
ATAGCCCACATCATAGAGCTGCTAGGCAGTATTCCAAGGCACTTTGCTCTATCTGAAAAATATTCTCGG
GAATTCCTCAATCGCAGAGGAGAACTGCGACACATCACCAAGCTGAAGCCCTGGAGCCTCTTTGATGTA
CTTGTGGAAAAGTATGGCTGGCCCCATGAAGATGCTGCACAGTTTACAGATTTCTGATCCCGATGTTA
GAAATGGTTCCAGAAAAACGAGCCTCAGCTGGCGAATGCCTTCGGCATCCTTGTTGAATTCT
AGCGGACCGACGCGTACGCGGCCGCTCGAG - GFP Tag - GTTAAAC
```

Protein Sequence: >Peptide sequence encoded by RG239310
 Blue=ORF Red=Cloning site Green=Tag(s)

MSVNSEKSSSSERPEPQQKAPLVPPPPPPPPPPPLPDPTPEPEEEILGSDDEEQEDPADYCKGGYH
 PVKIGDLFNTRYHVIRKLGWGHFSTVWLCWDMQGRFVAMKVVKSAQHYTETALDEIKLLKCVRES
 DPNKDMVVQLIDDFKISGMNGIHVCMVFEVLGHLLKWIKSNYQGLPVRVKSIIQVQLQGLDYLH
 SKCKIHTDIKPENILMCVDDAYVRRMAAEATEWQKAGAPPPSGSAVSTAPQQKPIGKISKNNKKL
 KKKQKRQAEELLEKRLQEIIEELERAERKIIENITSAAPSNDQDGEYCPVKLKTGLEEAAEAET
 AKDNGEAEQEEKEDAENIEKDEDDVDQELANIDPTWIESPKTNGHIENGPFSLEQQLDDEDDDE
 EDCPNPEEYNLDEPNAESDYTYSSSYEQFNGELPNGRHKIPESQFPEFSTSLFSGSLEPVACG
 SVLSEGSPLTEQEESPSHDSRTVSASSTGDLPAKTRAADLLVNPLDPRNADKIRVKIADLGNAC
 WWHKFTEDIQTRQYRSIEVLIGAGYSTPADIWSTACMAFELATGDYLFEPHSGEDYSRDEDH
 IAHIIELLGSIPRHFALSGKYSREFFNRRELRIITKLKPSLFDVLVEKYGWPHEAAQFTDFL
 IPMLEMVPEKRSAGECLRHPWLNSGPRTRTRPLEMESDESGLPAMEIECRITGTLNGVEFEL
 VGGGEGTPEQGRMTNKMSTKGALTFSPYLLSHVMGYGFYHFGTYPSTYENPFLHAINNGGY
 TNTRIEKYEDGGVLHVSFSYRYEAGRVIQDFKVMGTGFPEDSVIFTDKIIRSNATVEHLHP
 MGDNDLDGSFTRTFLRDGGYSSVVDSHMHFKSAIHPSILQNGGPMFAFRRVEEDHSNTE
 LGIVEYQHAFKTPDADAGEERV

Restriction Sites: SgfI-RsrII

Cloning Scheme:



ACCN: NM_001278273

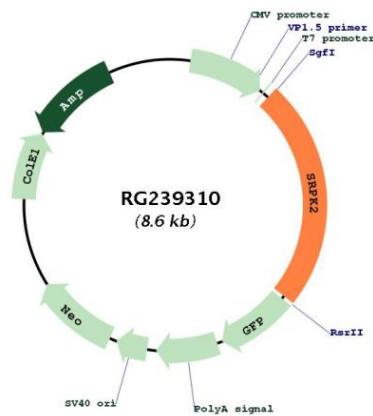
ORF Size: 2064 bp

OTI Disclaimer: The molecular sequence of this clone aligns with the gene accession number as a point of reference only. However, individual transcript sequences of the same gene can differ through naturally occurring variations (e.g. polymorphisms), each with its own valid existence. This clone is substantially in agreement with the reference, but a complete review of all prevailing variants is recommended prior to use. [More info](#)

OTI Annotation: This clone was engineered to express the complete ORF with an expression tag. Expression varies depending on the nature of the gene.

Components:	The ORF clone is ion-exchange column purified and shipped in a 2D barcoded Matrix tube containing 10ug of transfection-ready, dried plasmid DNA (reconstitute with 100 ul of water).
RefSeq:	NM_001278273.1 , NP_001265202.1
RefSeq Size:	3727 bp
RefSeq ORF:	2067 bp
Locus ID:	6733
UniProt ID:	P78362
Cytogenetics:	7q22.3
Protein Families:	Druggable Genome, Protein Kinase
MW:	77.5 kDa
Gene Summary:	Serine/arginine-rich protein-specific kinase which specifically phosphorylates its substrates at serine residues located in regions rich in arginine/serine dipeptides, known as RS domains and is involved in the phosphorylation of SR splicing factors and the regulation of splicing. Promotes neuronal apoptosis by up-regulating cyclin-D1 (CCND1) expression. This is done by the phosphorylation of SRSF2, leading to the suppression of p53/TP53 phosphorylation thereby relieving the repressive effect of p53/TP53 on cyclin-D1 (CCND1) expression. Phosphorylates ACIN1, and redistributes it from the nuclear speckles to the nucleoplasm, resulting in cyclin A1 but not cyclin A2 up-regulation. Plays an essential role in spliceosomal B complex formation via the phosphorylation of DDX23/PRP28. Can mediate hepatitis B virus (HBV) core protein phosphorylation. Plays a negative role in the regulation of HBV replication through a mechanism not involving the phosphorylation of the core protein but by reducing the packaging efficiency of the pregenomic RNA (pgRNA) without affecting the formation of the viral core particles.[UniProtKB/Swiss-Prot Function]

Product images:



Circular map for RG239310