

Product datasheet for **RG239302**

ACTN2 (NM_001278344) Human Tagged ORF Clone

Product data:

Product Type:	Expression Plasmids
Product Name:	ACTN2 (NM_001278344) Human Tagged ORF Clone
Tag:	TurboGFP
Symbol:	ACTN2
Synonyms:	CMD1AA; CMH23; MPD6; MYOCOZ
Mammalian Cell Selection:	Neomycin
Vector:	pCMV6-AC-GFP (PS100010)
E. coli Selection:	Ampicillin (100 ug/mL)



[View online »](#)

**ORF Nucleotide
Sequence:**

>RG239302 representing NM_001278344.
 Blue=ORF Red=Cloning site Green=Tag(s)

```

GCTCGTTTAGTGAACCGTCAGAATTTTGTAAACGACTCACTATAGGGCGGCCGGGAATTCGTGACTG
GATCCGGTACCGAGGAGATCTGCCGCCCGGATCGCC
ATGACGTACGTCCTTTGCTTCTACCACGCTTTTGCGGCGCGGAGCAGGTTAGACAAAGTCTTAAAGCA
CACTCAGCTCTGTGGAAGGATCCCCCTCCAGAAAGTTCTACATGTTTATATCAGGAGATGAGGAGGTTCT
TCAGTGAATTCAGTGAATGGCCGAGACAGCGGCTAACAGGATATGTAAGGTTCTTGTGTGAATCAA
GAGAATGAGAGGCTGATGGAAGAATATGAGAGGCTAGCGAGTGAGCTTTTGAATGGATTCTGCGCACG
ATCCCCTGGCTGGAGAACCGGACTCCCAGAGAAGCCATGCAAGCCATGCAGAAGAAGCTGGAGGACTTC
CGGGATTACCGCCGAAGCACAAGCCACCAAGGTGCAGGAGAAAATGCCAGCTGGAGATCAACTTCAAC
ACGCTGCAGACCAAGCTGCGGATCAGCAACCGTCTGCCTTCATGCCCTCCGAGGGCAAGATGGTGTGCG
GATATTGTGGTGCCTGGCAGAGGCTGGAGCAGGCTGAGAAGGTTACGAGGAGTGGTTGCTCAATGAG
ATTCGGAGACTGGAGCGCTTGAACACCTGGCTGAGAAGTTACGAGCAGAAGGCCCAACGCACGAGACT
TGGGCTTATGGCAAAGAGCAGATCTTGTGCAGAAGGATTACGAGTCGGCGTCGTCGACAGAGGTGCGG
GCTCTGTGCGGAAGCAGGAGCGTTCGAGAGCGACCTGGCAGCGCACAGGACCGCGTGGAGCAGATC
GCAGCCATCGCGCAGGAGCTCAATGAATGGACTATCACGACGCTGTGAATGTCAATGATCGGTGCCAG
AAAATTTGTGACCAAGTGGGACCGACTGGGAACGCTTACTCAGAAGAGGAGAGAAGCCCTAGAGAGAATG
GAGAAATTGCTAGAAACCATGATCAGCTTACCTGGAGTTTGCAGAGGGGCTGCTCCTTTCAACAAT
TGGATGGAGGGCGCTATGGAGGATCTGCAAGATATGTTTATTGTCACAGCATTGAGGAGATCCAGAGT
CTGATCACTGCGCATGAGCAGTTCAAGGCCACGCTGCCGAGGCGGACGGAGAGCGGCAGTCCATCATG
GCCATCCAGAACGAGGTGGAGAAGGTGATTCAGAGCTACAACATCAGAATCAGCTCAAGCAACCCGTAC
AGCACTGTCAACATGGATGAGCTCCGGACCAAGTGGGACAAGGTGAAGCAACTCGTCCCATCCGCGAT
CAATCCCTGCAGGAGGAGCTGGCTCGCCAGCATGCTAACGAGCGTCTGAGGCGCCAGTTTGTGCCCAA
GCCAATGCCATTGGGCCCTGGATCCAGAACAAGATGGAGGAGATTGCCCGGAGCTCCATCCAGATCACA
GGAGCCCTGGAAGACCAGATGAACCAGCTGAAGCAGTATGAGCACAACATCATCAACTATAAGAACAAC
ATCGACAAGCTGGAGGGAGACCATCAGCTCATCCAGGAGGCCCTTGTCTTTGACAACAAGCACACGAAC
TACACGATGGAGCACATTCGTGTTGGATGGGAGCTGCTGCTGACAACCATCGCCAGAACCATCAATGAG
GTGGAGACTCAGATCCTGACGAGAGATGCGAAGGGCATCACCCAGGAGCAGATGAATGAGTTCAGAGCC
TCCTTCAACCACTTTGACAGGAGGAAGAATGGCCTGATGGATCATGAGGATTTTACAGGCTGCCTGATT
TCCATGGGTTATGACCTGGTGAAGCCGAATTTGCCCGCATTATGACCCTGGTAGATCCCAACGGGCAA
GGCACCGTCACCTTCCAATCCTTCATCGACTTCATGACTAGAGAGACGGCTGACACCGACTGCCGAG
CAGGTCATCGCCTCCTCCGGATCCTGGCTTCTGATAAGCCATACATCCTGGCGGAGGAGCTGCGTCCG
GAGCTGCCCCCGGATCAGGCCAGTACTGCATCAAGAGGATGCCCGCCTACTCGGGCCAGGCGATGTG
CCTGGTGCCTGGATTACGCTGCGTTCTTCCGCACTTACGGGGAGAGCGATCTG
ACGCGTACGCGGCCGCTCGAG - GFP Tag - GTTTAAAC
  
```

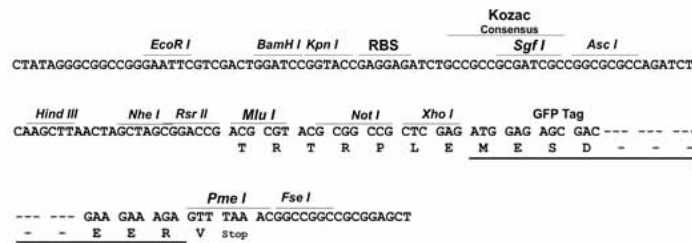
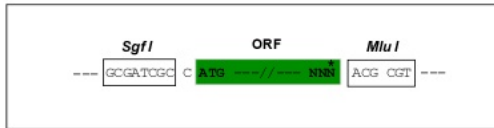
Protein Sequence: >Peptide sequence encoded by RG239302
 Blue=ORF Red=Cloning site Green=Tag(s)

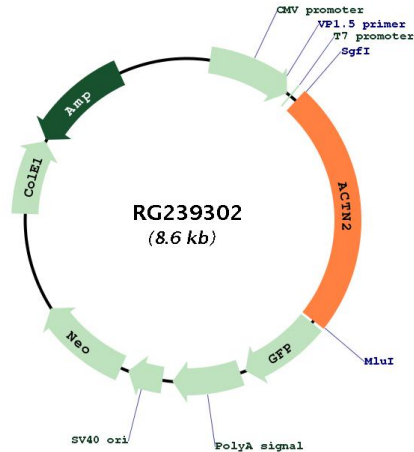
MTYVSCFYHAFAGAEQVRQSLKAHSALWKDPPPESTCSYQEMRRSSVNSSAMAETAANRICKVLAVNQ
 ENERLMEEYERLASELLEWIRRTIPWLENRTPEKTMQAMQKLEDFRDYRRKHKPPKVQEKQLEINFN
 TLQTKLRISNRPAFMPSEGKMSVSDIAGAWQRLQAEKGYEEWLLNEIRRLERLEHLAEKFRQKASTHET
 WAYGKEQILLQKDYESASLTEVRALLRKHEAFESDLAAHQDRVEQIAAIAQELNELDYHDVNVNDRQC
 KICDQWDRLGTLTQKRREALERMEKLETTIDQLHLEFAKRAAPFNWMEGAMEDLQDMFIVHSIEEIQS
 LITAHEQFKATLPEADGERQSIMAIQNEVEKVIQSYNIRISSSNPYSTVTMDELRTKWDKVKQLVPIRD
 QSLQEELARQHANERLRRQFAAQANAIGPWIQNKMEIARSSIQITGALEDQMNQLKQYEHNIINYKNN
 IDKLEGDHQLIQEALVFDNKHTNYTMEHIRVWELLLTTIARTINEVETQILTRDAKGITQEQMNEFRA
 SFNHFDRRKNGLMDHEDFRACLISMGYDLGAEAFARIMTLVDPNGQGTVTFQSFIDFMTRETADTDTAE
 QVIASFRILASDKPYILAEELRRELPPDQAQYCIKMPAYSGPGSVPGALDYAAFSSALYGESDL
TRTRPLEMESDESGLPAMEIECRITGTLNGVEFELVGGEGTPEQGRMTNKMKSTKGALTFSPYLLSHV
 MGYGFYHFGTYPSTYENPFLHAINNGGYTNTRIEKYEDGGVLHVSFSYRYEAGRVIGDFKVMGTGFPEP
 SVIFTDKIIRSNAIVEHLHPMGDNDLDGSFTRTFLRDGGYSSVVDSHMHFKSAIHPSILQNGGPMFA
 FRRVEEDHSNTELGIVEYQHAFKTPDADAGEERV

Restriction Sites: SgfI-MluI

Cloning Scheme:

Cloning sites used for ORF Shuttling:



Plasmid Map:


ACCN: NM_001278344

ORF Size: 2058 bp

OTI Disclaimer: The molecular sequence of this clone aligns with the gene accession number as a point of reference only. However, individual transcript sequences of the same gene can differ through naturally occurring variations (e.g. polymorphisms), each with its own valid existence. This clone is substantially in agreement with the reference, but a complete review of all prevailing variants is recommended prior to use. [More info](#)

OTI Annotation: This clone was engineered to express the complete ORF with an expression tag. Expression varies depending on the nature of the gene.

Components: The ORF clone is ion-exchange column purified and shipped in a 2D barcoded Matrix tube containing 10ug of transfection-ready, dried plasmid DNA (reconstitute with 100 ul of water).

RefSeq: [NM_001278344.1](#), [NP_001265273.1](#)

RefSeq Size: 5123 bp

RefSeq ORF: 2061 bp

Locus ID: 88

UniProt ID: [P35609](#)

Cytogenetics: 1q43

Protein Pathways:	Adherens junction, Arrhythmogenic right ventricular cardiomyopathy (ARVC), Focal adhesion, Leukocyte transendothelial migration, Regulation of actin cytoskeleton, Systemic lupus erythematosus, Tight junction
MW:	80.1 kDa
Gene Summary:	Alpha actinins belong to the spectrin gene superfamily which represents a diverse group of cytoskeletal proteins, including the alpha and beta spectrins and dystrophins. Alpha actinin is an actin-binding protein with multiple roles in different cell types. In nonmuscle cells, the cytoskeletal isoform is found along microfilament bundles and adherens-type junctions, where it is involved in binding actin to the membrane. In contrast, skeletal, cardiac, and smooth muscle isoforms are localized to the Z-disc and analogous dense bodies, where they help anchor the myofibrillar actin filaments. This gene encodes a muscle-specific, alpha actinin isoform that is expressed in both skeletal and cardiac muscles. Several transcript variants encoding different isoforms have been found for this gene. [provided by RefSeq, May 2013]