

## Product datasheet for **RG239300**

### **MCAK (KIF2C) (NM\_001297655) Human Tagged ORF Clone**

#### **Product data:**

Product Type:	Expression Plasmids
Product Name:	MCAK (KIF2C) (NM_001297655) Human Tagged ORF Clone
Tag:	TurboGFP
Symbol:	KIF2C
Synonyms:	CT139; KNSL6; MCAK
Mammalian Cell Selection:	Neomycin
Vector:	pCMV6-AC-GFP (PS100010)
E. coli Selection:	Ampicillin (100 ug/mL)



[View online »](#)

ORF Nucleotide  
Sequence:

>RG239300 representing NM\_001297655.  
Blue=ORF Red=Cloning site Green=Tag(s)

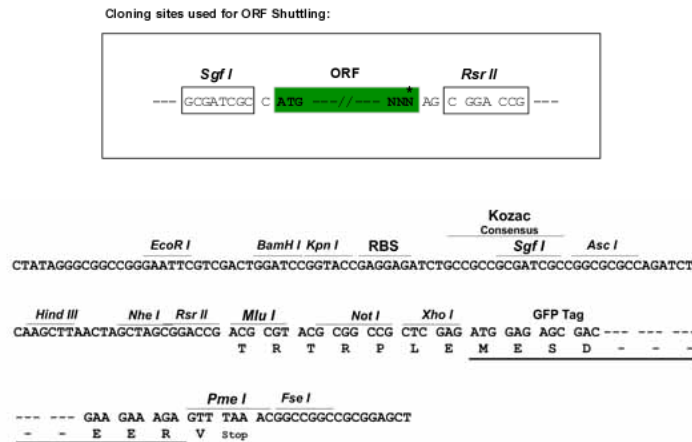
```
GCTCGTTAGTGAACCGTCAGAATTTTGTAAACGACTCACTATAGGGCGGCCGGGAATTCGTGACTG
GATCCGGTACCGAGGAGATCTGCCGCCGCGATCGCC
ATGGCCATGGACTCGTCGCTTCAGGCCCGCTGTTCCCGGTCTCGCTATCAAGATCCAACGCAGTAAT
GGTTAATTCACAGTGCCAATGTAAGACTGTGAACCTGGAGAAATCCTGTGTTTCAGTGAATGGGCA
GAAGGAGGTGCCACAAAGGGCAAAGAGATTGATTTTGATGATGTGGCTGCAATAAACCCAGAACTCTTA
CAGCTTCTCCCTTACATCCGAAGGACAATCTGCCCTTGACGAAATGTAACAATCCAGAAACAAAA
CGGAGATCCGTCAACTCCAAAATTCCTGCTCCAAAAGAAAGTCTTCAAGCCGCTCCACTCGCATGTCC
ACTGTCTCAGAGCTTCGCATCACGGCTCAGGAGAAATGACATGGAGGTGGAGCTGCCTGCAGCTGCAAC
TCCCGCAAGCAGTTTTTCAGTTCCTTTCGGAGGAAATCATGTCTTGTGAAGGAAGTGAAAAATGAAG
AACAGCGAGAAGAGAAGAAGGCCAGAACTCTGAAATGAGAATGAAGAGAGCTCAGGAGTATGACAGT
AGTTTTCCAACTGGGAATTTGCCGAATGATTAAGAATTTCCGGCTACTTTGGAATGCATCCACTT
ACTATGACTGATCCTATCGAAGAGCACAGAATATGTGTCTGTGTTAGGAAACGCCACTGAATAAGCAA
GAATTGGCCAAGAAAGAAATGATGTGATTTCCATTCCAGCAAGTGTCTCCTCTTGGTACATGAACCC
AAGTTGAAAGTGGACTTAACAAAGTATCTGGAGAACCAAGCATTCTGCTTTGACTTTGCATTTGATGAA
ACAGCTTCGAATGAAGTTGTCTACAGGTTACAGCAAGGCCACTGGTACAGACAATCTTTGAAGGTGGA
AAAGCAACTTGTTTTGCATATGGCCAGACAGGAAGTGGAAGACACATACTATGGGCGGAGACCTCTCT
GGGAAAGCCAGAATGCATCCAAAGGGATCTATGCCATGGCCTCCCGGGAGCTTCTCCTCTGAAGAAAT
CAACCCTGCTACCGGAAGTTGGGCTGGAAGTCTATGTGACATCTTCGAGATCTACAATGGGAAGCTG
TTTGACCTGCTCAACAAGAAGGCCAAGCTGCGCGTGTGGAGGACGGCAAGCAACAGGTGCAAGTGGTG
GGGCTGCAGGAGCATCTGGTAACTCTGCTGATGATGTCATCAAGATGATCGACATGGGAGCGCCTGC
AGAACCTCTGGGAGACATTTGCCAACTCCAATTCCTCCCGCTCCACCGGTGCTTCCAAATTATTCTT
CGAGCTAAAGGGAGAATGCATGGCAAGTTCTTTGGTAGATCTGGCAGGGAATGAGCGAGGCGCGGAC
ACTTCCAGTGCTGACCGGACAGCCGCATGGAGGGCGCAGAAATCAACAAGAGTCTCTTAGCCCTGAAG
GAGTGCATCAGGGCCCTGGGACAGAACAAGGCTCACACCCGTTCCGTGAGAGCAAGCTGACACAGGTG
CTGAGGGACTCCTTATTGGGGAGAACTTAGGACTTGCATGATTGCCACGATCTCACCAGGCATAAGC
TCCTGTGAATATACTTTAAACACCCTGAGATATGCAGACAGGGTCAAGGAGCTGAGCCCCACAGTGGG
CCCAGTGGAGAGCAGTTGATTCAAATGGAACAGAAGAGATGGAAGCCTGCTCTAACGGGGCGCTGATT
CCAGGCAATTTATCCAAGGAAGAGGAGGAACTGTCTTCCAGATGTCCAGCTTTAACGAAGCCATGACT
CAGATCAGGGAGCTGGAGGAGAAGGCTATGGAAGAGCTCAAGGAGATCATACAGCAAGGACCAGACTGG
CTTGAGCTCTCTGAGATGACCGAGCAGCCAGACTATGACCTGGAGACCTTTGTGAACAAAGCGGAATCT
GCTCTGGCCAGCAAGCAAGCATTCTCAGCCCTGCGAGATGTCATCAAGGCCTTGGCCTGGCCATG
CAGCTGGAAGAGCAGGCTAGCAGACAAATAAGCAGCAAGAAACGGCCCCAG
AGCGGACCGACGCGTACGCGGCCGCTCGAG - GFP Tag - GTTAAAC
```

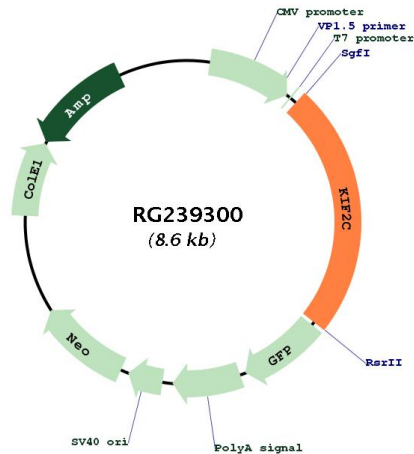
Protein Sequence: >Peptide sequence encoded by RG239300  
 Blue=ORF Red=Cloning site Green=Tag(s)

MAMDSSLQARLFPGLAIKIQRSNGLIHSANVRTVNLEKSCVSVVEAEGGATKGKEIDFDDVAAINPELL  
 QLLPLHPKDNLPLQENVTIQKQRRSVNSKIPAPKESLSRSTRMSTVSELRITAQENDMEVELPAAAN  
 SRKQFSVPLRRKSCLVKEVEKMKNKREEKKAQNSEMRMRAQYDSSFNWEFARMIKEFRATLECHPL  
 TMTDPIEEHRICVCRKRPLNKQELAKKEIDVISIPSKCLLLVHEPKLKVDLTKYLENQAFCFDFAFDE  
 TASNEVYRFTARPLVQTFEGGKATCFAYGQTGSGKTHTMGGDLSGKAQNASKGIYAMASRDVFLLNK  
 QPCYRKLGLEVYVTFE.IYNGKLFDLLNKKAKLRVLEDGKQVQVVGLQEHLVNSADDVIKIDMGSAC  
 RTSQTFANSNRSRHACFQIILRAKGRMHGKFSVLDLAGNERGADTSSADRQTRMEGAEINKSLLALK  
 ECIRALGQNKAHTPFRESKLTQVLRDSFIGENSRTCMIATISPGISSCEYTLNLRADRVKELSPHSG  
 PSGEQLIQMETEEMEACSNALIPGNLSKEEEEELSSQMSSFNEAMTQIRELEEKAMEELKEIIQQGPDW  
 LELSEMTEQPDYDLETFVNKAESALAAQAKHFSALRDVIKALRLAMQLEEASRQISSKKRPQ  
 SGPTRTRPLEMESDESGLPAMEIECRITGTLNGVEFELVGGGEGTPEQGRMTNKMSTKGALTFSPYLL  
 SHVMGYGFYHFGTYPSTYENPFLHAINNGGYTNTRIEKYEDGGVLHVSFSYRYEAGRVIQDFKVMGTGF  
 PEDSVIFTDKIIRSNATVEHLHPMGDNDLDGSFTRTFSLRDGGYSSVVDSHMHFKSAIHPSILQNGGP  
 MFAFRRVEEDHSNTELGIVEYQHAFKTPDADAGEERV

Restriction Sites: SgfI-RsrII

Cloning Scheme:



**Plasmid Map:**


<b>ACCN:</b>	NM_001297655
<b>ORF Size:</b>	2052 bp
<b>OTI Disclaimer:</b>	The molecular sequence of this clone aligns with the gene accession number as a point of reference only. However, individual transcript sequences of the same gene can differ through naturally occurring variations (e.g. polymorphisms), each with its own valid existence. This clone is substantially in agreement with the reference, but a complete review of all prevailing variants is recommended prior to use. <a href="#">More info</a>
<b>OTI Annotation:</b>	This clone was engineered to express the complete ORF with an expression tag. Expression varies depending on the nature of the gene.
<b>Components:</b>	The ORF clone is ion-exchange column purified and shipped in a 2D barcoded Matrix tube containing 10ug of transfection-ready, dried plasmid DNA (reconstitute with 100 ul of water).
<b>RefSeq:</b>	<a href="#">NM_001297655.2</a>
<b>RefSeq Size:</b>	2773 bp
<b>RefSeq ORF:</b>	2055 bp
<b>Locus ID:</b>	11004
<b>UniProt ID:</b>	<a href="#">Q99661</a>
<b>Cytogenetics:</b>	1p34.1
<b>Protein Families:</b>	Druggable Genome

**MW:** 77.4 kDa

**Gene Summary:** This gene encodes a kinesin-like protein that functions as a microtubule-dependent molecular motor. The encoded protein can depolymerize microtubules at the plus end, thereby promoting mitotic chromosome segregation. Alternative splicing results in multiple transcript variants. [provided by RefSeq, Jul 2014]