

Product datasheet for **RG239298**

ITGB6 (NM_001282355) Human Tagged ORF Clone

Product data:

Product Type:	Expression Plasmids
Product Name:	ITGB6 (NM_001282355) Human Tagged ORF Clone
Tag:	TurboGFP
Symbol:	ITGB6
Synonyms:	A11H
Mammalian Cell Selection:	Neomycin
Vector:	pCMV6-AC-GFP (PS100010)
E. coli Selection:	Ampicillin (100 ug/mL)



[View online »](#)

ORF Nucleotide
Sequence:

>RG239298 representing NM_001282355.
Blue=ORF Red=Cloning site Green=Tag(s)

```
GCTCGTTTAGTGAACCGTCAGAATTTTGTAAACGACTCACTATAGGGCGGCCGGGAATTCGTGACTG
GATCCGGTACCGAGGAGATCTGCCGCCACGATCGCC
ATGGGGATTGAACTGCTTTGCCGTCTTTCTATTTCTAGGAAGGAATGATCACGTACAAGGTGGCTGT
GCCCTGGGAGGTGCAGAAACCTGTGAAGACTGCCTGCTTATTGGACCTCAGTGTGCCTGGTGTGCTCAG
GAGAAATTTACTCATCCATCTGGAGTTGGCGAAAAGGTGTGATACCCAGCAAACCTTTTAGCTAAAGGA
TGCAATTAACCTTCATCGAAAACCTGTCTCCCAAGTAGAAATACTTAAAAATAAGCCTCTCAGTGTA
GGCAGACAGAAAAATAGTTCTGACATTGTTGAGATTGCGCCTCAAAGCTTGATCCTTAAGTTGAGACCA
GGTGGTGCAGACTCTGCAGGTGCATGTCCGCCAGACTGAGGACTACCCGGTGGATTTGTATTACCTC
ATGGACCTCTCCGCTCCATGGATGACGACCTCAACACAATAAAGGAGCTGGGCTCCCGCTTTCCAAA
GAGATGTCTAAATTAACAGCAACTTTAGACTGGGCTTCGGATCTTTTGTGAAAAACCTGTATCCCTT
TTTGTGAAAAACAACCCAGAAGAAATTGCCAACCTTGCAGTAGTATTCCATACTCTGTTTACCTACA
TTTGGATTCAAGCACATTTTGCATTGACAAATGATGCTGAAAGATTCAATGAAATTGTGAAGAATCAG
AAAATTTCTGCTAATATTGACACACCCGAAGGTGGATTTGATGCAATTATGCAAGCTGCTGTGTGTAA
GAAAAATTTGGCTGGCGGAATGACTCCCTCCACCTCCTGGTCTTTGTGAGTGATGCTGATTCTCATTTT
GGAATGGACAGCAAACTAGCAGGCATCGTCATTCTAATGACGGGCTCTGTCACTTGACAGCAAGAAT
GAATACTCCATGTCAACTGTCTTGGAAATATCCAACAATTGGACAACCTATTGATAAACTGGTACAAAAC
AACGTGTTATTGATCTTCGCTGTAAACCAAGAACAAGTTCATTTATAGAGAATTACGCAAACTTATT
CCTGGAGCTACAGTAGGTCTACTTCAGAAGGACTCCGGAAACATTCTCCAGCTGATCATCTCAGCTTAT
GAAGAACTGCGGTCTGAGGTGGAAGTATTAGGAGACACTGAAGGACTCAACTTGCATTTACA
GCCATCTGTAAACAACGGTACCCTTTCCAACACCAAAAGAAATGCTCTCACATGAAAGTGGGAGACACA
GCTTCCTTCAGCGTGACTGTGAATATCCACACTGCGAGAGAAGAAGCAGGCACATTATCATAAAGCCT
GTGGGGCTGGGGGATGCCTGGAATTACTTGTCAGCCAGAAATGCAACTGCGACTGTCAGAAAGAAGTG
GAAGTGAACAGCTCCAAATGTCACCACGGGAACGGCTCTTTCCAGTGTGGGGTGTGTGCCTGCCACCCT
GGCCACATGGGGCCTCGCTGTGAGTGTGGCGAGGACATGCTGAGCACAGATTCTGCAAGGAGGCCCA
GATCATCCCTCTGCAGCGGAAGGGGTGACTGCTACTGTGGCAGTGTATCTGCCACTTGTCTCCCTAT
GGAAACATTTATGGGCCATTATTGCCAGTGTGACAATTTCTCTGCGTGAGACACAAGGGCTGCTCTGC
GGAGATTTCTCAAAGGATGGTTCTGTTTCTGCTCTCTGCAAGGAGAAAAATGAATGTCTTATTACATTC
CTAATAACTACAGATAATGAGGGGAAAACCATCATTACAGCATCAATGAAAAAGATTGTCCGAGCCT
CCAACATTTCCATGATCATGTTAGGGGTTTCCCTGGCTATTCTTCTCATCGGGGTGTCTACTGTGC
ATCTGGAAGCTACTGGTGTCAATTCATGATCGTAAAGAAGTTGCCAAATTTGAAGCAGAACGATCAAAA
GCCAAGTGGCAAACGGGAACCAATCCACTCTACAGAGGATCCACAAGTACTTTTAAAAATGTAACCTAT
AAACACAGGGAAAAACAAAAGGTAGACCTTTCCACAGATTGC
ACGCGTACGCGGCCGCTCGAG – GFP Tag – GTTTAAAC
```

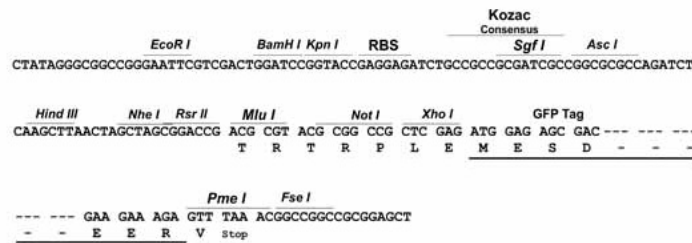
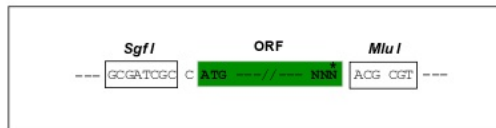
Protein Sequence: >Peptide sequence encoded by RG239298
 Blue=ORF Red=Cloning site Green=Tag(s)

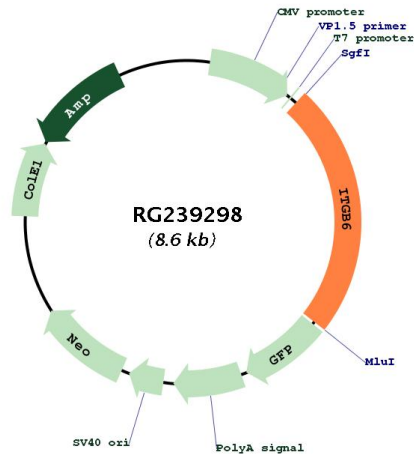
MGIELLCLFFLGRNDHVQGGCALGGAETCEDCLLIGPQCAWCAQENFTHPSGVGERCDTPANLLAKG
 CQLNFIENPVSQVEILKNKPLSVGRQKNSSDIVQIAPQSLILKLRPGGAQTLQVHVRQTEDYVPDLYL
 MDLSASMDDDLNTIKELGSRLSKEMSKLTSNFRLGFGSFVEKPVSPFVKTTPEEIANPCSSIPYFCLPT
 FGFKHILPLTNDARFNEIVKNQKISANIDTPEGGFDAIMQAAVCKEKIGWRNDSLHLLVAVTQEQVHLYENYAKLI
 PGATVGLLQKDSGNILQLIISAYEELRSEVELEVLGDTEGLNLSFTAICNNGTLFQHKKCSHMKVGD
 ASFSVTVNIHPCERRSRHIIKPVGLGDALELLVSPECNDCQKEVEVNSSKCHHGNSFQCGVCACHP
 GHMGPCECGEDMLSTDSCKEAPDHPSCSGRGDCYCGQCICHLSPYGNIIYGPYCCDNFSCVRHKGLLC
 GDFSKDGSVSCSLQGENECLITFLITTDNEGKTIHSINEKDCPKPPNIPMIMLGVSLAILLIGVLLC
 IWKLLVSFHDRKEVAKFEAERSKAKWQTGNPLYRGSTSTFKNVTYKHREKQKVDLSTDC
TRTRPLEMESDESGLPAMEIECRITGTLNGVEFELVGGEGTPEQGRMTNKMKSTKGALTFSPYLLSHV
 MGYGFYHFGTYPSTYENPFLHAINNGGYTNTRIEKYEDGGVLHVSFSYRYEAGRVIGDFKVMGTGFPED
 SVIFTDKIIRSNAIVEHLHPMGDNDLDGSFTRTFLRDGGYSSVVDSHMHFKSAIHPSILQNGGPMFA
 FRRVEEDHSNTELGIVEYQHAFKTPDADAGEERV

Restriction Sites: SgfI-MluI

Cloning Scheme:

Cloning sites used for ORF Shuttling:



Plasmid Map:


ACCN:	NM_001282355
ORF Size:	2043 bp
OTI Disclaimer:	The molecular sequence of this clone aligns with the gene accession number as a point of reference only. However, individual transcript sequences of the same gene can differ through naturally occurring variations (e.g. polymorphisms), each with its own valid existence. This clone is substantially in agreement with the reference, but a complete review of all prevailing variants is recommended prior to use. More info
OTI Annotation:	This clone was engineered to express the complete ORF with an expression tag. Expression varies depending on the nature of the gene.
Components:	The ORF clone is ion-exchange column purified and shipped in a 2D barcoded Matrix tube containing 10ug of transfection-ready, dried plasmid DNA (reconstitute with 100 ul of water).
RefSeq:	NM_001282355.2
RefSeq Size:	4372 bp
RefSeq ORF:	2046 bp
Locus ID:	3694
UniProt ID:	P18564
Cytogenetics:	2q24.2
Protein Families:	Druggable Genome, Transmembrane

Protein Pathways:	Arrhythmogenic right ventricular cardiomyopathy (ARVC), Dilated cardiomyopathy, ECM-receptor interaction, Focal adhesion, Hypertrophic cardiomyopathy (HCM), Regulation of actin cytoskeleton
MW:	75.4 kDa
Gene Summary:	This gene encodes a protein that is a member of the integrin superfamily. Members of this family are adhesion receptors that function in signaling from the extracellular matrix to the cell. Integrins are heterodimeric integral membrane proteins composed of an alpha chain and a beta chain. The encoded protein forms a dimer with an alpha v chain and this heterodimer can bind to ligands like fibronectin and transforming growth factor beta 1. Alternate splicing results in multiple transcript variants. [provided by RefSeq, Sep 2013]