

Product datasheet for **RG239287**

SRRM3 (NM_001291831) Human Tagged ORF Clone

Product data:

| | |
|---------------------------|---|
| Product Type: | Expression Plasmids |
| Product Name: | SRRM3 (NM_001291831) Human Tagged ORF Clone |
| Tag: | TurboGFP |
| Symbol: | SRRM3 |
| Mammalian Cell Selection: | Neomycin |
| Vector: | pCMV6-AC-GFP (PS100010) |
| E. coli Selection: | Ampicillin (100 ug/mL) |



[View online »](#)

ORF Nucleotide Sequence:

>RG239287 representing NM_001291831.
 Blue=ORF Red=Cloning site Green=Tag(s)

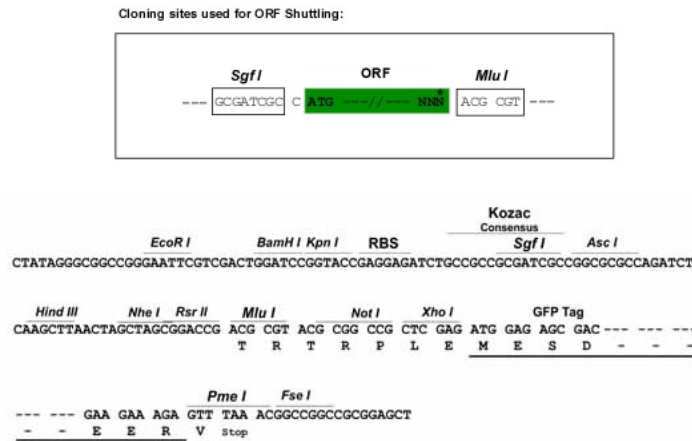
```
GCTCGTTTAGTGAACCGTCAGAATTTTGTAAACGACTCACTATAGGGCGGCCGGGAATTCGTGACTG
GATCCGGTACCGAGGAGATCTGCCGCCCGCATCGCC
ATGTCCTCCACCGTGAACAACGGGGCGGCCAGCATGCAGTCCACACCCGACGCCGGAACGGCTTCCCG
CAGCCAGCTCCTCCTCGGGACCTGGCCGCGGGAAGAGAGCTGCGCGCCGCGGAGCCGGGCCTG
GTGAAGCGCGCACCGGAGATCCTGGACCACGAGCGCAAGCGCGGGTGGAGCTCAAGTGCATGGAG
CTGCAGGAGATGATGGAGGAGCAGGGATTTCGGAGGAGGATTCGGCAGAAAGTGGGGACATTCGG
CAGATGCTGATGGAGAAGGAGGGAGTGCTCACCAGGGAGGACCGCCTGGGGGCCACATTGTGGCGGAG
ACCCCGCGGCTGACCGAGGGCGCTGAGCCGGGCTGGAGTACGCGCCTTTGACGATGACGACGGCCCA
GTGGACTGTGACTGCCCGCCTCCTGCTACCGCGGCCACCGGGTACAGGACCAAGCATTGGTCTAGC
AGCTCGGCATCGCCCCCTCCAAGAAAAAGAAGAAAAAGAAAGGGCGGCCACCGGAGAAGCCGAAAAAG
AGGAGACTGGAGTCCGAATGCAGCTGTGGGAGCTCCTACCCCTCCGCAAGAAGAAGAAGAGTGTGAAG
AAGCATCGCCGAGACAGTCTGATTCTGGGTCCCGGAGGAAGAGACGGCACAGATCTCGAAGCTCCAAG
TGCAAAAGAAAAGAGAAGAAAGAGAAGAGAGGCCTCACACAGAGTCCCAGCCGGAGGTCTCAT
CGCCATAGCAGTGGCAGCTCCCACAGCCCTCCCTCTCCTCCACTACAGTGATTCCAGATCTCCCAGC
AGGCTGAGCCCCAAGCACCGAGACGAAGGGCGAAAGACGGGCAGCCAGCGGTCCAGCGGAAGCCGGTCCG
CCTTCCCCGTGCGGCGGCAGCGGATGGGGTCCGCCACGCGGAACGGCGGCAGCGGGCAGCGGAGCGGA
GCGCACGGGGGCCGCCCGGCTCGGCGCACAGCCCGCCGATAAGCCAGCTCGCCCTCGCCAGGGTC
CGTGACAAGGCGGCGCCGCCACCCACGCGCCCGCGCGGGGAAGGAGAGCCCGAGCCCGCGCTCG
AGCGGGCGGCGCTCGCGTCTCGCGTCCGCGCCCCCGCGAGGGTCCCGGCGCCCCCGCGCCGCGGCG
CCCCCGGGGCTCGTCGCGCTCGCTCAGCAGGGCCCGTCCAGCAGGACTCCGCGAGCGCCGCGGC
GCCCGCGCCCCGGGCCGAGCCGGCTCTGAGCGAGGCCACGGCGGACACGGGAAACGGGCCAAGGAG
CGGCCCGCGCGCGCGGCCCGCAGCACCTCTCCGTCCCGGGCGCGCACGGCCGGCGGGCGGCCCA
GAAGGGAAGAGCTCGTCGCGCAGCCCCGGCCCGCACCCCGCTCCTGGAGCTCCAGCCGCTCGCCCTCC
AAATCTCGCTCGCGCTCTGCGGAGAAGCGGCCCAAGCCAGCCGCTCGCCGTGCGCCAAAGAAGCCC
CTCAGCCGGGACAAGGACGGCGAGGGCCGCGCAAGGCACTCTGAGGCCGAGGCCACCCGCGCCGGCGC
CGCTCCCGCAGCTACTCGCCATCCGCAAGCGGCGCCGGACTCGCCAAGCTTCATGGAGCCGGGCGC
ATCACCAGGTCCAGCCTGCTGAGTGGCCTGTGGTCAGCCTGGGGCCAGGCGGACCCCTCTGCACAGGC
TGCTGGGAGATGCCCAAGCGCCGCAAGCGTCTATTCCATACTACCGGCCAGCCCTCTCTCCTC
CAGCTGCTTGAGCAGCGACTACTCGACCCGAGCCACAGCCGAGCCCCAGCCCCGGCCACAGCCACGG
GAGCTACAGCAGTCGAGCCATGGGACCCGAGCCGACAGCAGCCCTCGAGGACCCCGAGTCCCGAG
CTACCACAGCCGGAGCAGCTC
ACGCGTACGCGGCCGCTCGAG - GFP Tag - GTTTAAAC
```

Protein Sequence: >Peptide sequence encoded by RG239287
 Blue=ORF Red=Cloning site Green=Tag(s)

MSSTVNNGAASMQSTPDAANGFPQPSSSSGTWPRAEEELRAAEPGLVKRAHREILDHERKRRVELKCMELQEMMEEQGYSEEEIRQKVGTFRQMLMEKEGVL TREDRPGGHIVAETPRLTEGAEPGLEYPFDDDDGPDVDCDCPASCYRGHRGYRTKHWSSSSASPPPKKKKKKGGHRRSRKKRRLSESCSGSSSPLRKKKKSVKKRRDRSDSGSRKRRHRSSSKCKRKEKNKEKKRPHTESPGRSRHRHSSGSSHSPSLSSHYSDSRSPSRLSPKHRDEGRKTGSQRSSGSRSPSPSGSGWGSQPQRNGGSGQRSGAHGGRPGSAHSPDPKPSPPRV RDKAAAAAPTTPARGKESPPRSAPSSQGRGGAAGGAGRRRRRRRRRRSRSSASAPRRRRRRRPPAPPRGSSRSLSRARSSSDSGSRGAPGPGPEPGERGHGGHGRAKERPPRARPASTSPSPGAHGRGGPEGKSSSRSPGPHRSWSSSRSPSKRSRSAEKRPHSPSRSPKPKPLSRDKDGEGRARHSEAEATRARRRSRSYSPIRKRRRDSPSFMEPRRITRSSL SGLWSAWGPGPLCTGCLGDAQRPQASYSILPAQPLFLLQLLEQRLLDPEPQPQPQPRPQPRELQQSQPWPDPDTQPLEDPQS QLPQPEQL
TRTRPLEME**SD**ESGLPAMEIECRITGTLNGVEFELVGGGEGTPEQGRMTNKMKSTKGALTFSPYLLSHVMGYGFYHFGTYPSGYENPFLHAINNGGYTNTRIEKYEDGGVLHVSFSYRYEAGRVIGDFKVMGTGFPEDSVIFTDKIIRSNAIVEHLHPMGDNDLDGSFTRTFLRDGGYYSSVVD SHMHFKSAIHP SILQNGGPMFAFRRVEEDHSNTELGIVEYQHAFKTPDADAGEERV

Restriction Sites: SgfI-MluI

Cloning Scheme:



ACCN: NM_001291831

ORF Size: 2022 bp

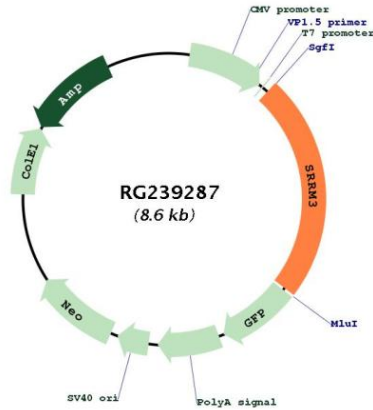
OTI Disclaimer: The molecular sequence of this clone aligns with the gene accession number as a point of reference only. However, individual transcript sequences of the same gene can differ through naturally occurring variations (e.g. polymorphisms), each with its own valid existence. This clone is substantially in agreement with the reference, but a complete review of all prevailing variants is recommended prior to use. [More info](#)

OTI Annotation: This clone was engineered to express the complete ORF with an expression tag. Expression varies depending on the nature of the gene.

Components: The ORF clone is ion-exchange column purified and shipped in a 2D barcoded Matrix tube containing 10ug of transfection-ready, dried plasmid DNA (reconstitute with 100 ul of water).

RefSeq: NM_001291831.2
 RefSeq Size: 3721 bp
 RefSeq ORF: 2025 bp
 Locus ID: 222183
 Cytogenetics: 7q11.23
 MW: 74.6 kDa

Product images:



Circular map for RG239287