

Product datasheet for **RG239285**

FIGNL1 (NM_001287494) Human Tagged ORF Clone

Product data:

| | |
|---------------------------|--|
| Product Type: | Expression Plasmids |
| Product Name: | FIGNL1 (NM_001287494) Human Tagged ORF Clone |
| Tag: | TurboGFP |
| Symbol: | FIGNL1 |
| Mammalian Cell Selection: | Neomycin |
| Vector: | pCMV6-AC-GFP (PS100010) |
| E. coli Selection: | Ampicillin (100 ug/mL) |



[View online »](#)

ORF Nucleotide Sequence:

>RG239285 representing NM_001287494.
 Blue=ORF Red=Cloning site Green=Tag(s)

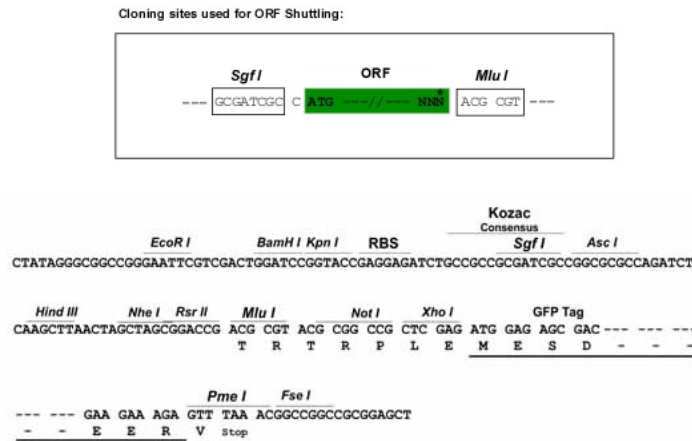
```
GCTCGTTTAGTGAACCGTCAGAATTTTGTAAACGACTCACTATAGGGCGGCCGGGAATTCGTGACTG
GATCCGGTACCGAGGAGATCTGCCGCCCGCATCGCC
ATGCAGACCTCCAGCTCTAGATCTGTGCACCTGAGTGAATGGCAGAAGAATTACTTCGCAATTACATCT
GGCATATGTACCGGACCGAAGGCAGATGCATACCGTGCACAGATATTACGCATTTCAGTATGCATGGGCA
AACTCTGAGATTTCCAGGTCTGTGCTACCAAACCTGTTCAAAAAATATGCAGAGAAATATTCTGCAATT
ATTGATCTGACAATGTTGAATCTGGGTTGAATAATTATGCAGAAAAACATTTTAACTTTGGCAGGATCT
CAACAAACAGATAGTGACAAGTGGCAGTCTGGATTGTCAATAAATAATGTTTTCAAAATGAGTAGTGTA
CAGAAGATGATGCAAGCTGGCAAAAAATCAAAGACTCTCTGTTGGAACCTGCTCTTGCATCAGTGGTA
ATCCATAAGGAGGCCACTGTCTTTGATCTTCTAAATTTAGTGTTTGGTAGTTCTCAAGAGAGTGAC
TCATTACCTAACTCAGCTCATGATCGAGACCGGACCAAGACTTCCCGGAGAGCAATCGTTTGAAACTC
CTTCAGAAATGCCAGCCACCTATGGTGACTAACACTGCTAGGACTTGCCTACATTTCTCAGCACCTGTA
GGTGAGTCAGCTACTGCAAAATTCATGTCACACCATTGTTTGGAAATGTCAAAAAGGAAAAATCACAGC
TCTGCAAAAAGAAAACATAGGACTTAATGTGTTCTTATCTAACCAGTCTTGTTCCTGCTGCCTGTGAA
AATCCACAGAGGAAGTCTTTTTATGGTTCTGGCACCATTGATGCACTTTCCAATCCAATACTGAATAAG
GCTTGTAGTAAAACAGAAGATAATGGCCAAAAGGAGGATAGCAGCCTGCCTACATTTAAACTGCAAAA
GAACAATTATGGGTAGATCAGCAAAAAAGTACCACCAACCTCAGCGTGCATCAGGGTCTTCATATGGT
GGTGTA AAAAAGTCTCTAGGAGCTAGTAGATCCCGAGGGATACTTGAAAAGTTTGTTCCTCTATACCC
AAGCAAGATGGGGAGAGCAGAAATGGAGGAATGCAATGTAAGCCTTATGGGGCAGGACCTACAGAACCA
GCACATCCAGTTGATGAGCGTCTGAAGAACTTGGAGCCAAAGATGATTGAACTTATTATGAATGAGATT
ATGGATCATGGACCTCCAGTAAATGGGAAGATATTGCAGGAGTAGAATTTGCTAAAGCCACCATAAAG
GAAATAGTTGTGTGGCCATGTTGAGGCCAGACATCTTTACTGGTTTAAGGGGACCCCTAAAGGAATT
TTGCTCTTTGGTCTCTGGGACTGGTAAAACCTAATTGGCAAGTGCATTGCTAGTCAGTCTGGGGCA
ACATTCTTTAGCATCTCTGCTTCATCCTTAACTTCTAAATGGGTAGGTGAGGGGGAGAAAAATGGTCCGT
GCATTGTTTGCTGTTGCAAGGTGTCAGCAACCAGCTGTGATATTTATTGACGAAATTGATTCCTTGTTA
TCTCAACGGGGAGATGGTGAGCATGAATCTTCTAGAAGGATAAAAAACAGAATTTTATGTTCAATTAGAT
GGAGCAACAACATCTTCTGAAGATCGTATCCTAGTGGTGGGAGCAACAAATCGGCCACAAGAAATTGAT
GAGGCTGCCCGGAGAAGATTGGTAAAAGGCTTTATATCCCTCCAGAAAGCTTCAGCCAGGAAACAG
ATAGTAATTAATCTAATGTCAAAGAGCAGTGTTCCTCAGTGAAGAAGAAATTGAACAGATTGTACAG
CAGTCTGATGCGTTTTAGGAGCAGACATGACACAGCTTTGCAGGGAGGCTTCTCTTGGTCTATTGCGC
AGTTTACAAACTGCTGACATTGCTACCATAACACCGGATCAAGTTCGACCCATAGCTTACATTGATTTT
GAAAATGCTTTTAGAACTGTGCGACCTAGTGTTTCTCAAAGATTTAGAGCTTTATGAAAACCTGGAAAC
AAAACCTTTGGTTGTGGAAG
ACGCGTACGCGGCCGCTCGAG – GFP Tag – GTTTAAAC
```

Protein Sequence: >Peptide sequence encoded by RG239285
 Blue=ORF Red=Cloning site Green=Tag(s)

MQTSSRSVHLSWQKNYFAITSGICTGPKADAYRAQILRIQYAWANSEISQVCATKLFKKYAEKYSAI
 IDSDNVESEGLNNAENILTAGSQQTDSDKWQSGLSINNVFKMSSVQKMMQAGKKFKDSLLEPALASVV
 IHKEATVFDLPKFSVCGSSQESDSLNSAHDRDRTQDFPESNRLKLLQNAQPPMVTNTARTCPTFSAPV
 GESATAKFHVTPPLFGNVKKNHSSAKENIGLVFLSNQSCFPAACENPQRKSFYGSSTIDALSNPILNK
 ACSKTEDNGPKEDSSLPTFKTAKEQLWVDQKKYHQQRASGSSYGGVKKSLGASRSRILGKFVPPIP
 KQDGGEQNGMQCKPYGAGPTEPAHPVDERLKNLEPKMIELIMNEIMDHGPPVNWEDIAGVEFAKATIK
 EIVVWMLRPDI FTGLRGPCKGILLFGPPGTGKTLIGKCIASQSGATFFSISASSLTSKWVGEKEMVR
 ALFAVARCQQPAVIFIDEIDSLLSQRGDGEHSSRIKTEFLVQLDGATTSSDRILVVGATNRPQEID
 EAARRRLVKRLYIPLPEASARKQIVINLMSKEQCCLSEEEIEQIVQSDAFSGADMTQLCREASLGPIR
 SLQTADIATITPDQVRPIAYIDFENAFRTV RPSVSPKDLELYENWNKTFGCGK
 TRTRPLEMESDESGLPAMEIECRITGTLNGVEFELVGGGEGTPEQGRMTNKMKSTKGALTFSPYLLSHV
 MGYGFYHFGTYPSTYENPFLHAINNGGYTNTRIEKYEDGGVLHVSFSYRYEAGRVIGDFKVMGTGFPED
 SVIFTDKIIRS NATVEHLHPMGDNDLDGSFTRTFLRDGGYYSSVVD SHMHFKSAIHP SILQNGGPMFA
 FRRVEEDHSNTELGIVEYQHAFKTPDADAGEERV

Restriction Sites: SgfI-MluI

Cloning Scheme:



ACCN: NM_001287494

ORF Size: 2022 bp

OTI Disclaimer: The molecular sequence of this clone aligns with the gene accession number as a point of reference only. However, individual transcript sequences of the same gene can differ through naturally occurring variations (e.g. polymorphisms), each with its own valid existence. This clone is substantially in agreement with the reference, but a complete review of all prevailing variants is recommended prior to use. [More info](#)

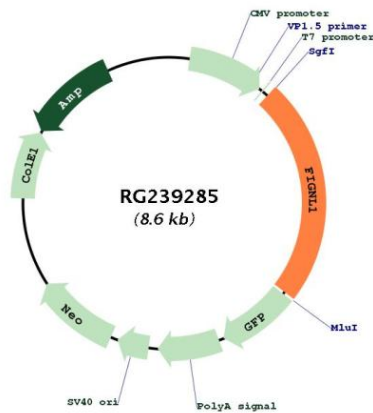
OTI Annotation: This clone was engineered to express the complete ORF with an expression tag. Expression varies depending on the nature of the gene.

Components: The ORF clone is ion-exchange column purified and shipped in a 2D barcoded Matrix tube containing 10ug of transfection-ready, dried plasmid DNA (reconstitute with 100 ul of water).

RefSeq: [NM_001287494.3](#)
 RefSeq Size: 3381 bp
 RefSeq ORF: 2025 bp
 Locus ID: 63979
 UniProt ID: [Q6PIW4](#)
 Cytogenetics: 7p12.2
 MW: 74.1 kDa

Gene Summary: This gene encodes a member of the AAA ATPase family of proteins. The encoded protein is recruited to sites of DNA damage where it plays a role in DNA double-strand break repair via homologous recombination. This protein has also been shown to localize to the centrosome and inhibit ciliogenesis, and may regulate the proliferation and differentiation of osteoblasts. [provided by RefSeq, Oct 2016]

Product images:



Circular map for RG239285