

## Product datasheet for **RG239283**

### **FIGNL1 (NM\_001287492) Human Tagged ORF Clone**

#### **Product data:**

Product Type:	Expression Plasmids
Product Name:	FIGNL1 (NM_001287492) Human Tagged ORF Clone
Tag:	TurboGFP
Symbol:	FIGNL1
Mammalian Cell Selection:	Neomycin
Vector:	pCMV6-AC-GFP (PS100010)
E. coli Selection:	Ampicillin (100 ug/mL)



[View online »](#)

**ORF Nucleotide Sequence:**

>RG239283 representing NM\_001287492.  
 Blue=ORF Red=Cloning site Green=Tag(s)

```

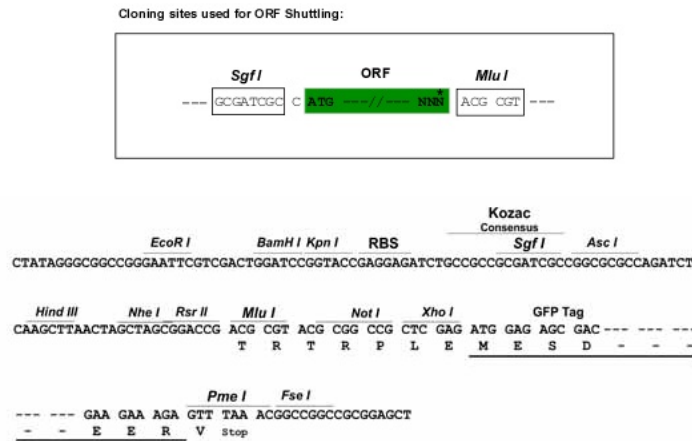
GCTCGTTTAGTGAACCGTCAGAATTTTGTAAACGACTCACTATAGGGCGGCCGGGAATTCGTGACTG
GATCCGGTACCGAGGAGATCTGCCGCCCGCATCGCC
ATGCAGACCTCCAGCTCTAGATCTGTGCACCTGAGTGAATGGCAGAAGAATTACTTCGCAATTACATCT
GGCATATGTACCGGACCGAAGGCAGATGCATACCGTGCACAGATATTACGCATTCACTATGCATGGGCA
AACTCTGAGATTTCCAGGTCTGTGCTACCAAACCTGTTCAAAAAATATGCAGAGAAATATTCTGCAATT
ATTGATTCTGACAATGTTGAATCTGGGTTGAATAATTATGCAGAAAAACATTTTAACTTTGGCAGGATCT
CAACAAACAGATAGTGACAAGTGGCAGTCTGGATTGTCAATAAATAATGTTTTCAAAATGAGTAGTGTA
CAGAAGATGATGCAAGCTGGCAAAAAATCAAAGACTCTCTGTTGGAACCTGCTCTTGCATCAGTGGTA
ATCCATAAGGAGGCCACTGTCTTTGATCTTCTAAATTTAGTGTTTGTGGTAGTTCTCAAGAGAGTGAC
TCATTACCTAACTCAGCTCATGATCGAGACCGGACCCAAGACTTCCCGGAGAGCAATCGTTTGAAACTC
CTTCAGAAATGCCAGCCACCTATGGTGACTAACACTGCTAGGACTTGTCTACATTTCTCAGCACCTGTA
GGTGAGTCAGCTACTGCAAAATTCATGTCACACCATTGTTTGGAAATGTCAAAAAGGAAAAATCACAGC
TCTGCAAAAAGAAAACATAGGACTTAATGTGTTCTTATCTAACCAGTCTTGTTTTCTGCTGCCTGTGAA
AATCCACAGAGGAAGTCTTTTTATGGTTCTGGCACCATTGATGCACTTTCCAATCCAATACTGAATAAG
GCTTGTAGTAAAACAGAAGATAATGGCCAAAAGGAGGATAGCAGCCTGCCTACATTTAAACTGCAAAA
GAACAATTATGGGTAGATCAGCAAAAAAGTACCACCAACCTCAGCGTGCATCAGGGTCTTCATATGGT
GGTGTA AAAAAGTCTCTAGGAGCTAGTAGATCCCGAGGGATACTTGAAAAGTTTGTCTCTCTATACCC
AAGCAAGATGGGGAGAGCAGAATGGAGGAATGCAATGTAAGCCTTATGGGGCAGGACCTACAGAACCA
GCACATCCAGTTGATGAGCGTCTGAAGAACTTGGAGCCAAAGATGATTGAACTTATTATGAATGAGATT
ATGGATCATGGACCTCCAGTAAATGGGAAGATATTGCAGGAGTAGAATTTGCTAAAGCCACCATAAAG
GAAATAGTTGTGTGGCCATGTTGAGGCCAGACATCTTTACTGGTTTAAGGGGACCCCTAAAGGAATT
TTGCTCTTTGGTCTCTGGGACTGGTAAAACCTAATTGGCAAGTGCATTGCTAGTCAGTCTGGGGCA
ACATTCTTTAGCATCTCTGCTTCATCTTAACTTCTAAATGGGTAGGTGAGGGGGAGAAAATGGTCCGT
GCATTGTTTGTGTTGCAAGGTGTCAGCAACCAGCTGTGATATTTATTGACGAAATTGATTCCTTGTTA
TCTCAACGGGGAGATGGTGAGCATGAATCTTCTAGAAGGATAAAAACAGAATTTTATGTTCAATTAGAT
GGAGCAACAACATCTTCTGAAGATCGTATCCTAGTGGTGGGAGCAACAAATCGGCCACAAGAAATTGAT
GAGGCTGCCCGGAGAAGATTGGTAAAAGGCTTTATATCCCTCCAGAAAGCTTCAGCCAGGAAACAG
ATAGTAATTAATCTAATGTCAAAGAGCAGTGTTCCTCAGTGAAGAAGAAATTGAACAGATTGTACAG
CAGTCTGATGCGTTTTAGGAGCAGACATGACACAGCTTTGCAGGGAGGCTTCTCTTGGTCTATTGCGC
AGTTTACAAACTGCTGACATTGCTACCATAACACCGGATCAAGTTCGACCCATAGCTTACATTGATTTT
GAAAATGCTTTTAGAACTGTGCGACCTAGTGTTTCTCAAAGATTTAGAGCTTTATGAAAACGGAAAC
AAAACCTTTGGTTGTGGAAG
ACGCGTACGCGGCCGCTCGAG – GFP Tag – GTTTAAAC
  
```

**Protein Sequence:** >Peptide sequence encoded by RG239283  
 Blue=ORF Red=Cloning site Green=Tag(s)

MQTSSRSVHLSWQKNYFAITSGICTGPKADAYRAQILRIQYAWANSEISQVCATKLFKKYAEKYSAI  
 IDSDNVESEGLNNAENILTAGSQQTDSKQWQSGLSINNVFKMSSVQKMMQAGKKFKDLSLEPALASVV  
 IHKEATVFDLPKFSVCGSSQESDSLNSAHRDRRTQDFPESNRLLKLLQNAQPPMVTNTARTCPTFSAPV  
 GESATAKFHVTPPLFGNVKKNHSSAKENIGLVFLSNQSCFPAACENPQRKSFYGSSTIDALSNPILNK  
 ACSKTEDNGPKEDSSLPTFKTAKEQLWVDQKKYHQQRASGSSYGGVKKSLGASRSRILGKFFVPPIP  
 KQDGGEQNGMQCKPYGAGPTEPAHPVDERLKNLEPKMIELIMNEIMDHGPPVNWEDIAGVEFAKATIK  
 EIVVWMLRPDI FTGLRGPCKGILLFGPPGTGKTLIGKCIASQSGATFFSISASSLTSKWVGEKEMVR  
 ALFAVARCQQPAVIFIDEIDSLLSQRGDGEHSSRRIKTEFLVQLDGATTSSDRILVVGATNRPQEID  
 EAARRRLVKRLYIPLPEASARKQIVINLMSKEQCCLSEEEIEQIVQSDAFSGADMTQLCREASLGPIR  
 SLQTADIATITPDQVRPIAYIDFENAFRTVSPKDLLEYENWNKTFGCGK  
 TRTRPLEMESDESGLPAMEIECRITGTLNGVEFELVGGEGTPEQGRMTNKMSTKGALTFSPYLLSHV  
 MGYGFYHFGTYPSTYENPFLHAINNGGYTNTRIEKYEDGGVLHVSFSYRYEAGRVIGDFKVMGTGFPED  
 SVIFTDKIIRSNAIVEHLHPMGDNDLDGSFTRTFLRDGGYYSSVVDSHMHFKSAIHPISILQNGGPMFA  
 FRRVEEDHSNTELGIVEYQHAFKTPDADAGEERV

**Restriction Sites:** SgfI-MluI

**Cloning Scheme:**



**ACCN:** NM\_001287492

**ORF Size:** 2022 bp

**OTI Disclaimer:** The molecular sequence of this clone aligns with the gene accession number as a point of reference only. However, individual transcript sequences of the same gene can differ through naturally occurring variations (e.g. polymorphisms), each with its own valid existence. This clone is substantially in agreement with the reference, but a complete review of all prevailing variants is recommended prior to use. [More info](#)

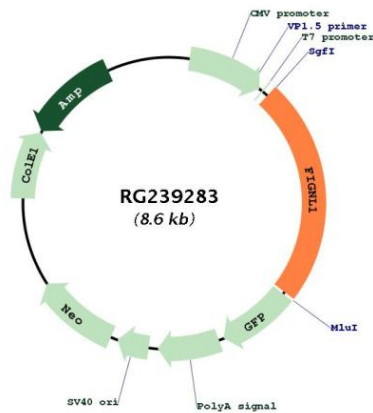
**OTI Annotation:** This clone was engineered to express the complete ORF with an expression tag. Expression varies depending on the nature of the gene.

**Components:** The ORF clone is ion-exchange column purified and shipped in a 2D barcoded Matrix tube containing 10ug of transfection-ready, dried plasmid DNA (reconstitute with 100 ul of water).

RefSeq: [NM\\_001287492.3](#)  
 RefSeq Size: 3992 bp  
 RefSeq ORF: 2025 bp  
 Locus ID: 63979  
 UniProt ID: [Q6PIW4](#)  
 Cytogenetics: 7p12.2  
 MW: 74.1 kDa

**Gene Summary:** This gene encodes a member of the AAA ATPase family of proteins. The encoded protein is recruited to sites of DNA damage where it plays a role in DNA double-strand break repair via homologous recombination. This protein has also been shown to localize to the centrosome and inhibit ciliogenesis, and may regulate the proliferation and differentiation of osteoblasts. [provided by RefSeq, Oct 2016]

**Product images:**



Circular map for RG239283