

Product datasheet for **RG239278**

ZNF133 (NM_001282996) Human Tagged ORF Clone

Product data:

Product Type:	Expression Plasmids
Product Name:	ZNF133 (NM_001282996) Human Tagged ORF Clone
Tag:	TurboGFP
Symbol:	ZNF133
Synonyms:	pHZ-13; pHZ-66; ZNF150
Mammalian Cell Selection:	Neomycin
Vector:	pCMV6-AC-GFP (PS100010)
E. coli Selection:	Ampicillin (100 ug/mL)



[View online »](#)

ORF Nucleotide Sequence:

>RG239278 representing NM_001282996.
 Blue=ORF Red=Cloning site Green=Tag(s)

```
GCTCGTTTAGTGAACCGTCAGAATTTTGTAAACGACTCACTATAGGGCGGCCGGGAATTCGTCGACTG
GATCCGGTACCGAGGAGATCTGCCGCCCGCATCGCC
ATGGCACACATGGCATTCAGGGATGTGGCTGTGGATTTCACCCAGGATGAGTGGAGGCTGCTGAGCCCT
GCTCAAAGGACTCTGTACAGAGAGGTGATGCTGGAGAACTACAGCAACCTGGTCTACTGGGAATTTCA
TTTTCTAAACCAGAACTCATCACCAGCTGGAGCAAGGGAAAGAGACCTGGAGAGAGGAAAAAAAAATGT
TCACCGGCAACCTGTCCAGATCATCAAGAATATGGAAACAACTGTGACCTACAGAAAGAAGCAGATCCA
GAGCCAGAGCTCTACCTCGATCCTTTCTGCCCTCCGGTTTCTCCAGTCAGAAATCCCCATGCAGCAT
GTGCTGTGTAATCATCCCCCTGGATCTTCACATGCTTGTGTGCAGAAGGTAACATCCAGCCTGGGGAT
CCGGGCCAGGGGACCAGGAGAAGCAGCAACAAGCCTCTGAGGGGAGACCCTGGAGTGATCAAGCAGAA
GGTCTGAGGGAGAAGGTGCCATGCCTTTGTTTGAAGAACCAAGAAAAGGACTCTGGGAGCGTTCTCC
AGGCCACCCAGAGGCAGCCAGTCAGCTCTCGGAACGGCCTCAGAGGGTGGAGTTAGAAGCCAGCCCA
GCTCAGACAGGGAACCTGAGGAAACAGACAAATTGTTGAAGAGGATAGAAGTCTTAGGATTTGGAACA
GTCAACTGTGGAGAGTGTGGACTGAGCTTCAGCAAGATGACAAACCTGCTCAGTCACCAGCGGATACAC
TCAGGGGAGAAGCCCTACGTGTGTGGGGTATGTGAGAAGGGCTTCAGCCTAAAGAAGAGCCTCGCCAGA
CACCAGAAGGCACACTCGGGGGAGAAGCCAATTGTGTGCAGGGAGTGTGGACGAGGCTTTAACGGGAAG
TCAACGCTAATCATACACGAACGGACACACTCCGGTGAGAAACCTTACATGTGCAGTGAGTGTGGGCGA
GGCTTCAGCCAGAAGTCAAACCTCATCATACACAGAGGACACACTCAGGGGAAAAGCCTTACGTGTGC
CGGGAATGTGGCAAAGGCTTCAGCCAGAAGTCAGCTGTCGTGAGACACCAGAGGACACACTTGGAGGAG
AAGACCATCGTGTGCAGTGACTGTGGCCTGGGCTTCAGCGACAGGTCAAACCTCATCTCCACCAGAGG
ACGCACTCTGGGAGAAGCCCTACGCCTGCAAGGAGTGTGGCGATGCTTCAGGCAGAGGACCACCTT
GTCAACCACCAGAGGACACACTCAAAGGAGAAGCCCTATGTGTGCGGGGTGTGTGGGCACAGCTTCAGC
CAGAAATCAACCCCTATCTCTCACAGCGGACACACACTGGGGAGAAGCCGTATGTTTGTGGGGTGTGT
GGGCGAGGCTTTAGTCTCAAGTCACACCTCAACAGACACCAGAACATACACTCAGGAGAGAAGCCCATT
GTGTGCAAGGACTGTGGCCGGGGCTTCAGCCAGCAATCCAACCTCATCAGACACCAGAGGACGCACTCA
GGCAGAAAGCCCATGGTGTGTGGGGAGTGCGGGCGAGGCTTCAGCCAGAAGTCAAACCTTGTGCACAC
CAGAGGACGCACTCAGGGGAGAGCCGTATGTGTGCCAGAGTGCGGGCGAGGCTTAGCCACCAGGCC
GGTCTCATCAGGCACAAGCGGAAGCACTCGAGGGAGAAGCCCTACATGTGCAGGCAGTGTGGACTGGCC
TTTGGCAATAAGTCAGCTCTAATTACACACAAGCGGGCTCACTCGGAAGAGAAGCCTTGTGTGTGCAGA
GAGTGTGGCCAAGGCTTTCTCCAAAAGTCACACCTCACCTTACATCAAATGACACATACGGGGGAGAAG
CCATATGTGTGCAAGACGTGTGGCGGGGCTTCAGCCTCAAGTCTCACCTCAGCAGACACAGGAAGACC
ACGTCTGTCCACCACAGACTGCCAGTGCAGCCGACCCTGAGCCGTGTGCAGGGCAACCTTCGGATTC
TTATACTCTCTC
ACGCGTACGCGGCCGCTCGAG – GFP Tag – GTTTAAAC
```

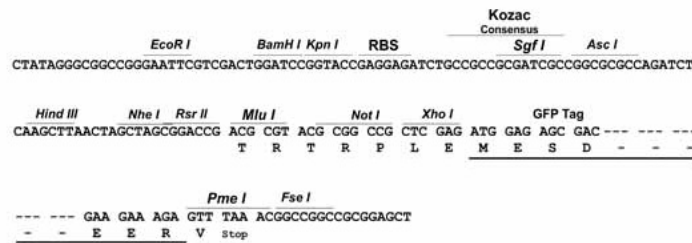
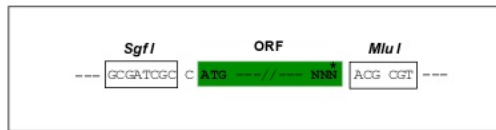
Protein Sequence: >Peptide sequence encoded by RG239278
 Blue=ORF Red=Cloning site Green=Tag(s)

MAHMAFRDVAVDFTQDEWRLLSPAQRTL YREVMLENYSNLVSLGISFSKPELITQLEQGGKETWREEKCC
 SPATCPDHQEYGNNDLQKEADPEPEL YLDPFCPPGFSSQKFPMQHVL CNHPPWIFTCLCAEGNIQPGD
 PGPGDQEKQQQASEGRPWSDAQEGPEGEGAMPLFGRTKKRTL GAF SRPPQRQPVSSRNGLRGVELEASP
 AQTGNPEETDKLLKRIEVLGFGTVNCGEGLSFSKMTNLLSHQRIHSGEKPYVCGVCEKGFSLKKSRLAR
 HQKAHSGEKPIVCRECGRGFNRKSTLI IHERTHSGEKPYMCSECGRGSQKSNLIIHQRTHSGEKPYVC
 RECCKGFSQKSAVVRHQRTHL EEKTIVCSDCGLGFSDRSNLISHQRTHSGEKPYACKECGRCFRQRTTL
 VNHQRTHSKEKPYVCGVCGHSFSQNSTLISHRRTHTGEKPYVCGVCGRGSFKSHLNRHQNIHSGEKPI
 VCKDCGRGFSQKSNLIRHQRTHSGEKPYVCGEGRGFSQKSNLVAHQRTHSGERPYVCRECGRGFSHQ
 GLIRHKRHSREKPYMCRQCGLGFGNKSALITHKRAHSEEKPCVCRECGGFLQKSHLTLHQMTHTGEK
 PYVCKTCGRGFSKSHLSRHRKTTSVHRLPVQPDPEPCAGQPSDSL YSL
 TRTRPLEMESDEGLPAMEIECRITGTLNGVEFELVGGEGTPEQGRMTNKMSTKGALTFSPYLLSHV
 MGYGFYHFGTYPGYPNPLHA INNGGYTNTRIEKYEDGGVLHVSFSYRYEAGRVIGDFKVMGTGFPED
 SVIFTDKIIRS NATVEHLHPMGDNDLDGSFTRTFLRDGGYSSVVD SHMHFKSAIHP SILQNGGPMFA
 FRRVEEDHSNTELGIVEYQHAFKTPDADAGEERV

Restriction Sites: SgfI-MluI

Cloning Scheme:

Cloning sites used for ORF Shuttling:



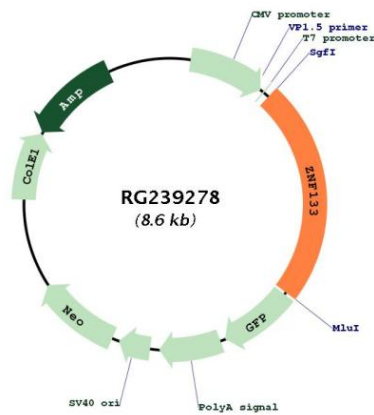
ACCN: NM_001282996

ORF Size: 2013 bp

OTI Disclaimer: The molecular sequence of this clone aligns with the gene accession number as a point of reference only. However, individual transcript sequences of the same gene can differ through naturally occurring variations (e.g. polymorphisms), each with its own valid existence. This clone is substantially in agreement with the reference, but a complete review of all prevailing variants is recommended prior to use. [More info](#)

OTI Annotation: This clone was engineered to express the complete ORF with an expression tag. Expression varies depending on the nature of the gene.

Components:	The ORF clone is ion-exchange column purified and shipped in a 2D barcoded Matrix tube containing 10ug of transfection-ready, dried plasmid DNA (reconstitute with 100 ul of water).
RefSeq:	NM_001282996.2
RefSeq Size:	2610 bp
RefSeq ORF:	2016 bp
Locus ID:	7692
Cytogenetics:	20p11.23
Protein Families:	Transcription Factors
MW:	75.9 kDa
Gene Summary:	May be involved in transcriptional regulation as a repressor.[UniProtKB/Swiss-Prot Function]

Product images:


Circular map for RG239278