

## Product datasheet for **RG239277**

### **MCAK (KIF2C) (NM\_001297656) Human Tagged ORF Clone**

#### **Product data:**

Product Type:	Expression Plasmids
Product Name:	MCAK (KIF2C) (NM_001297656) Human Tagged ORF Clone
Tag:	TurboGFP
Symbol:	MCAK
Synonyms:	CT139; KNSL6; MCAK
Mammalian Cell Selection:	Neomycin
Vector:	pCMV6-AC-GFP (PS100010)
E. coli Selection:	Ampicillin (100 ug/mL)



[View online »](#)

**ORF Nucleotide Sequence:**

>RG239277 representing NM\_001297656.  
 Blue=ORF Red=Cloning site Green=Tag(s)

```

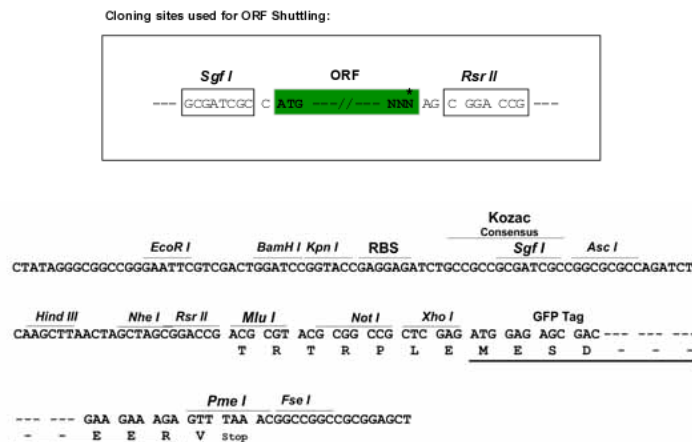
GCTCGTTTAGTGAACCGTCAGAATTTTGTAAACGACTCACTATAGGGCGGCCGGGAATTCGTGCGACTG
GATCCGGTACCGAGGAGATCTGCCGCCGCGATCGCC
ATGATTGATTTTGATGATGTGGCTGCAATAAACCCAGAACTCTTACAGCTTCTTCCCTTACATCCGAAG
GACAATCTGCCCTTGACAGAAAATGTAACAATCCAGAAACAAAAACGGAGATCCGTCAACTCCAAAATT
CCTGCTCCAAAAGAAAGTCTTGAAGCCGCTCCACTCGCATGTCCACTGTCTCAGAGCTTCGCATCACG
GCTCAGGAGAATGACATGGAGGTGGAGCTGCCTGCAGCTGCAAACCTCCCGCAAGCAGTTTTCAGTTCCT
CCTGCCCCACTAGGCCCTTCTGCCCTGCAGTGGCTGAAATACCATTGAGGATGGTCAGCGAGGAGATG
GAAGAGCAAGTCCATTCCATCCGAGGCAGCTCTTCTGCAAACCCTGTGAACTCAGTTCGGAGGAAATCA
TGTCTTGTGAAGGAAGTGAAAAAATGAAGAACAAGCGAGAAGAGAAGAAGGCCCAAGCTGAAATG
AGAATGAAGAGAGCTCAGGAGTATGACAGTAGTTTTCAAACGGGAATTTGCCGAATGATTAAGAA
TTTCGGGCTACTTTGGAATGTCATCCACTTACTATGACTGATCCTATCGAAGAGCACAGAATATGTGC
TGTGTTAGGAAACGCCACTGAATAAGCAAGAATTGGCCAAGAAAGAAATTGATGTGATTTCCATTCT
AGCAAGTGTCTCCTCTTGGTACATGAACCAAGTTGAAAGTGGACTTAACAAAGTATCTGGAGAACCAA
GCATTCTGCTTTGACTTTGCATTTGATGAAACAGCTTCGAATGAAGTTGTCTACAGGTTACAGCAAGG
CCACTGGTACAGACAATCTTTGAAGGTGAAAAAGCAACTTGTTTTGCATATGGCCAGACAGGAAGTGGC
AAGACACATACTATGGGCGGAGACCTCTCTGGAAAGCCAGAATGCATCCAAAGGGATCTATGCCATG
GCCTCCCGGGACGTCTTCTCCTGAAGAATCAACCCTGTACCGGAAGTTGGGCCTGGAAGTCTATGTG
ACATTCTCGAGATCTACAATGGGAAGCTGTTTGACCTGCTCAACAAGAAGGCCAAGCTGCGCGTGTG
GAGGACGGCAAGCAACAGGTGCAAGTGGTGGGGCTGCAGGAGCATCTGGTTAACTCTGCTGATGATGC
ATCAAGATGATCGACATGGCGAGCGCTGCAGAACCTCTGGGCAGACATTTGCCAACTCCAATTCCTCC
CGCTCCACGCGTGCTTCCAAATTATTCTTCGAGCTAAAGGGAGAATGCATGGCAAGTTCTCTTTGGTA
GATCTGGCAGGGAATGAGCGAGGCGCGGACACTTCCAGTGTGACCGGCAGACCCGCATGGAGGGCGCA
GAAATCAACAAGAGTCTCTTAGCCCTGAAGGAGTGCATCAGGGCCCTGGGACAGAACAAGGCTCACACC
CCGTTCCGTGAGAGCAAGCTGACACAGGTGCTGAGGGACTCCTTTCATTGGGGAGAACTCTAGGACTTGC
ATGATTGCCACGATCTCACCAGGCATAAGCTCCTGTGAATATACTTTAAACACCCTGAGATATGCAGAC
AGGGTCAAGGAGCTGAGCCCCACAGTGGGCCAGTGGAGAGCAGTTGATTCAAATGGAACAGAAGAG
ATGGAAGCCTGCTCTAACGGGGCGCTGATTCCAGGCAATTTATCCAAGGAAGAGGAGGAAGTCTTCC
CAGATGTCAGCTTTAACGAAGCCATGACTCAGATCAGGGAGCTGGAGGAGAAGGCTATGGAAGAGCTC
AAGGAGATCATACAGCAAGGACCAGACTGGCTTGAGCTCTCTGAGATGACCGAGCAGCCAGACTATGAC
CTGGAGACCTTTGTGAACAAAGCGGAATCTGCTCTGGCCAGCAAGCCAAGCATTCTCAGCCCTGCCA
GATGTCATCAAGGCCTTGCGCCTGGCCATGCAGCTGGAAGAGCAGGCTAGCAGACAAATAAGCAGCAAG
AAACGGCCCCAG
AGGCGACCGACGCGTACGCGGCCGCTCGAG - GFP Tag - GTTTAAAC
  
```

**Protein Sequence:** >Peptide sequence encoded by RG239277  
 Blue=ORF Red=Cloning site Green=Tag(s)

MIDFDDVAAINPELLQLLPLHPKDNLPLQENVTIQKQKRRSVNSKIPAPKESLSRSTRMSTVSELRIT  
 AQENDMEVELPAAANSRKQFVPPAPTRPSCPVAEIPLRMVSEEMEEQVHSIRGSSSANPVNSVRRKS  
 CLVKEVEKMKNKREEKKAQNSEMRMKRAQEYDSSFNWEFARMIKEFRATLECHPLTMTDPIEEHRICV  
 CVRKRPLNKQELAKKEIDVISIPSKCLLLVHEPKLKVDLTKYLENQAFCFDFAFDEATASNEVVYRFTAR  
 PLVQTI FEGGKATCFAYGQTGSGKTHTMGGDLSGKAQNASKGIYAMASRDVFLLNQPCYRKLGLEVYV  
 TFFEIYNGKLFDLLNKKAKLRVLEDGKQVQVVLQEHLVNSADDVIKIDMGSACTSGQTFANSNSS  
 RSHACFQIILRAKGRMHGKFSVLDLAGNERGADTSSADRQTRMEGAEINKSLLALKECIRALGQNKAAHT  
 PFRESKLTQVLRDSFIGENSRTCMIATISPGISSCEYTLNTRYADRVKELSPHSGPSGEQLIQMETEE  
 MEACSNGLIPGNLSKEEEEELSSQMSSFNEAMTQIRELEEKAMEELKEIIQQGPDWLELSEMTEQPDYD  
 LETFVNKAESALAQAKHFSALRDVIKALRLAMQLEEQASRQISSKKRPQ  
 SGPTRTRPLEMESDESGLPAMEIECRITGTLNGVEFELVGGGEGTPEQGRMTNKMSTKGALTFSPYLL  
 SHVMGYGFYHFGTYPSTYENPFLHAINNGGYTNTRIEKYEDGGVLVHVSFSYRYEAGRVIQDFKVMGTGF  
 PEDSVIFTDKIIRSNATVEHLHPMGDNDLDGSFTRTFLRDGGYSSVVD SHMHFKSAIHPSILQNGGP  
 MFAFRRVEEDHSNTELGIVEYQHAFKTPDADAGEERV

**Restriction Sites:** SgfI-RsrII

**Cloning Scheme:**



**ACCN:** NM\_001297656

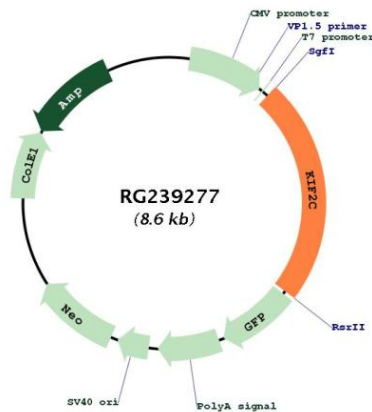
**ORF Size:** 2013 bp

**OTI Disclaimer:** The molecular sequence of this clone aligns with the gene accession number as a point of reference only. However, individual transcript sequences of the same gene can differ through naturally occurring variations (e.g. polymorphisms), each with its own valid existence. This clone is substantially in agreement with the reference, but a complete review of all prevailing variants is recommended prior to use. [More info](#)

**OTI Annotation:** This clone was engineered to express the complete ORF with an expression tag. Expression varies depending on the nature of the gene.

<b>Components:</b>	The ORF clone is ion-exchange column purified and shipped in a 2D barcoded Matrix tube containing 10ug of transfection-ready, dried plasmid DNA (reconstitute with 100 ul of water).
<b>RefSeq:</b>	<a href="#">NM_001297656.2</a>
<b>RefSeq Size:</b>	3014 bp
<b>RefSeq ORF:</b>	2016 bp
<b>Locus ID:</b>	11004
<b>UniProt ID:</b>	<a href="#">Q99661</a>
<b>Cytogenetics:</b>	1p34.1
<b>Protein Families:</b>	Druggable Genome
<b>MW:</b>	76 kDa
<b>Gene Summary:</b>	This gene encodes a kinesin-like protein that functions as a microtubule-dependent molecular motor. The encoded protein can depolymerize microtubules at the plus end, thereby promoting mitotic chromosome segregation. Alternative splicing results in multiple transcript variants. [provided by RefSeq, Jul 2014]

**Product images:**



Circular map for RG239277