

Product datasheet for **RG239274**

RAD17 (NM_001278622) Human Tagged ORF Clone

Product data:

Product Type:	Expression Plasmids
Product Name:	RAD17 (NM_001278622) Human Tagged ORF Clone
Tag:	TurboGFP
Symbol:	RAD17
Synonyms:	CCYC; HRAD17; R24L; RAD17SP; RAD24
Mammalian Cell Selection:	Neomycin
Vector:	pCMV6-AC-GFP (PS100010)
E. coli Selection:	Ampicillin (100 ug/mL)



[View online »](#)

ORF Nucleotide Sequence:

>RG239274 representing NM_001278622.
 Blue=ORF Red=Cloning site Green=Tag(s)

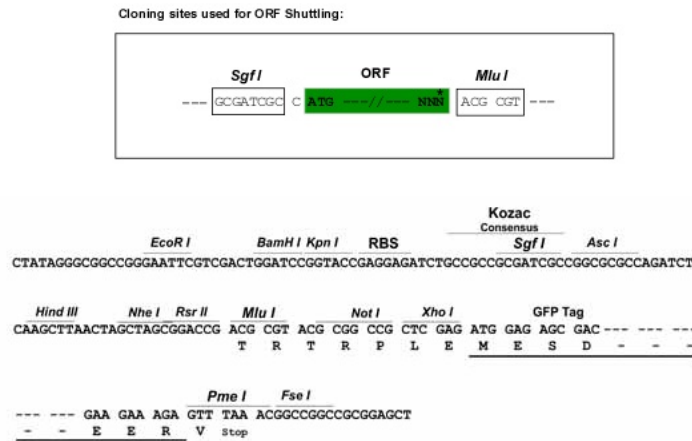
```
GCTCGTTTAGTGAACCGTCAGAATTTTGTAAACGACTCACTATAGGGCGGCCGGGAATTCGTGCGACTG
GATCCGGTACCGAGGAGATCTGCCGCCCGCATCGCC
ATGAATCAGGTAACAGACTGGGTTGACCCATCATTGATGATTTTCTAGAGTGTAGTGGCGTCTCTACT
ATTACTGCCACATCATTAGGTGTGAATAACTCAAGTCATAGAAGAAAAATGGGCCTTCTACATTAGAA
AGCAGCAGATTTCCAGCGAGAAAAAGAGGAAATCTATCTTCCTTAGAACAGATTTATGGTTTAGAAAA
TCAAAAAGAAATATCTGTCTGAAAAATGAACCATGGGTGGATAAATATAAACAGAACTCAGCATGAACTT
GCTGTGCATAAAAAGAAAATTGAAGAAGTCGAAACCTGGTTAAAAGCTCAAGTTTLAGAAAGGCAACCA
AAACAGGGTGGATCTATTTTATAAACAAGGTCCTCCTGGATGTGGAAAGACAACGACCTTAAAAATA
CTATCAAAGGAGCATGGTATTCAAGTACAAGAGTGGATTAATCCAGTTTACCAGACTTCCAAAAAGAT
GATTTCAAGGGGATGTTAATACTGAATCAAGCTTCCATATGTTCCCTATCAGTCTCAGATAGCAGTT
TTCAAAGAGTTTCTACTAAGAGCGACAAAGTATAACAAGTTACAATGCTTGGAGATGATCTGAGAACT
GATAAGAAGATAATTCTGGTTGAAGATTTACCTAACAGTTTTATCGGGATTCTCATACTTTACATGAA
GTTCTAAGGAAGTATGTGAGGATTGGTCGATGTCTCTTATATTTATAATCTCGGACAGTCTCAGTGGA
GATAAATCAAAGGTTATTGTTTCCCAAAGAAATTCAGGAAGAGTGTCTATCTCAAATATTAGTTTC
AACCTGTGGCACCACAATTATGATGAAATTTCTTAATCGAATAGTGACTATAGAAGCTAAACAAGAT
GGAGGAAAAATTAAGTGTCCCTGACAAAACCTTCTTAGAGTTGCTCTGTCCAGGGATGTTCTGGTGATC
AGAAGTGAATAAACAGCCTCCAGTTTTCTTCTTCAAAGGAGAAAAACAACCTACGGCCAAGGAAAAAA
GGAATGTCTTTAAAATCAGATGCTGTGCTGTCAAAATCAAACGAAGAAAAAACCTGATAGGGTTTTT
GAAAATCAAGAGGTCCAAGCTATTGGTGGCAAAGATGTTTCTCTGTTTCTTTCAGAGCTTTGGGAAA
ATTCTATATTGTAAGAGCATCTTTAACAGAATTAGACTCACCTCGGTTGCCCTCTCATTATCAGAA
TATGAACGGGATACATTACTTGTGAACCTGAGGAGGTAGTAGAAATGTCACACATGCCTGGAGACTTA
TTAATTTATATCTTACCAAAAACCTACATAGATTTCTTCATGGAAATTGATGATATTGTGAGAGCCAGT
GAATTTCTGAGTTTGCAGATATCCTCAGTGGTGACTGGAATACACGCTCTTACTCAGGGAATATAGC
ACATCTATAGCTACGAGAGGTGTGATGCATTCACAAAGCCCGAGGATATGCTCATTGCCAAGGAGGA
GGATCAAGTTTTCGACCCTTGCACAAACCTCAGTGGTTTCTAATAAATAAAAAGTATCGGGAAAATTGC
CTGGCAGCAAAGCACTTTTCTGACTTCTGCCTACCAGCTTTATGCCGCAAACCTCAGCTATTGCCA
TACCTTGCTCTACTAACCATTCCAATGAGAAATCAAGCTCAGATTTCTTTATCCAAGATATTGGAAGG
CTCCCTCTGAAGCGACACTTTGGAAGATTGAAAATGGAAGCCCTGACTGACAGGGAACATGGAATGATA
GACCCTGACAGCGGAGATGAAGCCAGCTTAATGGAGGACATTCTGCAGAGGAATCTCTGGGTGAACCC
ACTCAAGCCACTGTGCCGAAAACCTGGTCTTCTCTTTGAGTCAGAATAGTGCCAGTGAACCTGCCTGCT
AGCCAGCCCCAGCCCTTTTCAGCCCAAGGAGACATGGAAGAAAACATAAATAGAAGACTACGAGAGT
GATGGGACA
ACGCGTACGCGGCCGCTCGAG - GFP Tag - GTTTAAAC
```

Protein Sequence: >Peptide sequence encoded by RG239274
 Blue=ORF Red=Cloning site Green=Tag(s)

MNQVTDWVDPFDDFLECSGVSTITATSLGVNNSSHRRKNPSTLESSRFPARKRGNLSSLEQIYGLN
 SKEYLSENEPVDKYPETQHELAVHKKKIEEVETWLKAQVLERQPKQGGSIILLITGPPGCGKTTTLKI
 LSKEHGIQVQEWINPVLPDFQKDDFKGMFNTSSFFHMFYQSQIAVFKFLLRATKYNKLQMLGDDLRT
 DKKIILVEDLPNQFYRDSHTLHEVLRKYVRIGRCLIFIIISDSLSGDNNQRLLPKEIQECSISNISF
 NPVAPTIMMKFLNRIVTIEANKGGKITVPDKTSLELLCQGCSDIRSAINSLQFSSSKGENNLRPRKK
 GMSLKSDAVLSKSKRRKKPDRVFENQEQVQIGGKDVSLFLFRALGKILYCKRASLTELDPRLPSHLSE
 YERDTLLVEPEEVVEMSHMPGDLFNLYLHQNYIDFFMEIDDIVRASEFLSFADILSGDWNTRSLREYS
 TSIATRGVMHSNKARGYAHCGGGSSFRPLHKPQWFLINKKYRENCLAAKALFPDFCLPALCRQTQLLP
 YLALLTIPMRNQAQISFIQDIGRLPLKRHFGRMKMEALTDREHGMIDPDSGDEAQLNGGHSAAESLGE
 TQATVPETWSLPLSQNSASELPASQPQPFSAQGDMEENIIIEDYESDGT
 TRTRPLEMESDESGLPAMEIECRITGTLNGVEFELVGGGEGTPEQGRMTNKMKSTKGALTFSPYLLSHV
 MGYGFYHFGTYPSTYENPFLHAINNGGYNTRIEKYEDGGVLHVSFSYRYEAGRVIGDFKVMGTGFPED
 SVIFTDKIIRSNATVEHLHPMGDNDLDGSFTRTFLRDGGYYSSVVDSHMHFKSAIHPISILQNGGPMFA
 FRRVEEDHSNTELGIVEYQHAFKTPDADAGEERV

Restriction Sites: SgfI-MluI

Cloning Scheme:



ACCN: NM_001278622

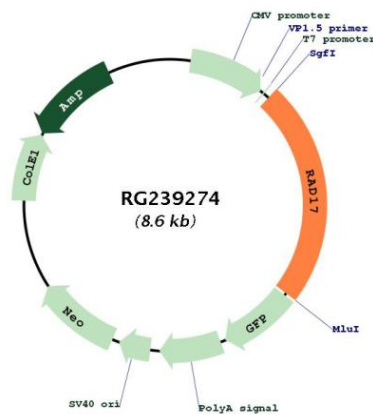
ORF Size: 2010 bp

OTI Disclaimer: The molecular sequence of this clone aligns with the gene accession number as a point of reference only. However, individual transcript sequences of the same gene can differ through naturally occurring variations (e.g. polymorphisms), each with its own valid existence. This clone is substantially in agreement with the reference, but a complete review of all prevailing variants is recommended prior to use. [More info](#)

OTI Annotation: This clone was engineered to express the complete ORF with an expression tag. Expression varies depending on the nature of the gene.

Components:	The ORF clone is ion-exchange column purified and shipped in a 2D barcoded Matrix tube containing 10ug of transfection-ready, dried plasmid DNA (reconstitute with 100 ul of water).
RefSeq:	NM_001278622.1 , NP_001265551.1
RefSeq Size:	3067 bp
RefSeq ORF:	2013 bp
Locus ID:	5884
UniProt ID:	O75943
Cytogenetics:	5q13.2
Protein Families:	Druggable Genome
MW:	75.9 kDa
Gene Summary:	The protein encoded by this gene is highly similar to the gene product of <i>Schizosaccharomyces pombe rad17</i> , a cell cycle checkpoint gene required for cell cycle arrest and DNA damage repair in response to DNA damage. This protein shares strong similarity with DNA replication factor C (RFC), and can form a complex with RFCs. This protein binds to chromatin prior to DNA damage and is phosphorylated by the checkpoint kinase ATR following damage. This protein recruits the RAD1-RAD9-HUS1 checkpoint protein complex onto chromatin after DNA damage, which may be required for its phosphorylation. The phosphorylation of this protein is required for the DNA-damage-induced cell cycle G2 arrest, and is thought to be a critical early event during checkpoint signaling in DNA-damaged cells. Multiple alternatively spliced transcript variants of this gene, which encode four distinct protein isoforms, have been reported. Two pseudogenes, located on chromosomes 7 and 13, have been identified. [provided by RefSeq, Jul 2013]

Product images:



Circular map for RG239274