

Product datasheet for **RG239271**

TAGAP (NM_001278733) Human Tagged ORF Clone

Product data:

Product Type:	Expression Plasmids
Product Name:	TAGAP (NM_001278733) Human Tagged ORF Clone
Tag:	TurboGFP
Symbol:	TAGAP
Synonyms:	ARHGAP47; FKSG15; IDDM21; TAGAP1
Mammalian Cell Selection:	Neomycin
Vector:	pCMV6-AC-GFP (PS100010)
E. coli Selection:	Ampicillin (100 ug/mL)



[View online »](#)

ORF Nucleotide Sequence:

>RG239271 representing NM_001278733.
 Blue=ORF Red=Cloning site Green=Tag(s)

```
GCTCGTTTAGTGAACCGTCAGAATTTTGTAAACGACTCACTATAGGGCGGCCGGGAATTCGTGACTG
GATCCGGTACCGAGGAGATCTGCCGCCCGGATCGCC
ATGAGAAGGCTCTCCCTGCATCAGATTTTCTGGGGCTTTGGAGACAGACTTGAAGCATCGCTATTT
GATCAGCCCTTGCAATTATCTGCGGTGACAGTGACACACTCCCAGACCCATCCAGGACATTCTCACT
ATTCTATGCCTTAAAGGCCCTTCAACGGAAGGGATATTCAGGAGAGCAGCCAACGAGAAAGCCCGTAAG
GAGCTGAAGGAGGAGCTCAACTCTGGGGATGCGGTGGATCTGGAGAGGCTCCCGTGCACCTCCTCGCT
GTGGTCTTTAAGGACTTCTCAGAAATATCCCCGGAAGCTACTTTCAAGCGACCTCTTTGAGGAGTGG
ATGGGTGCTCTGGAGATGCAGGACGAGGAGGACAGAATCGAGGCCCTGAAACAGGTTGCAGATAAGCTC
CCCCGGCCCAACCTCCTGCTACTCAAGCACTTGGTCTATGTGCTGCACCTCATCAGCAAGAACTCTGAG
GTGAACAGGATGGACTCCAGCAATCTGGCCATCTGCATTGGACCCAACATGCTCACCTGGAGAATGAC
CAGAGCCTGTCAATTTGAAGCCCAGAAGGACCTGAACAACAAGGTGAAGACTGGTGAATTCCTCATT
GATAACTGCTTTGAAATATTTGGGAGAACATTCCAGTGCATTCCAGTATCACTTCTGATGACTCCCTG
GAGCACACTGACAGTTGATGATGTCGACCTGCAGAATGACTCAGCCTACGACAGCAACGACCCTGAT
GTGGAATCCAACAGCAGCAGTGGCATCAGCTCTCCAGCAGGCAGCCCCAGGTGCCCATGGCCACAGCT
GCTGGCTTGATAGCGCGGGCCACAGGATGCCGAGAGGTGAGCCAGAGCCCATTTGTGAGCACCGTG
GCCAGGCTGAAAAGCTCCCTCGCACAGCCCGATAGGAGATACTCAGAGCCAGCATGCCATCCTCCCAG
GAGTGCCTCGAGAGCCGGGTGACAAACCAACTAACAAAGAGTGAAGGGGACTTCCCGTGCCCGG
GTAGGCTCTCGTTTGAAAGTGAGGAGGCTGAAGACCCATTTCCAGAGGAGGTCTCCCTGCAGTGCAA
GGCAAAACCAAGAGGCCGGTGGACCTGAAGATCAAGAACTTGGCCCCGGTTTCGGTGTCCCGCGGGCA
CTGGTTCTCAAAGCCTTCTCCAGCAGCTCGTGGACGCTCCTCTGACAGCTCGCCGTGGCTTCTCCT
TCCAGTCCCAAAAGAAATTTCTTCCAGCAGACATCAGTCTTTACCACAAAGACAGAGAAAGCAAGCCC
AGCCGAGAAATTAAGCACTCCTATGCTTTTACCTTTGCCCTCACAAAAAGTGCTGACCAAAAAAC
CTCAGCGCGGGCTCTGGGAAATCGCAAGACTTTACCAGGGACCACGTCCCAGGGGTGTCAGAAAGGAA
AGCCAGCTTGCCGGCCGAATCGTGCAGGAAAAATGGGTGTGAAACCCACAACCAACAGCCCGCGCTTC
TGCCTGAGACCCACGCCCTCTCGGTGGATGATGTGTTCCAGGGAGCTGACTGGGAGAGGCTGGAAGC
CCACCCTTTATGAAGAGGCCATGCAGGGCCCGGAGCCAGACTAGTGGCCTCCGAGAGCCAGACCGTG
GGGAGCATGACGGTGGGAGCATGAGGGCGAGGATGCTGGAGGCGCACTGCCTCTACCCCTCTTCCA
CCTGCTCACACGTAGAGGACTCAAGACACAGGGGAGCAAGAGCCACTCCCTGGCCACGGACTCTCT
CCCTGCCTGAGCGATGGAACAGAGCAGAACTGTCCATGCTTCTGGGGACTCTCTGGGGACGTGTCT
GGCCAGGGAGACCTGAGCTCCTCCCGTGAAGACCGTCTCCGAGTCCGTGCAGAGGAATAGCGGGAC
TGTCTCGTGCAGCATGTAGCCAGCCGGTCTTTGAGGCTGACCAATTCCAATATGCCAAAGAATCGTAT
ATT
AGCGGACCGACGCGTACGCGGCCGCTCGAG - GFP Tag - GTTTAAAC
```

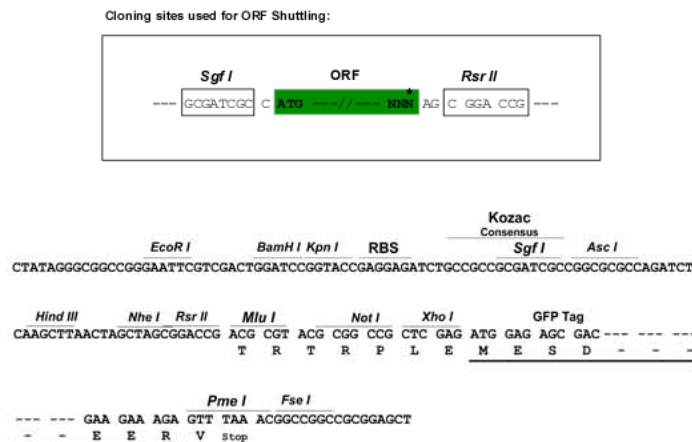
Protein Sequence: >Peptide sequence encoded by RG239271
 Blue=ORF Red=Cloning site Green=Tag(s)

```

MRRLSPASDFSGALETDLKASLFDQPLSIICGSDTLPRPIQDILTILCLKGPSTEGIFRRAANEKARK
ELKEELNSGDAVDLERLPVHLLAVVFKDFLRSIPRKLSSDLFEEMWGALEMQDEEDRIEALKQVADKL
PRPNLLLLKHLVYVHLISKNSEVNRMDSSNLAICIGPNMLTENDQSLSFEAQKDLNKNKVKTLVEFLI
DNCFEIFGENIPVHSSITSDDSLEHTDSSDVSTLQNSAYDSNDPDVESNSSSGISSPSRQPQVPMATA
AGLDSAGPQDAREVSEPIVSTVARLKSSLAQPDRRYSEPSMPSSQECLESRVTNQTLTKSEGDFPVPR
VGSRLSEEEAEDPFPEEVFPAVQGKTKRPVDLKIKNLAPGSVLPRALVLKAFSSSSLDASSDSSPVASP
SSPKRNF SRHQSF TTKTEKGKPSREIKKHSMSFTFAPHKKVLTKNLSAGSGKSQDFTRDHVPRGVRKE
SQLAGRI VQENGCEHNQTARGFCLRPHALSVDDVFQADWERPGSPSYEEAMQGAARLVASESQTQV
GSMTVGSMRARMLEAHCLLPPLPPAHVSDSRHRGSKEPLPGHLSPLPERWKQSRVHVASGDSLGHVS
GPGRELLPLRTVSESVQRNKRDCLVRRCSQPVFADQFYAKESYI
SGPTRTRPLEMESDESGLPAMEIECRITGTLNGVEFELVGGGEGTPEQGRMTNKMSTKGALTFSPYLL
SHVMGYGFYHFGTYP SGYENPFLHAINNGGYTNTRIEKYEDGGVLHVSFSYRYEAGRVI GDFKVMGTGF
PEDSVIFTDKIIRSNATVEHLHPMGDNDLDGSFTRTFLRDGGYSSVVD SHMHFKSAIHPSILQNGGP
MFAFRRVEEDHSNTELGIVEYQHAFKTPDADAGEERV
  
```

Restriction Sites: SgfI-RsrII

Cloning Scheme:



ACCN: NM_001278733

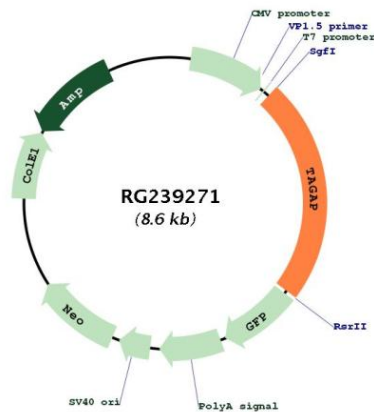
ORF Size: 2004 bp

OTI Disclaimer: The molecular sequence of this clone aligns with the gene accession number as a point of reference only. However, individual transcript sequences of the same gene can differ through naturally occurring variations (e.g. polymorphisms), each with its own valid existence. This clone is substantially in agreement with the reference, but a complete review of all prevailing variants is recommended prior to use. [More info](#)

OTI Annotation: This clone was engineered to express the complete ORF with an expression tag. Expression varies depending on the nature of the gene.

Components:	The ORF clone is ion-exchange column purified and shipped in a 2D barcoded Matrix tube containing 10ug of transfection-ready, dried plasmid DNA (reconstitute with 100 ul of water).
RefSeq:	NM_001278733.2
RefSeq Size:	3516 bp
RefSeq ORF:	2007 bp
Locus ID:	117289
UniProt ID:	Q8N103
Cytogenetics:	6q25.3
MW:	74 kDa
Gene Summary:	This gene encodes a member of the Rho GTPase-activator protein superfamily. The encoded protein may function as a Rho GTPase-activating protein. Alterations in this gene may be associated with several diseases, including rheumatoid arthritis, celiac disease, and multiple sclerosis. Alternate splicing results in multiple transcript variants encoding distinct isoforms. [provided by RefSeq, Jul 2013]

Product images:



Circular map for RG239271