

## Product datasheet for **RG239269**

### **CUL4A (NM\_001278514) Human Tagged ORF Clone**

#### **Product data:**

Product Type:	Expression Plasmids
Product Name:	CUL4A (NM_001278514) Human Tagged ORF Clone
Tag:	TurboGFP
Symbol:	CUL4A
Mammalian Cell Selection:	Neomycin
Vector:	pCMV6-AC-GFP (PS100010)
E. coli Selection:	Ampicillin (100 ug/mL)



[View online »](#)

ORF Nucleotide  
Sequence:

>RG239269 representing NM\_001278514.  
Blue=ORF Red=Cloning site Green=Tag(s)

```
GCTCGTTAGTGAACCGTCAGAATTTTGTAAACGACTCACTATAGGGCGGCCGGGAATTCGTGACTG
GATCCGGTACCGAGGAGATCTGCCGCCACGATCGCC
ATGCTCTACAAGCAACTGCGTCAGGCCTGTGAAGACCAGTCCAGGCACAGATCCTTCCGTTTAGAGAA
GACTCACTAGATAGTGTATTTTAAAGAAGATTAACACGTGCTGGCAGGACCACTGCAGACAAATG
ATCATGATCAGAAGCATCTTCTGTCTTGGACCGCACCTATGTGCTGCAGAACTCCACGCTGCCCTCC
ATCTGTCTGTTTCTTACTGTCTATACAGGGATATGGGATTAGAAGTGTTTAGAACCATATTATTAGT
GATAAAATGGTTCAGAGTAAAACCATGATGGAATCCTACTGCTGATCGAGCGGAGAGGAGCGGCGAG
GCCGTGGACCGGAGCCTGTTGCGGAGCCTCCTGGGCATGCTGTCTGACCTGCAGGTGTATAAAGATTCA
TTTGAAGTAAATTTTGAAGAGACTAATTGCTTATATGCTGCCGAAGGCCAAAGTTAATGCAGGAA
AGAGAGGTTCCAGAATATCTTAACCATGTAAGTAAACGCTTAGAGGAAGAGGGAGACAGAGTAATCACT
TACTTGGACCACAGCACAGAAACCACTGATTGCTTGTGTGGAGAAACAGCTATTAGGAGAACATTTA
ACAGCAATTCTGCAGAAAGGGCTCGACCACTTACTGGATGAGAACAGAGTGCCGGACCTCGCACAGATG
TACCAGCTGTTACGCCGGGTGAGGGGCGGGCAGCAGGCGCTGCTGCAGCACTGGAGCGAGTACATCAAG
ACTTTTGAACAGCGATCGTAATCAATCCTGAGAAAGACAAGACATGGTCCAAGACCTGTTGGACTTC
AAGGACAAGGTGGACCACGTGATCGAGGTCTGCTTCCAGAAGAATGAGCGGTTTCGTCAACCTGATGAAG
GAGTCCTTTGAGACGTTTCATCAACAAGAGACCCAAAGCCTGCAGAACTGATCGCAAAGCATGTGGAT
TCAAAGTTAAGAGCAGGCAACAAGAAGCCACAGACGAGGAGCTGGAGCGGACGTTGGACAAGATCATG
ATCCTGTTGAGGTTTATCCACGGTAAAGATGCTTTGAAGCATTTTAAAAAAGATTTGGCAAAAAAGA
CTCCTTGTGGGAAAAGTGCCTCAGTCGATGCTGAAAAGTCTATGTTGTCAAAGCTCAAGCATGAGTGC
GGTGCAGCCTTACCAGCAAGCTGGAAGGCATGTTCAAGGACATGGAGCTTTCGAAGGACATCATGGTT
CATTTCAAGCAGCATATGCAGAATCAGAGTGACTCAGGCCCTATAGACCTCACAGTGAACATACTCACA
ATGGGCTACTGGCCAACATACACGCCCATGGAAGTGCCTTAACCCAGAAATGATTAACCTCAGGAA
GTATTTAAGGCATTTTATCTTGGAAAGCACAGTGGTTCGAAAACCTCAGTGGCAAACCTACTTTGGGACAT
GCTGTTTTAAAGCGGAGTTTAAAGAAGGGAAGAAGGAATTCAGGTGTCCTCTTCCAGACACTGGTG
CTCCTCATGTTCAACGAGGGAGATGGCTTTCAGCTTTGAGGAGATAAAAAATGGCCACGGGGATAGAGGAT
AGTGAATTGCGCAGAACGCTGCAGTCCCTGGCCTGTGGCAAAGCACGTGTGCTGATTAAGTCCCAA
GGAAAGGAAGTGAAGATGGAGACAAGTTCATTTTAAATGGAGAGTTCAAGCACAAGTTGTTTGAATA
AAGATCAATCAAATTCAGATGAAGGAACTGTTGAGGAACAGGTTAGCACCCTGAGAGAGTGTTCAG
GATAGACAATATCAGATTGATGCTGCTATCGTCAAGTAAATGAAGATGAGAAAGACTCTTGGTCATAAT
CTTCTAGTTTCTGAATTATATAATCAGCTGAAATTTCCAGTAAAGCCTGGAGATTGAAAAAGAGAATT
GAATCTCTGATAGACAGAGACTATATGGAGAGAGACAAAGACAATCCGAATCAGTACCACTACGTGGCC
ACCGGTACGCGGCCGCTCGAG - GFP Tag - GTTTAAAC
```

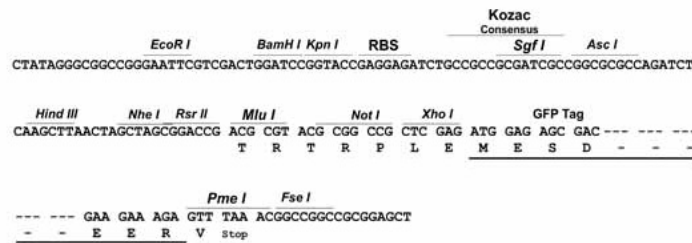
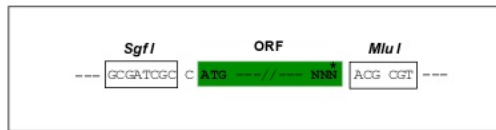
**Protein Sequence:** >Peptide sequence encoded by RG239269  
 Blue=ORF Red=Cloning site Green=Tag(s)

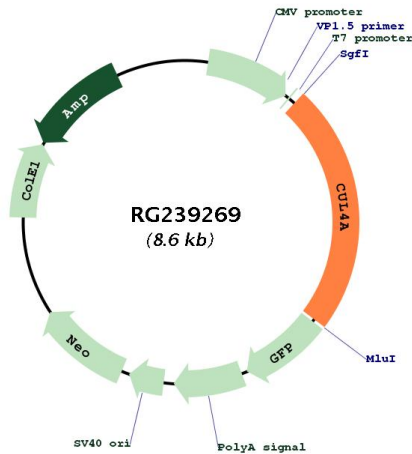
MLYKQLRQACEDHVQAQILPFREDSLDSVLFLLKINTCWQDHCRCQMIMIRSIFFLDRTYVVLQNSTLPS  
 ICPVSYCLYRDMGLELFRTHIISDKMVQSKTIDGILLIERERSGEAVDRSLLRSLGMLSDLQVYKDS  
 FELKFLEETNCLYAAEQRLMQEREVPEYLNHVSKRLEEEGDRVITYLDHSTQKPLIACVEKQLLGEHL  
 TAILQKGLDHLLDENRVPDLAQMYQLFSRVRGGQQALLQHWSEYIKTFGTAVINPEKDKDMVQLLDF  
 KDKVDHVIIEVCFQKNERFVNLKESFETFINKRPNKPAELIAKHVDSKLRAGNKEATDEELERTLDKIM  
 ILFRFIHGKDVFEAFYKKDLAKRLLVGKSASVDAEKSMLSKLKHECGAAFTSKLEGMFKDMELSKDIMV  
 HFKQHMQNQSDSGPIDLTVNILTMGYWPTYTPMEVHLTPMIKQEVFKAFYLGKHSGRKLQWQTTLGH  
 AVLKAEFKEGKKEFQVSLFQTLVLLMFNEGDGFSFEEIKMATGIEDSELRRTLQSLACGKARVLIKSPK  
 GKEVEDGDKFIFNGEFKHLFRIKINQIQMKETVEEQVSTTERVQDRQYQIDAAIVRIMKMRKTLGHN  
 LLVSELVNQLKFPVKPGDLKKRIESLIDRDYMERDKDNPQYHYVA  
 TRTRPLEMESDESGLPAMEIECRITGTLNGVEFELVGGEGTPEQGRMTNKMKSTKGALTFSPYLLSHV  
 MGYGFYHFGTYPSTYENPFLHAINNGGYNTRIEKYEDGGVLHVSFSYRYEAGRVIGDFKVMGTGFPED  
 SVIFTDKIIRSNTAVEHLHPMGDNDLDGSFTRTFLRDGGYSSVVDSHMHFKSAIHPSILQNGGPMFA  
 FRRVEEDHSNTELGIVEYQHAFKTPDADAGEERV

**Restriction Sites:** SgfI-MluI

**Cloning Scheme:**

Cloning sites used for ORF Shuttling:



**Plasmid Map:**


<b>ACCN:</b>	NM_001278514
<b>ORF Size:</b>	2001 bp
<b>OTI Disclaimer:</b>	The molecular sequence of this clone aligns with the gene accession number as a point of reference only. However, individual transcript sequences of the same gene can differ through naturally occurring variations (e.g. polymorphisms), each with its own valid existence. This clone is substantially in agreement with the reference, but a complete review of all prevailing variants is recommended prior to use. <a href="#">More info</a>
<b>OTI Annotation:</b>	This clone was engineered to express the complete ORF with an expression tag. Expression varies depending on the nature of the gene.
<b>Components:</b>	The ORF clone is ion-exchange column purified and shipped in a 2D barcoded Matrix tube containing 10ug of transfection-ready, dried plasmid DNA (reconstitute with 100 ul of water).
<b>RefSeq:</b>	<a href="#">NM_001278514.2</a>
<b>RefSeq Size:</b>	3721 bp
<b>RefSeq ORF:</b>	2004 bp
<b>Locus ID:</b>	8451
<b>Cytogenetics:</b>	13q34
<b>Protein Pathways:</b>	Nucleotide excision repair, Ubiquitin mediated proteolysis

**MW:** 78.2 kDa

**Gene Summary:** CUL4A is the ubiquitin ligase component of a multimeric complex involved in the degradation of DNA damage-response proteins (Liu et al., 2009 [PubMed 19481525]).[supplied by OMIM, Oct 2009]