

Product datasheet for **RG239263**

Calpastatin (CAST) (NM_001284212) Human Tagged ORF Clone

Product data:

Product Type:	Expression Plasmids
Product Name:	Calpastatin (CAST) (NM_001284212) Human Tagged ORF Clone
Tag:	TurboGFP
Symbol:	Calpastatin
Synonyms:	BS-17; PLACK
Mammalian Cell Selection:	Neomycin
Vector:	pCMV6-AC-GFP (PS100010)
E. coli Selection:	Ampicillin (100 ug/mL)



[View online »](#)

ORF Nucleotide Sequence:

>RG239263 representing NM_001284212.
 Blue=ORF Red=Cloning site Green=Tag(s)

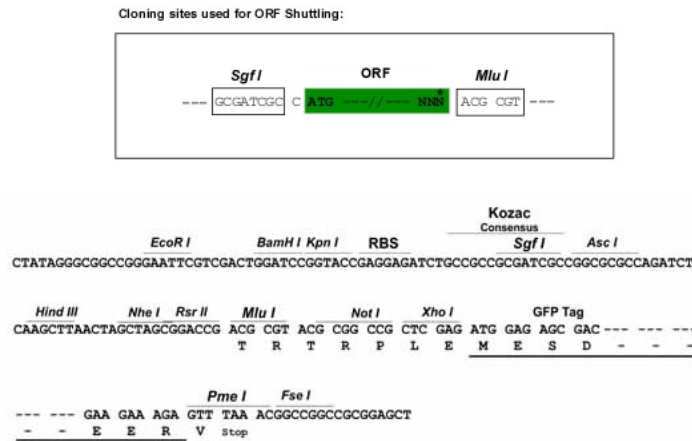
```
GCTCGTTTAGTGAACCGTCAGAATTTTGTAAACGACTCACTATAGGGCGGCCGGGAATTCGTGACTG
GATCCGGTACCGAGGAGATCTGCCGCCACGATCGCC
ATGAATCCACAGAAACCAAGGCTGTAAAAACAGAACCTGAGAAGAAGTCACAGTCAACCAAGCCAAAA
AGCCTACCCAAGCAGGCATCAGATACAGGAAGTAACGATGCTCACAATAAAAAAGCAGTTCCAGATCA
GCTGAACAGCAGCCATCAGAGAAATCAACAGAACCAAGACTAAACCACAAGACATGATTCTGCTGGT
GGAGAGAGTGTGCTGGTATCACTGCAATATCTGGCAAGCCGGGTGACAAGAAAAAGAAAAAGAAATCA
TTAACCCAGCTGTGCCAGTTGAATCTAAACCGGATAAACCATCGGGAAAGTCAGGCATGGATGCTGCT
TTGGATGACTTAATAGATACTTTAGGAGGACCTGAAGAACTGAAGAAGAAAAACAACGTATACTGGA
CCAGAAGTTTCAGATCCAATGAGTTCCACCTACATAGAGGAATTGGGTAAAAGAGAAGTCACAATTCCT
CCAAAAATATAGGGAATATTGGCTAAAAAGGAAGGGATCACAGGGCCTCTGCAGACTCTCGAAACCC
ATAGGGCCAGATGATGCTATAGACGCCTTGTCTGACTTCACCTGTGGTGCCTACAGCTGCTGGA
AAGAAAAGTGAAGAGGAATCTACAGAAATTTTAAAGCTCAGTCAGCAGGGACAGTCAGAAGTCT
GCTCCACCCCAAGAGAAGAAAGAAAGTGGAGAAGGATACAATGAGTGATCAAGCACTCGAGGCTCTG
TCGGCTTCACTGGGCACCCGGCAAGCAGAACCTGAGCTCGACCTCCGCTCAATTAAGGAAGTCGATGAG
GCAAAAGCTAAAGAAGAAAACTAGAGAAGTGTGGTGAGGATGATGAAACAATCCCATCTGAGTACAGA
TTAAAACCCAGCCACGGATAAAGATGGAAAACCACTATTGCCAGAGCCTGAAGAAAAACCAAGCCTCGG
AGTGAATCAGAATCATTGATGAACTTTGAGAAGATTTGACCGGTCTGAATGTAAGAGAAACCATCT
AAGCCAACTGAAAAGACAGAAGAATCTAAGGCCGCTGCTCCAGCTCCTGTGTCGGAGGCTGTGTGCTGG
ACCTCCATGTGTAGTATACAGTCAGCACCCCTGAGCCGGCTACCTTGAAGGGCACAGTGCCAGATGAT
GCTGTAGAAGCCTTGGCTGATAGCCTGGGAAAAAGGAAGCAGATCCAGAAGATGGAAAACCTGTGATG
GATAAAGTCAAGGAGAAGGCCAAAGAAGAAGACCGTGAAAAGCTTGGTGAAAAAGAAAGAAACAATTCCT
CCTGATTATAGATTAGAAGAGGTCAAGGATAAAGATGGAAAGCCACTCCTGCCAAAAGAGTCTAAGGAA
CAGCTTCCACCCATGAGTGAAGACTTCTTCTGGATGCTTTGTCTGAGGACTTCTCTGGTCCACAAAAT
GCTTCATCTCTAAATTTGAAGATGCTAAACTTGTGCTGCCATCTCTGAAGTGGTTTCCAAAACCCCA
GCTTCAACGACCAAGCTGGAGCCCAACCCGTGATACCTCGAGTGACAAAGACCTCGATGATGCCTTG
GATAAACTCTCTGACAGTCTAGGACAAAGGCAGCCTGACCCAGATGAGAACAACCAATGGAAGATAAA
GTAAGGAAAAAGCTAAAGCTGAACATAGAGACAAGCTTGGAGAAAGAGATGACACTATCCACCTGAA
TACAGACATCTCTGGATGATAATGGACAGGACAAACCAGTGAAGCCACCTACAAGAAATCAGAGGAT
TCAAAGAAACCTGCAGATGACCAAGACCCATTGATGCTCTCTCAGGAGATCTGGACAGCTGCCCTCC
ACTACAGAAACCTCACAGAACACAGCAAAGGATAAGTGCAAGAAGGCTGCTTCCAGCTCCAAGCACCT
AAGAATGGAGGTAAGCGAAGGATTCAGCAAAGACAACAGAGGAAACTTCCAAGCCAAAAGATGAC
ACCGGTACGCGGCCGCTCGAG – GFP Tag – GTTTAAAC
```

Protein Sequence: >Peptide sequence encoded by RG239263
 Blue=ORF Red=Cloning site Green=Tag(s)

MNPTETKAVKTEPEKKSQSTKPKSLPKQASDTGSNDAHNNKAVSRSAEQQPSEKSTEPKTKPQDMISAG
 GESVAGITAIISGKPGDKKKEKSLTPAVPVEVKPKPSGKSGMDAALDDLIDTLGGPEETEEENTTYTG
 PEVSDPMSSTYIEELGKREVTIPPKYRELLAKKEGITGPPADSSKPIGPDDAIDALSSDFTCGSPTAAG
 KKTEKEESTEVLKAQSAGTVRSAAPPQEKRRKVEKDTMSDQALEAL SASLGRQAEPELDRSIKEVDE
 AKAKEEKLEKCGEDDETIPSEYRLKPADKDGKPLLPEPEEKPKRSESELIDELSEDFDRSECKEKS
 KPTEKTEESKAAAAPVSEAVCRTSMCSIQSAPPEPATLKGTVPDDAVEALADSLGKKEADPEDGKPV
 DKVKEKAKEEDREKLGEKEETIPPDYRLEEVDKDGKPLLPKESKEQLPMSDFLLDALSEDFSGPQN
 ASSLFEDAKLAAAISEVVSQTPASTTQAGAPPRDSSDKLDDALDKLSDSLGQRQPPDENKPMEDK
 VKEKAKAEHRDKLGERDDTIPPEYRHLDDNGQDKVPKPTKSEDSKPPADDQDPIDALSGDLSDSCPS
 TTETSQNTAKDKCKKAASSKAPKNGGKAKDSAKTTEETSKPKDD
 TRTRPLEMESDEGLPAMEIECRITGTLNGVEFELVGGGEGTPEQGRMTNKMKSTKGALTFSPYLLSHV
 MGYGFYHFGTYPSGYENPFLHAINNGGYNTRIEKYEDGGVLHVSFSYRYEAGRVIGDFKVMGTGFPE
 SVIFTDKIIRS NATVEHLHPMGDNDLDGSFTRTFSLRDGGYYSSVVD SHMHFKSAIHP SILQNGGPMFA
 FRRVEEDHSNTELGIVEYQHAFKTPDADAGEERV

Restriction Sites: SgfI-MluI

Cloning Scheme:



ACCN: NM_001284212

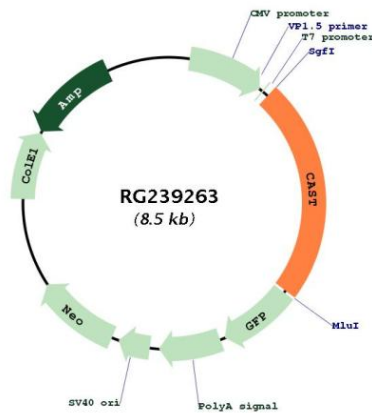
ORF Size: 1998 bp

OTI Disclaimer: The molecular sequence of this clone aligns with the gene accession number as a point of reference only. However, individual transcript sequences of the same gene can differ through naturally occurring variations (e.g. polymorphisms), each with its own valid existence. This clone is substantially in agreement with the reference, but a complete review of all prevailing variants is recommended prior to use. [More info](#)

OTI Annotation: This clone was engineered to express the complete ORF with an expression tag. Expression varies depending on the nature of the gene.

Components:	The ORF clone is ion-exchange column purified and shipped in a 2D barcoded Matrix tube containing 10ug of transfection-ready, dried plasmid DNA (reconstitute with 100 ul of water).
RefSeq:	NM_001284212.3
RefSeq Size:	4195 bp
RefSeq ORF:	2001 bp
Locus ID:	831
UniProt ID:	P20810
Cytogenetics:	5q15
MW:	72.2 kDa
Gene Summary:	The protein encoded by this gene is an endogenous calpain (calcium-dependent cysteine protease) inhibitor. It consists of an N-terminal domain L and four repetitive calpain-inhibition domains (domains 1-4), and it is involved in the proteolysis of amyloid precursor protein. The calpain/calpastatin system is involved in numerous membrane fusion events, such as neural vesicle exocytosis and platelet and red-cell aggregation. The encoded protein is also thought to affect the expression levels of genes encoding structural or regulatory proteins. Alternatively spliced transcript variants encoding different isoforms have been described. [provided by RefSeq, Jun 2010]

Product images:



Circular map for RG239263