

Product datasheet for **RG239260**

FUBP1 (NM_001303433) Human Tagged ORF Clone

Product data:

Product Type:	Expression Plasmids
Product Name:	FUBP1 (NM_001303433) Human Tagged ORF Clone
Tag:	TurboGFP
Symbol:	FUBP1
Synonyms:	FBP; FUBP; hDH V
Mammalian Cell Selection:	Neomycin
Vector:	pCMV6-AC-GFP (PS100010)
E. coli Selection:	Ampicillin (100 ug/mL)



[View online »](#)

ORF Nucleotide
Sequence:

>RG239260 representing NM_001303433.
Blue=ORF Red=Cloning site Green=Tag(s)

```
GCTCGTTTAGTGAACCGTCAGAATTTTGTAAACGACTCACTATAGGGCGGCCGGGAATTCGTGACTG
GATCCGGTACCGAGGAGATCTGCCGCCACGATCGCC
ATGGCAGACTATTCAACAGTGCCTCCCCCTCTCTGGCTCAGCTGGTGGCGGTGGTGGCGCGGTGGT
GGTGGAGGAGTTAACGACGCTTTCAAAGATGCACTGCAGAGAGCCCGCAGATTGCAGAAAAATTGGA
GGTGATGCAGGGACATCACTGAATTCAAATGACTATGGTTATGGGGGACAAAAAGACCTTTAGAAGAT
GGAGATGGCTCTTGACAAGTCCGAGCAGTACAACACACTGGGAGGGAATGCCCTCTCTTTTAAAGAT
CAACCAGATGCTAAGAAAGTTGCTCCTCAAATGACTCTTTTGGAACACAGTTACCACCGATGCATCAG
CAGCAAAGCAGATCTGTAATGACAGAAGAATACAAAGTCCAGATGGAATGGTTGGATTCAATTTGGC
AGAGGAGGTGAACAGATCTCACGCATACAACAGGAATCTGGATGCAAAAACAGATAGCTCCTGACAGT
GGTGGCCTCCAGAAAGGTCTGTATGTTAACTGGAACACCTGAATCTGTCCAGTCAGCAAAACGGTTA
CTGGACCAGATTGTTGAAAAAGGAAGACCAGCTCCTGGCTCCATCATGGCGATGGACCGGAAATGCA
GTTCAAGAAATCATGATTCCAGTAGCAAGGCAGGATTAGTCATTGGAAAAGGGGAGAAACTATTTAA
CAGCTTCAGGAACGGGCTGGAGTTAAAAATGGTTATGATTCAAGACGGGCCGAGAACACTGGTGCTGAC
AAACCTCTTAGGATTACAGGAGACCCATATAAAGTTCAACAAGCCAAGGAAATGGTGTTAGAGTTAATT
CGTGATCAAGGCGGTTTCAGAGAAGTTCGGAATGAGTATGGGTCAAGAATAGGAGGAAATGAAGGGATA
GATGTCCCATTTCCAAGATTTGCTGTTGGCATTGTAATAGGAAGAAATGGAGAGATGATCAAAAAATA
CAAAATGATGCTGGTGTTCGCATTCAAGTTAAGCCAGATGATGGGACAACACCCGAAAGGATAGCACA
ATAACAGGACCTCCAGACCGATGCAACATGCTGCAGAAATTTACAGACCTTCTTCAAGTGTTCAG
GCTGGTAATCCTGGTGGACCTGGACCTGGTGGTCGAGGAAGAGGTAGAGGTCAAGGCAACTGGAACATG
GGACCACCTGGTGGACTACAGGAATTTAATTTTATTGTGCAACTGGGAAAAGTGGATTAATAATAGGA
AAAGGAGGTGAAACCATAAAAAGCATAAGCCAGCAGTCTGGTGCAAGAATAGAAGTTCAGAGAAATCCT
CCACCAAATGCAGATCCTAATATGAAGTTATTTACAATTCGTGGCACTCCACAACAGATAGACTATGCT
CGGCAACTCATAGAAGAAAAGATTGGTGGCCAGTAAATCCTTTAGGGCCACCTGTACCCCATGGGCC
CATGGTGTCCCAGGCCCATGGACCTCCTGGCCTCCAGGCCCTGGAATCCAATGGGACCATAACAAC
CCTGCACCTTATAATCCTGGACCACCAGGCCCGGCTCCTCATGGTCTCCAGCCCATATGCTCCCAG
GGATGGGAAATGCATATCCACACTGGCAGCAGCAGGCTCCTCCTGATCCAGCTAAGGCAGGAACGGAT
CCAAATTCAGCAGCTTGGGCTGCTTATTACGCTCACTATTATCAACAGCAAGCACAGCCACCACCAGCA
GCCCTGCAGGTGCACCAACTACAACCTAACTAATGGACAAGGAGATCAGCAGAATCCAGCCCCAGCT
GGACAGGTTGATTATACCAAGGCTTGGGAAGAGTACTACAAGAAAATGGGTCAGGCAGTTCTGCTCCG
ACTGGGGCTCCTCCAGGTGGTCAGCCAGATTATAGTGCAGCCTGGGCTGAGTATTATAGACAACAAGCA
GCCTATTATGCCAGACAAGTCCCAGGGAATGCCACAGCATCCTCCAGCACCTCAGGGCCAA
ACGCGTACGCGGCCGCTCGAG - GFP Tag - GTTTAAAC
```

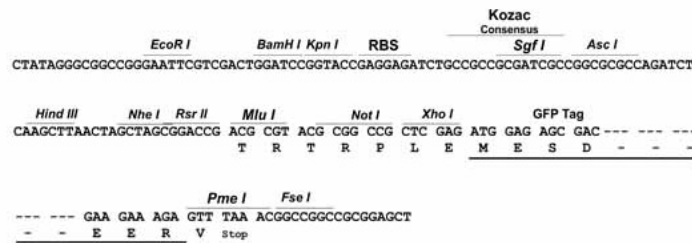
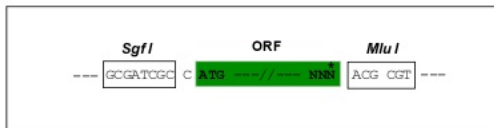
Protein Sequence: >Peptide sequence encoded by RG239260
 Blue=ORF Red=Cloning site Green=Tag(s)

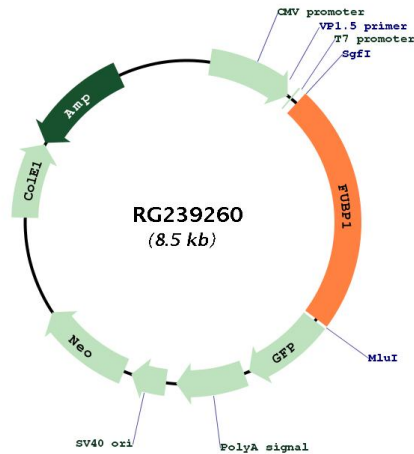
MADYSTVPPPSSGSAGGGGGGGGGVNDAFKDALQRRARQIAAKIGGDAGTSLNSNDYGYGGQKRPLED
 GDGSWTSPSSTTHWEGMPSPFKDQPDAAKVAPQNSFGTQLPPMHQQSRSVMTEEYKVPDGMVGFIIIG
 RGGEQISRIQQESGCKIQIAPDSGGLPERSCLM TGTPEVSQSAKRLLDQIVEKGRPAPGFHHGDGPGNA
 VQEIMIPASKAGLVIGKGETIKQLQERAGVKMVMIQDGPQNTGADKPLRITGDPYKVVQAKEMVLELI
 RDQGGFREVRNEYSGRIIGNEGIDVPIPRFAVGI VIGRNGEMIKKI QNDAGVRIQFKPDDGTTPERIAQ
 ITGPPDRCQHAAEIITDLLRSVQAGNPGGPGGGRGRGRGQGNWNMGPPGGLQEFNFIVPTGKTGLIIG
 KGGETIKSISQQSGARIELQRNPPNADPNMKLFTIRGTPQQIDYARQLIEEKIGGPVNPLGPPVPHGP
 HGVPGPHGPPGPPGPTMPGPNPAPYNP GPPGPAHPGPPAPYAPQGWGNAYPHWQQAPPDPAKAGTD
 PNSAAWAAYYAHYYQQQAQPPPAAPAGAPTTTQTNGQDQONPAPAGQVDYTKAWEEYKKMGQAVPAP
 TGAPPGGQPDYSAAWAEYRQQAAYYAQTSPQGMPOHPPAPQGG
TRTRPLEMESDESGLPAMEIECRITGTLNGVEFELVGGGEGTPEQGRMTNKMKSTKGALTFSPYLLSHV
 MGYGFYHFGTYPSTYENPFLHAINNGGYNTRIEKYEDGGVLHVSFSYRYEAGRVIGDFKVMGTGFPEP
 SVIFTDKIIRSNAIVEHLHPMGDNDLDGSFTRTSLRDGGYSSVVD SHMHFKSAIHP SILQNGGPMFA
 FRRVEEDHSNTELGIVEYQHAFKTPDADAGEERV

Restriction Sites: SgfI-MluI

Cloning Scheme:

Cloning sites used for ORF Shuttling:



Plasmid Map:


ACCN:	NM_001303433
ORF Size:	1995 bp
OTI Disclaimer:	The molecular sequence of this clone aligns with the gene accession number as a point of reference only. However, individual transcript sequences of the same gene can differ through naturally occurring variations (e.g. polymorphisms), each with its own valid existence. This clone is substantially in agreement with the reference, but a complete review of all prevailing variants is recommended prior to use. More info
OTI Annotation:	This clone was engineered to express the complete ORF with an expression tag. Expression varies depending on the nature of the gene.
Components:	The ORF clone is ion-exchange column purified and shipped in a 2D barcoded Matrix tube containing 10ug of transfection-ready, dried plasmid DNA (reconstitute with 100 ul of water).
RefSeq:	NM_001303433.1 , NP_001290362.1
RefSeq Size:	2585 bp
RefSeq ORF:	1998 bp
Locus ID:	8880
UniProt ID:	Q96AE4
Cytogenetics:	1p31.1
Protein Families:	Stem cell - Pluripotency, Transcription Factors

MW: 70.3 kDa

Gene Summary: The protein encoded by this gene is a single stranded DNA-binding protein that binds to multiple DNA elements, including the far upstream element (FUSE) located upstream of c-myc. Binding to FUSE occurs on the non-coding strand, and is important to the regulation of c-myc in undifferentiated cells. This protein contains three domains, an amphipathic helix N-terminal domain, a DNA-binding central domain, and a C-terminal transactivation domain that contains three tyrosine-rich motifs. The N-terminal domain is thought to repress the activity of the C-terminal domain. This protein is also thought to bind RNA, and contains 3'-5' helicase activity with in vitro activity on both DNA-DNA and RNA-RNA duplexes. Aberrant expression of this gene has been found in malignant tissues, and this gene is important to neural system and lung development. Binding of this protein to viral RNA is thought to play a role in several viral diseases, including hepatitis C and hand, foot and mouth disease. Alternative splicing results in multiple transcript variants. [provided by RefSeq, Dec 2014]