

Product datasheet for **RG239259**

IL4R (NM_001257997) Human Tagged ORF Clone

Product data:

Product Type:	Expression Plasmids
Product Name:	IL4R (NM_001257997) Human Tagged ORF Clone
Tag:	TurboGFP
Symbol:	IL4R
Synonyms:	CD124; IL-4RA; IL4RA
Mammalian Cell Selection:	Neomycin
Vector:	pCMV6-AC-GFP (PS100010)
E. coli Selection:	Ampicillin (100 ug/mL)



[View online »](#)

ORF Nucleotide Sequence:

>RG239259 representing NM_001257997.
 Blue=ORF Red=Cloning site Green=Tag(s)

```

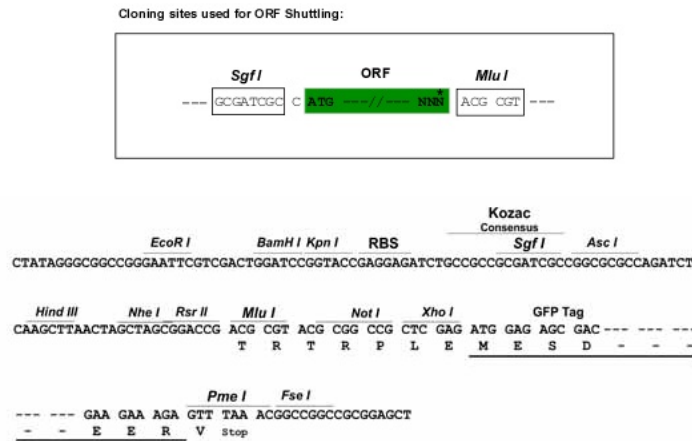
GCTCGTTTAGTGAACCGTCAGAATTTTGTAAACGACTCACTATAGGGCGGCCGGGAATTCGTGACTG
GATCCGGTACCGAGGAGATCTGCCGCCACGATCGCC
ATGCAGTCAACATTTGGAGTAAAAACGACCCGGCAGATAATCTATAACGTGACCTACCTAGAACCCCTCC
CTCCGCATCGCAGCCAGCACCCCTGAAGTCTGGGATTTCTACAGGGCACGGGTGAGGGCCTGGGCTCAG
TGCTATAACACCACCTGGAGTGAGTGGAGCCCCAGCACCAAGTGGCACAACCTCTACAGGGAGCCCTTC
GAGCAGCACCTCCTGCTGGGCGTCAGCGTTTCTGCATTGTCATCCTGGCCGCTGCCTGTTGTGTAT
GTCAGCATCACCAAGATTAAGAAAGAATGGTGGGATCAGATTCCCAACCCAGCCCGCAGCCGCTCGTG
GCTATAATAATCCAGGATGCTCAGGGGTACAGTGGGAGAAGCGGTCCCGAGGCCAGGAACCAGCCAAG
TGCCACACTGGAAGAATTGTCTACCAAGCTTTGCCCTGTTTTCTGGAGCACAACATGAAAAGGGAT
GAAGATCCTCACAAGGCTGCCAAAGAGATGCCTTTCCAGGGCTCTGAAAATCAGCATGGTGCCAGTG
GAGATCAGCAAGACAGTCTCTGGCCAGAGAGCATCAGCGTGGTCCGATGTGTGGAGTTGTTTGAGGCC
CCGGTGGAGTGTGAGGAGGAGGAGGAGGTAGAGGAAGAAAAGGGAGCTTCTGTGCATCGCCTGAGAGC
AGCAGGGATGACTTCCAGGAGGGAAGGGAGGGCATTGTGGCCCGCTAACAGAGAGCCTGTTCTGGAC
CTGCTCGGAGAGGAGAATGGGGGCTTTGCCAGCAGGACATGGGGGAGTATGCCTTCTCCACCTTCG
GGAAGTACGAGTGTACATGCCCTGGGATGAGTTCCCAAGTGCAGGGCCCAAGGAGGCACCTCCCTGG
GGCAAGGAGCAGCCTCTCCACCTGGAGCCAAGTCTCCTGCCAGCCCGACCCAGAGTCCAGACAACCTG
ACTTGACAGAGACGCCCTCGTCATCGCAGGCAACCTGCTTACCGCAGCTTACGCAACTCCCTGAGC
CAGTACCCTGTCCCAGAGAGCTGGGTCCAGACCCACTGCTGGCCAGACACCTGGAGGAAGTAGAACCC
GAGATGCCCTGTGTCCCCAGCTCTCTGAGCCAACCACTGTGCCCAACCTGAGCCAGAACCTGGGAG
CAGATCCTCCGCCGAAATGTCTCCAGCATGGGGCAGCTGCAGCCCCGTCTCGGCCCCACCAAGTGGC
TATCAGGAGTTTGTACATGCGGTGGAGCAGGGTGGCACCCAGGCCAGTGGGTGGTGGGCTTGGGTCCC
CCAGGAGAGGCTGGTTACAAGGCCTTCTCAAGCCTGCTTGCCAGCAGTGTGTGTCCCCAGAGAAATGT
GGGTTTGGGGCTAGCAGTGGGGAAGAGGGGTATAAGCCTTTCCAAGACCTCATTCTGGTGCCTGGG
GACCCTGCCCCAGTCCCTGTCCCCTTGTTCACCTTTGGACTGGACAGGGAGCCACCTCGCAGTCCGAG
AGCTCACATCTCCAAGCAGTCCCCAGAGCACCTGGGTCTGGAGCCGGGGAAAAGGTAGAGGACATG
CCAAAGCCCCACTTCCCAGGAGCAGGCCACAGACCCCTTGTGGACAGCCTGGGCAGTGGCATTGTC
TACTCAGCCCTTACCTGCCACCTGTGCGCCACCTGAAACAGTGTATGGCCAGGAGGATGGTGCCAG
ACCCCTGTATGGCCAGTCTTGTGTGGCTGCTGCTGTGGAGACAGTCTCGCCCCCTACAACCCCC
CTGAGGGCCCCAGACCCCTCTCCAGGTGGGTTCCACTGGAGGCCAGTCTGTGTCCGGCCTCCCTGGCA
CCCTCGGGCATCTCAGAGAAGAGTAAATCCTCATCATCTTCCATCTGCCCTGGCAATGCTCAGAGC
TCAAGCCAGACCCCAAAATCGTGAACCTTGTCTCCGTGGGACCCACATACATGAGGGTCTCT
ACCGGTACGCGGCCGCTCGAG - GFP Tag - GTTTAAAC
  
```

Protein Sequence: >Peptide sequence encoded by RG239259
 Blue=ORF Red=Cloning site Green=Tag(s)

MQSTFGVKTRQIIYNVITYLEPSLRIAASTLKSIGISYRVRVRAWAQCYNNTWSEWSPSTKWHNSYREFP
 EQHLLLVSVSCIVILAVCLLCYVSITKIKKEWWDQIPNPARSRLVAII IQDAQSQWEKRSRGQEPAK
 CPHWKNCCLKLLPCFLEHNMKRDEDPHKAAKEMPFQSGKSAWCPVEISKTVLWPESISVVRCELFEA
 PVECEEEEEVEEEKGSFCASPESSRDFQEGREGIVARL TESLFLDLLGEENGFCQQDMGESCLLPSS
 GSTSAHMPWDEFPSAGPKEAPPWKEQPLHLEPSPPASPTQSPDNLCTETPLVIAGNPAYRSFSNLS
 QSPCPRELGPDPLLARHLEEEVEPEMPCVPQLSEPTTVPQPEPETWEQILRRNVLQHGAAPVSAPTS
 YQEFVHAVEQGGTQASAVVGLGPPGEAGYKAFSSLLASSAVSPEKCGFGASSGEEGYKPFQDLIPGCPG
 DPAPVPVPLFTFGLDREPPRSPQSSHLPSSSPEHLGLEPGEKVEDMPKPLPQEQAQDPLVDSLGS
 GIVYSALTCHLCGHLKQCHGQEDGGQTPVMASPCGCCCGDRSSPTTPLRAPDPSPGGVPLEASLCPASLA
 PSGISEKSKSSSFHPAPGNAQSSQTPKIVNFVSVGPTYMRVS
 TRTRPLEMESDESGLPAMEIECRITGTLNGVEFELVGGEGTPEQGRMTNKMSTKGALTFSPYLLSHV
 MGYGFYHFGTYPSTYENPFLHAINNGGYTNTRIEKYEDGGVLHVSFSYRYEAGRVIGDFKVMGTGFPED
 SVIFTDKIIRSNAIVEHLHPMGDNDLDGSFTRTFLRDGGYSSVVDSHMHFKSAIHPISILQNGGPMFA
 FRRVEEDHSNTELGIVEYQHAFKTPDADAGEERV

Restriction Sites: SgfI-MluI

Cloning Scheme:



ACCN: NM_001257997

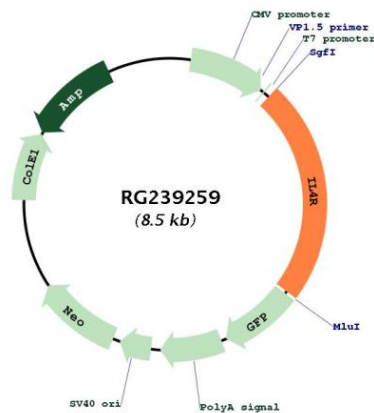
ORF Size: 1995 bp

OTI Disclaimer: The molecular sequence of this clone aligns with the gene accession number as a point of reference only. However, individual transcript sequences of the same gene can differ through naturally occurring variations (e.g. polymorphisms), each with its own valid existence. This clone is substantially in agreement with the reference, but a complete review of all prevailing variants is recommended prior to use. [More info](#)

OTI Annotation: This clone was engineered to express the complete ORF with an expression tag. Expression varies depending on the nature of the gene.

Components:	The ORF clone is ion-exchange column purified and shipped in a 2D barcoded Matrix tube containing 10ug of transfection-ready, dried plasmid DNA (reconstitute with 100 ul of water).
RefSeq:	<u>NM_001257997.2</u>
RefSeq Size:	3589 bp
RefSeq ORF:	1998 bp
Locus ID:	3566
Cytogenetics:	16p12.1
Protein Families:	Druggable Genome, Secreted Protein
Protein Pathways:	Cytokine-cytokine receptor interaction, Hematopoietic cell lineage, Jak-STAT signaling pathway
MW:	72.3 kDa
Gene Summary:	This gene encodes the alpha chain of the interleukin-4 receptor, a type I transmembrane protein that can bind interleukin 4 and interleukin 13 to regulate IgE production. The encoded protein also can bind interleukin 4 to promote differentiation of Th2 cells. A soluble form of the encoded protein can be produced by proteolysis of the membrane-bound protein, and this soluble form can inhibit IL4-mediated cell proliferation and IL5 upregulation by T-cells. Allelic variations in this gene have been associated with atopy, a condition that can manifest itself as allergic rhinitis, sinusitis, asthma, or eczema. Polymorphisms in this gene are also associated with resistance to human immunodeficiency virus type-1 infection. Alternate splicing results in multiple transcript variants. [provided by RefSeq, Apr 2012]

Product images:



Circular map for RG239259