

Product datasheet for **RG239257**

ZNF180 (NM_001291633) Human Tagged ORF Clone

Product data:

Product Type:	Expression Plasmids
Product Name:	ZNF180 (NM_001291633) Human Tagged ORF Clone
Tag:	TurboGFP
Symbol:	ZNF180
Synonyms:	HHZ168
Mammalian Cell Selection:	Neomycin
Vector:	pCMV6-AC-GFP (PS100010)
E. coli Selection:	Ampicillin (100 ug/mL)



[View online »](#)

ORF Nucleotide Sequence:

>RG239257 representing NM_001291633.
 Blue=ORF Red=Cloning site Green=Tag(s)

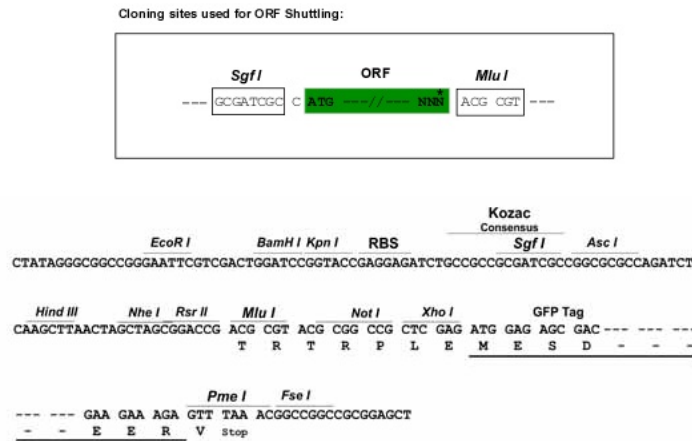
```
GCTCGTTTAGTGAACCGTCAGAATTTTGTAAACGACTCACTATAGGGCGGCCGGGAATTCGTGACTG
GATCCGGTACCGAGGAGATCTGCCGCCACGATCGCC
ATGGAAGAGCAGGATGAGAAGCCCCAGAGCCCCGAAGGTCTGTGCACAGGATTCTTCCCTCCTCAA
GAGATTATCATCAAAGTCGAGGGAGAAGACACTGGGTCTCTGACCATCCCATCTCAGGAAGGAGTGAAC
TTCAAAATTGTGACTGTGGACTTCACACGGGAGGAACAGGGTACTTGCAACCCTGCTCAGAGGACCCTG
GACAGAGATGTGATCCTGGAGAACCACAGGACCTAGTCTCTTGGGACTTGGCAACTGCAGTTGGAAAA
AAAGATTCAACTTCAAAGCAGAGGATTTTTGATGAAGAACCAGCTAATGGAGTGAAGATAGAAAAGTTT
ACAAGGGATGATCCTTGGTTATCTTTCATGTGAAGAAGTGGATGATTGTAAGACCAGTTGGAGAAGCAA
CAGGAAAAACAAGAGATACTTTTGCAGGAAGTGGCATTCACTCAAAGGAAAGCAGTTATTCATGAGAGA
GTCTGCAAAAGTATGAACTGGGGAGAAGAGTGGTCTGAATCCAGTCTATTTTCATCCCCAGTTATA
CCCATAAGAAACCATTTTCATAACATGTATCACATGCTAAAAAATGGCATTAAATGCTGCTGTAAC
AGTCATCAGAAGATTAATGAGAATGAGACTATATGAAAATAATGAATGTGGAAAACCCCTCAGAGC
ATTCACCTTATTCAGTTTACAAGAACTCAAACAAAAGATAAATCCATGGAATTTAGTGACCGTATTCAA
TCTTTTGGCCATGGTACACCCCTACATATACATGAAAAAATTCATGGAGGAGGAAAAACCTTTGATTTT
AAAGAATGTGGGCAGTTTTGAACCCAAAAATATCCCATAAATGAACAACAGAGAATTCCTTTTGAAGAG
AGTCAATATAAATGTAGTGAAACCTCTCATAGTTCCTCCCTTACTCAAAACATGAGAAAATAATTCTGAA
GAGAAACCTTTTGAATGTAATCAGTGTGGGAAATCCTTCAGCTGGAGCTCGCATCTTGTTCACATCAG
AGAACTCACACAGGGGAGAAACCTTATGAATGTAGTGAATGTGGAAAATCCTTCAGCCGGAGCTCGCAC
CTTGTTTCCCATCAGAGAACTCACTGGAGAGAAACCTTACAGGTGAATCAATGTGGGAAATCCTTT
AGCCAGAGTTATGTCCTTGTGTGCATCAAAGAACTCACTGGGGAGAAGCCTTATGAATGCAATCAG
TGTGGAAAAGTCATTCAGGCAGAGCTATAAACTTATTGCACATCAAAGAACACATACCGGAGAGAAGCCC
TATGAATGTAATCAATGTGGGAAATCATTATCCAGAGCTATAAACTTATTGCACATCAAAGAATTCAT
ACTGGGAAAAACCCATGAATGCAATCAGTGTGGGAAATCCTTTAGTCAAAGTTATAAACTTGTGCT
CATCAGAGAACTCACACAGGAGAAAAACCTTTGAATGTAATCAGTGTGGGAAATCCTTCAGCTGGAGC
TCTCAGCTTGTTCACATCAAAGAACTCACACTGGAGAGAAACCGTATGAATGTAGTGAATGTGGAAAA
TCTTTTAACCGCAGTTCTCACCTTGTATGCATCAGAGAATTCACACTGGGGAAAAACCGTATGAATGT
AATCAGTGTGGGAAATCCTTCAGCCAGAGTTATGTTCTTGTGTACATCAGAGAACTCACTGGAGAA
AAGCCCTATGAATGCAGTCAATGTGGGAAAGTCCCTTCAGACAGAGTTCATGCCTTACTCAACATCAGAGA
ACTCACTGGAGAGAAACCATTTGAATGTAATCAGTGTGGAAAACATTTAGCTTGAGTGTCTCGACTT
ATTGTGCATCAAAGAACTCACTGGAGAGAAACCTTTACATGTATTAGTGTGGAAAAGCTTTTCATT
AATAGCTATAAACTTATTAGGCATCAGGCAACTCACTGAAGAGAAACTCTATGAATGTAAC
ACGCGTACGCGGCCGCTCGAG – GFP Tag – GTTTAAAC
```

Protein Sequence: >Peptide sequence encoded by RG239257
 Blue=ORF Red=Cloning site Green=Tag(s)

MEEQDEKPPPEPKVCAQDSFLPQEIIIKVEGEDTGLTIPSEQGVNFKIVTVDFTREEQGTCPAQRRL
 DRDVILENHRDLVSWDLATAVGKDDSTSKQRIFDEEPANGVKIERFTRDDPWLSCEEVDDCKDQLEKQ
 QEKQEILLQEVAFTRKAVIHERVCKSDETEKESGLNSSLFSSPVIPIRNHFHKHVSHAKKWHLNAAVN
 SHQKINENETLYENNECGKPPQSIHLIQFTRTQTKDKSYGFSRDIQSFCHGTPLHIHEKIHGGKTFDF
 KECGQVLNPKISHNEQQRIPFEESQYKCSSETSHSSSLTQNMNRNSEEKPFECNQCGKFSWSSHLVAHQ
 RTHTGEKPYECSECGKFSRSSHLSVSHQRTHTEKPYRCNQCGKFSQSYVLLVHQRTHTGEKPYECNQ
 CGKFSRQSYKLIAHQRTHTGEKPYECNQCGKFSIQSYKLIAHQRIHTGEKPYECNQCGKFSQSYKLVA
 HQRTHTGEKPFECNQCGKFSWSSQLVAHQRTHTGEKPYECSECGKSNRSSHLMVHQRIHTGEKPYEC
 NQCGKFSQSYVLLVHQRTHTGEKPYECNQCGKFSRQSSCLTQHQRTHTEKPFECNQCGKTFSLSARL
 IVHQRTHTGEKPFQCIQCGKAFINSYKLIRHQATHTEEKLYECN
 TRTRPLEMESDESGLPAMEIECRITGTLNGVEFELVGGEGTPEQGRMTNKMKSTKGALTFSPYLLSHV
 MGYGFYHFGTYPGYPENPFLHAINNGYTNTRIEKYEDGGVLHVSFSYRYEAGRVIGDFKVMGTGFPED
 SVIFTDKIIRSNAIVEHLHPMGDNDLDGSFTRTFSLRDGGYSSVVDSHMHFKSAIHPISILQNGGPMFA
 FRRVEEDHSNTELGIVEYQHAFKTPDADAGEERV

Restriction Sites: SgfI-MluI

Cloning Scheme:



ACCN: NM_001291633

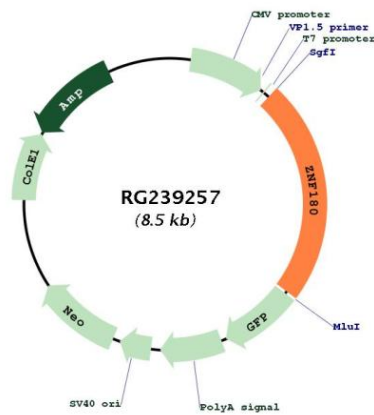
ORF Size: 1995 bp

OTI Disclaimer: The molecular sequence of this clone aligns with the gene accession number as a point of reference only. However, individual transcript sequences of the same gene can differ through naturally occurring variations (e.g. polymorphisms), each with its own valid existence. This clone is substantially in agreement with the reference, but a complete review of all prevailing variants is recommended prior to use. [More info](#)

OTI Annotation: This clone was engineered to express the complete ORF with an expression tag. Expression varies depending on the nature of the gene.

Components:	The ORF clone is ion-exchange column purified and shipped in a 2D barcoded Matrix tube containing 10ug of transfection-ready, dried plasmid DNA (reconstitute with 100 ul of water).
RefSeq:	NM_001291633.2
RefSeq Size:	4259 bp
RefSeq ORF:	1998 bp
Locus ID:	7733
UniProt ID:	Q9UJW8
Cytogenetics:	19q13.31
Protein Families:	Transcription Factors
MW:	76.8 kDa
Gene Summary:	Zinc finger proteins have been shown to interact with nucleic acids and to have diverse functions. The zinc finger domain is a conserved amino acid sequence motif containing 2 specifically positioned cysteines and 2 histidines that are involved in coordinating zinc. Kruppel-related proteins form 1 family of zinc finger proteins. See MIM 604749 for additional information on zinc finger proteins.[supplied by OMIM, Jul 2002]

Product images:



Circular map for RG239257