

## Product datasheet for **RG239256**

### **ZNF180 (NM\_001278509) Human Tagged ORF Clone**

#### **Product data:**

Product Type:	Expression Plasmids
Product Name:	ZNF180 (NM_001278509) Human Tagged ORF Clone
Tag:	TurboGFP
Symbol:	ZNF180
Synonyms:	HHZ168
Mammalian Cell Selection:	Neomycin
Vector:	pCMV6-AC-GFP (PS100010)
E. coli Selection:	Ampicillin (100 ug/mL)



[View online »](#)

ORF Nucleotide  
Sequence:

>RG239256 representing NM\_001278509.  
Blue=ORF Red=Cloning site Green=Tag(s)

```
GCTCGTTTAGTGAACCGTCAGAATTTTGTAAACGACTCACTATAGGGCGGCCGGGAATTCGTGACTG
GATCCGGTACCGAGGAGATCTGCCGCCACGATCGCC
ATGGAAGAGCAGGATGAGAAGCCCCAGAGCCCCGAAGTCTGTGCACAGGATTCTTCCCTCCTCAA
GAGATTATCATCAAAGTCGAGGGAGAAGACACTGGGTCTCTGACCATCCCATCTCAGGAAGGAGTGAAC
TTCAAAATTGTGACTGTGGACTTCACACGGGAGGAACAGGGTACTTGCAACCCTGCTCAGAGGACCCTG
GACAGAGATGTGATCCTGGAGAACCACAGGGACCTAGTCTCTTGGGACTTGGCAACTGCAGTTGGAAAA
AAAGATTCAACTTCAAAGCAGAGGATTTTTGATGAAGAACCAGCTAATGGAGTGAAGATAGAAAAGTTT
ACAAGGGATGATCCTTGGTTATCTTTCATGTGAAGAAGTGGATGATTGTAAGACCAGTTGGAGAAGCAA
CAGGAAAAACAAGAGATACTTTTGCAGGAAGTGGCATTCACTCAAAGGAAAGCAGTTATTCATGAGAGA
GTCTGCAAAAGTGAATGAACTGGGGAGAAGAGTGGTCTGAATCCAGTCTATTTTCATCCCCAGTTATA
CCCATAAGAAACCATTTTCATAACATGTATCACATGCTAAAAATGGCATTAAATGCTGCTGTAAC
AGTCATCAGAAGATTAATGAGAATGAGACTATATGAAAATAATGAATGTGGAAAACCCCTCAGAGC
ATTCACCTTATTCAGTTTACAAGAACTCAAACAAAAGATAAATCCATGGAATTTAGTGACCGTATTCAA
TCTTTTGGCCATGGTACACCCCTACATATACATGAAAAAATTCATGGAGGAGGAAAAACCTTTGATTTT
AAAGAATGTGGGCAGTTTTGAACCCAAAAATATCCCATAAATGAACAACAGAGAATTCCTTTTGAAGAG
AGTCAATATAAATGTAGTGAAACCTCTCATAGTTCCTCCCTTACTCAAAACATGAGAAAATAATTCTGAA
GAGAAACCTTTTGAATGTAATCAGTGTGGGAAATCCTTCAGCTGGAGCTCGCATCTTGTGACATCAG
AGAACTCACACAGGGGAGAAACCTTATGAATGTAGTGAATGTGGAAAATCCTTCAGCCGGAGCTCGCAC
CTTGTTTCCCATCAGAGAACTCACTGGAGAGAAACCTTACAGGTGAATCAATGTGGGAAATCCTTT
AGCCAGAGTTATGTCCTTGTGTGCATCAAAGAACTCACTGGGGAGAAGCCTTATGAATGCAATCAG
TGTGGAAAGTCATTCAGGCAGAGCTATAAACTTATTGCACATCAAAGAACACATACCGGAGAGAAGCCC
TATGAATGTAATCAATGTGGGAAATCATTATCCAGAGCTATAAACTTATTGCACATCAAAGAATTCAT
ACTGGGAAAAACCCATGAATGCAATCAGTGTGGGAAATCCTTTAGTCAAAGTTATAAACTTGTGCT
CATCAGAGAACTCACACAGGAGAAAAACCTTTGAATGTAATCAGTGTGGGAAATCCTTCAGCTGGAGC
TCTCAGCTTGTGACATCAAAGAACTCACACTGGAGAGAAACCGTATGAATGTAGTGAATGTGGAAAA
TCTTTTAAACCGCAGTTCTCACCTTGTATGCATCAGAGAATTCACACTGGGGAAAAACCGTATGAATGT
AATCAGTGTGGGAAATCCTTCAGCCAGAGTTATGTTCTTGTGTACATCAGAGAACTCACTGGAGAA
AAGCCCTATGAATGCAGTCAATGTGGGAAAGTCTTCAGACAGAGTTCATGCCTTACTCAACATCAGAGA
ACTCACTGGAGAGAAACCATTTGAATGTAATCAGTGTGGAAAAACATTTAGCTTGAGTGTCTCGACTT
ATTGTGCATCAAAGAACTCACTGGAGAGAAACCTTTACATGTATTAGTGTGGAAAAGCTTTTCATT
AATAGCTATAAATTTAGGCATCAGGCAACTCACTGAAGAGAAACTCTATGAATGTAAC
ACGCGTACGCGGCCGCTCGAG - GFP Tag - GTTTAAAC
```

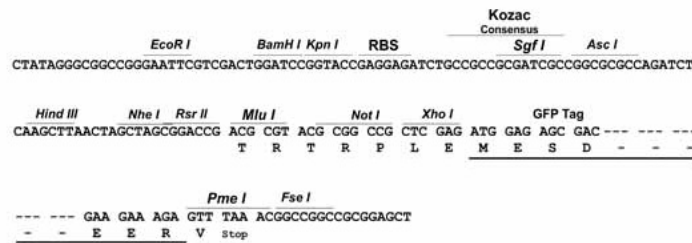
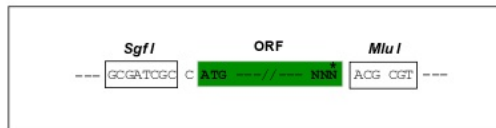
**Protein Sequence:** >Peptide sequence encoded by RG239256  
 Blue=ORF Red=Cloning site Green=Tag(s)

MEEQDEKPPPEPKVCAQDSFLPQEIIIKVEGEDTGLTIPSEQGVNFKIVTVDFTREEQGTCPAQRRL  
 DRDVILENHRDLVSWDLATAVGKDDSTSKQRIFDEEPANGVKIERFTRDDPWLSCEEVDDCKDQLEKQ  
 QEKQEILLQEVAFTQRKAVIHERVCKSDETEKESGLNSSLFSSPVIPIRNHFHKHVSHAKKWHLNAAVN  
 SHQKINENETLYENNECGKPPQSIHLIQFTRTQTKDKSYGFSDRIQSFCHGTPLHIHEKIHGGGKTFDF  
 KECGQVLNPKISHNEQQRIPFEESQYKCSSETSHSSSLTQNMNRNSEEKPFECNQCGKFSWSSHLVAHQ  
 RTHTGEKPYECSECGKFSRSSHLSVSHQRTHTEKPYRCNQCGKFSQSYVLLVHQRTHTEKPYECNQ  
 CGKFSRQSYKLIAHQRTHTGEKPYECNQCGKFSIQSYKLIAHQRIHTGEKPYECNQCGKFSQSYKLVA  
 HQRTHTGEKPFECNQCGKFSWSSQLVAHQRTHTGEKPYECSECGKSNRSSHLMVHQRIHTGEKPYEC  
 NQCGKFSQSYVLLVHQRTHTEKPYECNQCGKFSRQSSCLTQHQRTHTEKPFECNQCGKTFSLSARL  
 IVHQRTHTEKPFQCIQCGKAFINSYKLIRHQATHTEEKLYECN  
 TRTRPLEMESDESGLPAMEIECRITGTLNGVEFELVGGGEGTPEQGRMTNKMKSTKGALTFSPYLLSHV  
 MGYGFYHFGTYPGYPENPFLHAINNGGYNTRIEKYEDGGVLHVSFSYRYEAGRVIGDFKVMGTGFPED  
 SVIFTDKIIRSNAIVEHLHPMGDNDLDGSFTRTFSLRDGGYSSVVDSHMHFKSAIHPISILQNGGPMFA  
 FRRVEEDHSNTELGIVEYQHAFKTPDADAGEERV

**Restriction Sites:** SgfI-MluI

**Cloning Scheme:**

Cloning sites used for ORF Shuttling:



**ACCN:** NM\_001278509

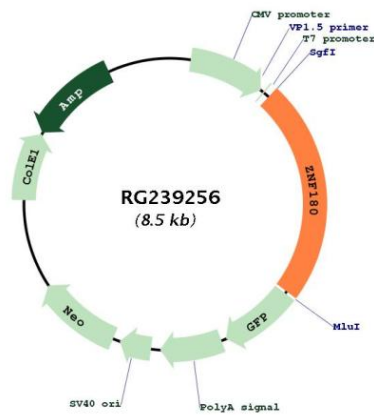
**ORF Size:** 1995 bp

**OTI Disclaimer:** The molecular sequence of this clone aligns with the gene accession number as a point of reference only. However, individual transcript sequences of the same gene can differ through naturally occurring variations (e.g. polymorphisms), each with its own valid existence. This clone is substantially in agreement with the reference, but a complete review of all prevailing variants is recommended prior to use. [More info](#)

**OTI Annotation:** This clone was engineered to express the complete ORF with an expression tag. Expression varies depending on the nature of the gene.

<b>Components:</b>	The ORF clone is ion-exchange column purified and shipped in a 2D barcoded Matrix tube containing 10ug of transfection-ready, dried plasmid DNA (reconstitute with 100 ul of water).
<b>RefSeq:</b>	<a href="#">NM_001278509.3</a>
<b>RefSeq Size:</b>	4264 bp
<b>RefSeq ORF:</b>	1998 bp
<b>Locus ID:</b>	7733
<b>UniProt ID:</b>	<a href="#">Q9UJW8</a>
<b>Cytogenetics:</b>	19q13.31
<b>Protein Families:</b>	Transcription Factors
<b>MW:</b>	76.8 kDa
<b>Gene Summary:</b>	Zinc finger proteins have been shown to interact with nucleic acids and to have diverse functions. The zinc finger domain is a conserved amino acid sequence motif containing 2 specifically positioned cysteines and 2 histidines that are involved in coordinating zinc. Kruppel-related proteins form 1 family of zinc finger proteins. See MIM 604749 for additional information on zinc finger proteins.[supplied by OMIM, Jul 2002]

**Product images:**



Circular map for RG239256