

Product datasheet for **RG239254**

Rho GTPase activating protein 24 (ARHGAP24) (NM_001287805) Human Tagged ORF Clone

Product data:

Product Type:	Expression Plasmids
Product Name:	Rho GTPase activating protein 24 (ARHGAP24) (NM_001287805) Human Tagged ORF Clone
Tag:	TurboGFP
Symbol:	ARHGAP24
Synonyms:	FILGAP; p73; p73RhoGAP; RC-GAP72; RCGAP72
Mammalian Cell Selection:	Neomycin
Vector:	pCMV6-AC-GFP (PS100010)
E. coli Selection:	Ampicillin (100 ug/mL)



[View online »](#)

ORF Nucleotide Sequence:

>RG239254 representing NM_001287805.
 Blue=ORF Red=Cloning site Green=Tag(s)

```
GCTCGTTTAGTGAACCGTCAGAATTTTGTAAACGACTCACTATAGGGCGGCCGGGAATTCGTGCACTG
GATCCGGTACCGAGGAGATCTGCCGCCCGATCGCC
ATGTTTGTGCAAGGAGGCGATCGAGATCGGATGACAGCAAATCATGAAAGCTACCTCCTCATGGCAAGC
ACCCAGAATGATATGGAAGACTGGTGAAGTCAATCCGCCGAGTCATATGGGACCTTTTCGGAGGAGGC
ATTTTGGACAGAACTGGAGGATACTGTTTCGTTATGAGAAGAGATATGGGAACCGTCTGGCTCCGATG
TTGGTGGAGCAGTGCGTGGACTTTATCCGACAAAGGGGGCTGAAAGAAGAGGGTCTCTTTGCACTGCCA
GGCCAGGCTAATCTTGTTAAGGAGCTCCAAGATGCCTTTGACTGTGGGAGAAGCCATCATTGACAGC
AACACAGATGTACACACGGTGGCATCACTTCTTAAGCTGTACCTCCGAGAACTCCAGAACCAGTTATT
CCTTATGCGAAGTATGAAGATTTTTGTCATGTGCCAACTGCTCAGCAAGGAAGAGGAAGCAGGTGTT
AAGGAATTAGCAAAGCAGGTGAAGATTTGCCAGTGGTAAATTACAACCTCCTCAAGTATATTTGCAGA
TTCTTGGATGAAGTACAGTCTACTCGGAGTTAACAAAATGAGTGTGCAGAACTGGCAACGGTCTTT
GGTCTAATATCCTGCGCCCCAAAGTGAAGATCCTTTGACTATCATGGAGGGCACTGTGGTGGTCCAG
CAGTTGATGTGATGATTAGCAAACATGATTGCCTCTTTCCCAAAGATGCAGAACTACAAGCAAG
CCCAAGATGGAGTGAGCAACAACAATGAAATTCAGAAGAAAGCCACCATGGGGCAGTTACAGAACAAG
GAGAACAATAACCAAGGACAGCCCTAGTAGGCAGTGTCTCTGGGACAAGTCTGAGTCACCCCAGAGA
AGCAGCATGAACAATGGATCCCCACAGCTCTATCAGGCAGCAAAACCAAGCCAAAGAACAGTGTT
CACAAGCTAGATGTGTCTAGAAGCCCCCTCTCATGGTCAAAAAGAACCCAGCCTTTAATAAGGGTAGT
GGGATAGTTACCAATGGTCTTCAGCAGCAGTAATGCAGAAGGTCTTGAGAAAACCCAAACCACCCC
GTACAGAATGGAACGGTGCATGGGCATTTTGAACAGCGACACACTCGGGAACCCACAATGTTTGA
AACATGAGCTGGCTGCCAAATGGCTATGTGACCCTGAGGGATAACAAGCAGAAAGAACAAGCTGGAGAG
TTAGGCCAGCACAAACAGACTGTCCACCTATGATAATGTCCATCAACAGTTCTCCATGATGAACCTTGAT
GACAAGCAGAGCATTGACAGTGTACTCTGGTCCACTTCTCTGTGAAATCTCCCTCCCTGAGAACTCC
AACTCCTGTGCTCTTCTACCACCCTGCCAGAGCAAGACTTTTTTGGGGGAACTTTGAGGACCCT
GTTTTGGATGGGCCCCGCAGGACGACCTTTCCACCCAGGGACTATGAAAGCAAAAGTGACCACAGG
AGTGTGGGAGTCAAGTAGTCTGTCACCAGTAGCAGTGACAACAGTGAGACATTTGTGGCAACAGC
AGCAGCAACCACAGTGCCTGCACAGTTTAGTTTCCAGCCTGAAACAGGAAATGACCAACAGAAGATA
GAGTATGAGTCCAGGATAAAGAGCTTAGAACAGCGAAACTTGACTTTGAAACAGAAATGATGAGCCTC
CATGATGAACTGGATCAGGAGAGGAAAAAGTTCAATGATAGAAATAAAAATGCGAAATGCCGAGCGA
GCAAAAGAAGATGCCGAGAAAAGAAATGACATGCTACAGAAAGAAATGGAGCAGTTTTTTCCACGTTT
GGAGAAGTGCAGTGGAAACCCAGGAGAACCAGAGAGGAAACACAATATGGATTACG
ACCGGTACGCGGCCGCTCGAG - GFP Tag - GTTTAAAC
```

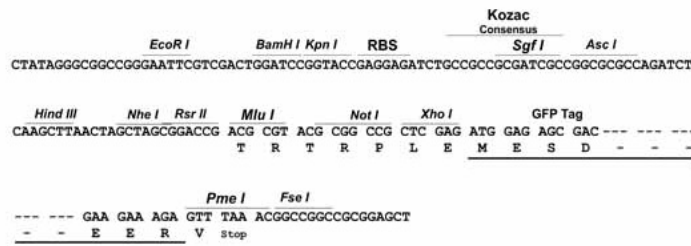
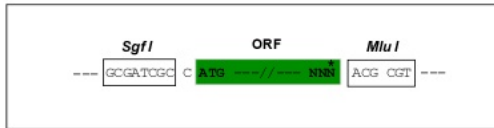
Protein Sequence: >Peptide sequence encoded by RG239254
 Blue=ORF Red=Cloning site Green=Tag(s)

MFVQGGDRDRMTANHESYLLMASTQNDMEDWVKSIRRVIWGPFGGGIFGQKLEDTVRYEKRYGNRLAPM
 LVEQCVD FIRQRLKEEGLFRLPGQANLVKELQDAFDCGEKPSFDSNTDVHTVASLLKLYLRELPEPVI
 PYAKYEDFLSCAKLLSKEEEAGVKELAKQVKSLPVVNYNLLKYICRFLDEVQSYSGVKNMSVQNLATVF
 GPNILRPKVEDPLTIMEGTVVVQQLMSVMI SKHDCLFPKDAELQSKPQDGVSNNEIQKKATMGQLQNK
 ENNNTKDSPSRQCSWDKSESPQRSMMNGSPTALSGSKTNSPKNSVHKLDVSRSPPLMVKKNP AFNKGS
 GI VTNGSFSSSNAEGLKQTTPNGSLQARRSSSLKVS GTKMGTHSVQNGTVRMGILNSDTLGNPTNVR
 NMSWLPNGYVTLRDNKQKEQAGELGQHNRLSTYDNVHQQFSMMNLDDKQSIDSATWSTSSCEISLPENS
 NSCRSSTTTCPEQDFGGNFEDPVL DGGPQDDL SHPRDYESKSDHRSVGGRSSRATSSSDNSETFVGN
 SSNHSALHSLVSSLQEMTKQKIEYESRIKSLEQRNLTLETMMSLHDELDQERKKFTMIEIKMRNAER
 AKEDAERNDMLQKEMEQQFFSTFGELTVEPRRTERGNTIWIQ
 TRTRPLEMESDEGLPAMEIECRITGTLNGVEFELVGGGEGTPEQGRMTNKMKSTKGALTFSPYLLSHV
 MGYGFYHFGTYPSTYENPFLHAINNGGYTNTRIEKYEDGGVLHVSFSYRYEAGRVIGDFKVMGTGFPEP
 SVIFTDKIIRS NATVEHLHPMGDNDLDGSFTRTFLRDGGYYSSVVD SHMHFKSAIHP SILQNGGPMFA
 FRRVEEDHSNTELGIVEYQHAFKTPDADAGEERV

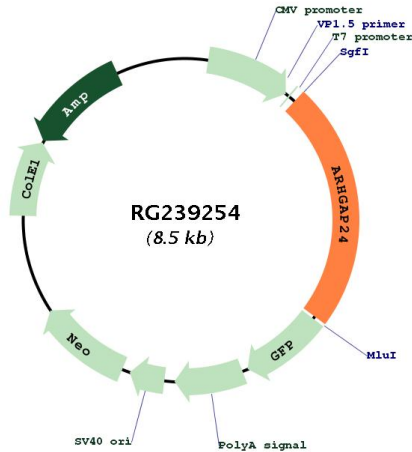
Restriction Sites: SgfI-MluI

Cloning Scheme:

Cloning sites used for ORF Shuttling:



Plasmid Map:



ACCN:	NM_001287805
ORF Size:	1989 bp
OTI Disclaimer:	The molecular sequence of this clone aligns with the gene accession number as a point of reference only. However, individual transcript sequences of the same gene can differ through naturally occurring variations (e.g. polymorphisms), each with its own valid existence. This clone is substantially in agreement with the reference, but a complete review of all prevailing variants is recommended prior to use. More info
OTI Annotation:	This clone was engineered to express the complete ORF with an expression tag. Expression varies depending on the nature of the gene.
Components:	The ORF clone is ion-exchange column purified and shipped in a 2D barcoded Matrix tube containing 10ug of transfection-ready, dried plasmid DNA (reconstitute with 100 ul of water).
RefSeq:	NM_001287805.2
RefSeq Size:	4010 bp
RefSeq ORF:	1992 bp
Locus ID:	83478
Cytogenetics:	4q21.23-q21.3
MW:	74.9 kDa

Gene Summary:

This gene encodes a Rho-GTPase activating protein, which is specific for the small GTPase family member Rac. Binding of the encoded protein by filamin A targets it to sites of membrane protrusion, where it antagonizes Rac. This results in suppression of lamellae formation and promotion of retraction to regulate cell polarity. Alternative splicing results in multiple transcript variants. [provided by RefSeq, Sep 2016]