

## Product datasheet for **RG239253**

### **HJURP (NM\_001282963) Human Tagged ORF Clone**

#### **Product data:**

Product Type:	Expression Plasmids
Product Name:	HJURP (NM_001282963) Human Tagged ORF Clone
Tag:	TurboGFP
Symbol:	HJURP
Synonyms:	FAKTS; hFLEG1; URLC9
Mammalian Cell Selection:	Neomycin
Vector:	pCMV6-AC-GFP (PS100010)
E. coli Selection:	Ampicillin (100 ug/mL)



[View online »](#)

**ORF Nucleotide Sequence:**

>RG239253 representing NM\_001282963.  
 Blue=ORF Red=Cloning site Green=Tag(s)

```

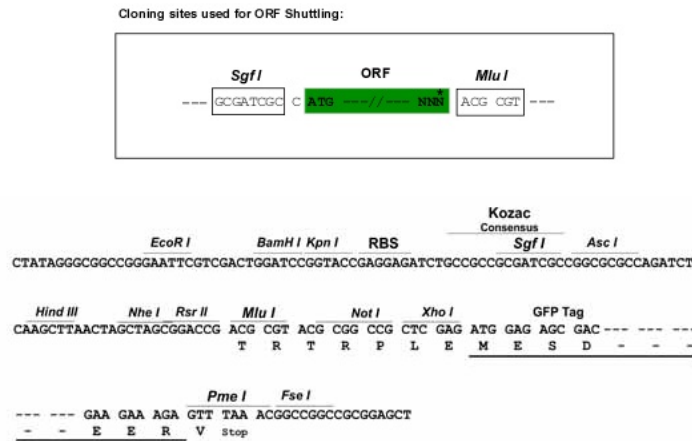
GCTCGTTTAGTGAACCGTCAGAATTTTGTAAACGACTCACTATAGGGCGGCCGGGAATTCGTGACTG
GATCCGGTACCGAGGAGATCTGCCGCCCGCATCGCC
ATGCTGGGTACGCTGCGGCCATGGAGGGCGAGGACGTGGAAGACGACCAGCTGCTGCAGAAGCTCAGG
GCCAGTCGCCCGCGCTTCCAGAGGCGCATGCAGCGGCTGATAGAGAAGTACAACCAGCCCTTCGAGGAC
ACCCCGGTGGTGCAAATGGCCACGCTGACCTACGAGACGCCACAGGGATTGAGAATTTGGGTGGAAGA
CTAATAAAGGAAAAGAAACGAAGGAGAGATCCAGTGTGCAGGTAACAGAGCTGGAAGGGATGTACGTGTG
ACTCCGCTGCCTTCACTGGCCTCACCTGCCGTGCCTGCCCGGATACTGCAGTCGTATCTCCAGAAAG
AGTCTGGTGACCCAGCGAAACCAGCTTCATCTCCAGAGAATGGGATCCTTTGCATCCTTCTCCACA
GACATGGCCTTAGTACCTAGAAATGACAGCCTCTCCCTACAAGAGACCAGTAGCAGCAGCTTCTTAAGC
AGCCAGCCCTTTGAAGATGATGACATTTGCAATGTGACCATCAGTGACCTGTACGCAGGGATGCTGCAC
TCCATGAGCCGGCTGTTGAGCACAAAGCCATCAAGCATCATCTCCACAAAACGTTTCATCATGCAAAAC
TGGAACTCCAGGAGGACAGATATAAGAGCAGGATGAACAAAACATATTGCAAGGAGCCAGACGT
TCTCAGAGGAGCTCCAAGGAGAACTTCATACCCTGCTCTGAGCCTGTGAAAGGGACAGGGCATTAGA
GATTGCAAGAACGTATTAGATGTTTCTGCCGTAAGACAGGTTTAAAATTGGAAAAAGCTTTTCTTGAA
GTCAACAGACCCCAAATCCATAAGTTAGATCCAAGTTGGAAGGAGCGCAAAGTGACACCCTCGAAGTAT
TCTTCCTTGATTTACTTCGACTCCAGTGAACATATAATCTTGATGAGGAAAATAGATTTAGGACATTA
AAATGGTTAATTTCTCTGTAAAAATAGTTTCCAGACCAACAATACGACAGGGCCATGGAGAGAACCCT
CAGAGGGAGATTGAAATCCGATTTGATCAGCTTCATCGGAATATTGCCCTGAGTCCAGGAACCAGCCT
CGCCGGATGTGCCTCCCGACTCCTGGCCATGAACATGTACAGAGGGGTCTGCGAGTCTGGTGGC
CTTCAGGGCTTAGAAACCCGAGGCTGAGTTTACCTTCCAGCAAAGCAAAGCAAAGTTTAAGTGAG
GCTTTTAAAAACCTAGGCAAAGATCTCTGGAAGCAGGTAGGTGCCTGCCAAGAGCGATTTCATCTCA
TCACTTCAAAGACCAACCCACACACAGCGCAACTCGCCCGCAGCAGACATCTGACCTTACGTTGAG
GGAAATAGTTCTGGAATATTTAGAAAGTCAAGTGTACCCAGCAAACCTCTTTCAGTCCCAGATAAAGAA
GTGCCAGGCCACGGAAGGAATCGTTACGATGAAATTAAGAAGAATTTGACAAGCTTCATCAAAGTAT
TGCCTCAAATCTCTGGCAGATGACAGTGCTTTATGTATTGGAGTGTCTACAGATAAAGCAAGTATG
GAAGTTCGATATCAAACAGAAGGCTTCTTAGGAAAATTAATCCAGACCCTCACTCCAGGGTTCCAG
AAGTTGCCATCATACCCCTGGGGTGCAGAAAAAGTCTACTGGGCTCACTGCAATTGAGGCTCCTTCA
TCTACATGTGTTGCTCGTCCATCACGAGGGATGGCACGAGGGACCATCAGTTCCCTGCAAAAAGACCC
AGGCTATCAGAACCCAGGGCTCCGGACGCCAGGCAATTCCTGGGTGCCTCAGATGGGTGGACAAAC
ACCGTCAGACCGGAGACCAGGGCAGCTTTCACAGCCAACTCAGAAGAGAGAGGAGAGAACACGTCT
TACAGGATGGAAGAGAAAAGTGATTTTCATGCTAGAAAAATGGAAACTAAAAGTGTG
ACCGGTACGCGGCCGCTCGAG - GFP Tag - GTTTAAAC
  
```

**Protein Sequence:** >Peptide sequence encoded by RG239253  
 Blue=ORF Red=Cloning site Green=Tag(s)

MLGTLRAMEGEDVEDDQLLQKLASRRRFQRRMQRLIEKYNQPFEDTPVVQMATLTYETPQGLRIWGGR  
 LIKERNEGEIQCAGNRAGRDRVVTPLPSLASPVPAPGYCSRISRKSPGDPAPKPASSPREWDPLHPSST  
 DMALVPRNDSLQETSSSSFLSSQPFEDDDICNVTISDLYAGMLHMSRLLSTKPSSIIISTKTFIMQN  
 WNSRRRHRYSRMNKTYCKGARRSQRSSKENIFPCSEPVKGTGALRDCKNVLDVSCRKTGLKLEKAFLE  
 VNRYPQIHKLDPSWKERKVTPSKYSSLIYFDSSATYNLDEENRFRLLKWLISPVKIVSRPTIRQGHGENR  
 QREIEIRFDQLHREYCLSPRNQPRRMCLPDSWAMNMYRGGPASPGLQGLETRRLSLPSSKAKAKSLSE  
 AFENLGRSLEAGRCLPKSDSSSLPKTNPTHSA TRPQQTSDLHVQGNSSGIFRKSVPSPKTL SVPDKE  
 VPGHGRNRYDEIKEEFDKLHQKYCLKSPGQMTVPLCIGVSTDKASMEVRYQTEGFLGKLNPDPHFQGFQ  
 KLPSSPLGCRKSLLGSTAEAPSSCVARAITRDGTRDHFPAKRPRLSEPOGSGRQGNL GASDGVDN  
 TVRPGDQGSSSQPNSEERGENTS YRMEEK SDFMLEKLETKSV  
 TRTRPLEMESDEGLPAMEIECRITGTLNGVEFELVGGGEGTPEQGRMTNKMSTKGALTFSPYLLSHV  
 MGYGFYHFGTYP SGYENPFLHAINNGGYTNTRIEKYEDGGVLHVSFSYRYEAGRVIGDFKVMGTGFPED  
 SVIFTDKIIRS NATVEHLHPMGDNDLDGSFTRTFLRDGGYYSSVVD SHMHFKSAIHP SILQNGGPMFA  
 FRRVEEDHSNTELGIVEYQHAFKTPDADAGEERV

**Restriction Sites:** SgfI-MluI

**Cloning Scheme:**



**ACCN:** NM\_001282963

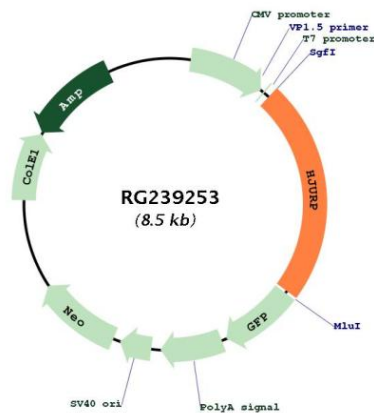
**ORF Size:** 1989 bp

**OTI Disclaimer:** The molecular sequence of this clone aligns with the gene accession number as a point of reference only. However, individual transcript sequences of the same gene can differ through naturally occurring variations (e.g. polymorphisms), each with its own valid existence. This clone is substantially in agreement with the reference, but a complete review of all prevailing variants is recommended prior to use. [More info](#)

**OTI Annotation:** This clone was engineered to express the complete ORF with an expression tag. Expression varies depending on the nature of the gene.

<b>Components:</b>	The ORF clone is ion-exchange column purified and shipped in a 2D barcoded Matrix tube containing 10ug of transfection-ready, dried plasmid DNA (reconstitute with 100 ul of water).
<b>RefSeq:</b>	<a href="#">NM_001282963.1</a> , <a href="#">NP_001269892.1</a>
<b>RefSeq Size:</b>	2934 bp
<b>RefSeq ORF:</b>	1992 bp
<b>Locus ID:</b>	55355
<b>UniProt ID:</b>	<a href="#">Q8NCD3</a>
<b>Cytogenetics:</b>	2q37.1
<b>Protein Families:</b>	Druggable Genome
<b>MW:</b>	74.8 kDa
<b>Gene Summary:</b>	Centromeric protein that plays a central role in the incorporation and maintenance of histone H3-like variant CENPA at centromeres. Acts as a specific chaperone for CENPA and is required for the incorporation of newly synthesized CENPA molecules into nucleosomes at replicated centromeres. Prevents CENPA-H4 tetramerization and prevents premature DNA binding by the CENPA-H4 tetramer. Directly binds Holliday junctions.[UniProtKB/Swiss-Prot Function]

**Product images:**



Circular map for RG239253