

Product datasheet for **RG239248**

PDE4 (PDE4B) (NM_001297441) Human Tagged ORF Clone

Product data:

Product Type:	Expression Plasmids
Product Name:	PDE4 (PDE4B) (NM_001297441) Human Tagged ORF Clone
Tag:	TurboGFP
Symbol:	PDE4
Synonyms:	DPDE4; PDEIVB
Mammalian Cell Selection:	Neomycin
Vector:	pCMV6-AC-GFP (PS100010)
E. coli Selection:	Ampicillin (100 ug/mL)



[View online »](#)

ORF Nucleotide
Sequence:

>RG239248 representing NM_001297441.
Blue=ORF Red=Cloning site Green=Tag(s)

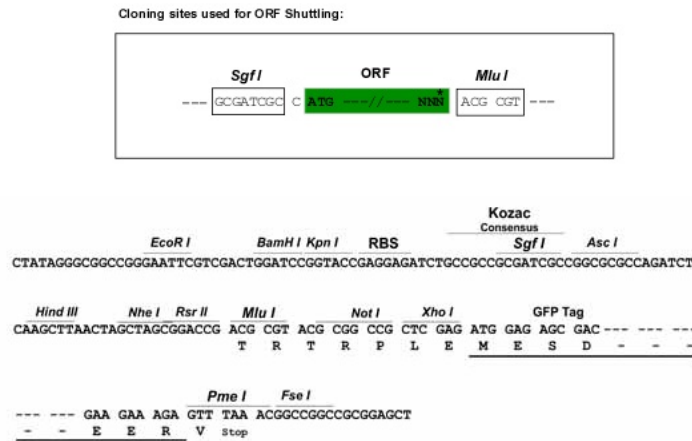
```
GCTCGTTTAGTGAACCGTCAGAATTTTGTAAACGACTCACTATAGGGCGGCCGGGAATTCGTGCGACTG
GATCCGGTACCGAGGAGATCTGCCGCCACGATCGCC
ATGAAGAAAAGCAGGAGTGTGATGACGGTGTGGCTGATGATGTAATTTTAAAGAACTTTGATGTGGAA
AATGGCCCTTCCCAGGTCGGAGTCCACTGGATCCCCAGGCCAGCTCTTCCGCTGGGCTGGTACTTCAC
GCCACCTTTCCTGGGCACAGCCAGCGCAGAGAGTCATTTCTCTACAGATCAGACAGCGACTATGACTTG
TCACCAAAGGCGATGTCGAGAACTCTTCTCTTCCAAGCGAGCAACACGGCGATGACTTGATTGTAAC
CCTTTTGGCCAGGTCCTTGCCAGCTTGCGAAGTGTGAGAAAACAACTTCACTATACTGACAAAACCTTCAT
GGTACATCTAACAAAGAGGTCCCCAGCTGCTAGTCAGCCTCCTGTCTCCAGAGTCAACCCACAAGAAGAA
TCTTATCAAAAATTAGCAATGGAACGCTGGAGGAATTAGACTGGTGTTTAGACCAGCTAGAGACCATA
CAGACCTACCGGTCTGTCACTGAGATGGCTTCAACAAGTTCAAAGAATGCTGAACCGGGAGCTGACA
CACCTCTCAGAGATGAGCCGATCAGGGAACAGGTGTCTGAATACATTTCAAATACTTTCTTAGACAAG
CAGAATGATGTGGAGATCCCATCTCCTACCCAGAAAGACAGGGAGAAAAAGAAAAAGCAGCAGCTCATG
ACCCAGATAAGTGGAGTGAAGAAATTAATGCATAGTTCAAGCCTAAACAATACAAGCATCTCACGCTTT
GGAGTCAACACTGAAAATGAAGATCACCTGGCCAAGGAGCTGGAAGACCTGAACAATGGGGTCTTAAC
ATCTTTAATGTGGCTGGATATTCTCACAATAGACCCCTAACATGCATCATGTATGCTATATTCCAGGAA
AGAGACCTCCTAAAGACATTCAGAATCTCATCTGACACATTTATAACCTACATGACTTTAGAAGAC
CATTACCATTCTGACGTGGCATAACACAACAGCCTGCACGCTGCTGATGTAGCCAGTCGACCCATGTT
CTCCTTCTACACCAGCATTAGACGCTGTCTTACAGATTTGGAGATCCTGGCTGCCATTTTGCAGCT
GCCATCCATGACGTTGATCATCTGGAGTCTCCAATCAGTTTCTCATCAACACAAATTCAGAATCTGCT
TTGATGTATAATGATGAATCTGTGTTGGAAAATCATCACCTTGCTGTGGGTTTCAAACCTGCTCAAGAA
GAACACTGTGACATCTTCATGAATCTACCAAGAAGCAGCGTCAGACACTCAGGAAGATGGTTATTGAC
ATGGTGTAGCAACTGATATGTCTAAACATATGAGCCTGCTGGCAGACCTGAAGACAATGGTAGAAACG
AAGAAAGTTACAAGTTCAGGCGTCTTCTCCTAGACAACATAACCGATCGCATTAGGTCCTTCGCAAC
ATGGTACACTGTGACAGCCTGAGCAACCCACCAAGTCTTGGAAATGATCGGCAATGGACAGACCCGC
ATCATGGAGGAATTTTCCAGCAGGGAGACAAAGAGCGGGAGAGGGGAATGGAAATAGCCCAATGTGT
GATAAACACACAGCTTCTGTGAAAAATCCCAGGTTGGTTTCATCGACTACATTGTCATCCATTGTGG
GAGACATGGGCAGATTTGGTACAGCCTGATGCTCAGGACATTCTCGATACCTTAGAAGATAACAGGAAC
TGGTATCAGAGCATGATACCTCAAAGTCCCTCACCACCACTGGACGAGCAGAACAGGGACTGCCAGGGT
CTGATGGAGAAGTTTCAGTTTGAAGTACTCTCGATGAGGAAGATTCTGAAGACCTGAGAAGGAGGGA
GAGGGACACAGCTATTTAGCAGCACAAGACGCTTTGTGTGATTGATCCAGAAAACAGAGATCCCTG
GGAGAGACTGACATAGACATTGCAACAGAAGACAAGTCCCCCGTGGATACA
ACCGGTACGCGGCCGCTCGAG - GFP Tag - GTTTAAAC
```

Protein Sequence: >Peptide sequence encoded by RG239248
 Blue=ORF Red=Cloning site Green=Tag(s)

MKKSRSVMTVMADDVILKNFDVENGPSGRSPLDPQASSAGLVLHATFPGHSQRRESFLYRSDSDYDL
 SPKAMSRNSSLPSEQHGDDLIVTPFAQVLASLRSVRNNFTILTNLHGTSNKRSPAASQPPVSRVNPQEE
 SYQKLAMETLEELDWCLDQLETIQTYRSVSEMASNKFKRMLNRELTHLSEMSRSGNQVSEYISNTFLDK
 QNDVEIPSPTQKDREKKKQQLMTQISGVKMLMHSSLNNTSISRFVNTENEDHLAKELEDLNKWLGN
 IFNVAGYSHNRPLTCIMYAIQERDLLKTRISSDFTITYMMTLEDHYHSDVAYHNSLHAADVAQSTHV
 LLSTPALDAVFTDLEILAAIFAAAIHDVDHPGVSQFLINTNSELALMYNDESVLENHHLAVGFKLLQE
 EHCIDIFMNLTKKQRQTLRKMVIDMVLATMSKHMSLLADLKTMTVETKVTSSGVLLLDNYTDRIQVLRN
 MVHCADLSNPTKSLELYRQWTRIMEEFFQQGDKERERGMESIPMCDKHTASVEKSQVGFIDYIVHPLW
 ETWADLVQPDADILDTELDNRNRYQSMIPQSPSPPLDEQNRDCQGLMEKFQFELTLDEEDSEGPEKEG
 EGHYSFSSTKTLCVIDPENRDSLGETDIDIATEDKSPVDT
 TRTRPLEMESDESGLPAMEIECRITGTLNGVEFELVGGGEGTPEQGRMTNKMKSTKGALTFSPYLLSHV
 MGYGFYHFGTYPSTYENPFLHAINNGGYTNTRIEKYEDGGVLHVSFSYRYEAGRVIGDFKVMGTGFPED
 SVIFTDKIIRSNAIVEHLHPMGDNDLDGSFTRTFSLRDGGYSSVVDSHMHFKSAIHPISILQNGGPMFA
 FRRVEEDHSNTELGIVEYQHAFKTPDADAGEERV

Restriction Sites: SgfI-MluI

Cloning Scheme:



ACCN: NM_001297441

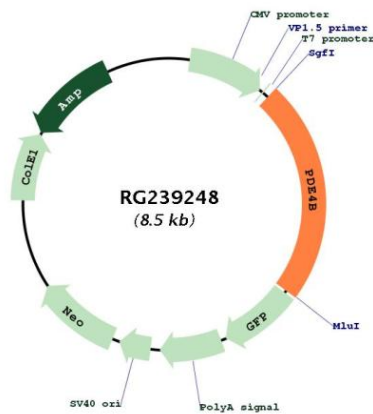
ORF Size: 1983 bp

OTI Disclaimer: The molecular sequence of this clone aligns with the gene accession number as a point of reference only. However, individual transcript sequences of the same gene can differ through naturally occurring variations (e.g. polymorphisms), each with its own valid existence. This clone is substantially in agreement with the reference, but a complete review of all prevailing variants is recommended prior to use. [More info](#)

OTI Annotation: This clone was engineered to express the complete ORF with an expression tag. Expression varies depending on the nature of the gene.

Components:	The ORF clone is ion-exchange column purified and shipped in a 2D barcoded Matrix tube containing 10ug of transfection-ready, dried plasmid DNA (reconstitute with 100 ul of water).
RefSeq:	<u>NM_001297441.1, NP_001284370.1</u>
RefSeq Size:	3963 bp
RefSeq ORF:	1986 bp
Locus ID:	5142
UniProt ID:	<u>Q07343</u>
Cytogenetics:	1p31.3
Protein Families:	Druggable Genome
Protein Pathways:	Progesterone-mediated oocyte maturation, Purine metabolism
MW:	75.6 kDa
Gene Summary:	This gene is a member of the type IV, cyclic AMP (cAMP)-specific, cyclic nucleotide phosphodiesterase (PDE) family. The encoded protein regulates the cellular concentrations of cyclic nucleotides and thereby play a role in signal transduction. Altered activity of this protein has been associated with schizophrenia and bipolar affective disorder. Alternative splicing and the use of alternative promoters results in multiple transcript variants encoding different isoforms. [provided by RefSeq, Jul 2014]

Product images:



Circular map for RG239248