

Product datasheet for **RG239241**

OSBP2 (NM_001282741) Human Tagged ORF Clone

Product data:

Product Type:	Expression Plasmids
Product Name:	OSBP2 (NM_001282741) Human Tagged ORF Clone
Tag:	TurboGFP
Symbol:	OSBP2
Synonyms:	HLM; ORP-4; ORP4; OSBPL1; OSBPL4
Mammalian Cell Selection:	Neomycin
Vector:	pCMV6-AC-GFP (PS100010)
E. coli Selection:	Ampicillin (100 ug/mL)



[View online »](#)

ORF Nucleotide
Sequence:

>RG239241 representing NM_001282741.
Blue=ORF Red=Cloning site Green=Tag(s)

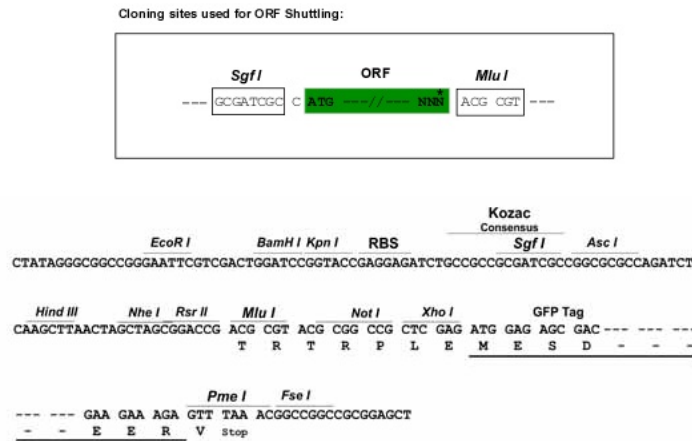
```
GCTCGTTTAGTGAACCGTCAGAATTTTGTAAACGACTCACTATAGGGCGGCCGGGAATTCGTGACTG
GATCCGGTACCGAGGAGATCTGCCGCCACGATCGCC
ATGAAGGACGCGGCTGCTGGGACACGGCCTCCGTGCGCTCCTTCTGCAGCTCCGGTGCCTGAATAAA
TTTAAGAAGGATGACTCTGGGGACGACGACGAGGCTACCACCCAGCCGACAAGAGCGAGCTGCACCAC
ACCCTGAAGAATCTTCCCTGAAGTTAGATGACCTCAGCACGTGCAATGACCTCATCGCCAAGCACGGC
GCTGCACTCCAGCGCTCCCTGACAGAGCTGGACGGCCTCAAGATCCCATCTGAGAGTGGGGAGAAGCTG
AAGGTGGTGAATGAGCGGGCCACCCTCTCCGCATCACATCCAATGCTATGATCAACGCCTGCAGGGAC
TTCTTGAACTAGCAGAGATACACAGTCGGAAATGGCAGCGGGCACTGCAGTATGAGCAGGAGCAGCGC
GTGCACTTGGAGGAAACCATTGAGCAGCTGGCGAAGCAGCACAACAGCCTCGAGCGGGCCTTCCACAGT
GCCCTGGCCGGCCGCAACCCCTCCAAGAGCTTCATTGAGGGAAGCCTCTTGACTCCCAAGGAGAG
GACAGTGAGGAAGATGAAGATACCGAGTACTTTGATGCCATGGAAGACTCCACATCCTTCATCACCGTG
ATCACCGAGGCCAAGGAAGACAGCAGAAAAGCTGAAGGTAGCACCGGGACAAGTCCGTGGACTGGAGC
TCAGCAGACAATGTACTAGATGGTGCCTCGCTCGTCCCAAGGGTTCATCCAAAGTCAAGAGGCGAGTC
CGCATTCCCAACAAGCCCAACTACAGCCTTAACCTCTGGAGCATCATGAAGAACTGCATCGGCCGGGAG
CTCTCCAGGATCCCATGCCGGTGAACCTCAATGAGCCCCTGTCCATGCTCCAGCGGCTGACAGAGGAC
CTGGAGTACCACCACCTGCTGGACAAGGCAGTGCAGTGCACCAGCTCAGTGGAGCAGATGTGCCTGGTG
GCCGCTTCTCTGTGTCTCCTACTCCACCACAGTGCACCGCATCGCCAAGCCCTCAACCCCATGCTG
GGGAGACCTTCGAGCTGGACCGCCTCGACGACATGGCCTGCGCTCCCTCTGTGAGCAGGTGAGCCAC
CACCCCCCTCAGCTGCGCACTACGTGTTCTCCAAGCATGGCTGGAGCCTCTGGCAGGAGATCACCATC
TCCAGCAAGTCCGGGGAAAATACATCTCCATCATGCCGCTAGGTGCCATCCACTTAGAATCCAGGCC
AGTGGGAATCACTACGTGTGGAGGAAGAGCACCTCAACTGTTCAACATCATCGTGGGCAAGCTCTGG
ATCGACCAGTCAGGGGACATCGAGATTGTGAACCATAAGACCAATGACCGGTGCCAGCTGAAGTTCTG
CCCTACAGCTACTTCTCCAAAGAGGCAGCCCGAAGGTGACAGGAGTGGTGAAGTGCAGCCAGGGCAAG
GCCATTACGTGCTGTCCGGCTCGTGGGATGAACAAATGGAGTGTCCAAGGTCATGCATAGCAGTCCC
AGCAGCCCAGCTCTGACGGGAAGCAGAAGACAGTGTACCAGACCCTGTGAGCCAAGCTGCTGTGGAAG
AAGTACCCGCTGCCGGAGAACCGGAGAACATGTACTACTTCTCAGAGCTGGCCCTGACCCTCAACGAG
CACGAGGAGGGCGTAGCGCAACCGACAGCCGCTGCGGCCGACCAGCGGCTGATGGAGAAGGGCCGT
TGGGACGAGGCCAATACCGAGAAGCAGCGGCTGGAGGAGAAGCAGCGCCTGTGCGGGCGCCGGCGGCTG
GAGGCCTGCGGGCCGGGACGAGCTGCAGCTCGGAGGAAGCAGAGAAGGAGGCGGATGCCTACACGCCA
CTGTGTTTGAAGAGGCTGGATCCGCTGACCGGGAGATGGCCTGTGTGTACAAGGGCGGCTACTGG
GAGGCCAAGGAGAAGCAAGACTGGCATATGTGCCCAACATCTTC
ACCGGTACGCGGCCGCTCGAG - GFP Tag - GTTTAAAC
```

Protein Sequence: >Peptide sequence encoded by RG239241
 Blue=ORF Red=Cloning site Green=Tag(s)

MKGRGCWDTASVRSFCSSGCLNKFKKDDSGDDDEATTPADKSELHHTLKNLSLKLDDLSTCNDLIAKHG
 AALQRSLTELDGLKIPSESGEKLKVVNERATLFRITSNAMINACRDFLELAEIHSRKWQRALQYEQEQR
 VHLEETIEQLAKQHNSLERAFHSAPGRPANPSKSFIEGSLLTPKGEDSEDEDETEYFDAMEDSTSFITV
 ITEAKEDSRKAEGSTGTSSVDWSSADNVLDGASLVKPKGSSKVKRRVRIPNKPNSLNLWSIMKNCIGRE
 LSRI PMPVNFNEPLSMLQRLTEDLEYHHLLDKAVHCTSSVEQMCLVAAFVSSYSTTVHRIAKFPNPML
 GETFELDRLDDMGLRSLCEQVSHPPSAAHYVFSKHGWSLWQEITISSKFRGKYISIMPLGAIHLEFQA
 SGNHYVWRKSTSTVHNIIVGKLWIDQSGDIEIVNHKTNDRCQLKFLPYSYFSKEAARKVTGVVSDSQGK
 AHYVLSGSWDEQMECSKVMHSSPSSSDGKQKTYVYQTL SAKLLWKYPLPENAEINMYFSELALTLNE
 HEEGVAPTDSRLRPDQRLMEKGRWDEANTEKQRL EEKQRLSRRRRL EACGPGSSCSSEEAKEADAYTP
 LWF EKRLDPLTGEMACVYKGGYWEAKEKQDWHMCPNIF
 TRTRPLEMESDESGLPAMEIECRITGTLNGVEFELVGGGEGTPEQGRMTNKMKSTKGALTFSPYLLSHV
 MGYGFYHFGTYP SGYENPFLHAINNGGYTNTRIEKYEDGGVLHVSFSYRYEAGRVIGDFKVMGTGFPEDE
 SVIFTDKIIRS NATVEHLHPMGDNDLDGSFTRTFLRDGGYSSVVD SHMHFKSAIHP SILQNGGPMFA
 FRRVEEDHSNTELGIVEYQHAFKTPDADAGEERV

Restriction Sites: SgfI-MluI

Cloning Scheme:



ACCN: NM_001282741

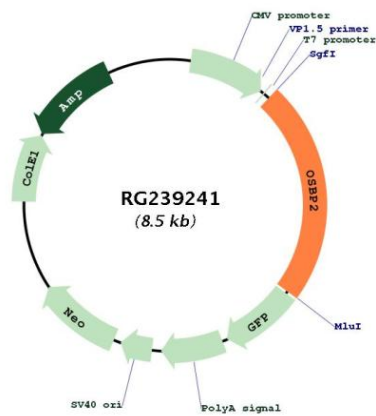
ORF Size: 1977 bp

OTI Disclaimer: The molecular sequence of this clone aligns with the gene accession number as a point of reference only. However, individual transcript sequences of the same gene can differ through naturally occurring variations (e.g. polymorphisms), each with its own valid existence. This clone is substantially in agreement with the reference, but a complete review of all prevailing variants is recommended prior to use. [More info](#)

OTI Annotation: This clone was engineered to express the complete ORF with an expression tag. Expression varies depending on the nature of the gene.

Components:	The ORF clone is ion-exchange column purified and shipped in a 2D barcoded Matrix tube containing 10ug of transfection-ready, dried plasmid DNA (reconstitute with 100 ul of water).
RefSeq:	<u>NM_001282741.1, NP_001269670.1</u>
RefSeq Size:	3589 bp
RefSeq ORF:	1980 bp
Locus ID:	23762
UniProt ID:	<u>Q969R2</u>
Cytogenetics:	22q12.2
MW:	75.1 kDa
Gene Summary:	The protein encoded by this gene contains a pleckstrin homology (PH) domain and an oxysterol-binding region. It binds oxysterols such as 7-ketocholesterol and may inhibit their cytotoxicity. Alternatively spliced transcript variants encoding multiple isoforms have been observed for this gene. [provided by RefSeq, Sep 2013]

Product images:



Circular map for RG239241