

Product datasheet for **RG239240**

CUL4A (NM_001278513) Human Tagged ORF Clone

Product data:

Product Type:	Expression Plasmids
Product Name:	CUL4A (NM_001278513) Human Tagged ORF Clone
Tag:	TurboGFP
Symbol:	CUL4A
Mammalian Cell Selection:	Neomycin
Vector:	pCMV6-AC-GFP (PS100010)
E. coli Selection:	Ampicillin (100 ug/mL)



[View online »](#)

ORF Nucleotide
Sequence:

>RG239240 representing NM_001278513.
Blue=ORF Red=Cloning site Green=Tag(s)

```
GCTCGTTTAGTGAACCGTCAGAATTTTGTAAACGACTCACTATAGGGCGGCCGGGAATTCGTGACTG
GATCCGGTACCGAGGAGATCTGCCGCCCGCATCGCC
ATGCTCTACAAGCAACTGCGTCAGGCCTGTGAAGACCAGTCCAGGCACAGATCCTTCCGTTTAGAGAA
GACTCACTAGATAGTGTGTTTTTAAAGAAGATTAACACGTGCTGGCAGGACCACTGCAGACAAATG
ATCATGATCAGAAGCATCTTCTGTCTTGGACCGCACCTATGTGCTGCAGAACTCCACGCTGCCCTCC
ATCTGGGATATGGGATTAGAAGTGTGTTAGAACCATATTATTAGTGATAAAATGGTTCAGAGTAAAACC
ATTGATGGAATCCTACTGCTGATCGAGCGGAGAGGAGCGGCGAGGCCGTGGACCGGAGCCTGTTGCGG
AGCCTCTGGGCATGCTGTCTGACCTGCAGGTGTATAAGATTCATTTGAACTGAAATTTTTGGAAGAG
ACTAATTGCTTATATGCTGCCGAAGGCCAAAGGTTAATGCAGGAAAGAGAGGTTCCAGAATATCTTAAC
CATGTAAGTAAACGCTTAGAGGAAGAGGGAGACAGAGTAATCACTTACTTGGACCACAGCACACAGAAA
CCACTGATTGCTTGTGTGGAGAAACAGCTATTAGGAGAACATTTAACAGCAATTCGCAGAAAGGGCTC
GACCCTTACTGGATGAGAACAGAGTCCCGGACCTCGCACAGATGTACCAGCTGTTCCAGCCGGGTGAGG
GGCGGGCAGCAGGCGCTGCTGCAGCACTGGAGCGAGTACATCAAGACTTTTGGAAACAGCGATCGTAATC
AATCCTGAGAAAGACAAAGACATGGTCCAAGACCTGTTGGACTTCAAGGACAAGTGGACCACGTGATC
GAGGTCTGCTTCCAGAAGATGAGCGGTTGCTCAACCTGATGAAGGAGTCTTTGAGACGTTTCATCAAC
AAGAGACCCAACAAGCCTGCAGAACTGATCGCAAAGCATGTGGATTCAAAGTTAAGAGCAGGCAACAAA
GAAGCCACAGACGAGGAGCTGGAGCGGACGTTGGACAAGATCATGATCCTGTTCCAGGTTTATCCACGGT
AAAGATGCTTTGAAGCATTTTATAAAAAAGATTTGGCAAAAAGACTCCTTGTGGGAAAAGTGCCTCA
GTCGATGCTGAAAAGTCTATGTTGTCAAAGCTCAAGCATGAGTGGGTGCAGCCTTACCAGCAAGCTG
GAAGGCATGTTCAAGGACATGGAGCTTTTGAAGGACATCATGGTTCATTTCAAGCAGCATATGCAGAA
CAGAGTGACTCAGGCCCTATAGACCTCACAGTGAACATACTCACAATGGGCTACTGGCCAACATACACG
CCCATGGAAGTGCACCTAACCACAGAAATGATTAACCTCAGGAAGTATTTAAGGCATTTTATCTTGGA
AAGCACAGTGGTCAAAAACCTCAGTGGCAAACCTTTGGGACATGCTGTTTTAAAAGCGGAGTTTAAA
GAAGGGAAGAAGGAATTCAGGTGTCCCTCTTCCAGACACTGGTCTCCTCATGTTCAACGAGGGAGAT
GGCTTCAGCTTTGAGGAGATAAAAATGGCCACGGGGATAGAGGATAGTGAATTGCGCAGAACGCTGCAG
TCCCTGGCCTGTGGCAAAGCACGTGTGCTGATTAAGTCCCAAAGGAAAGGAAGTGAAGATGGAGAC
AAGTTCATTTTTAATGGAGAGTTCAAGCACAAGTTGTTTGAATAAAGATCAATCAAATTCAGATGAAG
GAAACTGTTGAGGAACAGTTAGCACCCTGAGAGAGTGTTCAGGATAGACAATATCAGATTGATGCT
GCTATCGTCAGAATAATGAAGATGAGAAAGACTTTGGTCATAATCTTCTAGTTTCTGAATTATATAAT
CAGCTGAAATTTCCAGTAAAGCCTGGAGATTTGAAAAAGAGAATTGAATCTCTGATAGACAGAGACTAT
ATGGAGAGAGACAAAGACAATCCGAATCAGTACCCTACGTGGCC
ACGCGTACGCGGCCGCTCGAG - GFP Tag - GTTTAAAC
```

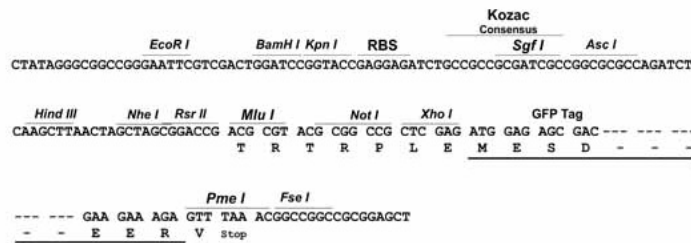
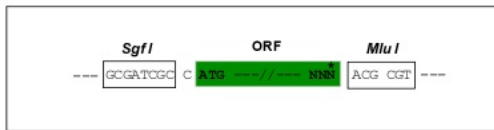
Protein Sequence: >Peptide sequence encoded by RG239240
 Blue=ORF Red=Cloning site Green=Tag(s)

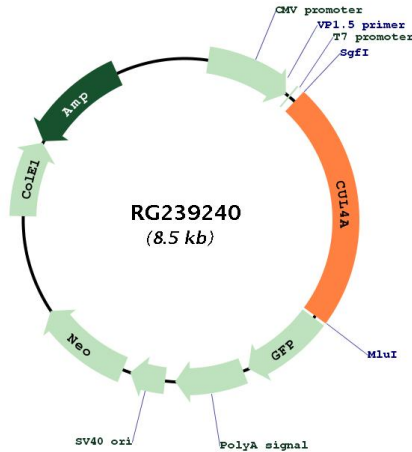
MLYKQLRQACEDHVQAQILPFREDSLDSVLFLLKINTCWQDHCRCQMIMIRSIFFLDRTYVYLQNSTLPS
 IWDMGLELFRTHIISDKMVQSKTIDGILLIERERSGEAVDRSLLRLLGMLSDLQVYKDSFELKFL
 ENCLYAAEQRLMQEREVPEYLNHVSKRLEEEGDRVITYLDHSTQKPLIACVEKQLLGEHLTAILQKGL
 DHLLDENRVPDLAQMYQLFSRVRGQQLLQHWSEYIKTFGTAVINPEKDKDMVQDLDLDFKDKVDHVI
 EVCFQKNERFVNLMKESFETFINKRPNKPAELIAKHVDSKLRAGNKEATDEELERTLDKIMILFRFIHG
 KDVFEAFYKDKLAKRLLVGKSASVDAEKSMKSLKHECGAAFTSKLEGMFKDMELSKDIMVHFKQHMQN
 QSDSGPIDLTVNILTMGYWPTYTPMEVHLPMEIKLQEVFKAFYLGKHSRKLQWQTTLGHAVLKAEFK
 EGKKEFQVSLFQTLVLLMFNEGDGFSFEEIKMATGIEDSELRRTLQSLACGKARVLIKSPGKVEDGD
 KFI FNGEFKHKLFRIKINQIQMKETVEEQVSTTERVFQDRQYQIDAAIVRIMKMRKTLGHNLVSELN
 QLKFPVKPGDLKKRIESLIDRDYMERDKDNPQYHYVA
 TRTRPLEMESDEGLPAMEIECRITGTLNGVEFELVGGGEGTPEQGRMTNKMSTKGALTFSPYLLSHV
 MGYGFYHFGTYPSTYENPFLHAINNGGYTNTRIEKYEDGGVLHVSFSYRYEAGRVIGDFKVMGTGFPED
 SVIFTDKIIRSNATVEHLHPMGDNDLDGSFTRTFLRDGGYSSVVDSHMHFKSAIHPSILQNGGPMFA
 FRRVEEDHSNTELGIVEYQHAFKTPDADAGEERV

Restriction Sites: SgfI-MluI

Cloning Scheme:

Cloning sites used for ORF Shuttling:



Plasmid Map:


ACCN:	NM_001278513
ORF Size:	1977 bp
OTI Disclaimer:	The molecular sequence of this clone aligns with the gene accession number as a point of reference only. However, individual transcript sequences of the same gene can differ through naturally occurring variations (e.g. polymorphisms), each with its own valid existence. This clone is substantially in agreement with the reference, but a complete review of all prevailing variants is recommended prior to use. More info
OTI Annotation:	This clone was engineered to express the complete ORF with an expression tag. Expression varies depending on the nature of the gene.
Components:	The ORF clone is ion-exchange column purified and shipped in a 2D barcoded Matrix tube containing 10ug of transfection-ready, dried plasmid DNA (reconstitute with 100 ul of water).
RefSeq:	NM_001278513.2
RefSeq Size:	4053 bp
RefSeq ORF:	1980 bp
Locus ID:	8451
UniProt ID:	Q13619
Cytogenetics:	13q34

Protein Pathways: Nucleotide excision repair, Ubiquitin mediated proteolysis

MW: 77.3 kDa

Gene Summary: CUL4A is the ubiquitin ligase component of a multimeric complex involved in the degradation of DNA damage-response proteins (Liu et al., 2009 [PubMed 19481525]).[supplied by OMIM, Oct 2009]