

## Product datasheet for **RG239238**

### Elastin (ELN) (NM\_001278916) Human Tagged ORF Clone

#### Product data:

Product Type:	Expression Plasmids
Product Name:	Elastin (ELN) (NM_001278916) Human Tagged ORF Clone
Tag:	TurboGFP
Symbol:	Elastin
Synonyms:	ADCL1; SVAS; WBS; WS
Mammalian Cell Selection:	Neomycin
Vector:	pCMV6-AC-GFP (PS100010)
E. coli Selection:	Ampicillin (100 ug/mL)



[View online »](#)

**ORF Nucleotide Sequence:**

>RG239238 representing NM\_001278916.  
 Blue=ORF Red=Cloning site Green=Tag(s)

```
GCTCGTTAGTGAACCGTCAGAATTTTGTAAACGACTCACTATAGGGCGGCCGGGAATTCGTGACTG
GATCCGGTACCGAGGAGATCTGCCGCCACGATCGCC
ATGGCGGGTCTGACGGCGGGCCCGCGGCCGGAGTCCTCTGCTCCTGCTGCCATCCTCCACCCC
TCTCGGCCTGGAGGGTCCCTGGGCCATTCTGGTGGAGTTCTGGAGGAGTCTTTATCCAGGGGCT
GGTCTCGAGCCCTTGGAGGAGGAGCGCTGGGGCTGGAGGCAAACCTCTTAAGCCAGTTCCTGGAGGG
CTTGCGGGTGCTGGCCTTGGGGCAGGGCTCGGCGCCTTCCCCGAGTTACCTTTCCGGGGGCTCTGGTG
CCTGGTGGAGTGGCTGACGCTGCTGCAGCCTATAAAGCTGCTAAGGCTGGCGCTGGGCTTGGTGGTGC
CCAGGAGTTGGTGGCTTAGGAGTGTCTGCAGGTGCGGTGGTTCTCAGCCTGGAGCCGGAGTGAAGCCT
GGGAAAGTCCCGGGTGTGGGGCTGCCAGGTGTATACCCAGGTGGCGTGTCCCAGGAGCTCGTTCCCC
GGTGTGGGGTGTCCCTGGAGTCCCAGTGGAGCAGGAGTTAAGCCCAAGGCTCCAGGTGTAGGTGGA
GCTTTTGTGGAATCCAGGAGTTGACCCCTTTGGGGACCGAACCTGGAGTCCCAGTGGGGTATCCC
ATCAAGGCCCCCAAGCTGCCTGGCTATGGGCCCGAGGAGTGGCTGGTGCAGCGGCAAGGCTGGTTAC
CCAACAGGGACAGGGGTTGGCCCCAGGCAGCAGCAGCGGCAGCTAAAGCAGCAGCAAAGTTCCGGT
GCTGGAGCAGCCGGAGTCTCCCTGGTGTGGAGGGGCTGGTGTCTGGCGTGCCTGGGCAATTCCT
GGAATGGAGGCATCGCAGGCGTTGGGACTCCAGCTGCAGCTGCAGCTGCAGCAGCAGCCGCTAAGGCA
GCCAAGTATGGAGCTGCTGCAGGCTTAGTGCCTGGTGGGCCAGGCTTTGGCCCGGAGTAGTTGGTGTG
CCAGGAGCTGGCGTCCAGGTGTGGTGTCCCAGGAGTGGGATTCCAGTTGTCCAGGTGCTGGGATC
CCAGGTGCTGGGTTCCAGGGTGTGTACCAGAAGCAGCTGCTAAGGCAGCTGCAAAGGCAGCCAAA
TACGGGGCCAGGCCCGGAGTCGGAGTTGGAGGCATTCTACTTACGGGGTTGGAGCTGGGGCTTTCCC
GGCTTTGGTGTGCGGAGTCGGAGTATCCCTGGAGTCGAGTGTCCCTGGTGTGCGAGGTGTTCCCGGA
GTCGGAGGTGTCCCGGGAGTTGGCATTTCGCCGAAGCTCAGGCAGCAGCTGCCGCAAGGCTGCCAAG
TACGGTTAGTTCCTGGTGTGCGCGTGGCTCCTGGAGTTGGCGTGGCTCCTGGTGTGCGGTGGCTCCT
GGAGTTGGCTTGCTCCTGGAGTTGGCGTGGCTCCTGGAGTTGGTGTGGCTCCTGGCGTTGGCGTGGCT
CCCGGCATTGGCCCTGGTGGAGTGCAGGAGCTGCAGCTGGGCTTGGTGTGGCATCCCTGGACTTGGGA
GTTGGTGTGCGCGTCCCTGGACTTGGAGTTGGTGTGGTGTCTGGACTTGGAGTTGGTGTGGTGTG
CCTGGCTTCGGGGCAGTACCTGGAGCCCTGGCTGCCGCTAAAGCAGCCAAATATGGAGCAGCAGTGCCT
GGGTCTTGGAGGGCTCGGGCTCTCGGTGGAGTAGGCATCCAGCGGTGTGGTGGGAGCCGGACCC
GCCGCCCGCTGCCGCAAGCTGCTGCCAAGCCGCCAGTTTGGCTAGTGGGAGCCGCTGGG
CTCGGAGGACTCGGAGTCGGAGGCTTGGAGTTCCAGGTGTGGGGCCTTGGAGGTATACCTCCAGCT
GCAGCCGCTAAAGCAGCTAAATACGGAGTGGCAGCAAGACCTGGCTTCGGATTGTCTCCATTTCCCA
GGTGGGGCTGCCTGGGAAAGCTTGTGGCCGGAAGAGAAAA
ACGCGTACGCGGCCGCTCGAG - GFP Tag - GTTTAAAC
```

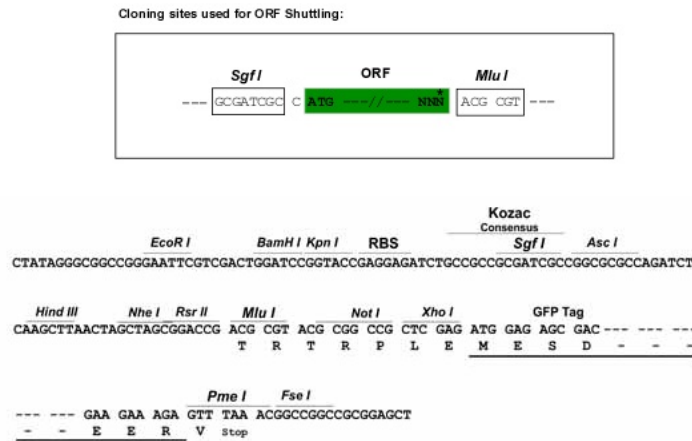
**Protein Sequence:** >Peptide sequence encoded by RG239238  
 Blue=ORF Red=Cloning site Green=Tag(s)

```

MAGL TAAAPRPGVLLLLLSILHPSRPGGVPGAIPGGVPGGVFYPGAGLGALGGGALPGGGKPLKPVPGG
LAGAGLGAGLGAFAVTFPGALVPGGVADAAAA YKAAKAGAGLGGVPGVGG LGVSAGAVPQPGAGVKP
GKVPGVGLPGVYPPGGVLPGARFPVGVLPVPTGAGVKPKAPGVGGAFAGIPGVGPFGGPQPGVPLGYP
IKAPKLPGYGPGGVAGAAGKAGYPTGTGVGPQAAAAA AKA AAKF GAGAAGVLPVGGAGVPGVPGAI
GIGGIAGVGT PAAAAA AAKA AAKY GAAAGLVPGGPGFPGVVGVPAGVPGVPGAGIPVVPAGI
PGAAPVGVVSPEAAAAA AAKA AAKY GARPGVGVGGIPTYGVGAGGFPGFVGVGGIPGVAGVPGVGGVPG
VGGVPGVGISPEA QAAAAA AAKA YGLVPGVGVAPGVGVAPGVGVAPGVGLAPGVGVAPGVGVAPGVGVA
PGIGPGGVAGAAAGL GAGIPGLGVGVGPGLGVGAGVPGLVGAGVPGF GAVPGALAAKA AAKY GAAVP
GVLGGLGALGGVGPVGGVAGAPAAAAA AAKA AAKA QFGLVGAAGL GGLGVGGLGVPGVGG LGIPPA
AAAAA AAKY GVAARPGFGLSPI FPGGACLGKACGRKRK
TRTRPLEMESDESGLPAMEIECRITGTLNGVEFELVGGEGTPEQGRMTNKMKSTKGALTFSPYLLSHV
MGYGFYHFGTYP SGYENPFLHAINNGGYNTRIEKYEDGGVLHVSFSYRYEAGRVIGDFKVMGTGFPE
SVIFTDKIIRS NATVEHLHPMGDNDLDGSFTRTFLRDGGYYSSVVD SHMHFKSAIHP SILQNGGPMFA
FRRVEEDHSNTELGIVEYQHAFKTPDADAGEERV
  
```

**Restriction Sites:** SgfI-MluI

**Cloning Scheme:**



**ACCN:** NM\_001278916

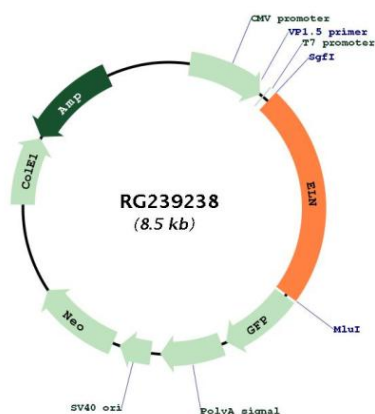
**ORF Size:** 1974 bp

**OTI Disclaimer:** The molecular sequence of this clone aligns with the gene accession number as a point of reference only. However, individual transcript sequences of the same gene can differ through naturally occurring variations (e.g. polymorphisms), each with its own valid existence. This clone is substantially in agreement with the reference, but a complete review of all prevailing variants is recommended prior to use. [More info](#)

**OTI Annotation:** This clone was engineered to express the complete ORF with an expression tag. Expression varies depending on the nature of the gene.

<b>Components:</b>	The ORF clone is ion-exchange column purified and shipped in a 2D barcoded Matrix tube containing 10ug of transfection-ready, dried plasmid DNA (reconstitute with 100 ul of water).
<b>RefSeq:</b>	<a href="#">NM_001278916.2</a>
<b>RefSeq Size:</b>	3591 bp
<b>RefSeq ORF:</b>	1977 bp
<b>Locus ID:</b>	2006
<b>UniProt ID:</b>	<a href="#">P15502</a>
<b>Cytogenetics:</b>	7q11.23
<b>Protein Families:</b>	Druggable Genome, Secreted Protein, Transmembrane
<b>MW:</b>	57 kDa
<b>Gene Summary:</b>	This gene encodes a protein that is one of the two components of elastic fibers. Elastic fibers comprise part of the extracellular matrix and confer elasticity to organs and tissues including the heart, skin, lungs, ligaments, and blood vessels. The encoded protein is rich in hydrophobic amino acids such as glycine and proline, which form mobile hydrophobic regions bounded by crosslinks between lysine residues. Degradation products of the encoded protein, known as elastin-derived peptides or elastokines, bind the elastin receptor complex and other receptors and stimulate migration and proliferation of monocytes and skin fibroblasts. Elastokines can also contribute to cancer progression. Deletions and mutations in this gene are associated with supravalvular aortic stenosis (SVAS) and autosomal dominant cutis laxa. [provided by RefSeq, Aug 2017]

### Product images:



Circular map for RG239238