

Product datasheet for **RG239236**

ZNF135 (NM_001289401) Human Tagged ORF Clone

Product data:

| | |
|---------------------------|--|
| Product Type: | Expression Plasmids |
| Product Name: | ZNF135 (NM_001289401) Human Tagged ORF Clone |
| Tag: | TurboGFP |
| Symbol: | ZNF135 |
| Synonyms: | pHZ-17; pT3; ZNF61; ZNF78L1 |
| Mammalian Cell Selection: | Neomycin |
| Vector: | pCMV6-AC-GFP (PS100010) |
| E. coli Selection: | Ampicillin (100 ug/mL) |



[View online »](#)

ORF Nucleotide Sequence:

>RG239236 representing NM_001289401.
 Blue=ORF Red=Cloning site Green=Tag(s)

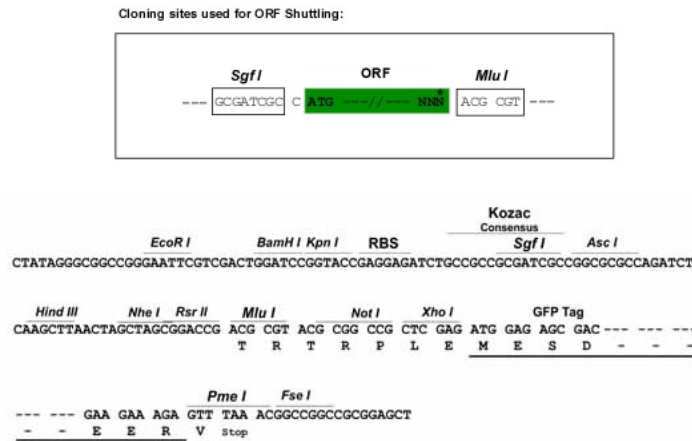
```
GCTCGTTTAGTGAACCGTCAGAATTTTGTAAACGACTCACTATAGGGCGGCCGGGAATTCGTGACTG
GATCCGGTACCGAGGAGATCTGCCGCCCGGATCGCC
ATGACCCTGGGTGCGCTCTCCACAGACCCGGAGCAAGTGACGTTTGGAGACGTGGTAGTGGCTTC
AGCCAGGAGGAGTGGGGCAGCTGAAGCCTGCCAGAGGACCCTGTACCGTGATGTAATGCTGGACACC
TTCAGGCTTCTGGTCTCTGTGGACATTGGTTACCGAAGCCGAATGTCATCTCCCTGCTGGAGCAAGAG
GCAGAGCTGTGGGCGGTGGAGTCTAGACTTCCCAAGGCGGTACCCAGACTTGGAACTAGACCCAAA
GTCAAAGTGTGAGTCTAAAGCAAGGCATCTCTGAAGAAATATCCAACAGTGTATCTTGGTAGAAAAGA
TTCCTGTGGGATGGTCTGTGGTACTGCAGGGGTGAGGACACTGAGGGCCACTGGGAATGGAGTTGTGAG
AGTCTAGAGAGCCTGGCAGTGCCGGTGGCCTTACGCCTGTGAAGACGCCTGTTCTGGAGCAGTGGCAG
AGGAATGGGTTTGGGAAAACATAAGTCTGAACCTGATCTCCACATCAACCAATGACTCCTGAAAGA
CAAAGCCCCACACATGGGGAACAGTGGAAAAAGGGAGAAGCCAGACCTAAATGTTTTACAGAAAACC
TGTGTAAGAGAAAACCTACAAATGTGAGGAATGCGGAAAGGCCTTTAGTACAGCTCAGCACTTATC
GAACACCACCGGACGCACACAGGAGAGAGACTTACGAATGTACGAATGCTTAAAGGCTTCCGGAAC
AGCTCGGCACTTACCAAACACCAGAGAATCCATACTGGGGAGAAAACCTATAAATGCACTCAGTGTGGG
AGGACCTTCAACCAAATTGCCCACTGATCCAGCACCAGAGAAGTACACAGGTGAGAAGCCCTATGAA
TGCAGCGAATGTGGGAAATCCTTCAAGTTTGTAGTCTCCTTCCAGCCAGCAGGAGCAACTCACACAGGC
GAGAAGCCCTACGAGTGCAGTGAAGTGTGGGAAAGCCTTCCGGCAAAGCATCCACCTCACCCAGCATCTG
CGAATCCACACTGGGGAGAAACCTATCAGTGTGGTGAAGTGTGGCAAGGCCTTCCAGCCAGCTCATCC
TTGACCAAACACCAGCGAATCCACACAGGGGAGAAGCCCTACGAGTGCCATGAGTGTGGAAAAGCCTT
ACCCAGATCACACCACTGATTGAGCACCAGAGGACCCACACAGGAGAAAAGCCCTATGAGTGTGGTGA
TGTGGGAAAGCCTTCAAGTCAAGACACTCCTGACCGAGCATCGGAGGATTACACAGGAGAGAAGCCC
TATGGATGCAACGAGTGTGGGAAAACCTTCAAGCCACAGCTCCTCACTCAGCCAGCATGAGCGGACACAC
ACAGGAGAGAAGCCCTATGAGTGCAGTCAAGTGTGGGAAAGCCTTCCGGCAGAGCACACACCTCACCCAA
CACCGAGCAATCCACACAGGGGAGAAGCCCTATGAATGCAATGACTGCGGCAAGGCATTGAGTCAAGC
TCGTCCCTCACCAAACATCAGCGAATCCACACTGGGGAGAAGCCCTACGAATGCAACCAAGTGTGGCAGA
GCCTTCAAGCCAGCTTGCCTCCCTCATTGAGTCAAGGATCCACACAGGAGAGAAAACCTATGAATGT
AACCAGTGTGGCAGAGCCTTCAAGCCAGAGTCCCTTCTCATCGAACACCAGAGGATTACACCAAGGAA
AAGCCGTATGGGTGCAATGAGTGTGGGAAATCCTTCAAGCCACAGCTCCTCGCTCAGCCAGCACGAAAGG
ACGCACACTGGGAAAAGCCCTATGAGTGTACGATTGCGGAAAGTCTTTAGGCAGAGCACCCACCTC
ACTCAGCACCGGAGGATCCACACAGGAGAGAAGCCATATGCATGCAGGGACTGTGGAAAAGCCTTTACC
CACAGCTCCTCCCTTACCAAGCACCAGAGAAGTCACTGGA
ACGCGTACGCGGCCGCTCGAG – GFP Tag – GTTTAAAC
```

Protein Sequence: >Peptide sequence encoded by RG239236
 Blue=ORF Red=Cloning site Green=Tag(s)

MTPGVRVSTDPEQVTFEDVVVGFSSQEEWGQLKPAQRTL YRDVMLDTFRLLVSVGHWLPKPNVISLLEQE
 AELWAVESRLPQGVYPDLETRPKVKLSVLKQGISEEISNSVILVERFLWDGLWYCRGEDTEGHWEWSCE
 SLESLAVPVAFTPVKTPVLEQWQRNGFGENISLNPDLPHQPMTPERQSPHTWGTRGKREKPDNLVQLKT
 CVKEKPYKCQECGKAFSHSSALIEHHRHTGERPYECHECLKGFRNSSALTKHQRIHTGEKPYKCTQCG
 RTFNQIAPLIQHQRHTHTEKPYECSECGKSF SFRSSFSQHERTHTGEKPYECSECGKAFRQSIHLTQHL
 RIHTGEKPYQCGECGKAFSHSSSLTKHQRIHTGEKPYECHECGKAFTQITPLIQHQRHTHTEKPYECGE
 CGKAFSQSTLLTEHRIHTGEKPYGCNECGKTFSHSSSLSQHERHTHTEKPYEC SQCGKAFRQSTHLTQ
 HQRIHTGEKPYECNDCGKAFSHSSSLTKHQRIHTGEKPYECNQCGRAFSQLAPLIQHQRHTHTEKPYEC
 NQCGRAFSQSLLIEHQRIHTKEKPYGCNECGKSF SHSSSLSQHERHTHTEKPYECHDCGKSF RQSTHL
 TQHRIHTGEKPYACRDCGKAFTHSSSLTKHQRTHTG
 TRTRPLEMESDESGLPAMEIECRITGTLNGVEFELVGGEGTPEQGRMTNKMSTK GALTFSPYLLSHV
 MGYGFYHFGTYP SGYENPFLHAINNGGYTNTRIEKYEDGGVLHVSFSYRYEAGRVIGDFKVMGTGF PED
 SVIFTDKIIRS NATVEHLHPMGDNDLDGSFTRTFLRDGGYYSSVVD SHMHFKSAIHPSILQNGGPMFA
 FRRVEEDHSNTELGIVEYQHAFKTPDADAGEERV

Restriction Sites: SgfI-MluI

Cloning Scheme:



ACCN: NM_001289401

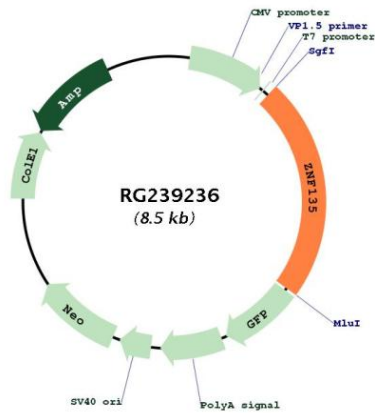
ORF Size: 1974 bp

OTI Disclaimer: The molecular sequence of this clone aligns with the gene accession number as a point of reference only. However, individual transcript sequences of the same gene can differ through naturally occurring variations (e.g. polymorphisms), each with its own valid existence. This clone is substantially in agreement with the reference, but a complete review of all prevailing variants is recommended prior to use. [More info](#)

OTI Annotation: This clone was engineered to express the complete ORF with an expression tag. Expression varies depending on the nature of the gene.

| | |
|--------------------------|--|
| Components: | The ORF clone is ion-exchange column purified and shipped in a 2D barcoded Matrix tube containing 10ug of transfection-ready, dried plasmid DNA (reconstitute with 100 ul of water). |
| RefSeq: | NM_001289401.2 |
| RefSeq Size: | 3377 bp |
| RefSeq ORF: | 1977 bp |
| Locus ID: | 7694 |
| UniProt ID: | P52742 |
| Cytogenetics: | 19q13.43 |
| Protein Families: | Transcription Factors |
| MW: | 75.7 kDa |
| Gene Summary: | Plays a role in the regulation of cell morphology and cytoskeletal organization. May be involved in transcriptional regulation.[UniProtKB/Swiss-Prot Function] |

Product images:



Circular map for RG239236