

## Product datasheet for **RG239235**

### PCDHB6 (NM\_001303145) Human Tagged ORF Clone

#### Product data:

Product Type:	Expression Plasmids
Product Name:	PCDHB6 (NM_001303145) Human Tagged ORF Clone
Tag:	TurboGFP
Symbol:	PCDHB6
Synonyms:	PCDH-BETA6
Mammalian Cell Selection:	Neomycin
Vector:	pCMV6-AC-GFP (PS100010)
E. coli Selection:	Ampicillin (100 ug/mL)



[View online »](#)

ORF Nucleotide  
Sequence:

>RG239235 representing NM\_001303145.  
Blue=ORF Red=Cloning site Green=Tag(s)

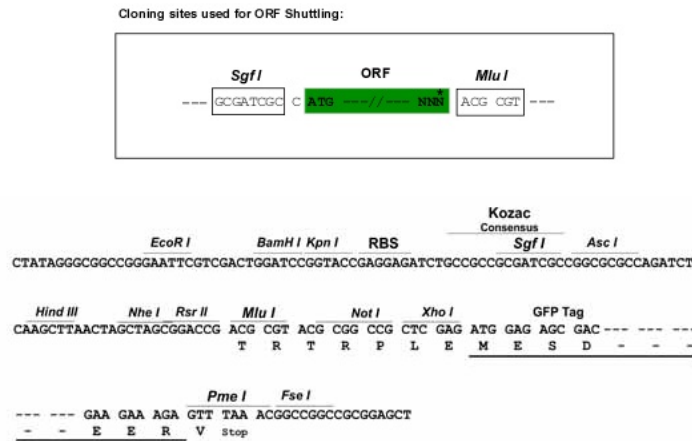
```
GCTCGTTTAGTGAACCGTCAGAATTTTGTAAACGACTCACTATAGGGCGGCCGGGAATTCGTGACTG
GATCCGGTACCGAGGAGATCTGCCGCCACGATCGCC
ATGCTCCTGAAAATATCAGAAATTAATGCCAGGAAAGATATTTCTTTGAAAATGGCACACGATTTA
GACACCGGCAGCAACGGCCTTCAGAGGTACACAATCAGCTCCAACCCTCACTTCCACGTTCTCACCCGC
AATCGCAGCGAAGGCAGGAAGTTCCCGGAGCTGGTGTAGACAAAACCGTTGGACCGCAGGAGCAGCCC
CAACTCAGGCTAACGCTGATCGCGCTGGATGGCGGGTCTCCGCCCGGTGAGGGACCTCCGAGATTCAG
ATCCAGGTTTTGGACATCAATGACAACGTCGCCGAGTTTGTCTCAGGAGCTCTATGAAGCACAAGTCCT
GAGAACAACCCCTCGGCTCTCTGGTTATTACCGTCTCAGCCAGAGATTTAGATGCAGGATCGTTTGGG
AAGGTATCTTACGCCCTGTTTCAAGTCGATGACGTCAACCAACCCTTCGAAATAAACGCAATCACAGGA
GAAATTCGGCTGAGAAAGCTTTGGATTTGAGGAAATTCAGTCTTATGACGTGGATGTTGAGGCTACA
GATGGTGGAGGCCTATCAGGAAATGCTCTTATGTCGTCAGGGTCTGGACGTGAATGACAATGCCCT
GAACTCACCATGTCGTTCTTATCAGCCTCATCCAGAAAACCTACCAGAGATCACAGTGGCAGTTTTC
AGTGTTCAGATGCAGACTCTGGACATAACCAACAGGTTATTTGTTCAATAGAGAACAATCTCCCTTT
CTACTAAGACCTTCCGTGGAGAATTTCTACACCCTGGTAACAGAAGGCGCGCTGGACAGAGAGAGAGA
GCCGAGTACAACATCACTATCACGGTCACTGATTTGGGGACCAAGGCTGAAAACCCAGCAGAGCATA
ACTGTGACAGTCTCCGACGTCAATGACAACGCCCCCGCTTACCCAAACCTCCTACACCCTGTTTCGTC
CGCGAGAACACAGCCCCGCCCTGCACATCGGCAGCGTCAGCGCCACAGACAGAGACTCAGGCATCAAC
GCCAGGTCACTACTCGCTGCTGCCGCCAGGACCCGACCTGCCCTCTCTCCCTGGTCTCCATC
AACCGGACAACGGCCACCTGTTTGCCTCAGGTCGCTGGACTACGAGGCCCTGCAGTCTTTCGAGTTC
CGCGTGGCGCCACAGACCGCGCTCCCGCGTTGAGCAGCGAGGCGCTGGTGGCCTTGTGGTGCTG
GACGCCAACGACAACCTCGCCTTTCGTGTTGTACCGCTGCAGAACGGCTCCGCGCCTGCACCGAGCTG
GTGCCCGGGCGGCCGAGCCGGCTACCTGGTGACCAAGGTGGTGGCGGTGGACGGCGACTCGGGCCAG
AACGCCTGGTGTGCTACAGCTGCTCAAGGCCACGGAGCTCGGTCTGTTTCGGCGTGTGGGCGACAAT
GGCGAGGTGCGCACCGCCAGGCTGCTGAGCGAGCGAGACGCAGCCAAGCACAGGCTGGTGGTGTGTC
AAGGACAATGGCGAGCCTCCGCGCTCGGCCACCGCCACGCTGCACGTGCTCCTGGTGGACGGCTTCTCC
CAGCCCTACCTGCCTCTCCCTGAGGCGGCCCGGCCAAGCCAGGCCGACTCTCTACCGTCTACCTG
GTGGTGGCGTTGGCTCGGTGTCGTCGCTCTTCTCTTTTGGTGTCTGTTTCGTGGCGGTGCGGCTG
TGCAGGAGGAGCAGGGCGCCTCGTGGTTCGCTACTCGGTGCCGAGGGTCCCTTTCAGGGCATCTG
GTGGATGTGAGCGCACCGGGACCTATCCAGAGCTACCAAGTACAAGGTGTCTGACGGGAGGCTCA
GAAACAAATGAGTTCAAGTTCCTGAAGCCGATTATGCCCAACTTCCCTCCTCAGGGCACTGAGAGAGAA
ATGGAAGAAACCCACCTCTCGGAATAGCTTCCCGTTTCACT
ACGCGTACGCGGCCGCTCGAG - GFP Tag - GTTTAAAC
```

**Protein Sequence:** >Peptide sequence encoded by RG239235  
 Blue=ORF Red=Cloning site Green=Tag(s)

MLLKISEITMPGKIFPLKMAHDLDTGSNGLQRYTISSNPHFHVLTNRNSEGRKFPELVLDKPLDREEQP  
 QLRLTLIALDGGSPPRSGETSEIQVLVDINDNVEFAQELYEAQVPENNPLGSLVITVSARDLDAGSFG  
 KVSYALFQVDDVNQPFENAITGEIRLRKALDFEEIQSYDVDVEATDGGGLSGKCSLVVRVLDVNDNAP  
 ELTMSFFISLIPENLPEITVAVFSVSDADSGHNQVICSINNLPFLLRPSVENFYTLVTEGALDRESR  
 AEYNITITVTDLGTPLRKTQQSITVQVSDVNDNAPFTQTSYTLFVRENNPALHIGSVSATDRDSGIN  
 AQVTYSLLPPQDPLPLSSLVSNADNGHLFALRSLDYEALQSFEFRVGATDRGSPALSSEALVRLLVL  
 DANDNSPFVLYPLQNGSAPCTELVPRAAEPGYLVTKVAVVDGDSGQNAWLSYQLLKATELGLFGVAHN  
 GEVRTARLLSERDAAKHRLVVLKDNGEPPRSATATLHVLLVDGFSQPYLPLPEAAPAQADSLTVYL  
 VVALASVSSLFLFSVLLFVAVRLCRRSRAASVGRYSVPEGPFPGHLVDVSGTGTLQSQYQYKVLGTGGS  
 ETNEFKFLKPIPNFPQGTREMEETPTSRNSFPFS  
 TRTRPLEMESDEGLPAMEIECRITGTLNGVEFELVGGGEGTPEQGRMTNKMKSTKGALTFSPYLLSHV  
 MGYGFYHFGTYPSTYENPFLHAINNGGYNTRIEKYEDGGVLHVSFSYRYEAGRVIGDFKVMGTGFPED  
 SVIFTDKIIRSNAIVEHLHPMGDNDLDGSFTRTFLRDGGYYSSVVDSHMHFKSAIHPISILQNGGPMFA  
 FRRVEEDHSNTELGIVEYQHAFKTPDADAGEERV

**Restriction Sites:** SgfI-MluI

**Cloning Scheme:**



**ACCN:** NM\_001303145

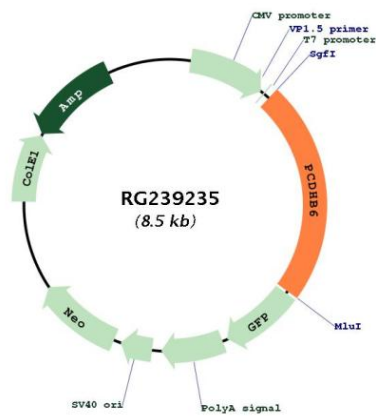
**ORF Size:** 1974 bp

**OTI Disclaimer:** The molecular sequence of this clone aligns with the gene accession number as a point of reference only. However, individual transcript sequences of the same gene can differ through naturally occurring variations (e.g. polymorphisms), each with its own valid existence. This clone is substantially in agreement with the reference, but a complete review of all prevailing variants is recommended prior to use. [More info](#)

**OTI Annotation:** This clone was engineered to express the complete ORF with an expression tag. Expression varies depending on the nature of the gene.

<b>Components:</b>	The ORF clone is ion-exchange column purified and shipped in a 2D barcoded Matrix tube containing 10ug of transfection-ready, dried plasmid DNA (reconstitute with 100 ul of water).
<b>RefSeq:</b>	<a href="#">NM_001303145.2</a>
<b>RefSeq Size:</b>	3061 bp
<b>RefSeq ORF:</b>	1977 bp
<b>Locus ID:</b>	56130
<b>UniProt ID:</b>	<a href="#">Q9Y5E3</a>
<b>Cytogenetics:</b>	5q31.3
<b>Protein Families:</b>	Transmembrane
<b>MW:</b>	72.2 kDa
<b>Gene Summary:</b>	This gene is a member of the protocadherin beta gene cluster, one of three related gene clusters tandemly linked on chromosome five. The gene clusters demonstrate an unusual genomic organization similar to that of B-cell and T-cell receptor gene clusters. Unlike the alpha and gamma clusters, the transcripts from these genes do not share common 3' exons. These neural cadherin-like cell adhesion proteins are integral plasma membrane proteins that most likely play a critical role in the establishment and function of specific cell-cell neural connections. Alternative splicing results in multiple transcript variants. [provided by RefSeq, Dec 2014]

### Product images:



Circular map for RG239235