

Product datasheet for **RG239232**

DDX3Y (NM_001302552) Human Tagged ORF Clone

Product data:

Product Type:	Expression Plasmids
Product Name:	DDX3Y (NM_001302552) Human Tagged ORF Clone
Tag:	TurboGFP
Symbol:	DDX3Y
Synonyms:	DBY
Mammalian Cell Selection:	Neomycin
Vector:	pCMV6-AC-GFP (PS100010)
E. coli Selection:	Ampicillin (100 ug/mL)



[View online »](#)

ORF Nucleotide
Sequence:

>RG239232 representing NM_001302552.
Blue=ORF Red=Cloning site Green=Tag(s)

```
GCTCGTTAGTGAACCGTCAGAATTTTGTAAACGACTCACTATAGGGCGGCCGGGAATTCGTGACTG
GATCCGGTACCGAGGAGATCTGCCGCCACGATCGCC
ATGGAAATTGGACGCCCGGAAAGACACCTGGAAGCTTGCTAATCTGGACCTGAACTCTGAAAAACAG
AGTGGAGGAGCAAGTACAGCGAGCAAAAGGCGCTATATACCTCCTCACTTAAGGAACAGAGAAGCATCT
AAAGGATTCCATGATAAAGACAGTTCAGGTTGGAGTTGCAGCAAAGATAAGGATGCATATAGCAGTTTT
GGTCTCGAGATTCTAGAGGAAAGCCTGGTTATTTTCAGTGAACGTGGAAGTGGATCAAGGGGAAGATTT
GATGATCGTGGACGGAGTGACTATGATGGTATTGGCAATCGTGAAAGACCTGGCTTTGGCAGATTTGAA
CGGAGTGGACATAGTCGTTGGTGTGACAAGTCAGTTGAAGATGATTGGTCAAACCACCTCCACCAAGT
GAACGCTTGGAGCAAGAAGTGTCTGGAGGAAACACGGGGATTAACCTTGAGAAATATGATGATATA
CCAGTAGAGGCAACCGGCAGTAAGTGCCTCCACATATTGAGAATTTAGCGATATTGACATGGGAGAA
ATTATCATGGGGAACATTGAACTTACTCGCTATACTCGCTACTCCAGTGCAAAAACATGCCATTCCT
ATTATTAAGGAAAAAGAGACTTAATGGCTTGTGCCAAACAGGATCTGGGAAAACATGCAGATTTCTT
TTACCCATACTGAGTCAGATATACAGATGGTCCAGGAGAAGCTTTGAAGGCTGTGAAGGAAAAATGGA
AGGTATGGGCGCCGCAAAACAATATCCAATATCCTTGGTTTTAGCCCAACAAGAGAATTGGCTGTACAG
ATCTATGAGGAAGCCAGAAAATTTCTACCGATCTAGAGTTCGTCTTGTAGTATTAGTGGTGGTCT
GATATTGGTCAGCAGATTCGGGACTTAGAACGTGGATGCCACTTGTAGTAGCCACTCCAGGACGCTCA
GTGGATATGATGGAAAGAGGAAAGATTGGATTAGACTTCTGCAAGTACTTAGTGTGGATGAAGCTGAT
AGGATGCTGGATATGGGATTTGAACCTCAGATACGTCGTATAGTTGAACAAGATACTATGCCACCAAG
GGCGTTCGTACACCATGATGTTTAGTGCTACTTTTCTAAGGAAATACAGATGCTTGTCTCGTGACTTT
TTGGATGAATATATCTTTTGGCTGTAGCAGAGTAGGCTCTACCTCTGAGAACATCACACAGAAAGTA
GTTTGGGTGGAAGACTTAGATAAACGGTCATTTCTACTGGACATTTTAGGTGCAACAGGGAGTGATTCA
CTTACTTTAGTGTGTGGAGACCAAAAGGGAGCAGATTCCTGGAGGATTTCTATACCATGAAGGA
TATGCTTGTACTAGTATTCATGGAGACCGGTCACAGAGAGATCGAGAGGAGGCCCTTCACAGTTTCGC
TCAGGAAAAAGCCCAATTCTAGTGGCTACAGCTGTGGCAGCACGAGGACTAGACATTTCAAATGTGAGA
CATGTTATCAATTTTGTGGTCAAGTATTTGAAGAATATGTGCATCGTATTGGCCGTACAGGACGT
GTAGGAAACCTGGGCCTTCCACCTCATTCTTTAATGAAAAAATATGAATATTACAAAGGATTTGTTG
GATCTTCTGTAGAAGCTAAACAAGAAGTGCCTTCTTGGTTGGAAAATATGGCTTATGAACACCACTAC
AAGGGTGGCAGTCGTGGACGATCTAAAAGTAATAGATTCAGTGGAGGATTTGGTCCAGAGACTATCGA
CAAAGTAGTGGTTCCAGCAGTCTTGGCTTGGTGTAGTCGCGGAAGCAGCAGCCGAGTGGTGGAGGT
GGTTACGGCAACAGCAGAGGATTTGGTGGAGGTGGCTATGGAGGCTTCTACAATAGTGATGGATATGGA
GGAAATTATACTCCAGGGGGTTGACTGGTGGGGCAAC
ACGCGTACGCGGCCGCTCGAG - GFP Tag - GTTTAAAC
```

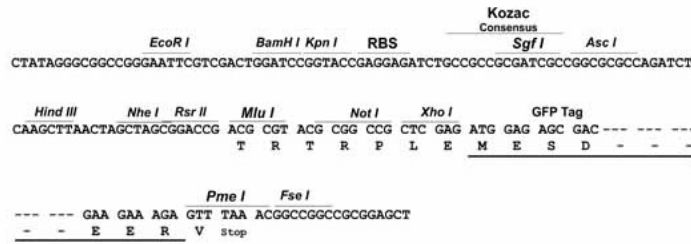
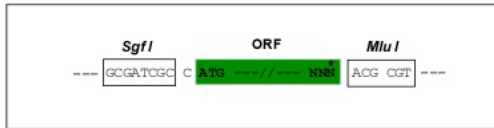
Protein Sequence: >Peptide sequence encoded by RG239232
 Blue=ORF Red=Cloning site Green=Tag(s)

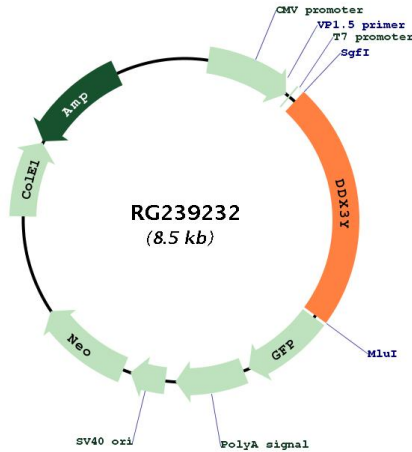
MEIGRPRKDTWKLANLDLNSEKQSGGASTASKGRYIPPHLRNREASKGFHDKDSSGWSCSKDKDAYSSF
 GSRDSRGKPGYF SERGSGSRGRFDDRGRSDYDGI GNRERPGFGRFERSGHSRWCDKSVEDDWSKPLPPS
 ERLEQELFSGGNTGINFEKYDDIPVEATGSNCPPIENFSDIDMGEIIMGNIELTRYTRTPVQKHAIP
 IIKGKRDLMACAQTGSGKTA AFLLPILSQIYTDGPGEALKAVKENGRYGRRKQYPI SLVLAPTRELAVQ
 IYEEARKFSYRSRVRPCVYGGADIGQQIRDLE RGHLLVATPGRLVDMMERGKIGLDFCKYLVLDEAD
 RMLDMGFEPQIRRIVEQDTMPPKGV RHTMMFSATFPKEIQMLARDFLDEYIFLAVGRV GSTSENITQKV
 VWVEDLDKRSFLLDILGATGSDSLTLVFVETKKGADSLDFLYHEGYACTSIHGDRSQRDREALHQFR
 SGKSPILVATAVAARGLDINSVRHVINFDLPSDIEEYVHRIGRTGRVGNLGLATSF FNEKNM NITKDLL
 DLLVEAKQEVPSWLENMAYEHYKGGSRGRSKSNRFSGGFGARDYRQSSGSSSGFGASRGSSSRSGGG
 GYGNSRFGGGGGYGGFYNSDGYGGNYSQGV DWGN
 TRTRPLEMESDESGLPAMEIECRITGTLNGVEFELVGGGEGTPEQGRMTNKMKSTKGALTFSPYLLSHV
 MGYGFYHFGTYP SGYENPFLHAINNGGYTNTRIEKYEDGGVLHVSFSYRYEAGRVIGDFKVMGTGFPE
 SVIFTDKIIRS NATVEHLHPMGDNDLDGSFTRTFLRDGGYSSVVD SHMHFKSAIHP SILQNGGPMFA
 FRRVEEDHSNTELGIVEYQHAFKTPDADAGEERV

Restriction Sites: SgfI-MluI

Cloning Scheme:

Cloning sites used for ORF Shuttling:



Plasmid Map:


ACCN:	NM_001302552
ORF Size:	1971 bp
OTI Disclaimer:	The molecular sequence of this clone aligns with the gene accession number as a point of reference only. However, individual transcript sequences of the same gene can differ through naturally occurring variations (e.g. polymorphisms), each with its own valid existence. This clone is substantially in agreement with the reference, but a complete review of all prevailing variants is recommended prior to use. More info
OTI Annotation:	This clone was engineered to express the complete ORF with an expression tag. Expression varies depending on the nature of the gene.
Components:	The ORF clone is ion-exchange column purified and shipped in a 2D barcoded Matrix tube containing 10ug of transfection-ready, dried plasmid DNA (reconstitute with 100 ul of water).
RefSeq:	NM_001302552.2 , NP_001289481.1
RefSeq Size:	2470 bp
RefSeq ORF:	1974 bp
Locus ID:	8653
UniProt ID:	O15523
Cytogenetics:	Yq11.221
Protein Pathways:	RIG-I-like receptor signaling pathway

MW: 73.4 kDa

Gene Summary: The protein encoded by this gene is a member of the DEAD-box RNA helicase family, characterized by nine conserved motifs, included the conserved Asp-Glu-Ala-Asp (DEAD) motif. These motifs are thought to be involved in ATP binding, hydrolysis, RNA binding, and in the formation of intramolecular interactions. This protein shares high similarity to DDX3X, on the X chromosome, but a deletion of this gene is not complemented by DDX3X. Mutations in this gene result in male infertility, a reduction in germ cell numbers, and can result in Sertoli-cell only syndrome. Pseudogenes sharing similarity to both this gene and the DDX3X paralog are found on chromosome 4 and the X chromosome. Alternative splicing results in multiple transcript variants encoding different isoforms. [provided by RefSeq, Oct 2014]