

Product datasheet for **RG239228**

VPS52 (NM_001289174) Human Tagged ORF Clone

Product data:

Product Type:	Expression Plasmids
Product Name:	VPS52 (NM_001289174) Human Tagged ORF Clone
Tag:	TurboGFP
Symbol:	VPS52
Synonyms:	ARE1; dj1033B10.5; SAC2; SACM2L
Mammalian Cell Selection:	Neomycin
Vector:	pCMV6-AC-GFP (PS100010)
E. coli Selection:	Ampicillin (100 ug/mL)



[View online »](#)

**ORF Nucleotide
Sequence:**

>RG239228 representing NM_001289174.
 Blue=ORF Red=Cloning site Green=Tag(s)

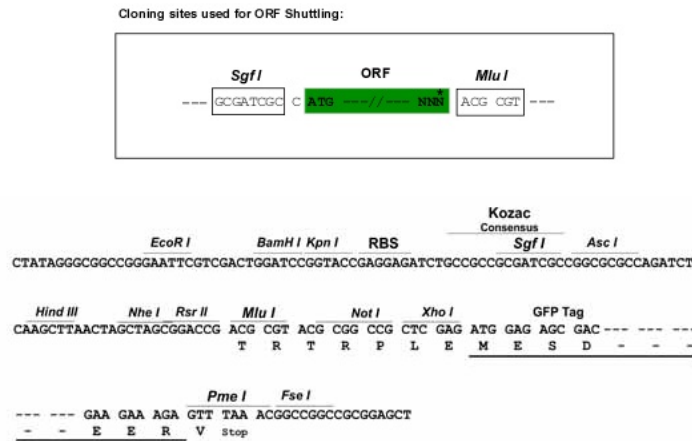
```
GCTCGTTTAGTGAACCGTCAGAATTTTGTAAACGACTCACTATAGGGCGGCCGGGAATTCGTGACTG
GATCCGGTACCGAGGAGATCTGCCGCCCGCATCGCC
ATGAATTCATCCTGGATGAAGTGGATGGGTGTAGATCTCCGTCCTACTATTCAAAGCAAGTTGAGCTGGAG
CTACAGCAGATTGAACAGAAATCCATTCGGGATTATATTCAAGAGAGTGAGAATATAGCATCTCTACAC
AACAGATCACAGCCTGTGATGCTGTCCCTGGAGCGAATGGAGCAGATGTTGGGAGCTTTTCAGAGTGAC
CTCAGCTCCATCAGCTCTGAGATCCGGACACTGCAGGAACAGTCAGGAGCCATGAACATTCGACTTCGA
AATCGCCAGGCAGTTCGGGGGAAACTTGGGGAGCTTGTGATGGTCTGGTGGTGCCTTCTGCTCTGGTC
ACGGCAATTCGGAGGCTCCAGTGACAGAGCCCAGGTTCTTGGAGCAGCTACAGGAGCTGGATGCCAAG
GCAGCCGAGTCAGAGAGCAGGAAGCTAGAGGCACAGCAGCCTGCGCAGATGTCAGAGGCGTGCTCGAT
CGGCTCCGGTCAAGGCAGTGACGAAGATCCGAGAGTTTATCCTCCAGAAGATTTATTCCTTCAGGAAA
CCCATGACCAACTATCAGATCCCCAGACGGCCCTGCTGAAGTACAGGTTCTTCTATCAGTTTCTGCTG
GGCAATGAACGAGCAACAGCAAAGGAGATCAGGGATGAATATGTGGAGACGCTGAGCAAGATTTACCTG
TCTTACTACCGCTTACCTGGGGCGGCTCATGAAGGTGCAGTATGAGGAAGTCGCTGAGAAAGATGAT
CTAATGGGTGTGGAAGATACAGCAAAGAAAGGATTCTTCTCAAAGCCATCGCTCCGACGAGGAACACC
ATTTTCACCTAGGAACCCGCGGCTCTGTATCTCCCCACTGAACTTGAGGCCCCATCCTGGTGCCT
CACACAGCGCAGCGGGAGAGCAGAGGTATCCATTTGAGGCCCTTCCGACGCCAGCACTACGCCCTC
CTAGACAATTCCTGCCGGAATACCTTTTCATCTGTGAATTTTTTGTGTTGTCTGGCCAGCTGCACAC
GACCTGTTCCATGCTGTATGGGCCGTACACTCAGCATGACCCGAAACACCTGGATTCTTATCTAGCT
GACTGCTACGATGCCATTGCTGTTTTCTGTATCCACATTGTTCTCCGGTCCGTAACATTGCAGCA
AAGAGGGATGTTCCCTGGACAGGTACTGGGAACAGGTGCTTGCCTTGCTATGGCCACGGTTTGAA
CTGATCCTGGAGATGAATGTTCCAGAGCGTCCGAAGCACTGACCCCAAGCGCTAGGGGGGTTGGATACT
CGGCCCACTATATCACAGCCGCTATGCAGAGTTCTCCTCCGCTCTTGTGAGTCAACACAGACAATT
CCTAATGAACGGACCATGCAATTGCTGGGACAGCTGCAGGTGGAGGTGGAGAATTTGCTCCTCCGAGTG
GCAGCTGAGTTCTCCTCAAGGAAGGAGCAGCTTGTGTTTCTGATCAACAACATGACATGATGCTGGGT
GTGCTGATGGAGCGGGCTGCAGATGACAGCAAAGAGGTTGAGAGCTTCCAGCAGCTGCTCAATGCTCGG
ACACAGGAATTCATTGAAGAGTTGCTGTCTCCCCCTTTGGGGGTTTGTGGCATTGTGAAGGAGGCT
GAGGCTTTGATTGAGCGTGGACAGGCTGAGCGACTTCGAGGGGAAGAAGCCCGGTAACCTCAGCTGATC
CGTGGCTTTGGTAGTTTCTGAAATCATCAGTGAATCTCTGAGTCAGGATGTAATGCGGAGTTTACC
AACTTCAGAAATGGCACCAGTATCATTACAGGGAGCGCTGACCCAGCTGATCCAGCTCTATCATCGCTTC
CACCGGTGCTGTCCAGCCGAGCTCCGAGCCCTCCCTGCCCGGCTGAGCTCATCAACATTCACCAC
CTTATGGTGGAGCTCAAGAAGCATAAGCCCAACTTC
ACGCGTACGCGGCCGCTCGAG – GFP Tag – GTTTAAAC
```

Protein Sequence: >Peptide sequence encoded by RG239228
 Blue=ORF Red=Cloning site Green=Tag(s)

MNSSWMKWMGVDLRHYSKQVELELQQIEQKSIRDYIQESENIALHNQITACDAVLERMEQMLGAFQSD
 LSSISSEIRTLQEQSGAMNIRLRNRQAVRGKLGELVDGLVVPVSAIVTAILEAPVTEPRFLEQLQELDAK
 AAAREQEARGTAAACADVRGVLDRLRVKAVTKIREFILQKIYSFRKPMNTNYQIPQTALLKYRFFYQFLL
 GNERATAKEIRDEYVETLSKIYLSYYRSYLGRMLMKVQYEEVAEKDDLGMVEDTAKKGFVSKPSLRSRNT
 IFTLGTRGSVISPTLEAPILVPHTAQRGEQRYPFALFRSQHYALLDNSCREYLFICEFFVVSQPAAH
 DLFHAVMGRTLSMTLKHLDQYLADCYDAIAVFLCIHIVLRFNRNIAAKRDVPALDRYWEQVLALLWPRFE
 LILEMNVQSVRSTDPQRLGGLDTRPHYITRRYAEFSSALVSINQTI PNERTMQLLQQLQVEVENFVLRV
 AAEFSSRKEQLVFLINNYDMMLGVL MERAADDSKEVESFQQLLNARTQEFIEELLSPFGLVAFVKEA
 EALIERGQAEERLGEARVTVLIRGFGSSWKSSVESLSQDVMRSFTNFRNGTSIIQGALTQLIQLYHRF
 HRVLSQPQLRALPARAELINIHMLMVELKHKPNF
 TRTRPLEMESDESGLPAMEIECRITGTLNGVEFELVGGEGTPEQGRMTNKMSTKGALTFSPYLLSHV
 MGYGFYHFGTYPSTYENPFLHAINNGGYNTRIEKYEDGGVLHVSFSYRYEAGRVIGDFKVMGTGFPED
 SVIFTDKIIRSNAIVEHLHPMGDNDLDGSFTRTFLRDGGYSSVVD SHMHFKSAIHP SILQNGGPMFA
 FRRVEEDHSNTELGIVEYQHAFKTPDADAGEERV

Restriction Sites: SgfI-MluI

Cloning Scheme:



ACCN: NM_001289174

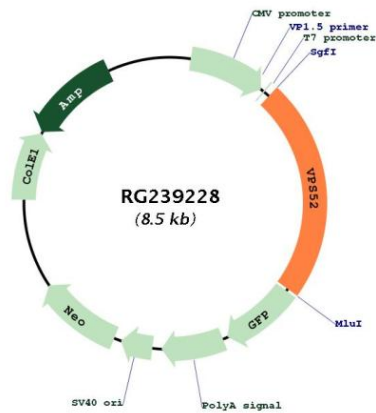
ORF Size: 1968 bp

OTI Disclaimer: The molecular sequence of this clone aligns with the gene accession number as a point of reference only. However, individual transcript sequences of the same gene can differ through naturally occurring variations (e.g. polymorphisms), each with its own valid existence. This clone is substantially in agreement with the reference, but a complete review of all prevailing variants is recommended prior to use. [More info](#)

OTI Annotation: This clone was engineered to express the complete ORF with an expression tag. Expression varies depending on the nature of the gene.

Components:	The ORF clone is ion-exchange column purified and shipped in a 2D barcoded Matrix tube containing 10ug of transfection-ready, dried plasmid DNA (reconstitute with 100 ul of water).
RefSeq:	<u>NM_001289174.2</u>
RefSeq Size:	3442 bp
RefSeq ORF:	1971 bp
Locus ID:	6293
Cytogenetics:	6p21.32
MW:	75.8 kDa
Gene Summary:	This gene encodes a protein that is similar to the yeast suppressor of actin mutations 2 gene. The yeast protein forms a subunit of the tetrameric Golgi-associated retrograde protein complex that is involved in vesicle trafficking from from both early and late endosomes, back to the trans-Golgi network. This gene is located on chromosome 6 in a head-to-head orientation with the gene encoding ribosomal protein S18. Alternative splicing results in multiple transcript variants. [provided by RefSeq, Jan 2014]

Product images:



Circular map for RG239228